



## Medium Chess Puzzle # 0085

By

G Bud Games  
<https://gbud.in>

December 8, 2021

## Contents

<b>Medium Chess puzzle # 0085 - Mate in 2 moves</b>	<b>4</b>
Medium chess puzzle 0085 . . . . .	4
Solution to medium chess puzzle 0085 . . . . .	5
Solution 1 . . . . .	5
Right moves for the solution to the medium chess puzzle 0085	7
Explanation for the moves . . . . .	7
Categories of medium chess puzzle 0085 . . . . .	8
medium chess puzzle 0085 chart . . . . .	9
How to view the solution to medium chess puzzle 0085 . . . . .	11
How to get help for moves in the medium chess puzzle 0085 . . . . .	12
Play chess for free . . . . .	13

## List of Figures

1	<a href="https://gbud.in/gdy05f2">Solve this medium chess puzzle 0085. Mate in 2 moves @ https://gbud.in/gdy05f2</a> . . . . .	4
2	<a href="https://gbud.in/gdy05f2">Solve this medium chess puzzle online with solution @ https://gbud.in/gdy05f2</a> . . . . .	4
3	Initial board position of medium chess puzzle 0085 . . . . .	5
4	<a href="#">Qxh7+ - Your queen sacrifices itself to attract the opponent's queen to h7.</a> . . . . .	6
5	<a href="#">Qxh7 - Opponent's queen captures your queen. This is a zugzwang move as this forces opponent's queen to respond and this is the only legal move available.</a> . . . . .	6
6	<a href="#">Bxh7# - Your bishop from the battery formation captures opponent's queen and checkmate. King has no free squares to move as it is blocked by rook. Opponent's king can't capture your bishop since it is supported by knight. This is called Blackburne's mate.. This is how you can mate in 2 moves.</a> . . . . .	7
7	<a href="#">medium chess puzzle 85 chart 1</a> . . . . .	9
8	<a href="#">medium chess puzzle 85 chart 2</a> . . . . .	10
9	<a href="#">medium chess puzzle 85 chart 3</a> . . . . .	10
10	<a href="#">medium chess puzzle 85 chart 4</a> . . . . .	11
11	<a href="https://gbud.in/gdy05f2">Click the solution button to view solutions @ https://gbud.in/gdy05f2</a> . . . . .	11
12	<a href="https://gbud.in/gdy05f2">Click the help button to get help on next move @ https://gbud.in/gdy05f2</a> . . . . .	12

13	Solve more medium puzzles @ <a href="https://gbud.in/chsmdpz">https://gbud.in/chsmdpz</a> .	12
14	Solve other puzzles @ <a href="https://gbud.in/chsgppz">https://gbud.in/chsgppz</a> . . . . .	12
15	Play chess online for free. Solve puzzles and play with friends	13
16	Solve this puzzle online by scanning this QR code or go to the link below . . . . .	14

## Medium Chess puzzle # 0085 - Mate in 2 moves

Solve this medium chess puzzle and improve your chess games through improvement of your chess strategies and chess tactics.

Puzzle No : 0085

Difficulty level : medium

Description : Mate in 2 moves

Next Move : White

Player level : Intermediate

Short URL for puzzle : <https://gbud.in/gdy05f2>

### Medium chess puzzle 0085

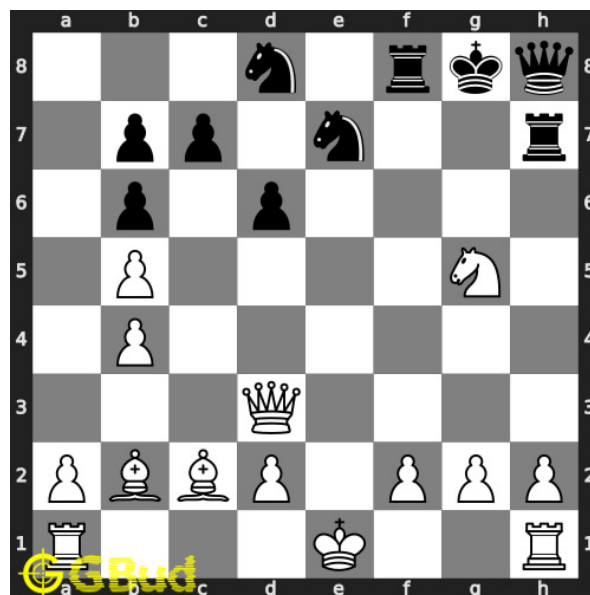


Figure 1: Solve this medium chess puzzle 0085. Mate in 2 moves @ <https://gbud.in/gdy05f2>



Figure 2: Solve this medium chess puzzle online with solution @ <https://gbud.in/gdy05f2>

Dont forget to check out [chess puzzles](#), [easy chess puzzles](#), [medium chess puzzles](#), [hard chess puzzles](#) and [chess puzzles collections](#) .

## Solution to medium chess puzzle 0085

At this puzzle, next [move](#) is by [White](#). The objective of the puzzle is to mate in 2 moves.

See the interactive solution at the [puzzle page](#)

### Solution 1

**Initial board position** This is the initial board position of medium chess puzzle 0085.

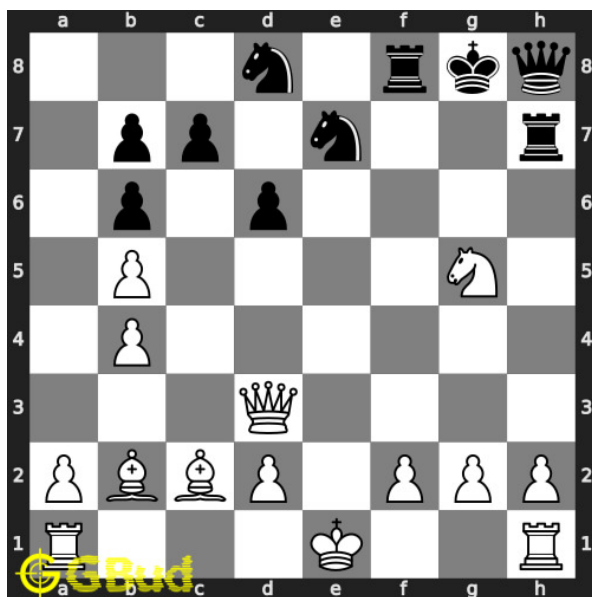


Figure 3: Initial board position of medium chess puzzle 0085

**Move 1** Move by white

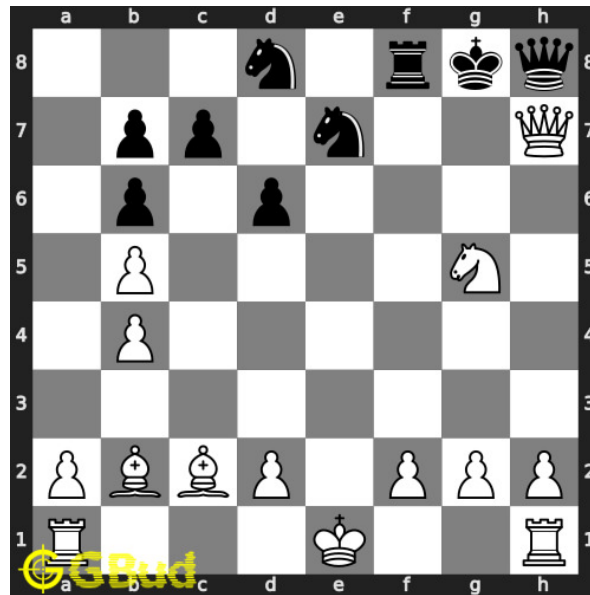


Figure 4: Qxh7+ - Your queen sacrifices itself to attract the opponent's queen to h7.

**Move 2** Move by black

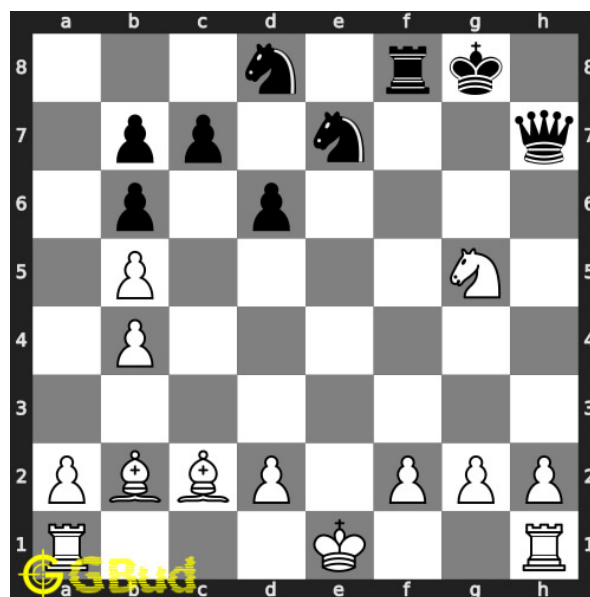


Figure 5: Qxh7 - Opponent's queen captures your queen. This is a zugzwang move as this forces opponent's queen to respond and this is the only legal move available.

**Move 3** Move by white

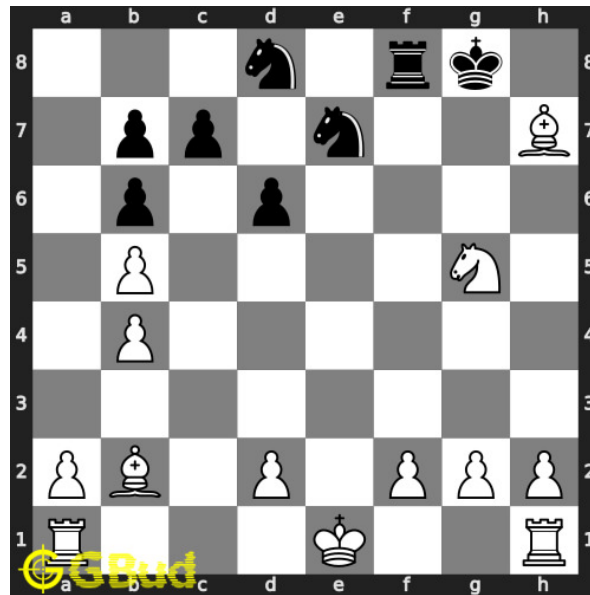


Figure 6: Bxh7# - Your bishop from the battery formation captures opponent's queen and checkmate. King has no free squares to move as it is blocked by rook. Opponent's king can't capture your bishop since it is supported by knight. This is called Blackburne's mate.. This is how you can mate in 2 moves.

### Right moves for the solution to the medium chess puzzle 0085

Based on the objective of the puzzle, you have to make the right moves. Following are the right moves

1. Qxh7+, Bxh7#

### Explanation for the moves

1. Qxh7+ - Your queen sacrifices itself to attract the opponent's queen to h7.
2. Qxh7 - Opponent's queen captures your queen. This is a zugzwang move as this forces opponent's queen to respond and this is the only legal move available.
3. Bxh7# - Your bishop from the battery formation captures opponent's queen and checkmate. King has no free squares to move as it is blocked by rook. Opponent's king can't capture your bishop since it is supported by knight. This is called Blackburne's mate.. This is how you can mate in 2 moves.
4. For right move - You utilised the power of the battery formation. This helped you have a checkmate in 2 moves

5. For wrong move - You could have sacrificed your queen for mate in 2 moves. You missed it

## Categories of medium chess puzzle 0085

This medium chess puzzle falls in these categories.

1. [Medium chess puzzles](#)
2. [Sacrifice puzzles in chess](#)
3. [Mate in 2 puzzles in chess](#)
4. [Endgame puzzles in chess](#)
5. [Battery puzzles in chess](#)
6. [Strategy puzzles in chess](#)
7. [Mate pattern puzzles in chess](#)
8. [Zugzwang puzzles in chess](#)
9. [Queen puzzles in chess](#)
10. [Bishop puzzles in chess](#)



## medium chess puzzle 0085 chart



Figure 7: medium chess puzzle 85 chart 1



Figure 8: medium chess puzzle 85 chart 2



Figure 9: medium chess puzzle 85 chart 3

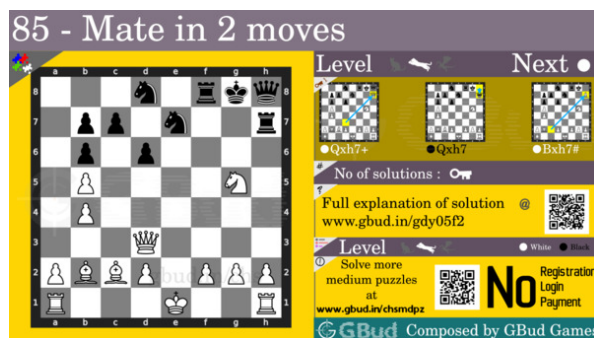


Figure 10: medium chess puzzle 85 chart 4

## How to view the solution to medium chess puzzle 0085

To view the [solution to this puzzle](#), follow the steps given below

1. Go to the [puzzle page](#)
2. Click the solution button (Key as shown [below](#)) to view the solution



Figure 11: Click the solution button to view solutions @ <https://gbud.in/gdy05f2>

## How to get help for moves in the medium chess puzzle 0085

To get help or the possible next moves in the puzzle, , follow the steps given below

1. Go to the [puzzle page](#)
2. Click the help button (exclamation mark as shown [below](#)) to get help or suggestion on next possible [move](#)



Figure 12: Click the help button to get help on next move @ <https://gbud.in/gdy05f2>



Figure 13: Solve more medium puzzles @ <https://gbud.in/chsmdpz>



Figure 14: Solve other puzzles @ <https://gbud.in/chsgppz>

## Play chess for free

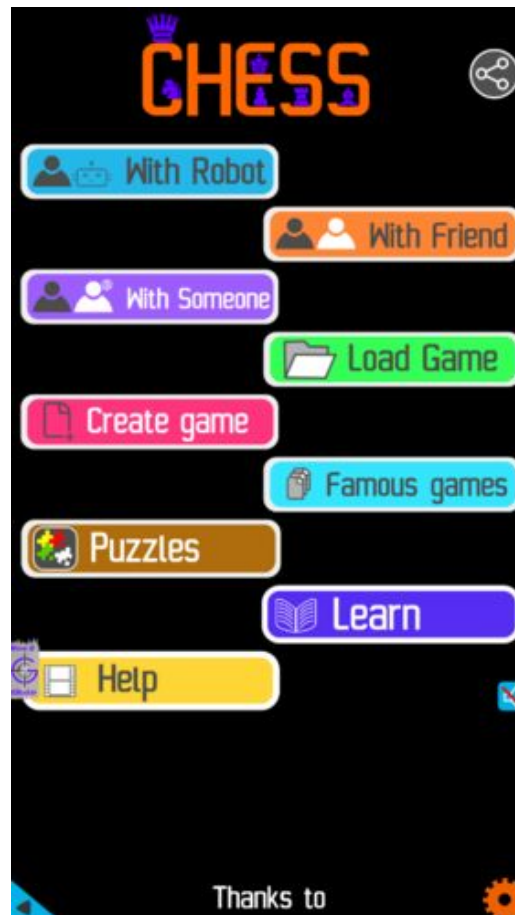


Figure 15: Play chess online for free. Solve puzzles and play with friends

Play chess for free at <https://gbud.in/chs>

We present you a platform to play chess online with friends for free. No need to install any app. You can play chess for free without registration or login.

Simple. You can do several chess related activities.

1. [solve chess puzzles](#)
2. [learn about chess](#)
3. [play chess with computer](#)
4. [play chess with friend](#)
5. [create your own chess games](#)

6. [fen viewer](#)
7. [fen editor](#)
8. [fen generator](#)
9. [pgn viewer](#)
10. [chess board editor](#)
11. [view famous chess games.](#)



Figure 16: Solve this puzzle online by scanning this QR code or go to the link below

<https://gbud.in/gdy05f2>

Read the latest article on Medium Chess puzzle # 0085 - Mate in 2 moves by scanning this QR code or click the link

Previous article : « [Medium Chess puzzle # 0084 - Mate in 2 moves](#)

Next article : [Medium Chess puzzle # 0086 - Get a queen in two moves](#) »

[Back to top](#)

[Contact Us](#)