



Medium Chess Puzzle # 0084

By

G Bud Games
<https://gbud.in>

December 7, 2021

Contents

Medium Chess puzzle # 0084 - Mate in 2 moves	3
Medium chess puzzle 0084	3
Solution to medium chess puzzle 0084	4
Solution 1	4
Right moves for the solution to the medium chess puzzle 0084	6
Explanation for the moves	6
Categories of medium chess puzzle 0084	6
medium chess puzzle 0084 chart	7
How to view the solution to medium chess puzzle 0084	9
How to get help for moves in the medium chess puzzle 0084	10
Play chess for free	11

List of Figures

1	Solve this medium chess puzzle 0084. Mate in 2 moves @ https://gbud.in/g3rpr42	3
2	Solve this medium chess puzzle online with solution @ https://gbud.in/g3rpr42	3
3	Initial board position of medium chess puzzle 0084	4
4	Nf5 - Your knight moves to f5 and targets g7.	5
5	Kh7 - King moves since all other pieces are blocked	5
6	Qxg7# - Your queen captures opponents pawn and check-mate. Opponent's king can't capture your queen since it is supported by knight. This is how you can mate in 2 moves.	6
7	medium chess puzzle 84 chart 1	7
8	medium chess puzzle 84 chart 2	8
9	medium chess puzzle 84 chart 3	8
10	medium chess puzzle 84 chart 4	9
11	Click the solution button to view solutions @ https://gbud.in/g3rpr42	9
12	Click the help button to get help on next move @ https://gbud.in/g3rpr42	10
13	Solve more medium puzzles @ https://gbud.in/chsmdpz	10
14	Solve other puzzles @ https://gbud.in/chsgppz	10
15	Play chess online for free. Solve puzzles and play with friends	11
16	Solve this puzzle online by scanning this QR code or go to the link below	12

Medium Chess puzzle # 0084 - Mate in 2 moves

Solve this medium chess puzzle and improve your chess games through improvement of your chess strategies and chess tactics.

Puzzle No : 0084

Difficulty level : medium

Description : Mate in 2 moves

Next Move : White

Player level : Intermediate

Short URL for puzzle : <https://gbud.in/g3rpr42>

Medium chess puzzle 0084

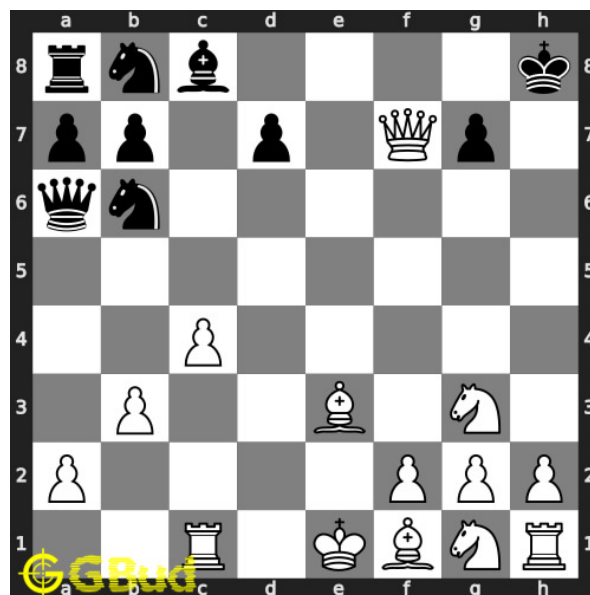


Figure 1: Solve this medium chess puzzle 0084. Mate in 2 moves @ <https://gbud.in/g3rpr42>



Figure 2: Solve this medium chess puzzle online with solution @ <https://gbud.in/g3rpr42>

Dont forget to check out [chess puzzles](#), [easy chess puzzles](#), [medium chess puzzles](#), [hard chess puzzles](#) and [chess puzzles collections](#) .

Solution to medium chess puzzle 0084

At this puzzle, next [move](#) is by [White](#). The objective of the puzzle is to mate in 2 moves.

See the interactive solution at the [puzzle page](#)

Solution 1

Initial board position This is the initial board position of medium chess puzzle 0084.

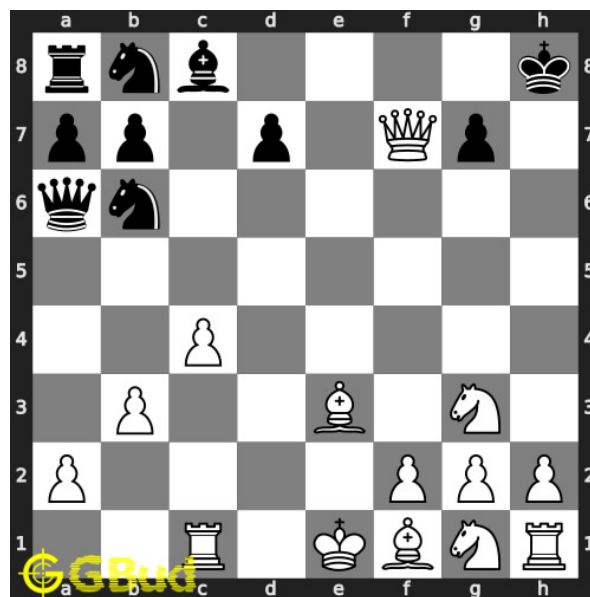


Figure 3: Initial board position of medium chess puzzle 0084

Move 1 Move by white

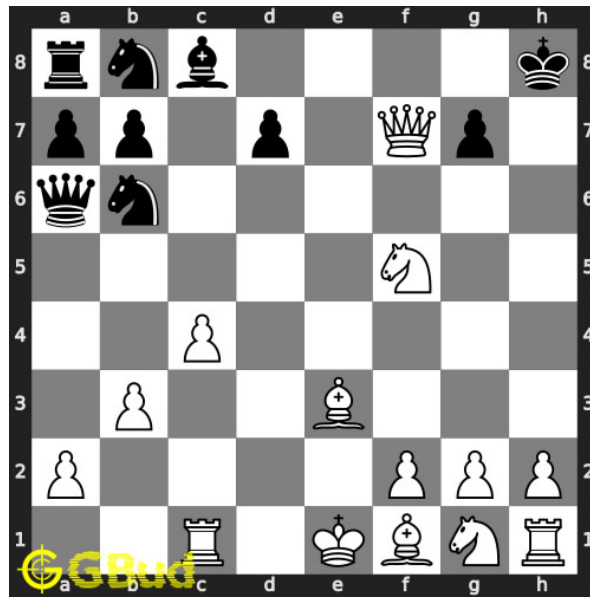


Figure 4: Nf5 - Your knight moves to f5 and targets g7.

Move 2 Move by black

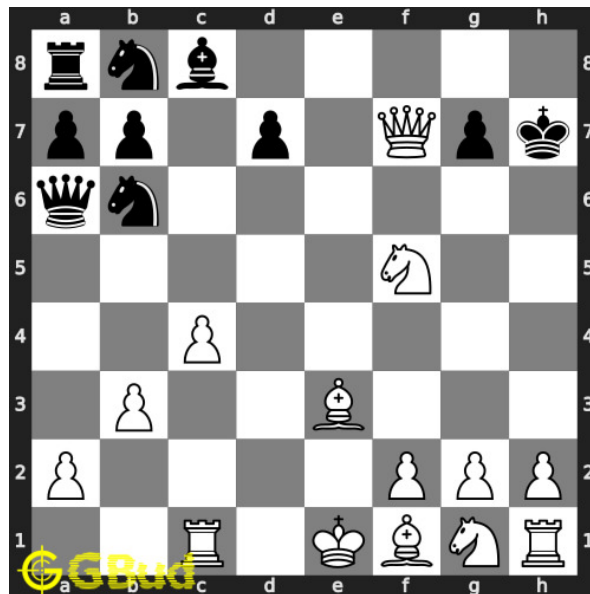


Figure 5: Kh7 - King moves since all other pieces are blocked

Move 3 Move by white

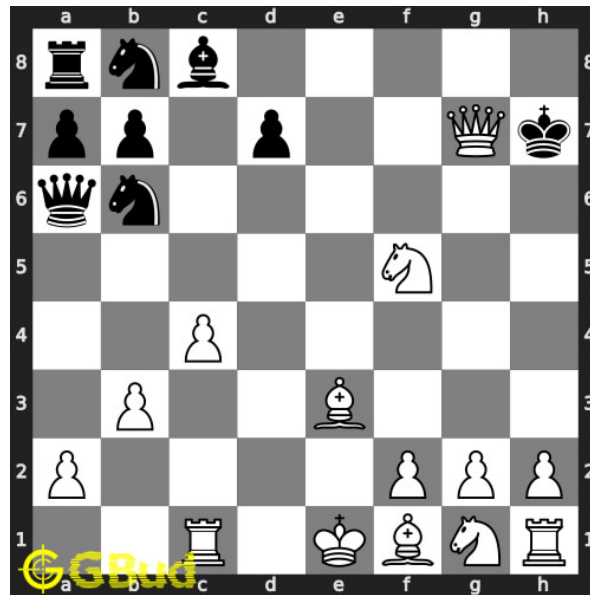


Figure 6: Qxg7# - Your queen captures opponents pawn and checkmate. Opponent's king can't capture your queen since it is supported by knight. This is how you can mate in 2 moves.

Right moves for the solution to the medium chess puzzle 0084

Based on the objective of the puzzle, you have to make the right moves. Following are the right moves

1. Nf5, Qxg7#

Explanation for the moves

1. Nf5 - Your knight moves to f5 and targets g7.
2. Kh7 - King moves since all other pieces are blocked
3. Qxg7# - Your queen captures opponents pawn and checkmate. Opponent's king can't capture your queen since it is supported by knight. This is how you can mate in 2 moves.
4. For right move - You used your knight and queen effectively to win the game. Good strategy
5. For wrong move - You could have used your queen and knight to have a checkmate in two moves. Try again

Categories of medium chess puzzle 0084

This medium chess puzzle falls in these categories.

1. [Medium chess puzzles](#)
2. [Mate in 2 puzzles in chess](#)
3. [Endgame puzzles in chess](#)
4. [Strategy puzzles in chess](#)
5. [Queen puzzles in chess](#)
6. [Knight puzzles in chess](#)

medium chess puzzle 0084 chart



Figure 7: medium chess puzzle 84 chart 1



Figure 8: medium chess puzzle 84 chart 2



Figure 9: medium chess puzzle 84 chart 3

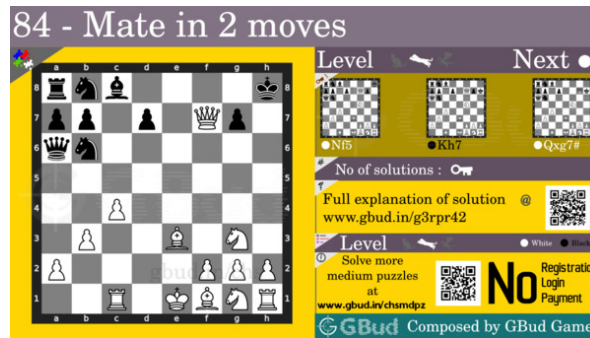


Figure 10: medium chess puzzle 84 chart 4

How to view the solution to medium chess puzzle 0084

To view the [solution to this puzzle](#), follow the steps given below

1. Go to the [puzzle page](#)
2. Click the solution button (Key as shown [below](#)) to view the solution



Figure 11: Click the solution button to view solutions @ <https://gbud.in/g3rpr42>

How to get help for moves in the medium chess puzzle 0084

To get help or the possible next moves in the puzzle, , follow the steps given below

1. Go to the [puzzle page](#)
2. Click the help button (exclamation mark as shown [below](#)) to get help or suggestion on next possible [move](#)



Figure 12: Click the help button to get help on next move @ <https://gbud.in/g3rpr42>



Figure 13: Solve more medium puzzles @ <https://gbud.in/chsmdpz>



Figure 14: Solve other puzzles @ <https://gbud.in/chsgppz>

Play chess for free

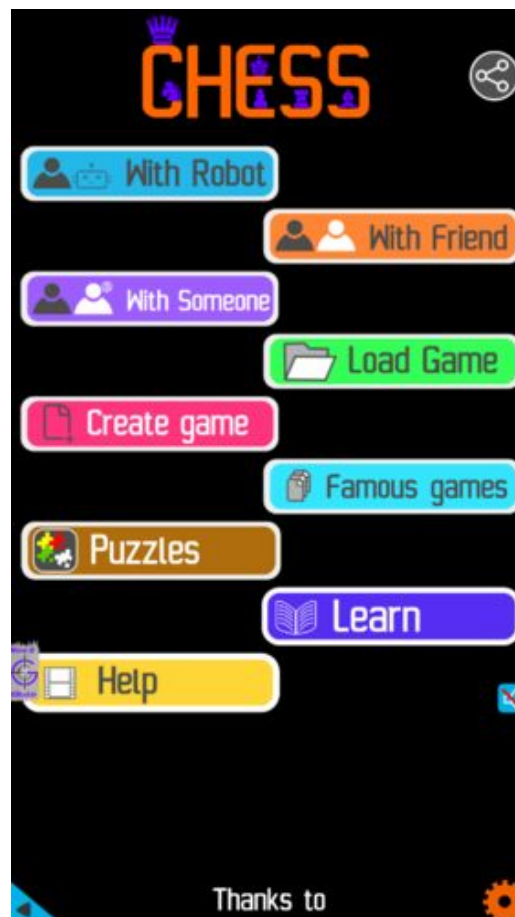


Figure 15: Play chess online for free. Solve puzzles and play with friends

Play chess for free at <https://gbud.in/chs>

We present you a platform to play chess online with friends for free. No need to install any app. You can play chess for free without registration or login.

Simple. You can do several chess related activities.

1. [solve chess puzzles](#)
2. [learn about chess](#)
3. [play chess with computer](#)
4. [play chess with friend](#)
5. [create your own chess games](#)

6. [fen viewer](#)
7. [fen editor](#)
8. [fen generator](#)
9. [pgn viewer](#)
10. [chess board editor](#)
11. [view famous chess games.](#)



Figure 16: Solve this puzzle online by scanning this QR code or go to the link below

<https://gbud.in/g3rpr42>

Read the latest article on Medium Chess puzzle # 0084 - Mate in 2 moves by scanning this QR code or click the link

Previous article : [« Medium Chess puzzle # 0083 - Mate in 2 moves](#)

Next article : [Medium chess puzzles »](#)

[Back to top](#)

[Contact Us](#)