



## Medium Chess Puzzle # 0081

By

G Bud Games  
<https://gbud.in>

November 24, 2021

## Contents

<b>Medium Chess puzzle # 0081 - Mate in 2 moves</b>	<b>3</b>
Medium chess puzzle 0081 . . . . .	3
Solution to medium chess puzzle 0081 . . . . .	4
Solution 1 . . . . .	4
Right moves for the solution to the medium chess puzzle 0081	6
Explanation for the moves . . . . .	6
Categories of medium chess puzzle 0081 . . . . .	7
medium chess puzzle 0081 chart . . . . .	7
How to view the solution to medium chess puzzle 0081 . . . . .	8
How to get help for moves in the medium chess puzzle 0081 . . . . .	9
Play chess for free . . . . .	10

## List of Figures

1	<a href="https://gbud.in/gpt4w52">Solve this medium chess puzzle 0081. Mate in 2 moves @ https://gbud.in/gpt4w52</a> . . . . .	3
2	<a href="https://gbud.in/gpt4w52">Solve this medium chess puzzle online with solution @ https://gbud.in/gpt4w52</a> . . . . .	3
3	Initial board position of medium chess puzzle 0081 . . . . .	4
4	Rh2+ - Your rook moves to h2 and gives the check . . . . .	5
5	Kg1 - King moves to g1 as this is the only free square available. Opponent's king can not capture your rook since it is supported by the knight . . . . .	5
6	Kd2# - Your king moves for a discovered attack. The movement opens the attack from the rook and leads to checkmate. Opponent's king has no free squares to move. This is how you can mate in 2 moves . . . . .	6
7	medium chess puzzle 81 chart 1 . . . . .	7
8	medium chess puzzle 81 chart 2 . . . . .	8
9	Click the solution button to view solutions @ <a href="https://gbud.in/gpt4w52">https://gbud.in/gpt4w52</a> . . . . .	8
10	Click the help button to get help on next move @ <a href="https://gbud.in/gpt4w52">https://gbud.in/gpt4w52</a> . . . . .	9
11	Solve more medium puzzles @ <a href="https://gbud.in/chsmdpz">https://gbud.in/chsmdpz</a> . . . . .	9
12	Solve other puzzles @ <a href="https://gbud.in/chsgppz">https://gbud.in/chsgppz</a> . . . . .	9
13	Play chess online for free. Solve puzzles and play with friends	10
14	Solve this puzzle online by scanning this QR code or go to the link below . . . . .	11

## Medium Chess puzzle # 0081 - Mate in 2 moves

Solve this medium chess puzzle and improve your chess games through improvement of your chess strategies and chess tactics.

Puzzle No : 0081

Difficulty level : medium

Description : Mate in 2 moves

Next Move : White

Player level : Intermediate

Short URL for puzzle : <https://gbud.in/gpt4w52>

### Medium chess puzzle 0081

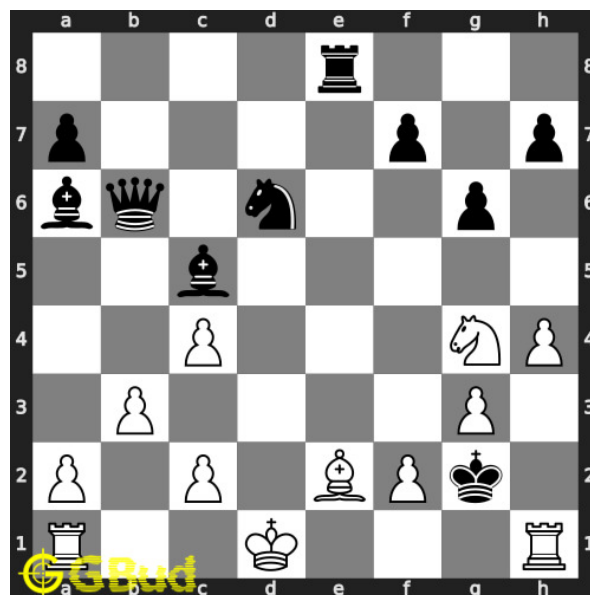


Figure 1: Solve this medium chess puzzle 0081. Mate in 2 moves @ <https://gbud.in/gpt4w52>



Figure 2: Solve this medium chess puzzle online with solution @ <https://gbud.in/gpt4w52>

## Solution to medium chess puzzle 0081

At this puzzle, next **move** is by **White**. The objective of the puzzle is to mate in 2 moves.

See the interactive solution at the [puzzle page](#)

### Solution 1

**Initial board position** This is the initial board position of medium chess puzzle 0081.

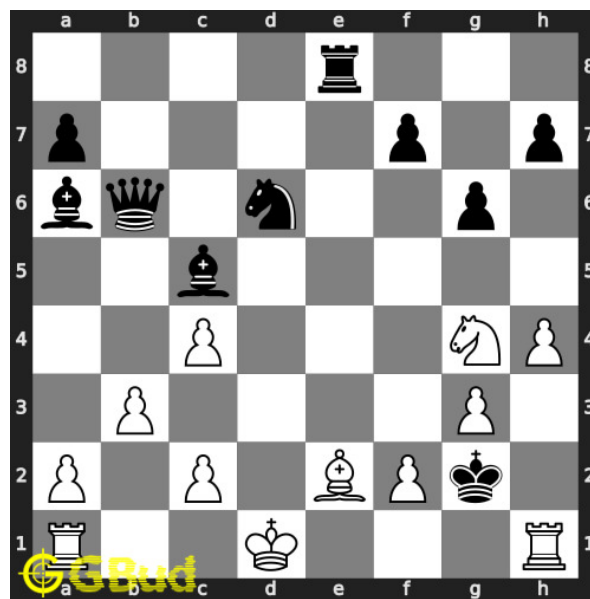


Figure 3: Initial board position of medium chess puzzle 0081

**Move 1** Move by white

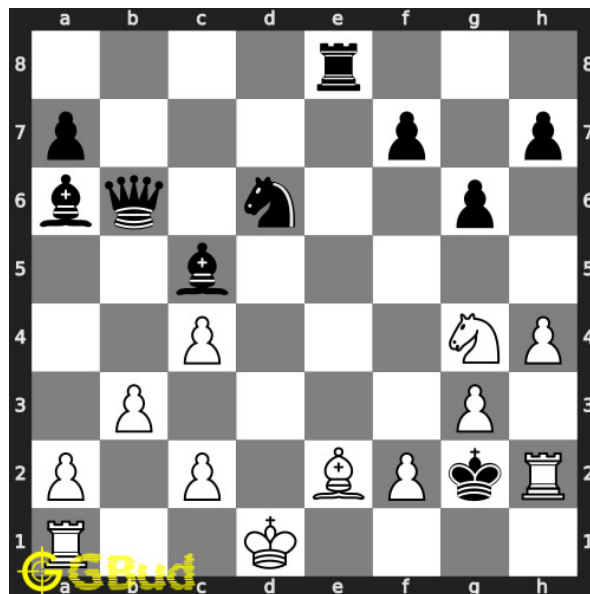


Figure 4: Rh2+ - Your rook moves to h2 and gives the check

**Move 2** Move by black

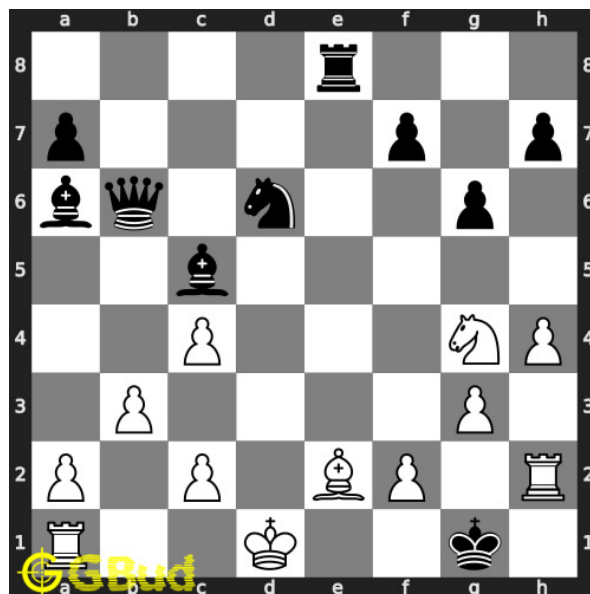


Figure 5: Kg1 - King moves to g1 as this is the only free square available. Opponent's king can not capture your rook since it is supported by the knight

**Move 3** Move by white

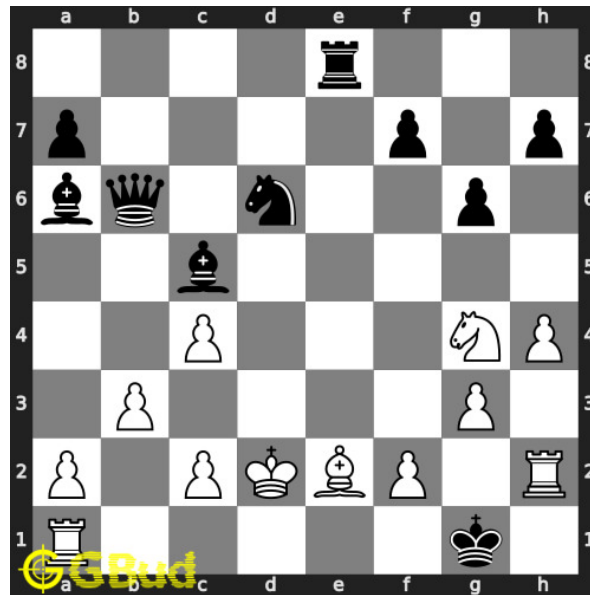


Figure 6: Kd2# - Your king moves for a discovered attack. The movement opens the attack from the rook and leads to checkmate. Opponent's king has no free squares to move. This is how you can mate in 2 moves

### Right moves for the solution to the medium chess puzzle 0081

Based on the objective of the puzzle, you have to make the right moves. Following are the right moves

1. Rh2+, Kd2#

### Explanation for the moves

1. Rh2+ - Your rook moves to h2 and gives the check
2. Kg1 - King moves to g1 as this is the only free square available. Opponent's king can not capture your rook since it is supported by the knight
3. Kd2# - Your king moves for a discovered attack. The movement opens the attack from the rook and leads to checkmate. Opponent's king has no free squares to move. This is how you can mate in 2 moves
4. For right move - You have had a mate using the rooks. Your moves were awesome
5. For wrong move - You could have had a mate by a discovered attack. Can you try again.

## Categories of medium chess puzzle 0081

This medium chess puzzle falls in these categories.

1. [Medium chess puzzles](#)
2. [Mate in 2 puzzles in chess](#)
3. [Endgame puzzles in chess](#)
4. [Strategy puzzles in chess](#)
5. [Rook puzzles in chess](#)

### medium chess puzzle 0081 chart



Figure 7: medium chess puzzle 81 chart 1



Figure 8: medium chess puzzle 81 chart 2

## How to view the solution to medium chess puzzle 0081

To view the [solution to this puzzle](https://gbud.in/gpt4w52), follow the steps given below

1. Go to the [puzzle page](https://gbud.in/gpt4w52)
2. Click the solution button (Key as shown [below](https://gbud.in/gpt4w52)) to view the solution



Figure 9: Click the solution button to view solutions @ <https://gbud.in/gpt4w52>



## How to get help for moves in the medium chess puzzle 0081

To get help or the possible next moves in the puzzle, , follow the steps given below

1. Go to the [puzzle page](#)
2. Click the help button (exclamation mark as shown [below](#)) to get help or suggestion on next possible [move](#)



Figure 10: Click the help button to get help on next move @ <https://gbud.in/gpt4w52>



Figure 11: Solve more medium puzzles @ <https://gbud.in/chsmdpz>



Figure 12: Solve other puzzles @ <https://gbud.in/chsgppz>

## Play chess for free

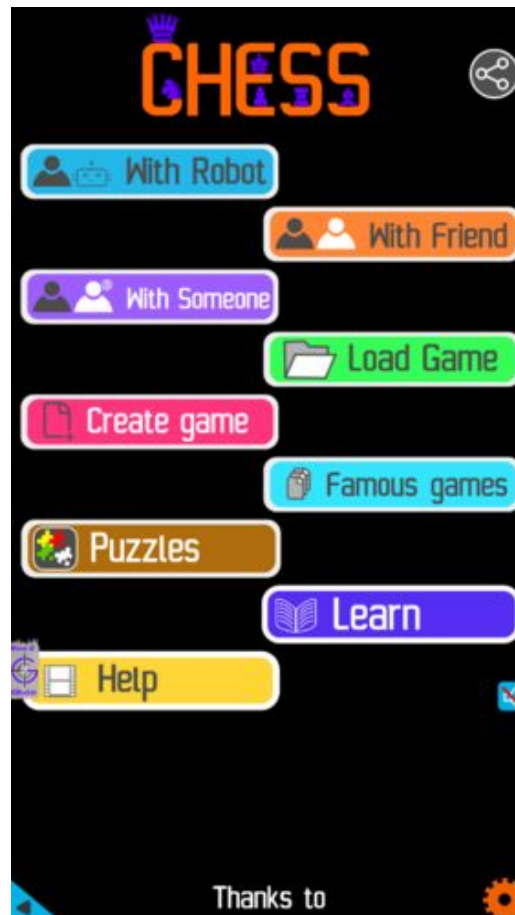


Figure 13: Play chess online for free. Solve puzzles and play with friends

Play chess for free at <https://gbud.in/chs>

We present you a platform to play chess online with friends for free. No need to install any app. You can play chess for free without registration or login.

Simple. You can do several chess related activities.

1. [solve chess puzzles](#)
2. [learn about chess](#)
3. [play chess with computer](#)
4. [play chess with friend](#)
5. [create your own chess games](#)

6. [fen viewer](#)
7. [fen editor](#)
8. [fen generator](#)
9. [pgn viewer](#)
10. [chess board editor](#)
11. [view famous chess games.](#)



Figure 14: Solve this puzzle online by scanning this QR code or go to the link below

<https://gbud.in/gpt4w52>

Read the latest article on Medium Chess puzzle # 0081 - Mate in 2 moves by scanning this QR code or click the link

Previous article : [« Medium Chess puzzle # 0080 - Mate in 2 moves](#)

Next article : [Medium chess puzzles »](#)

[Back to top](#)

[Contact Us](#)