



## Medium Chess Puzzle # 0080

By

G Bud Games  
<https://gbud.in>

November 23, 2021

## Contents

<b>Medium Chess puzzle # 0080 - Mate in 2 moves</b>	<b>4</b>
Medium chess puzzle 0080 . . . . .	4
Solution to medium chess puzzle 0080 . . . . .	5
Solution 1 . . . . .	5
Solution 2 . . . . .	7
Right moves for the solution to the medium chess puzzle 0080	9
Explanation for the moves . . . . .	9
Categories of medium chess puzzle 0080 . . . . .	10
medium chess puzzle 0080 chart . . . . .	10
How to view the solution to medium chess puzzle 0080 . . . . .	11
How to get help for moves in the medium chess puzzle 0080 . . . . .	12
Play chess for free . . . . .	13

## List of Figures

1	<a href="https://gbud.in/gb8dpk2">Solve this medium chess puzzle 0080. Mate in 2 moves @ https://gbud.in/gb8dpk2</a> . . . . .	4
2	<a href="https://gbud.in/gb8dpk2">Solve this medium chess puzzle online with solution @ https://gbud.in/gb8dpk2</a> . . . . .	4
3	<a href="#">Initial board position of medium chess puzzle 0080</a> . . . . .	5
4	<a href="#">Bg5+ - Your bishop gives a check to the king.</a> . . . . .	6
5	<a href="#">Kh3 - Opponent's king moves to h3 to escape from the check threat. He can not capture your bishop since it is protected by the pawn</a> . . . . .	6
6	<a href="#">Nf4# - Your knight moves in and checkmate. Opponent's king has no free squares to move as it is blocked by friendly pieces. This is how you can mate in 2 moves</a> . . . . .	7
7	<a href="#">Initial board position of medium chess puzzle 0080</a> . . . . .	7
8	<a href="#">Bg5+ - Your bishop gives a check to the king.</a> . . . . .	8
9	<a href="#">Kh5 - Opponent's king moves to h5 to escape from the check threat. He can not capture your bishop since it is protected by the pawn</a> . . . . .	8
10	<a href="#">Nf4# - Your knight moves in and checkmate. Opponent's king has no free squares to move as it is blocked by friendly pieces. This is how you can mate in 2 moves</a> . . . . .	9
11	<a href="#">medium chess puzzle 80 chart 1</a> . . . . .	10
12	<a href="#">medium chess puzzle 80 chart 2</a> . . . . .	11

13	Click the solution button to view solutions @ <a href="https://gbud.in/gb8dpk2">https://gbud.in/gb8dpk2</a> . . . . .	11
14	Click the help button to get help on next move @ <a href="https://gbud.in/gb8dpk2">https://gbud.in/gb8dpk2</a> . . . . .	12
15	Solve more medium puzzles @ <a href="https://gbud.in/chsmdpz">https://gbud.in/chsmdpz</a> . . . . .	12
16	Solve other puzzles @ <a href="https://gbud.in/chsgppz">https://gbud.in/chsgppz</a> . . . . .	12
17	Play chess online for free. Solve puzzles and play with friends	13
18	Solve this puzzle online by scanning this QR code or go to the link below . . . . .	14

## Medium Chess puzzle # 0080 - Mate in 2 moves

Solve this medium chess puzzle and improve your chess games through improvement of your chess strategies and chess tactics.

Puzzle No : 0080

Difficulty level : medium

Description : Mate in 2 moves

Next Move : Black

Player level : Intermediate

Short URL for puzzle : <https://gbud.in/gb8dpk2>

### Medium chess puzzle 0080

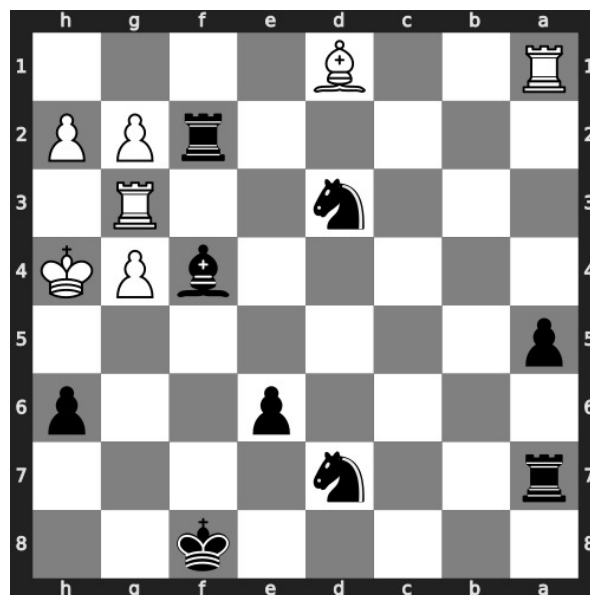


Figure 1: Solve this medium chess puzzle 0080. Mate in 2 moves @ <https://gbud.in/gb8dpk2>



Figure 2: Solve this medium chess puzzle online with solution @ <https://gbud.in/gb8dpk2>

## Solution to medium chess puzzle 0080

At this puzzle, next [move](#) is by [Black](#). The objective of the puzzle is to mate in 2 moves.

See the interactive solution at the [puzzle page](#)

### Solution 1

**Initial board position** This is the initial board position of medium chess puzzle 0080.

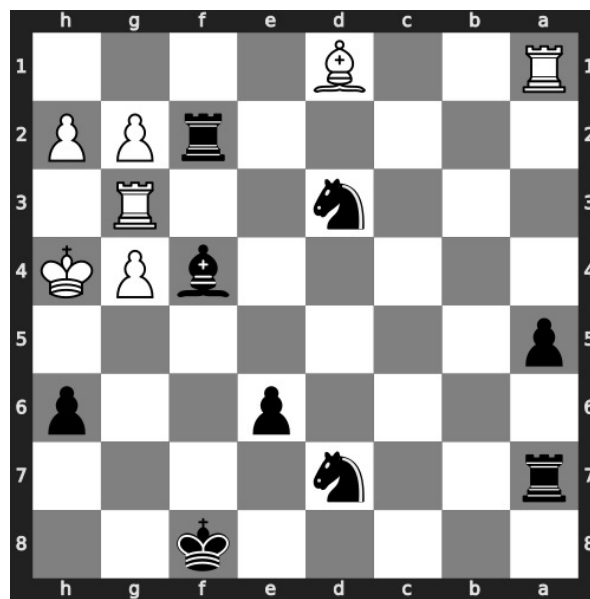


Figure 3: Initial board position of medium chess puzzle 0080

**Move 1** Move by black

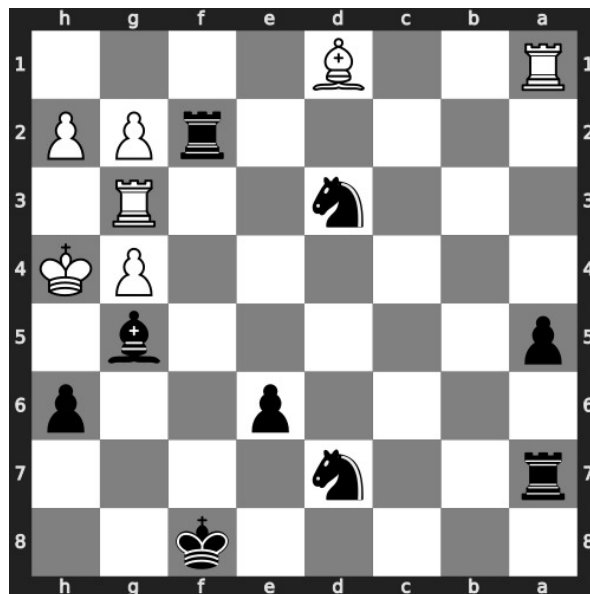


Figure 4: Bg5+ - Your bishop gives a check to the king.

**Move 2** Move by white

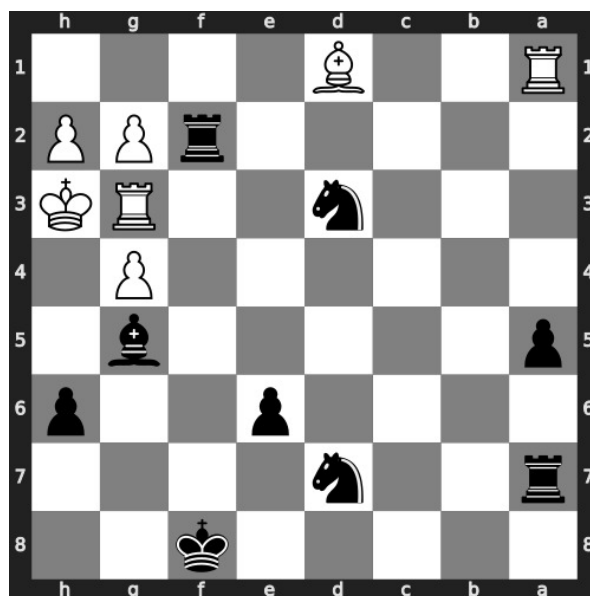


Figure 5: Kh3 - Opponent's king moves to h3 to escape from the check threat. He can not capture your bishop since it is protected by the pawn

**Move 3** Move by black

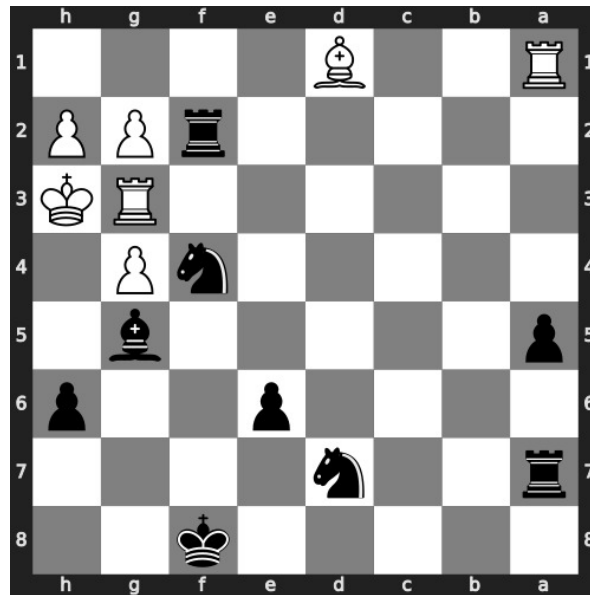


Figure 6: Nf4# - Your knight moves in and checkmate. Opponent's king has no free squares to move as it is blocked by friendly pieces. This is how you can mate in 2 moves

## Solution 2

**Initial board position** This is the initial board position of medium chess puzzle 0080.

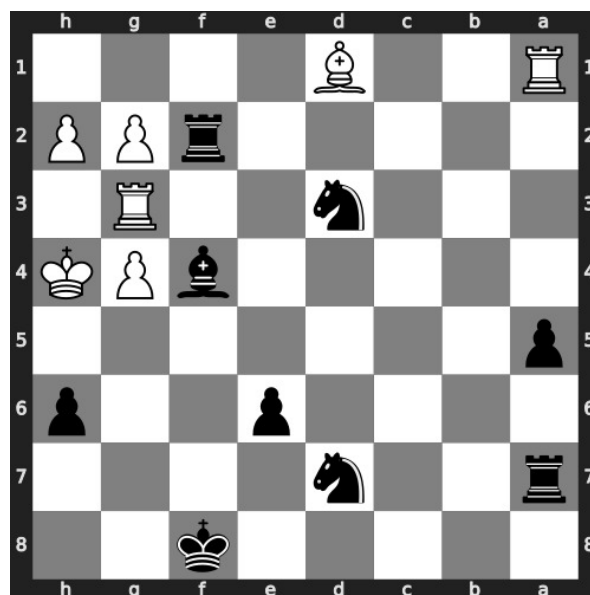


Figure 7: Initial board position of medium chess puzzle 0080

**Move 1** Move by black

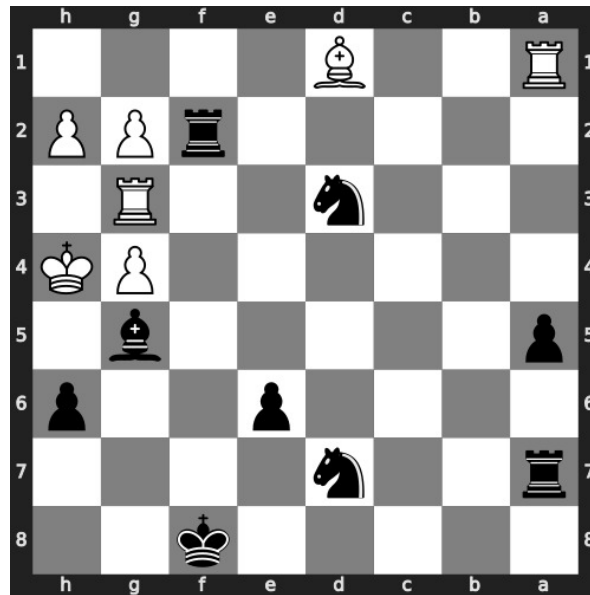


Figure 8: Bg5+ - Your bishop gives a check to the king.

**Move 2** Move by white

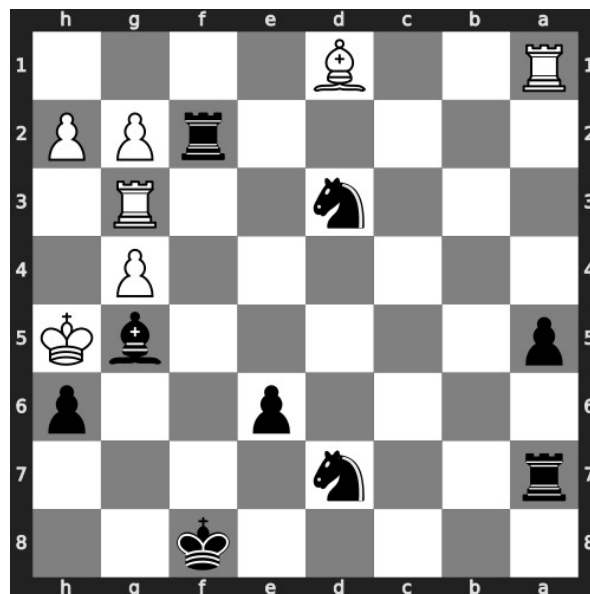


Figure 9: Kh5 - Opponent's king moves to h5 to escape from the check threat. He can not capture your bishop since it is protected by the pawn

**Move 3** Move by black



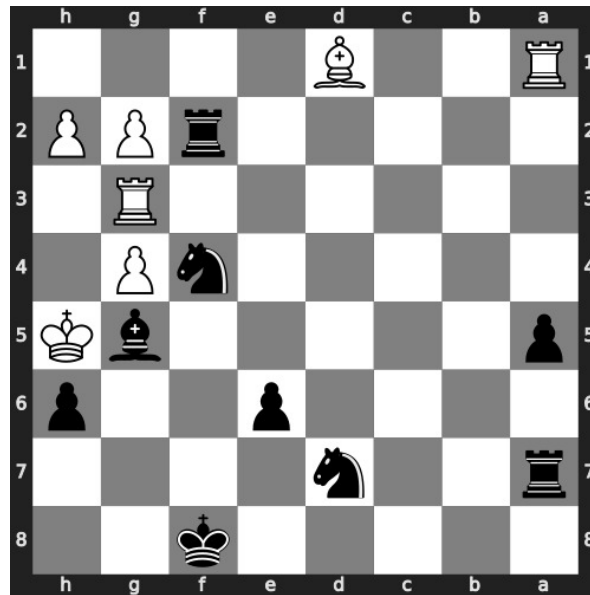


Figure 10: Nf4# - Your knight moves in and checkmate. Opponent's king has no free squares to move as it is blocked by friendly pieces. This is how you can mate in 2 moves

### Right moves for the solution to the medium chess puzzle 0080

Based on the objective of the puzzle, you have to make the right moves. Following are the right moves

1. Bg5+, Nf4#

### Explanation for the moves

1. Bg5+ - Your bishop gives a check to the king.
2. Kh3 - Opponent's king moves to h3 to escape from the check threat. He can not capture your bishop since it is protected by the pawn
3. Kh5 - Opponent's king moves to h5 to escape from the check threat. He can not capture your bishop since it is protected by the pawn
4. Nf4# - Your knight moves in and checkmate. Opponent's king has no free squares to move as it is blocked by friendly pieces. This is how you can mate in 2 moves
5. For right move - Your movement of bishop and knights fetched you a win in 2 moves. Keep up the good work
6. For wrong move - You could have moved your bishop and knight to mate in 2 moves. Try again

## Categories of medium chess puzzle 0080

This medium chess puzzle falls in these categories.

1. [Medium chess puzzles](#)
2. [Mate in 2 puzzles in chess](#)
3. [Endgame puzzles in chess](#)
4. [Strategy puzzles in chess](#)
5. [Knight puzzles in chess](#)
6. [Bishop puzzles in chess](#)

### medium chess puzzle 0080 chart



Figure 11: medium chess puzzle 80 chart 1

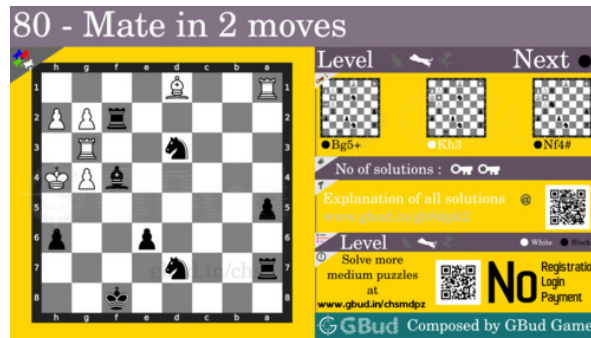


Figure 12: medium chess puzzle 80 chart 2

## How to view the solution to medium chess puzzle 0080

To view the [solution to this puzzle](#), follow the steps given below

1. Go to the [puzzle page](#)
2. Click the solution button (Key as shown [below](#)) to view the solution



Figure 13: Click the solution button to view solutions @ <https://gbud.in/gb8dpk2>

## How to get help for moves in the medium chess puzzle 0080

To get help or the possible next moves in the puzzle, , follow the steps given below

1. Go to the [puzzle page](#)
2. Click the help button (exclamation mark as shown [below](#)) to get help or suggestion on next possible [move](#)



Figure 14: Click the help button to get help on next move @ <https://gbud.in/gb8dpk2>



Figure 15: Solve more medium puzzles @ <https://gbud.in/chsmdpz>



Figure 16: Solve other puzzles @ <https://gbud.in/chsgppz>

## Play chess for free

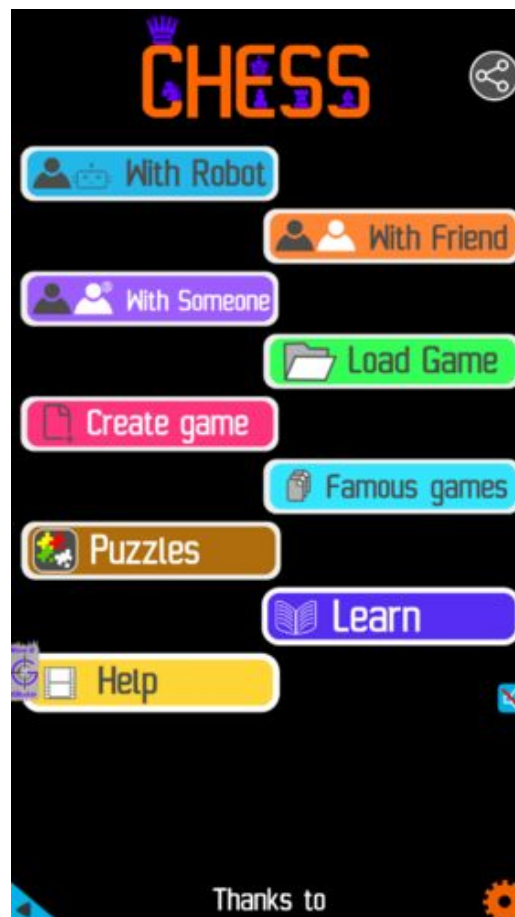


Figure 17: Play chess online for free. Solve puzzles and play with friends

Play chess for free at <https://gbud.in/chs>

We present you a platform to play chess online with friends for free. No need to install any app. You can play chess for free without registration or login.

Simple. You can do several chess related activities.

1. [solve chess puzzles](#)
2. [learn about chess](#)
3. [play chess with computer](#)
4. [play chess with friend](#)
5. [create your own chess games](#)

6. [fen viewer](#)
7. [fen editor](#)
8. [fen generator](#)
9. [pgn viewer](#)
10. [chess board editor](#)
11. [view famous chess games.](#)



Figure 18: Solve this puzzle online by scanning this QR code or go to the link below

<https://gbud.in/gb8dpk2>

Read the latest article on Medium Chess puzzle # 0080 - Mate in 2 moves by scanning this QR code or click the link

Previous article : [« Medium Chess puzzle # 0079 - Gain queen in three moves](#)

Next article : [Medium chess puzzles »](#)

[Back to top](#)

[Contact Us](#)