



## Medium Chess Puzzle # 0074

By

G Bud Games  
<https://gbud.in>

November 17, 2021

## Contents

<b>Medium Chess puzzle # 0074 - How will you save your queen</b>	<b>4</b>
Medium chess puzzle 0074 . . . . .	4
Solution to medium chess puzzle 0074 . . . . .	5
Solution 1 . . . . .	5
Right moves for the solution to the medium chess puzzle 0074	8
Explanation for the moves . . . . .	9
Categories of medium chess puzzle 0074 . . . . .	9
How to view the solution to medium chess puzzle 0074 . . . . .	9
How to get help for moves in the medium chess puzzle 0074 . . . . .	10
Play chess for free . . . . .	12

## List of Figures

1	<a href="https://gbud.in/g8y7xd2">Solve this medium chess puzzle 0074. How will you save your queen @ https://gbud.in/g8y7xd2</a> . . . . .	4
2	<a href="https://gbud.in/g8y7xd2">Solve this medium chess puzzle online with solution @ https://gbud.in/g8y7xd2</a> . . . . .	4
3	<a href="#">Initial board position of medium chess puzzle 0074</a> . . . . .	5
4	<a href="#">Rhe8 - Opponent's rook pins your queen to your king. Your queen can not move out of e file. Queen can not capture opponent's rook since it is supported by another rook in battery formation</a> . . . . .	6
5	<a href="#">Bb5+ - The only way to unpin your queen is to remove the rook that is giving check. Since the opponent's king and the rook are on the same diagonal, your bishop gives a check so that it is having a x-ray attack on opponent's rook through their king. This is a skewer attack</a> . . . . .	6
6	<a href="#">Kc7 - Since opponent's king can not capture your bishop due to the support from the knight, it moves to c7 to escape from the check threat.</a> . . . . .	7
7	<a href="#">Bxe8 - Your bishop captures the rook by sacrificing itself to save the queen</a> . . . . .	7
8	<a href="#">Rxe8 - Remaining rook captures your bishop</a> . . . . .	8
9	<a href="#">Qxe8 - Your queen captures the hanging rook. This is how you can save your queen.</a> . . . . .	8
10	<a href="https://gbud.in/g8y7xd2">Click the solution button to view solutions @ https://gbud.in/g8y7xd2</a> . . . . .	10

11	Click the help button to get help on next move @ <a href="https://gbud.in/g8y7xd2">https://gbud.in/g8y7xd2</a> . . . . .	11
12	Solve more medium puzzles @ <a href="https://gbud.in/chsmdpz">https://gbud.in/chsmdpz</a> . . . . .	11
13	Solve other puzzles @ <a href="https://gbud.in/chsgppz">https://gbud.in/chsgppz</a> . . . . .	11
14	Play chess online for free. Solve puzzles and play with friends	12
15	Solve this puzzle online by scanning this QR code or go to the link below . . . . .	13

## Medium Chess puzzle # 0074 - How will you save your queen

Solve this medium chess puzzle and improve your chess games through improvement of your chess strategies and chess tactics.

Puzzle No : 0074

Difficulty level : medium

Description : How will you save your queen

Next Move : White

Player level : Intermediate

Short URL for puzzle : <https://gbud.in/g8y7xd2>

### Medium chess puzzle 0074

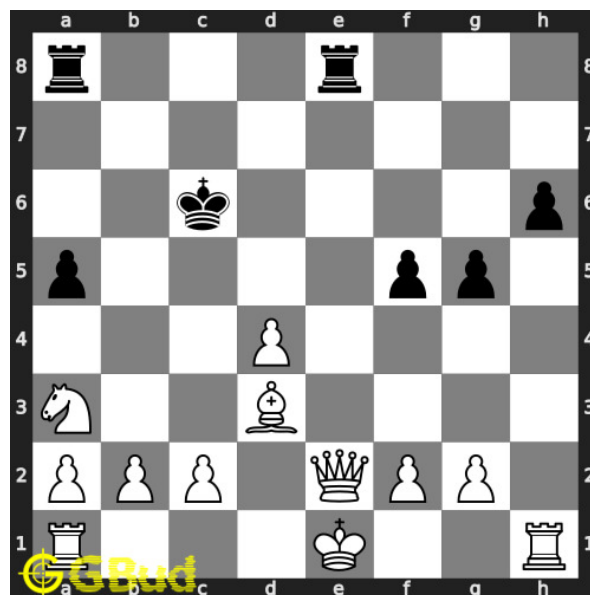


Figure 1: Solve this medium chess puzzle 0074. How will you save your queen @ <https://gbud.in/g8y7xd2>



Figure 2: Solve this medium chess puzzle online with solution @ <https://gbud.in/g8y7xd2>

## Solution to medium chess puzzle 0074

At this puzzle, next **move** is by **White**. The objective of the puzzle is to how will you save your queen.

See the interactive solution at the [puzzle page](#)

### Solution 1

**Initial board position** This is the initial board position of medium chess puzzle 0074.

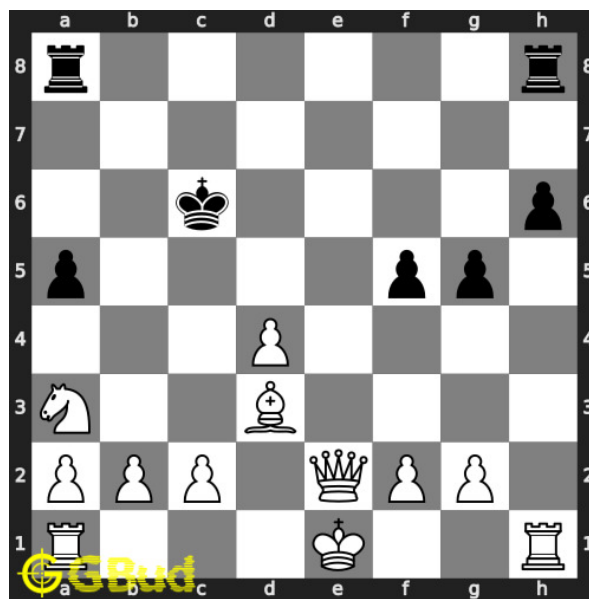


Figure 3: Initial board position of medium chess puzzle 0074

**Move 1** Move by black

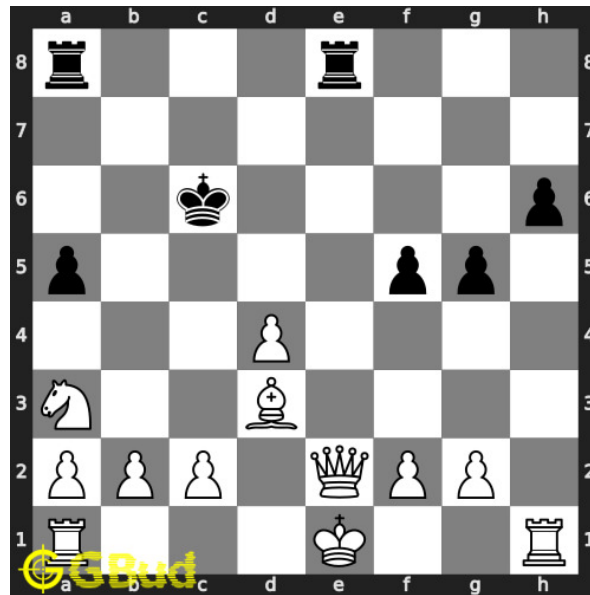


Figure 4: Rhe8 - Opponent's rook pins your queen to your king. Your queen can not move out of e file. Queen can not capture opponent's rook since it is supported by another rook in battery formation

**Move 2** Move by white

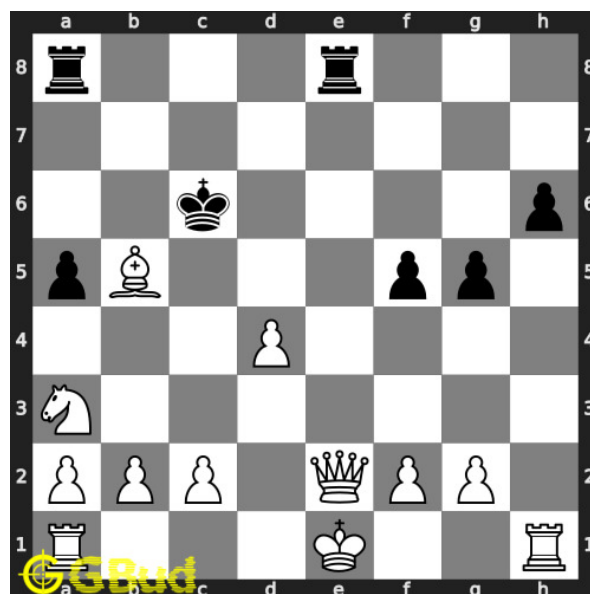


Figure 5: Bb5+ - The only way to unpin your queen is to remove the rook that is giving check. Since the opponent's king and the rook are on the same diagonal, your bishop gives a check so that it is having a x-ray attack on opponent's rook through their king. This is a skewer attack

**Move 3** Move by black

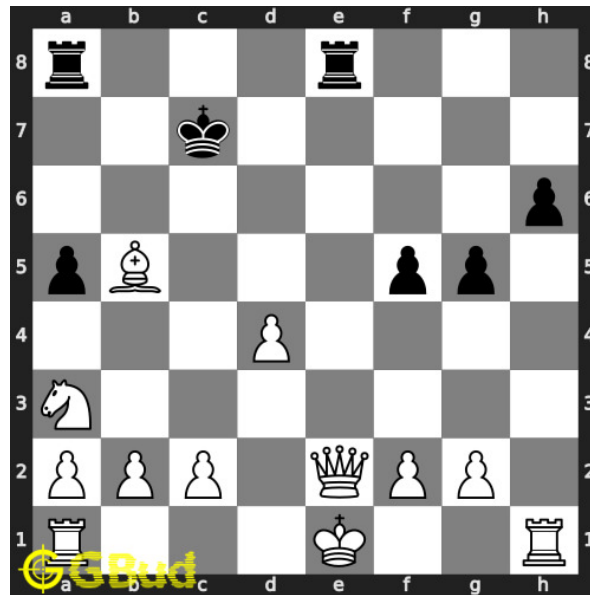


Figure 6: Kc7 - Since opponent's king can not capture your bishop due to the support from the knight, it moves to c7 to escape from the check threat.

**Move 4** Move by white

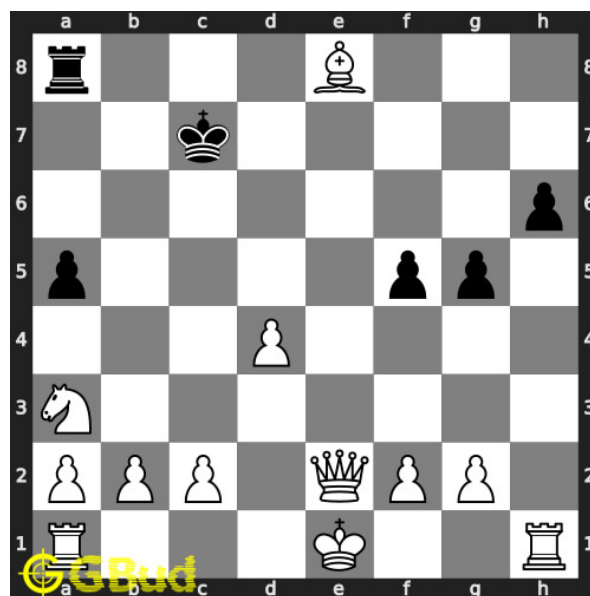


Figure 7: Bxe8 - Your bishop captures the rook by sacrificing itself to save the queen

**Move 5** Move by black

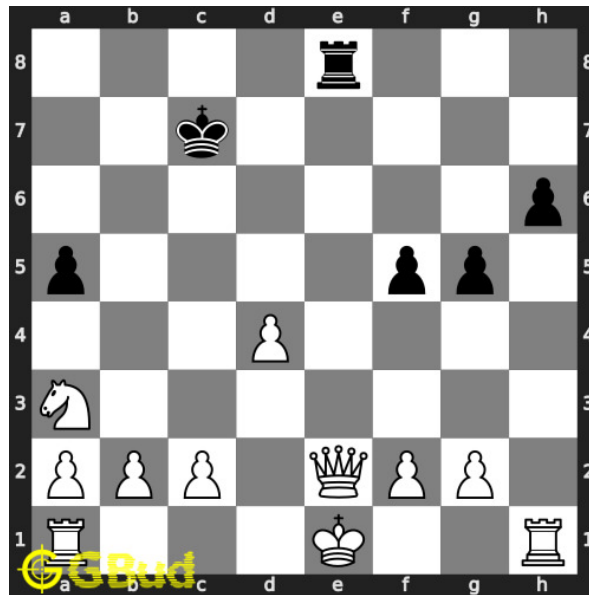


Figure 8: Rxe8 - Remaining rook captures your bishop

**Move 6** Move by white

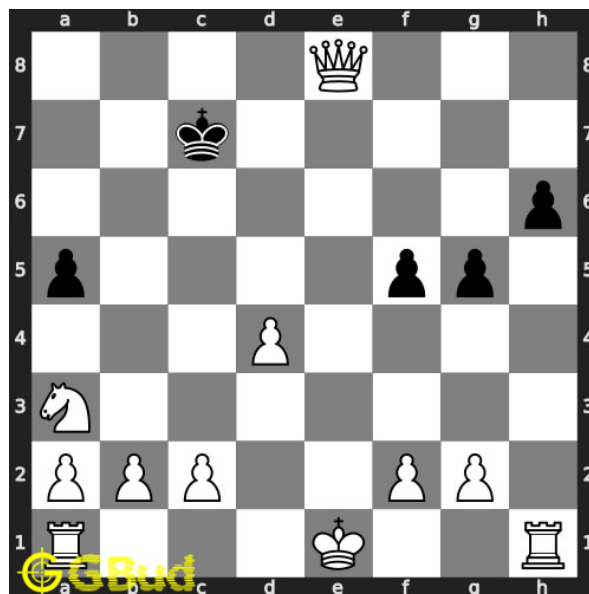


Figure 9: Qxe8 - Your queen captures the hanging rook. This is how you can save your queen.

### Right moves for the solution to the medium chess puzzle 0074

Based on the objective of the puzzle, you have to make the right moves. Following are the right moves

1. Bb5+, Bxe8, Qxe8



## Explanation for the moves

1. Rhe8 - Opponent's rook pins your queen to your king. Your queen can not move out of e file. Queen can not capture opponent's rook since it is supported by another rook in battery formation
2. Bb5+ - The only way to unpin your queen is to remove the rook that is giving check. Since the opponent's king and the rook are on the same diagonal, your bishop gives a check so that it is having a x-ray attack on opponent's rook through their king. This is a skewer attack
3. Kc7 - Since opponent's king can not capture your bishop due to the support from the knight, it moves to c7 to escape from the check threat.
4. Bxe8 - Your bishop captures the rook by sacrificing itself to save the queen
5. Rxe8 - Remaining rook captures your bishop
6. Qxe8 - Your queen captures the hanging rook. This is how you can save your queen.
7. For right move - You have safely unpinned your queen using the bishop. You did a great job
8. For wrong move - You could have captured the rook by using your bishop. Try again

## Categories of medium chess puzzle 0074

This medium chess puzzle falls in these categories.

1. [Medium chess puzzles](#)
2. [Sacrifice puzzles in chess](#)
3. [Battery puzzles in chess](#)
4. [Strategy puzzles in chess](#)
5. [Skewer puzzles in chess](#)
6. [Pin puzzles in chess](#)
7. [Rook puzzles in chess](#)
8. [Save puzzles in chess](#)
9. [Bishop puzzles in chess](#)

## How to view the solution to medium chess puzzle 0074

To view the [solution to this puzzle](#), follow the steps given below

1. Go to the [puzzle page](#)
2. Click the solution button (Key as shown [below](#)) to view the solution



Figure 10: Click the solution button to view solutions @ <https://gbud.in/g8y7xd2>

## How to get help for moves in the medium chess puzzle 0074

To get help or the possible next moves in the puzzle, , follow the steps given below

1. Go to the [puzzle page](#)
2. Click the help button (exclamation mark as shown [below](#)) to get help or suggestion on next possible [move](#)



Figure 11: Click the help button to get help on next move @ <https://gbud.in/g8y7xd2>



Figure 12: Solve more medium puzzles @ <https://gbud.in/chsmdpz>



Figure 13: Solve other puzzles @ <https://gbud.in/chsgppz>

## Play chess for free



Figure 14: Play chess online for free. Solve puzzles and play with friends

Play chess for free at <https://gbud.in/chs>

We present you a platform to play chess online with friends for free. No need to install any app. You can play chess for free without registration or login.

Simple. You can do several chess related activities.

1. [solve chess puzzles](#)
2. [learn about chess](#)
3. [play chess with computer](#)
4. [play chess with friend](#)
5. [create your own chess games](#)
6. [fen viewer](#)
7. [fen editor](#)
8. [fen generator](#)
9. [pgn viewer](#)
10. [chess board editor](#)

11. [view famous chess games.](#)



Figure 15: Solve this puzzle online by scanning this QR code or go to the link below

<https://gbud.in/g8y7xd2>

Read the latest article on Medium Chess puzzle # 0074 - How will you save your queen by scanning this QR code or click the link

Previous article : [« Medium Chess puzzle # 0073 - Gain opponent's queen in two moves](#)

Next article : [Medium chess puzzles »](#)

[Back to top](#)

[Contact Us](#)

© GBud Games 2021