



Medium Chess Puzzle # 0072

By

G Bud Games
<https://gbud.in>

November 14, 2021

Contents

Medium Chess puzzle # 0072 - Mate in 2 moves	3
Medium chess puzzle 0072	3
Solution to medium chess puzzle 0072	4
Solution 1	4
Right moves for the solution to the medium chess puzzle 0072	6
Explanation for the moves	6
Categories of medium chess puzzle 0072	7
How to view the solution to medium chess puzzle 0072	7
How to get help for moves in the medium chess puzzle 0072	8
Play chess for free	9

List of Figures

1	Solve this medium chess puzzle 0072. Mate in 2 moves @ https://gbud.in/gdtgb42	3
2	Solve this medium chess puzzle online with solution @ https://gbud.in/gdtgb42	3
3	Initial board position of medium chess puzzle 0072	4
4	Qxc6+ - Queen captures the pawn and gives a check. With this check your queen forks opponent's king and rook	5
5	Kf8 - Opponent's king can not come to d8 or e7 due to the attack from your bishop. Hence he moves to f8 which is the only free square available.	5
6	Qxa8# - Queen captures the rook and checkmate. Opponent's king can not move since it is blocked by friendly pieces. This is called back-rank mate. This is how you can mate in two moves	6
7	Click the solution button to view solutions @ https://gbud.in/gdtgb42	7
8	Click the help button to get help on next move @ https://gbud.in/gdtgb42	8
9	Solve more medium puzzles @ https://gbud.in/chsmdpz	8
10	Solve other puzzles @ https://gbud.in/chsgppz	8
11	Play chess online for free. Solve puzzles and play with friends	9
12	Solve this puzzle online by scanning this QR code or go to the link below	10

Medium Chess puzzle # 0072 - Mate in 2 moves

Solve this medium chess puzzle and improve your chess games through improvement of your chess strategies and chess tactics.

Puzzle No : 0072

Difficulty level : medium

Description : Mate in 2 moves

Next Move : White

Player level : Intermediate

Short URL for puzzle : <https://gbud.in/gdtgb42>

Medium chess puzzle 0072

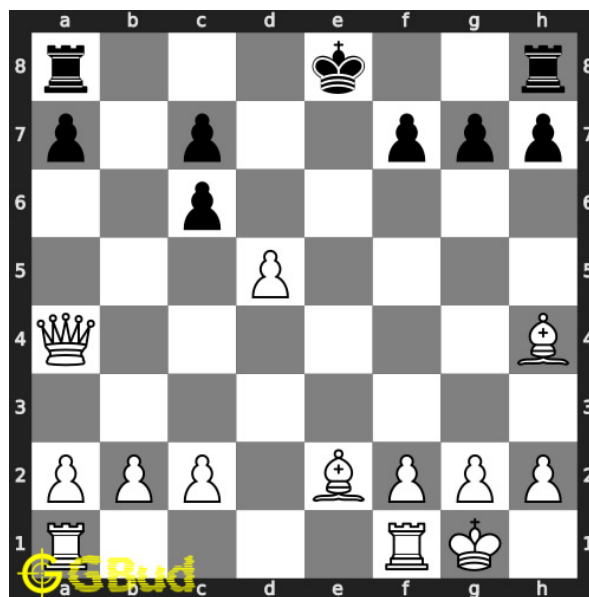


Figure 1: Solve this medium chess puzzle 0072. Mate in 2 moves @ <https://gbud.in/gdtgb42>



Figure 2: Solve this medium chess puzzle online with solution @ <https://gbud.in/gdtgb42>

Solution to medium chess puzzle 0072

At this puzzle, next **move** is by **White**. The objective of the puzzle is to mate in 2 moves.

See the interactive solution at the [puzzle page](#)

Solution 1

Initial board position This is the initial board position of medium chess puzzle 0072.

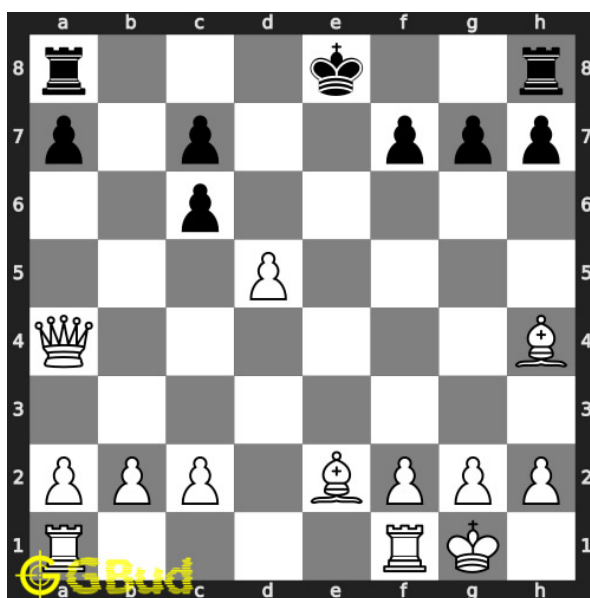


Figure 3: Initial board position of medium chess puzzle 0072

Move 1 Move by white

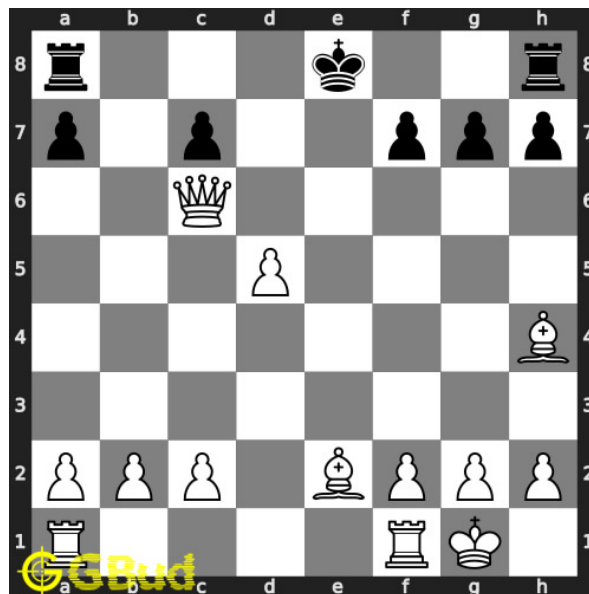


Figure 4: Qxc6+ - Queen captures the pawn and gives a check. With this check your queen forks opponent's king and rook

Move 2 Move by black

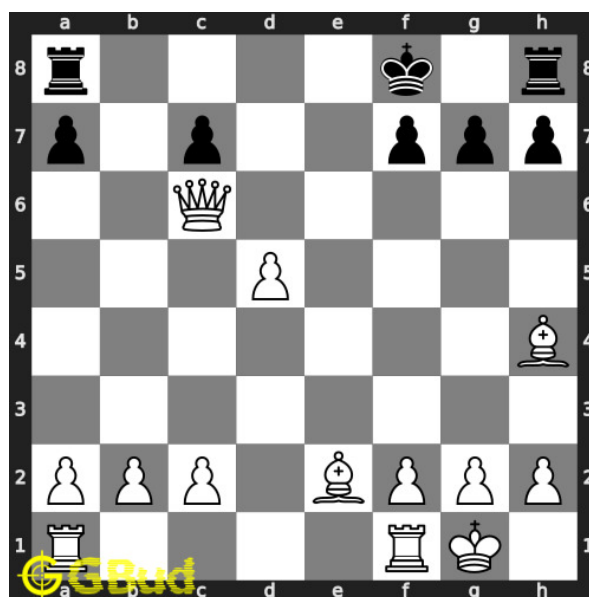


Figure 5: Kf8 - Opponent's king can not come to d8 or e7 due to the attack from your bishop. Hence he moves to f8 which is the only free square available.

Move 3 Move by white

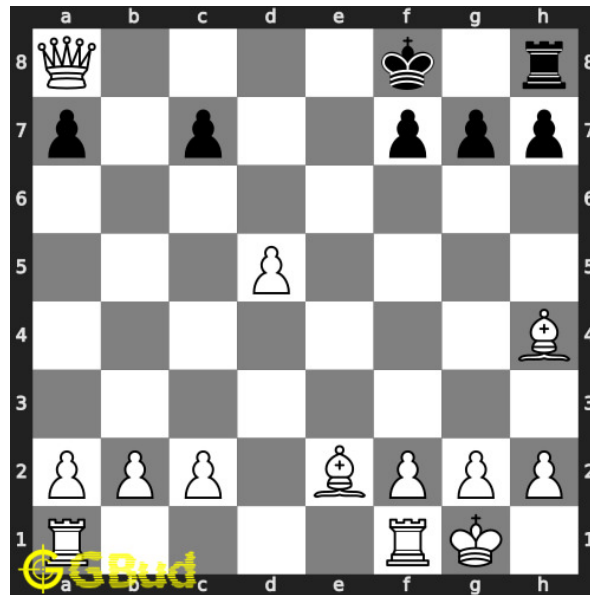


Figure 6: Qxa8# - Queen captures the rook and checkmate. Opponent's king can not move since it is blocked by friendly pieces. This is called back-rank mate. This is how you can mate in two moves

Right moves for the solution to the medium chess puzzle 0072

Based on the objective of the puzzle, you have to make the right moves. Following are the right moves

1. Qxc6+, Qxa8#

Explanation for the moves

1. Qxc6+ - Queen captures the pawn and gives a check. With this check your queen forks opponent's king and rook
2. Qxa8# - Queen captures the rook and checkmate. Opponent's king can not move since it is blocked by friendly pieces. This is called back-rank mate. This is how you can mate in two moves
3. Kf8 - Opponent's king can not come to d8 or e7 due to the attack from your bishop. Hence he moves to f8 which is the only free square available.
4. For right move - You have moved your queen nicely to have a mate in 2 moves. Your moves were fantastic
5. For wrong move - You could have had a checkmate by moving your queen to a8 after a check. Try again

Categories of medium chess puzzle 0072

This medium chess puzzle falls in these categories.

1. [Medium chess puzzles](#)
2. [Mate in 2 puzzles in chess](#)
3. [Endgame puzzles in chess](#)
4. [Fork puzzles in chess](#)
5. [Strategy puzzles in chess](#)
6. [Mate pattern puzzles in chess](#)
7. [Queen puzzles in chess](#)

How to view the solution to medium chess puzzle 0072

To view the [solution to this puzzle](#), follow the steps given below

1. Go to the [puzzle page](#)
2. Click the solution button (Key as shown [below](#)) to view the solution



Figure 7: Click the solution button to view solutions @ <https://gbud.in/gdtgb42>

How to get help for moves in the medium chess puzzle 0072

To get help or the possible next moves in the puzzle, , follow the steps given below

1. Go to the [puzzle page](#)
2. Click the help button (exclamation mark as shown [below](#)) to get help or suggestion on next possible [move](#)



Figure 8: Click the help button to get help on next move @ <https://gbud.in/gdtgb42>



Figure 9: Solve more medium puzzles @ <https://gbud.in/chsmdpz>



Figure 10: Solve other puzzles @ <https://gbud.in/chsgppz>

Play chess for free

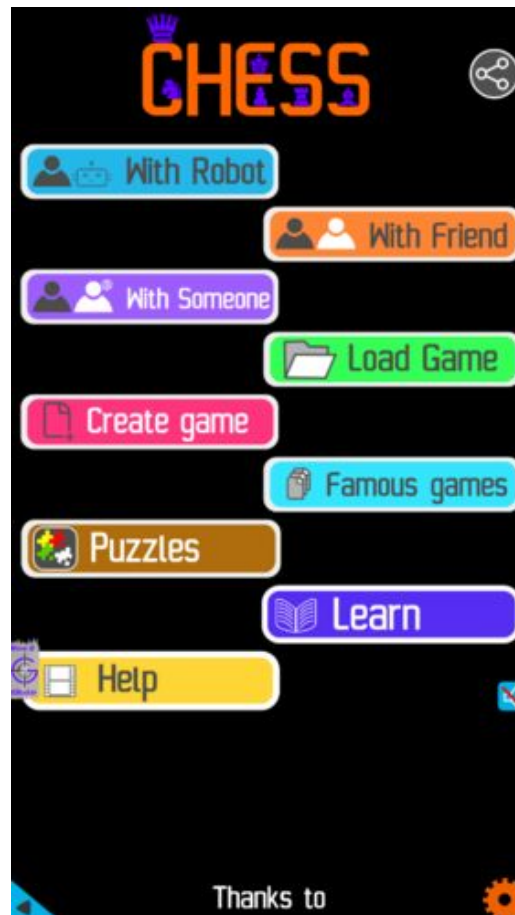


Figure 11: Play chess online for free. Solve puzzles and play with friends

Play chess for free at <https://gbud.in/chs>

We present you a platform to play chess online with friends for free. No need to install any app. You can play chess for free without registration or login.

Simple. You can do several chess related activities.

1. [solve chess puzzles](#)
2. [learn about chess](#)
3. [play chess with computer](#)
4. [play chess with friend](#)
5. [create your own chess games](#)

6. [fen viewer](#)
7. [fen editor](#)
8. [fen generator](#)
9. [pgn viewer](#)
10. [chess board editor](#)
11. [view famous chess games.](#)



Figure 12: Solve this puzzle online by scanning this QR code or go to the link below

<https://gbud.in/gdtgb42>

Read the latest article on Medium Chess puzzle # 0072 - Mate in 2 moves by scanning this QR code or click the link

Previous article : [« Medium Chess puzzle # 0071 - Mate in 2 moves](#)

Next article : [Medium chess puzzles »](#)

[Back to top](#)

[Contact Us](#)