



## Medium Chess Puzzle # 0070

By

G Bud Games  
<https://gbud.in>

November 11, 2021

## Contents

<b>Medium Chess puzzle # 0070 - Mate in 2 moves</b>	<b>4</b>
Medium chess puzzle 0070 . . . . .	4
Solution to medium chess puzzle 0070 . . . . .	5
Solution 1 . . . . .	5
Right moves for the solution to the medium chess puzzle 0070	7
Explanation for the moves . . . . .	8
Categories of medium chess puzzle 0070 . . . . .	8
How to view the solution to medium chess puzzle 0070 . . . . .	8
How to get help for moves in the medium chess puzzle 0070 . . . . .	9
Play chess for free . . . . .	11

## List of Figures

1	Solve this medium chess puzzle 0070. Mate in 2 moves @ <a href="https://gbud.in/gh93mq2">https://gbud.in/gh93mq2</a> . . . . .	4
2	Solve this medium chess puzzle online with solution @ <a href="https://gbud.in/gh93mq2">https://gbud.in/gh93mq2</a> . . . . .	4
3	Initial board position of medium chess puzzle 0070 . . . . .	5
4	Rxf5 - Opponent's rook gained a piece and pinned your knight to your king so that they can gain that also in the next move. But this is a mistake . . . . .	6
5	Ra8+ - Your rook moves to a8 and gives a check. Had the opponent's rook been at f8, this move would not be possible. The opponent's mistake was used to gain an advantage here.	6
6	Rf8 - Opponent realised the mistake and brings their rook back to f8. But this will not stop the checkmate as the rook is not supported . . . . .	7
7	Rxf8# - Your rook captures opponent's rook and checkmate. THE king can not come to g7 due to the attack from your pawn. This is how you can mate in 2 moves . . . . .	7
8	Click the solution button to view solutions @ <a href="https://gbud.in/gh93mq2">https://gbud.in/gh93mq2</a> . . . . .	9
9	Click the help button to get help on next move @ <a href="https://gbud.in/gh93mq2">https://gbud.in/gh93mq2</a> . . . . .	10
10	Solve more medium puzzles @ <a href="https://gbud.in/chsmdpz">https://gbud.in/chsmdpz</a> . . . . .	10
11	Solve other puzzles @ <a href="https://gbud.in/chsgppz">https://gbud.in/chsgppz</a> . . . . .	10
12	Play chess online for free. Solve puzzles and play with friends	11

13 Solve this puzzle online by scanning this QR code or go to  
the link below . . . . . 12

## Medium Chess puzzle # 0070 - Mate in 2 moves

Solve this medium chess puzzle and improve your chess games through improvement of your chess strategies and chess tactics.

Puzzle No : 0070

Difficulty level : medium

Description : Mate in 2 moves

Next Move : White

Player level : Intermediate

Short URL for puzzle : <https://gbud.in/gh93mq2>

### Medium chess puzzle 0070

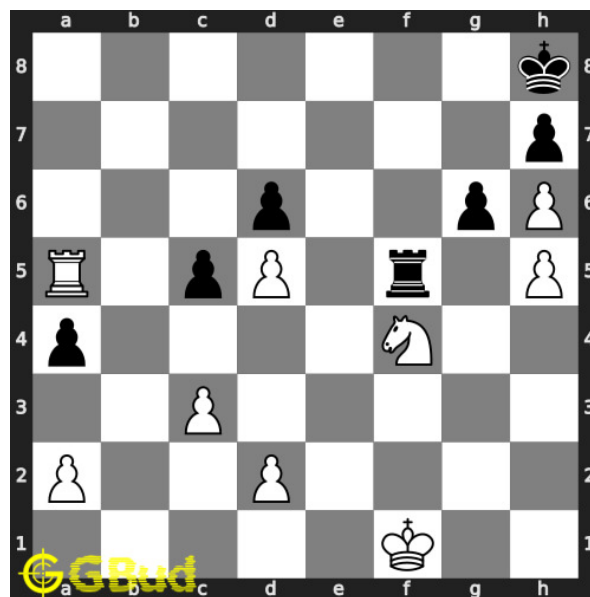


Figure 1: Solve this medium chess puzzle 0070. Mate in 2 moves @ <https://gbud.in/gh93mq2>



Figure 2: Solve this medium chess puzzle online with solution @ <https://gbud.in/gh93mq2>

## Solution to medium chess puzzle 0070

At this puzzle, next **move** is by **White**. The objective of the puzzle is to mate in 2 moves.

See the interactive solution at the [puzzle page](#)

### Solution 1

**Initial board position** This is the initial board position of medium chess puzzle 0070.

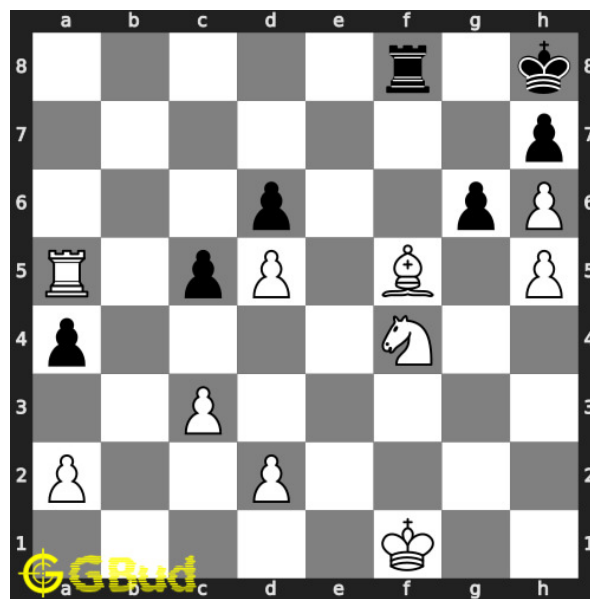


Figure 3: Initial board position of medium chess puzzle 0070

**Move 1** Move by black

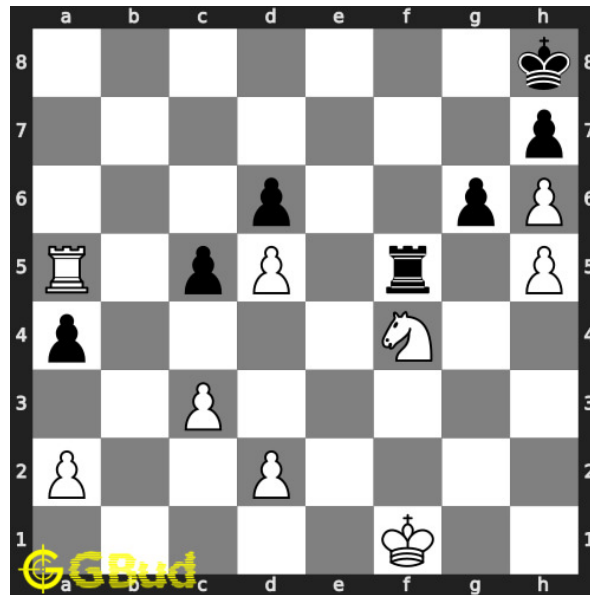


Figure 4: Rxf5 - Opponent's rook gained a piece and pinned your knight to your king so that they can gain that also in the next move. But this is a mistake

**Move 2** Move by white

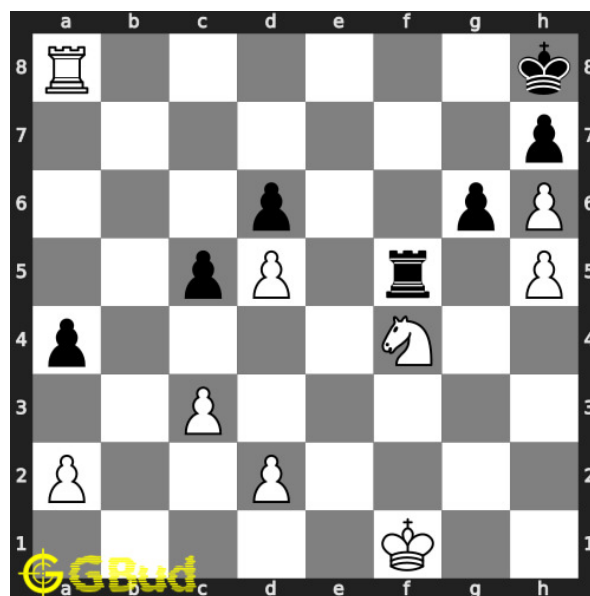


Figure 5: Ra8+ - Your rook moves to a8 and gives a check. Had the opponent's rook been at f8, this move would not be possible. The opponent's mistake was used to gain an advantage here.

**Move 3** Move by black

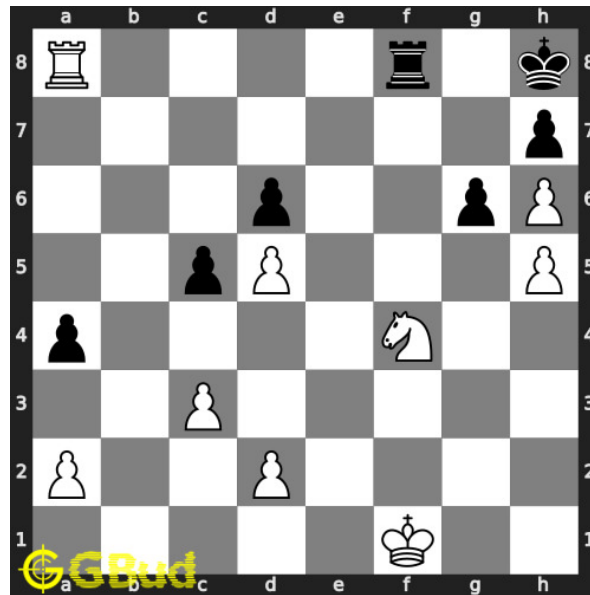


Figure 6: Rf8 - Opponent realised the mistake and brings their rook back to f8. But this will not stop the checkmate as the rook is not supported

**Move 4** Move by white

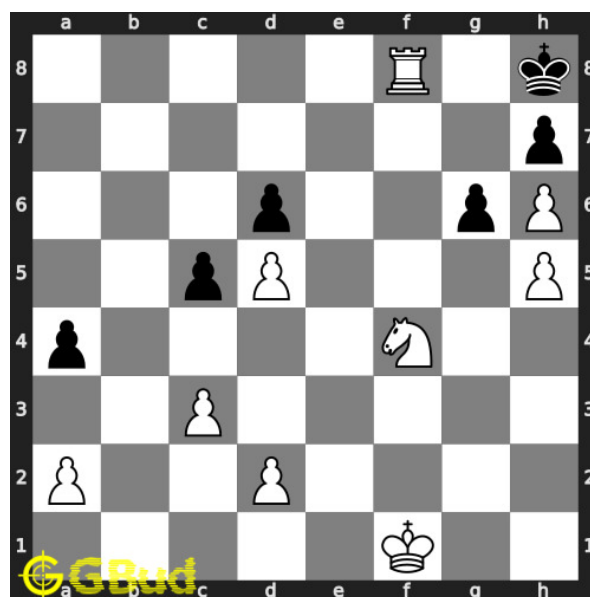


Figure 7: Rxf8# - Your rook captures opponent's rook and checkmate. The king can not come to g7 due to the attack from your pawn. This is how you can mate in 2 moves

### Right moves for the solution to the medium chess puzzle 0070

Based on the objective of the puzzle, you have to make the right moves. Following are the right moves

1. Ra8+, Rxf8#

### Explanation for the moves

1. Rxf5 - Opponent's rook gained a piece and pinned your knight to your king so that they can gain that also in the next move. But this is a mistake
2. Ra8+ - Your rook moves to a8 and gives a check. Had the opponent's rook been at f8, this move would not be possible. The opponent's mistake was used to gain an advantage here.
3. Rxf8# - Your rook captures opponent's rook and checkmate. The king can not come to g7 due to the attack from your pawn. This is how you can mate in 2 moves
4. Rf8 - Opponent realised the mistake and brings their rook back to f8. But this will not stop the checkmate as the rook is not supported
5. For right move - You did not bother losing your pieces because you knew how to win the game. It was a wise decision
6. For wrong move - You could have had a checkmate in 2 moves. You missed it. Try again

### Categories of medium chess puzzle 0070

This medium chess puzzle falls in these categories.

1. [Medium chess puzzles](#)
2. [Sacrifice puzzles in chess](#)
3. [Mate in 2 puzzles in chess](#)
4. [Endgame puzzles in chess](#)
5. [Strategy puzzles in chess](#)
6. [Pin puzzles in chess](#)
7. [Rook puzzles in chess](#)

### How to view the solution to medium chess puzzle 0070

To view the [solution to this puzzle](#), follow the steps given below

1. Go to the [puzzle page](#)
2. Click the solution button (Key as shown [below](#)) to view the solution





Figure 8: Click the solution button to view solutions @ <https://gbud.in/gh93mq2>

## How to get help for moves in the medium chess puzzle 0070

To get help or the possible next moves in the puzzle, , follow the steps given below

1. Go to the [puzzle page](#)
2. Click the help button (exclamation mark as shown [below](#)) to get help or suggestion on next possible [move](#)



Figure 9: Click the help button to get help on next move @ <https://gbud.in/gh93mq2>



Figure 10: Solve more medium puzzles @ <https://gbud.in/chsmdpz>



Figure 11: Solve other puzzles @ <https://gbud.in/chsgppz>

## Play chess for free

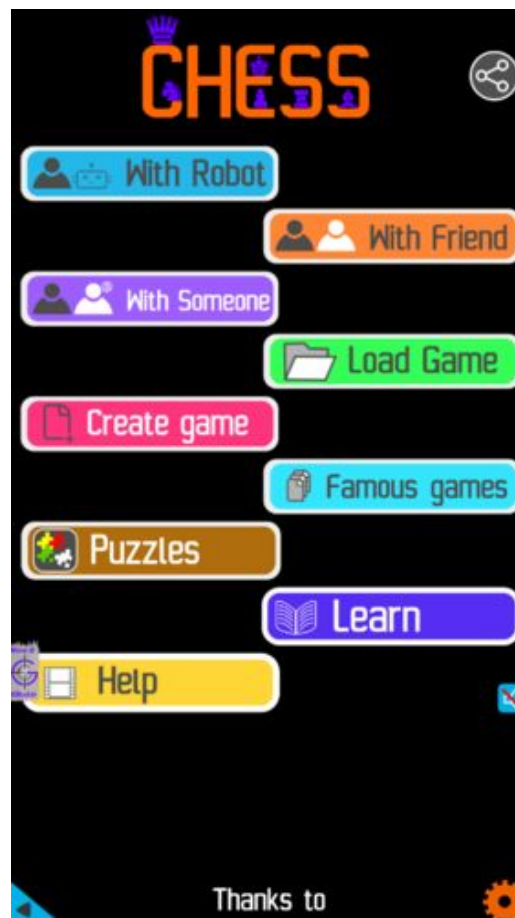


Figure 12: Play chess online for free. Solve puzzles and play with friends

Play chess for free at <https://gbud.in/chs>

We present you a platform to play chess online with friends for free. No need to install any app. You can play chess for free without registration or login.

Simple. You can do several chess related activities.

1. [solve chess puzzles](#)
2. [learn about chess](#)
3. [play chess with computer](#)
4. [play chess with friend](#)
5. [create your own chess games](#)
6. [fen viewer](#)
7. [fen editor](#)
8. [fen generator](#)
9. [pgn viewer](#)
10. [chess board editor](#)

11. [view famous chess games.](#)



Figure 13: Solve this puzzle online by scanning this QR code or go to the link below

<https://gbud.in/gh93mq2>

Read the latest article on Medium Chess puzzle # 0070 - Mate in 2 moves by scanning this QR code or click the link

Previous article : [« Medium Chess puzzle # 0069 - Gain opponent's rook](#)

Next article : [Medium chess puzzles »](#)

[Back to top](#)

[Contact Us](#)

© GBud Games 2021