



Medium Chess Puzzle # 0068

By

G Bud Games
<https://gbud.in>

November 9, 2021

Contents

Medium Chess puzzle # 0068 - Mate in 2 moves	4
Medium chess puzzle 0068	4
Solution to medium chess puzzle 0068	5
Solution 1	5
Right moves for the solution to the medium chess puzzle 0068	7
Explanation for the moves	7
Categories of medium chess puzzle 0068	8
How to view the solution to medium chess puzzle 0068	8
How to get help for moves in the medium chess puzzle 0068	9
Play chess for free	10

List of Figures

1	Solve this medium chess puzzle 0068. Mate in 2 moves @ https://gbud.in/gp74sv2	4
2	Solve this medium chess puzzle online with solution @ https://gbud.in/gp74sv2	4
3	Initial board position of medium chess puzzle 0068	5
4	Ra1 - One way to have a checkmate is to capture the pawn at d3 by the bishop and give a check. This is discouraged by the protecting rook. If you divert the rook, you can have a checkmate. The rook sacrifices itself to overload the opponent's rook. This is also a decoy move. The opponent's rook has two duties now.	6
5	Rxa1 - Opponent chose to capture the hanging rook. This move left the pawn at d3 unguarded	6
6	Bxd3# - Your bishop captures the hanging pawn and checkmate. Opponent's king can not move to other squares due to the attack from your knight. This is how you can mate in two moves	7
7	Click the solution button to view solutions @ https://gbud.in/gp74sv2	8
8	Click the help button to get help on next move @ https://gbud.in/gp74sv2	9
9	Solve more medium puzzles @ https://gbud.in/chsmdpz	9
10	Solve other puzzles @ https://gbud.in/chsgppz	9
11	Play chess online for free. Solve puzzles and play with friends	10

12 Solve this puzzle online by scanning this QR code or go to
the link below 11

Medium Chess puzzle # 0068 - Mate in 2 moves

Solve this medium chess puzzle and improve your chess games through improvement of your chess strategies and chess tactics.

Puzzle No : 0068

Difficulty level : medium

Description : Mate in 2 moves

Next Move : Black

Player level : Intermediate

Short URL for puzzle : <https://gbud.in/gp74sv2>

Medium chess puzzle 0068

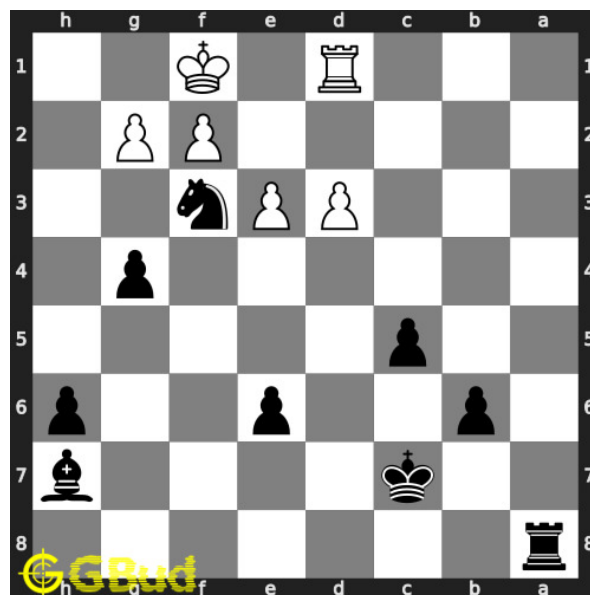


Figure 1: Solve this medium chess puzzle 0068. Mate in 2 moves @ <https://gbud.in/gp74sv2>



Figure 2: Solve this medium chess puzzle online with solution @ <https://gbud.in/gp74sv2>

Solution to medium chess puzzle 0068

At this puzzle, next **move** is by **Black**. The objective of the puzzle is to mate in 2 moves.

See the interactive solution at the [puzzle page](#)

Solution 1

Initial board position This is the initial board position of medium chess puzzle 0068.

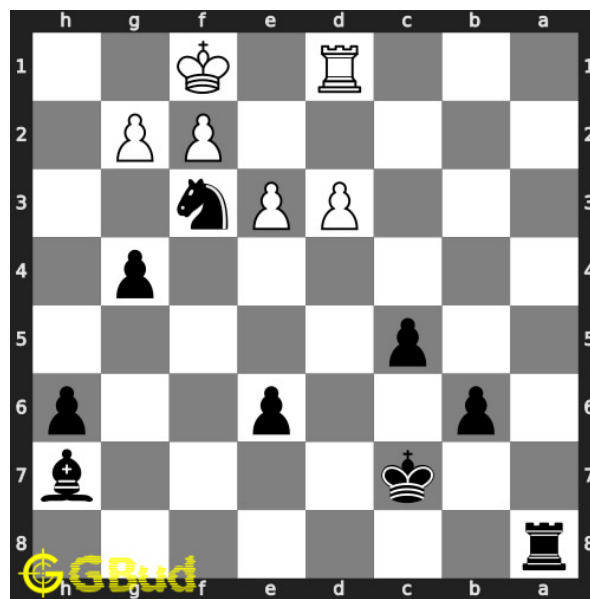


Figure 3: Initial board position of medium chess puzzle 0068

Move 1 Move by black

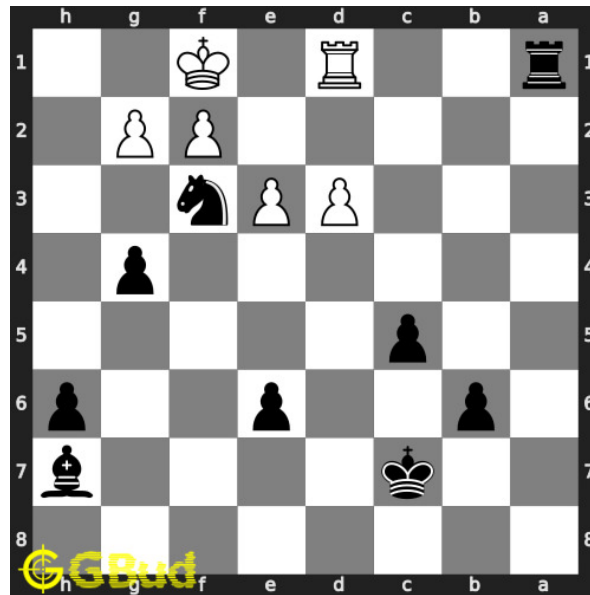


Figure 4: Ra1 - One way to have a checkmate is to capture the pawn at d3 by the bishop and give a check. This is discouraged by the protecting rook. If you divert the rook, you can have a checkmate. The rook sacrifices itself to overload the opponent's rook. This is also a decoy move. The opponent's rook has two duties now.

Move 2 Move by white

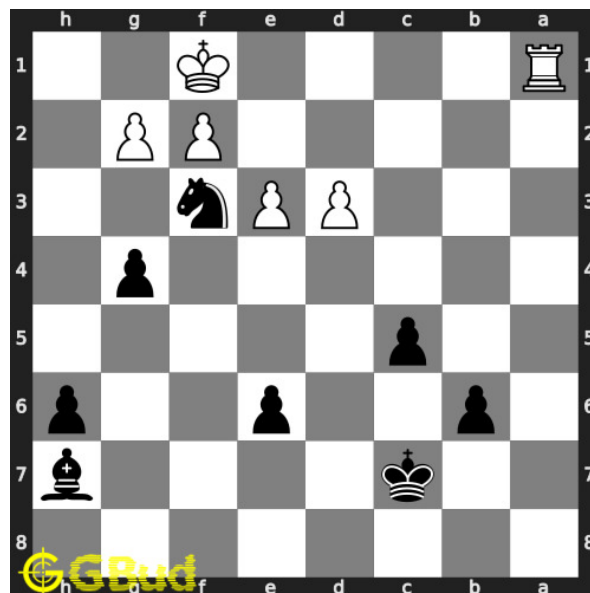


Figure 5: Rxa1 - Opponent chose to capture the hanging rook. This move left the pawn at d3 unguarded

Move 3 Move by black

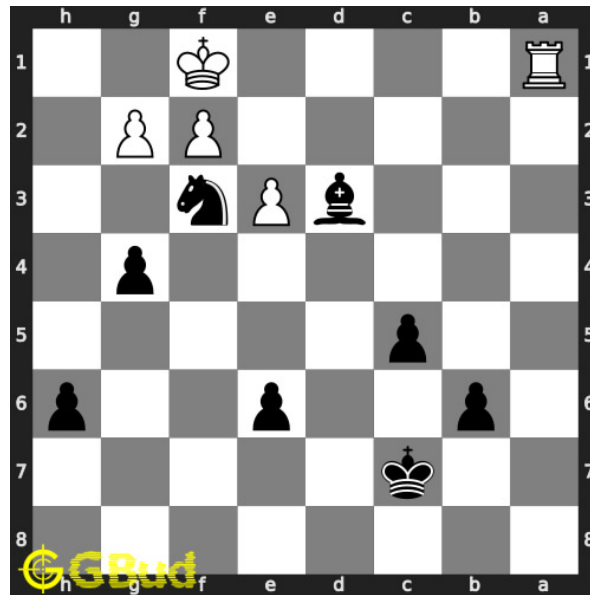


Figure 6: Bxd3# - Your bishop captures the hanging pawn and checkmate. Opponent's king can not move to other squares due to the attack from your knight. This is how you can mate in two moves

Right moves for the solution to the medium chess puzzle 0068

Based on the objective of the puzzle, you have to make the right moves. Following are the right moves

1. Ra1, Bxd3#

Explanation for the moves

1. Ra1 - One way to have a checkmate is to capture the pawn at d3 by the bishop and give a check. This is discouraged by the protecting rook. If you divert the rook, you can have a checkmate. The rook sacrifices itself to overload the opponent's rook. This is also a decoy move. The opponent's rook has two duties now.
2. Rxa1 - Opponent chose to capture the hanging rook. This move left the pawn at d3 unguarded
3. Bxd3# - Your bishop captures the hanging pawn and checkmate. Opponent's king can not move to other squares due to the attack from your knight. This is how you can mate in two moves
4. For right move - You have over loaded the opponent's rook and won the game. It was a good decision
5. For wrong move - You could have over loaded the opponent's rook and won the game. Try again

Categories of medium chess puzzle 0068

This medium chess puzzle falls in these categories.

1. [Medium chess puzzles](#)
2. [Sacrifice puzzles in chess](#)
3. [Mate in 2 puzzles in chess](#)
4. [Endgame puzzles in chess](#)
5. [Decoy puzzles in chess](#)
6. [Strategy puzzles in chess](#)
7. [Rook puzzles in chess](#)
8. [Bishop puzzles in chess](#)

How to view the solution to medium chess puzzle 0068

To view the [solution to this puzzle](#), follow the steps given below

1. Go to the [puzzle page](#)
2. Click the solution button (Key as shown [below](#)) to view the solution



Figure 7: Click the solution button to view solutions @ <https://gbud.in/gp74sv2>

How to get help for moves in the medium chess puzzle 0068

To get help or the possible next moves in the puzzle, , follow the steps given below

1. Go to the [puzzle page](#)
2. Click the help button (exclamation mark as shown [below](#)) to get help or suggestion on next possible [move](#)



Figure 8: Click the help button to get help on next move @ <https://gbud.in/gp74sv2>



Figure 9: Solve more medium puzzles @ <https://gbud.in/chsmdpz>



Figure 10: Solve other puzzles @ <https://gbud.in/chsgppz>

Play chess for free

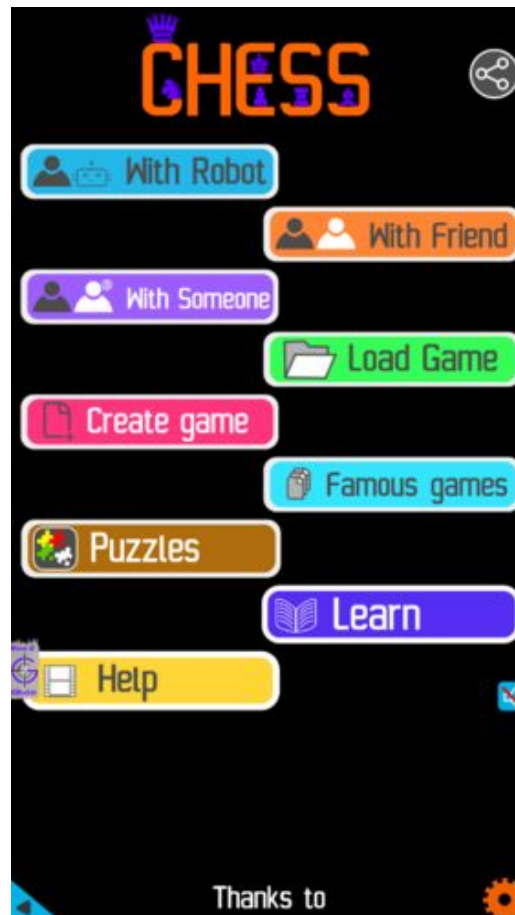


Figure 11: Play chess online for free. Solve puzzles and play with friends

Play chess for free at <https://gbud.in/chs>

We present you a platform to play chess online with friends for free. No need to install any app. You can play chess for free without registration or login.

Simple. You can do several chess related activities.

1. [solve chess puzzles](#)
2. [learn about chess](#)
3. [play chess with computer](#)
4. [play chess with friend](#)
5. [create your own chess games](#)

6. [fen viewer](#)
7. [fen editor](#)
8. [fen generator](#)
9. [pgn viewer](#)
10. [chess board editor](#)
11. [view famous chess games.](#)



Figure 12: Solve this puzzle online by scanning this QR code or go to the link below

<https://gbud.in/gp74sv2>

Read the latest article on Medium Chess puzzle # 0068 - Mate in 2 moves by scanning this QR code or click the link

Previous article : [« Medium Chess puzzle # 0067 - Mate in 3 moves](#)

Next article : [Medium chess puzzles »](#)

[Back to top](#)

[Contact Us](#)