



Medium Chess Puzzle # 0063

By

G Bud Games
<https://gbud.in>

November 6, 2021

Contents

Medium Chess puzzle # 0063 - Draw the game in two moves	4
Medium chess puzzle 0063	4
Solution to medium chess puzzle 0063	5
Solution 1	5
Right moves for the solution to the medium chess puzzle 0063	7
Explanation for the moves	7
Categories of medium chess puzzle 0063	8
How to view the solution to medium chess puzzle 0063	8
How to get help for moves in the medium chess puzzle 0063	9
Play chess for free	10

List of Figures

1	Solve this medium chess puzzle 0063. Draw the game in two moves @ https://gbud.in/gzvw9z2	4
2	Solve this medium chess puzzle online with solution @ https://gbud.in/gzvw9z2	4
3	Initial board position of medium chess puzzle 0063	5
4	Qe8+ - If you miss one move your opponent will checkmate. The only way to avoid losing this game is to sacrifice your pieces so that you can end in a stalemate. This is the first suicide sacrifice.	6
5	Rxe8 - This is a zugzwang move. The opponent has to capture your queen to escape from the check threat	6
6	Rxe8+ - Since the queen and rook were in battery formation, the rook sacrifice itself with a check. Your opponent will now capture your rook as that is the only legal move available. With that capture the game will end in a draw as it is a stalemate. This is how you can draw the game in two moves	7
7	Click the solution button to view solutions @ https://gbud.in/gzvw9z2	8
8	Click the help button to get help on next move @ https://gbud.in/gzvw9z2	9
9	Solve more medium puzzles @ https://gbud.in/chsmdpz	9
10	Solve other puzzles @ https://gbud.in/chsgppz	9
11	Play chess online for free. Solve puzzles and play with friends 10	

12 Solve this puzzle online by scanning this QR code or go to
the link below 11

Medium Chess puzzle # 0063 - Draw the game in two moves

Solve this medium chess puzzle and improve your chess games through improvement of your chess strategies and chess tactics.

Puzzle No : 0063

Difficulty level : medium

Description : Draw the game in two moves

Next Move : White

Player level : Intermediate

Short URL for puzzle : <https://gbud.in/gzww9z2>

Medium chess puzzle 0063

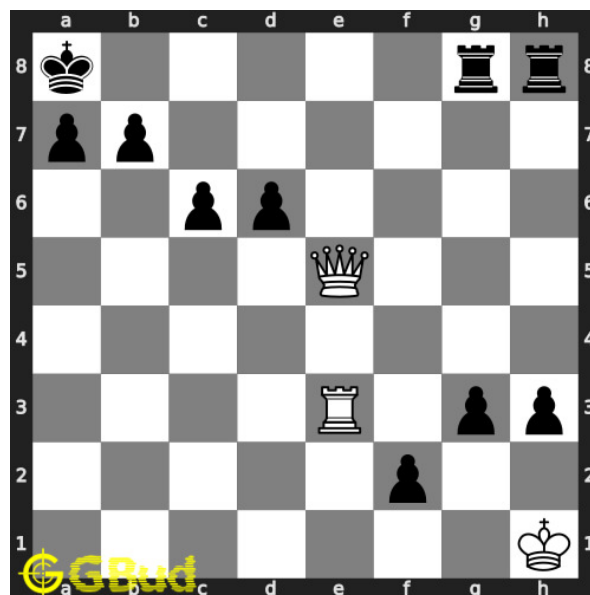


Figure 1: Solve this medium chess puzzle 0063. Draw the game in two moves @ <https://gbud.in/gzww9z2>



Figure 2: Solve this medium chess puzzle online with solution @ <https://gbud.in/gzww9z2>

Solution to medium chess puzzle 0063

At this puzzle, next **move** is by **White**. The objective of the puzzle is to draw the game in two moves.

See the interactive solution at the [puzzle page](#)

Solution 1

Initial board position This is the initial board position of medium chess puzzle 0063.

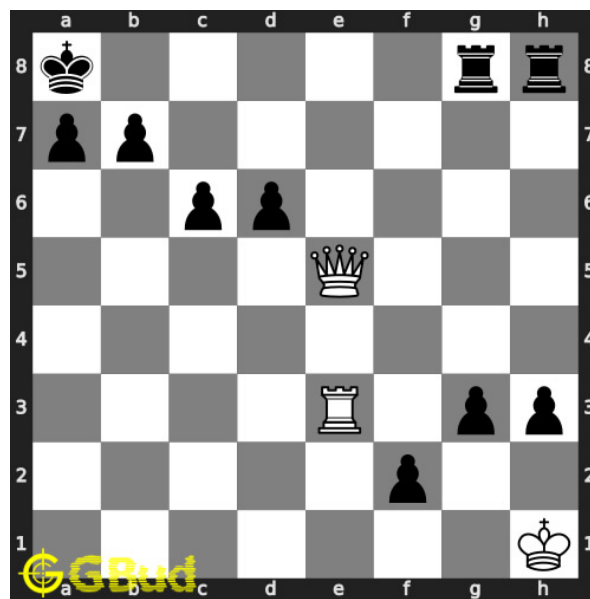


Figure 3: Initial board position of medium chess puzzle 0063

Move 1 Move by white

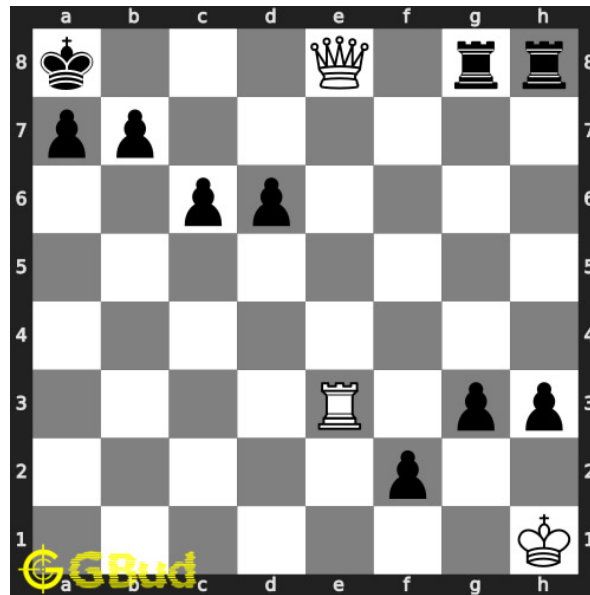


Figure 4: Qe8+ - If you miss one move your opponent will checkmate. The only way to avoid losing this game is to sacrifice your pieces so that you can end in a stalemate. This is the first suicide sacrifice.

Move 2 Move by black

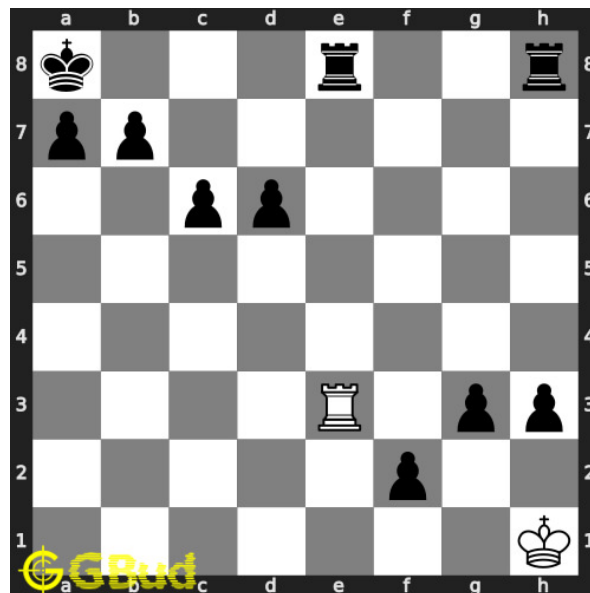


Figure 5: Rxe8 - This is a zugzwang move. The opponent has to capture your queen to escape from the check threat

Move 3 Move by white

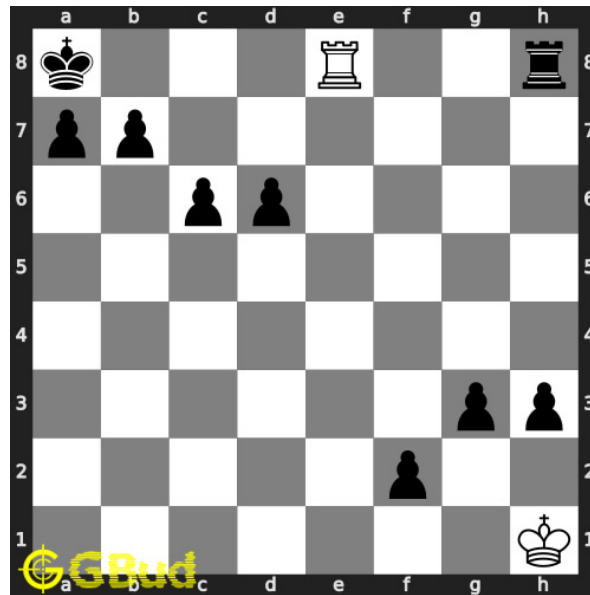


Figure 6: Rxe8+ - Since the queen and rook were in battery formation, the rook sacrifice itself with a check. Your opponent will now capture your rook as that is the only legal move available. With that capture the game will end in a draw as it is a stalemate. This is how you can draw the game in two moves

Right moves for the solution to the medium chess puzzle 0063

Based on the objective of the puzzle, you have to make the right moves. Following are the right moves

1. Qe8+, Rxe8+

Explanation for the moves

1. Qe8+ - If you miss one move your opponent will checkmate. The only way to avoid losing this game is to sacrifice your pieces so that you can end in a stalemate. This is the first suicide sacrifice.
2. Rxe8+ - Since the queen and rook were in battery formation, the rook sacrifice itself with a check. Your opponent will now capture your rook as that is the only legal move available. With that capture the game will end in a draw as it is a stalemate. This is how you can draw the game in two moves
3. Rxe8 - This is a zugzwang move. The opponent has to capture your queen to escape from the check threat
4. For right move - YOU have avoided losing the game with the sacrifice of your rook and queen. You played it nicely

5. For wrong move - You could have sacrificed your queen and rook to end the game in a draw. Try again

Categories of medium chess puzzle 0063

This medium chess puzzle falls in these categories.

1. [Medium chess puzzles](#)
2. [Sacrifice puzzles in chess](#)
3. [Avoid checkmate puzzles in chess](#)
4. [Battery puzzles in chess](#)
5. [Strategy puzzles in chess](#)

How to view the solution to medium chess puzzle 0063

To view the [solution to this puzzle](#), follow the steps given below

1. Go to the [puzzle page](#)
2. Click the solution button (Key as shown [below](#)) to view the solution



Figure 7: Click the solution button to view solutions @ <https://gbud.in/gzww9z2>

How to get help for moves in the medium chess puzzle 0063

To get help or the possible next moves in the puzzle, , follow the steps given below

1. Go to the [puzzle page](#)
2. Click the help button (exclamation mark as shown [below](#)) to get help or suggestion on next possible [move](#)



Figure 8: Click the help button to get help on next move @ <https://gbud.in/gzww9z2>



Figure 9: Solve more medium puzzles @ <https://gbud.in/chsmdpz>



Figure 10: Solve other puzzles @ <https://gbud.in/chsgppz>

Play chess for free

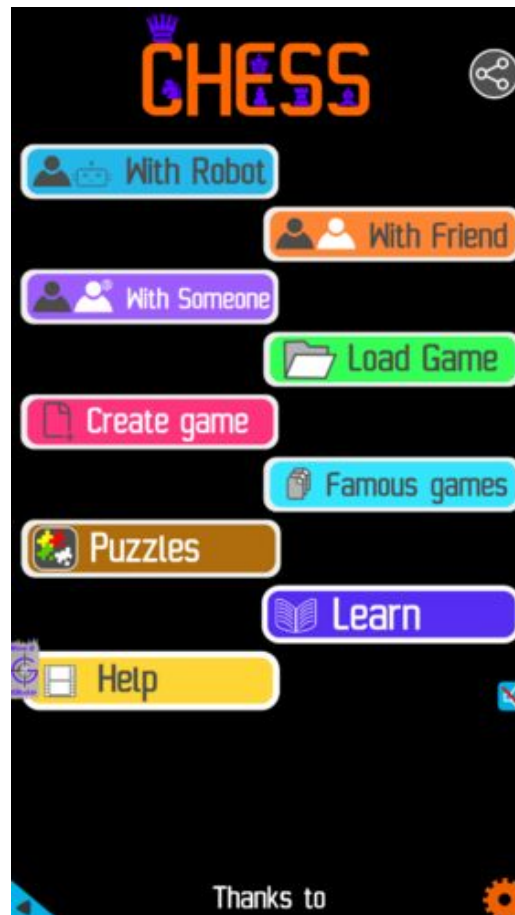


Figure 11: Play chess online for free. Solve puzzles and play with friends

Play chess for free at <https://gbud.in/chs>

We present you a platform to play chess online with friends for free. No need to install any app. You can play chess for free without registration or login.

Simple. You can do several chess related activities.

1. [solve chess puzzles](#)
2. [learn about chess](#)
3. [play chess with computer](#)
4. [play chess with friend](#)
5. [create your own chess games](#)

6. [fen viewer](#)
7. [fen editor](#)
8. [fen generator](#)
9. [pgn viewer](#)
10. [chess board editor](#)
11. [view famous chess games.](#)



Figure 12: Solve this puzzle online by scanning this QR code or go to the link below

<https://gbud.in/gzww9z2>

Read the latest article on Medium Chess puzzle # 0063 - Draw the game in two moves by scanning this QR code or click the link

Previous article : « [Medium Chess puzzle # 0062 - Mate in 3 moves](#)

Next article : [Medium Chess puzzle # 0064 - Mate in 2 moves](#) »

[Back to top](#)

[Contact Us](#)