



Medium Chess Puzzle # 0060

By

G Bud Games
<https://gbud.in>

November 2, 2021

Contents

1	Medium Chess puzzle # 0060 - Save your queen	4
1.1	Medium chess puzzle 0060	5
1.2	Solution to medium chess puzzle 0060	5
1.2.1	Solution 1	6
1.2.2	Solution 2	8
1.2.3	Right moves for the solution to the medium chess puzzle 0060	11
1.2.4	Explanation for the moves	11
1.3	Categories of medium chess puzzle 0060	12
1.4	How to view the solution to medium chess puzzle 0060	12
1.5	How to get help for moves in the medium chess puzzle 0060	13
1.6	Play chess for free	15

List of Figures

1.1	Solve this medium chess puzzle 0060. Save your queen @ https://gbud.in/gdd7yq2	5
1.2	Solve this medium chess puzzle online with solution @ https://gbud.in/gdd7yq2	5
1.3	Initial board position of medium chess puzzle 0060	6
1.4	Rd8 - Opponent's rook pinned your queen to your king. You can not move your queen out of d file as it will expose your king to a check	7
1.5	b8=Q - The only way to force the opponent's rook to move out of d file is to promote your pawn. Here your pawn is promoted to a queen and pin opponent's rook to their king. Now the opponent's rook can not move out of eighth rank. The only way is to capture this promoted queen. This is how you can save your queen which was pinned	8
1.6	Initial board position of medium chess puzzle 0060	9
1.7	Rd8 - Opponent's rook pinned your queen to your king. You can not move your queen out of d file as it will expose your king to a check	10
1.8	b8=R - The only way to force the opponent's rook to move out of d file is to promote your pawn. Here your pawn is promoted to a rook and pin opponent's rook to their king. Now the opponent's rook can not move out of eighth rank. The only way is to capture this promoted rook. This is how you can save your queen which was pinned	11
1.9	Click the solution button to view solutions @ https://gbud.in/gdd7yq2	13
1.10	Click the help button to get help on next move @ https://gbud.in/gdd7yq2	14
1.11	Solve more medium puzzles @ https://gbud.in/chsmdpz	14
1.12	Solve other puzzles @ https://gbud.in/chsgppz	14
1.13	Play chess online for free. Solve puzzles and play with friends	15

1.14 Solve this puzzle online by scanning this QR code or go to
the link below 16

Chapter 1

Medium Chess puzzle # 0060 - Save your queen

Solve this medium chess puzzle and improve your chess games through improvement of your chess strategies and chess tactics.

Puzzle No : 0060

Difficulty level : medium

Description : Save your queen

Next Move : White

Player level : Intermediate

Short URL for puzzle : <https://gbud.in/gdd7yq2>

1.1 Medium chess puzzle 0060

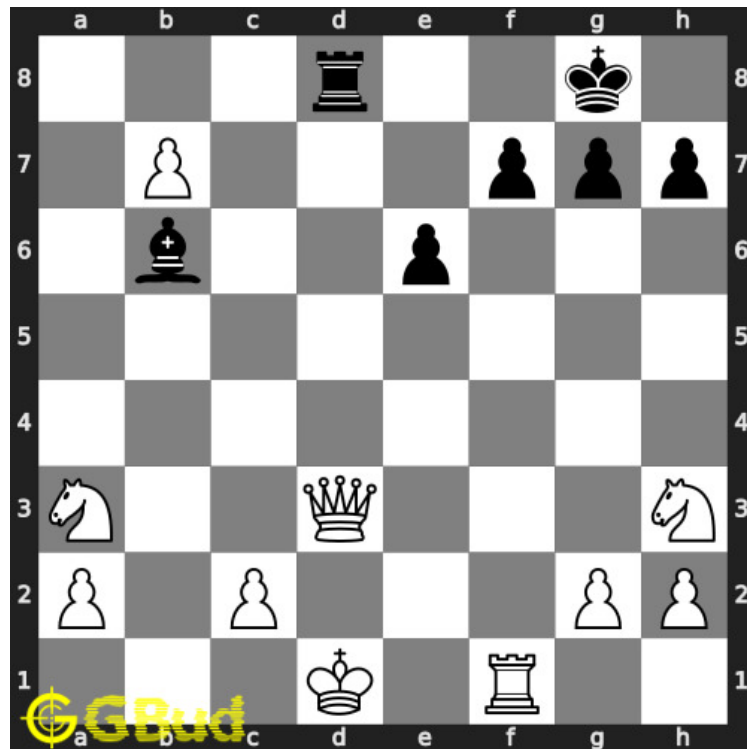


Figure 1.1: Solve this medium chess puzzle 0060. Save your queen @ <https://gbud.in/gdd7yq2>



Figure 1.2: Solve this medium chess puzzle online with solution @ <https://gbud.in/gdd7yq2>

1.2 Solution to medium chess puzzle 0060

At this puzzle, next **move** is by **White**. The objective of the puzzle is to save your queen.

See the interactive solution at the [puzzle page](#)

1.2.1 Solution 1

1.2.1.1 Initial board position

This is the initial board position of medium chess puzzle 0060.

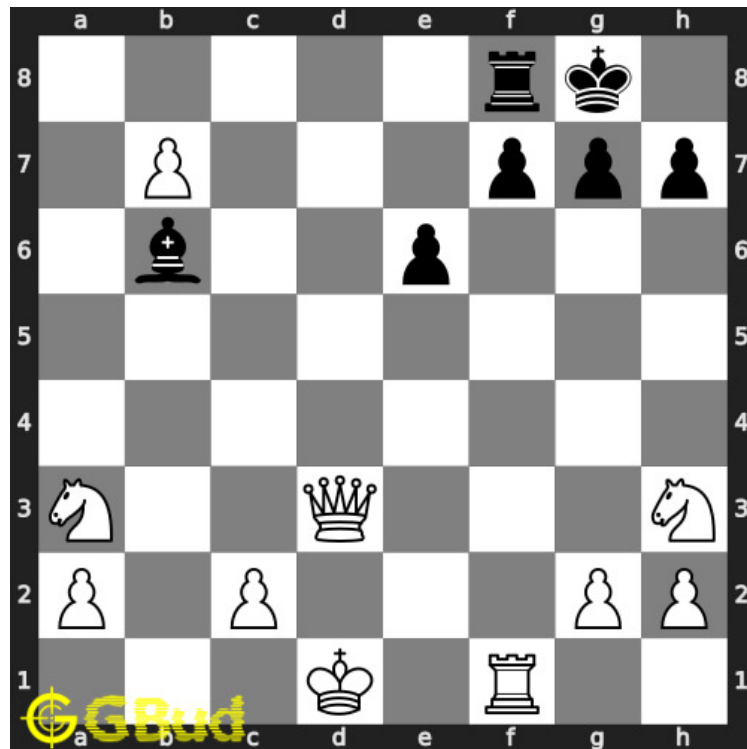


Figure 1.3: Initial board position of medium chess puzzle 0060

1.2.1.2 Move 1

Move by black

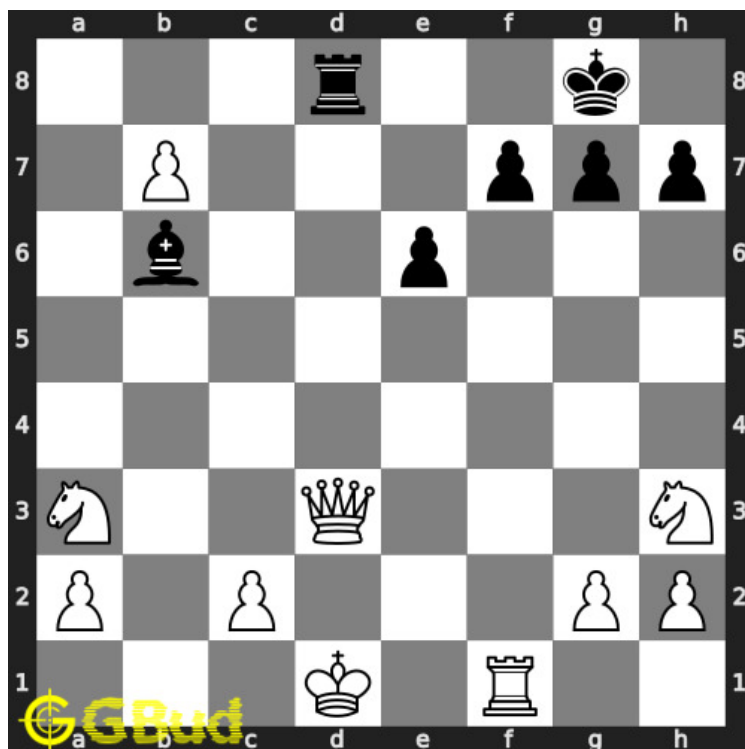


Figure 1.4: Rd8 - Opponent's rook pinned your queen to your king. You can not move your queen out of d file as it will expose your king to a check

1.2.1.3 Move 2

Move by white

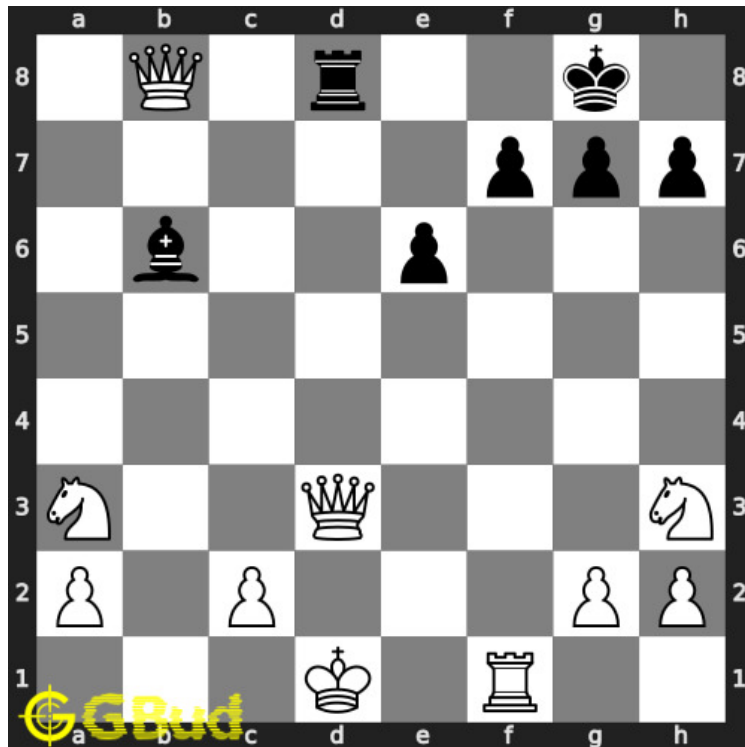


Figure 1.5: b8=Q - The only way to force the opponent's rook to move out of d file is to promote your pawn. Here your pawn is promoted to a queen and pin opponent's rook to their king. Now the opponent's rook can not move out of eighth rank. The only way is to capture this promoted queen. This is how you can save your queen which was pinned

1.2.2 Solution 2

1.2.2.1 Initial board position

This is the initial board position of medium chess puzzle 0060.

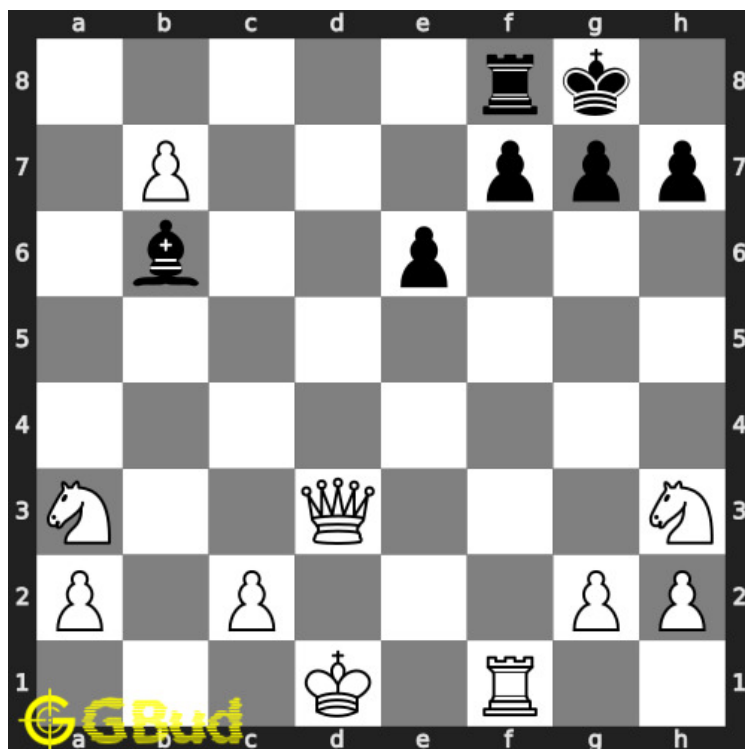


Figure 1.6: Initial board position of medium chess puzzle 0060

1.2.2.2 Move 1

Move by black

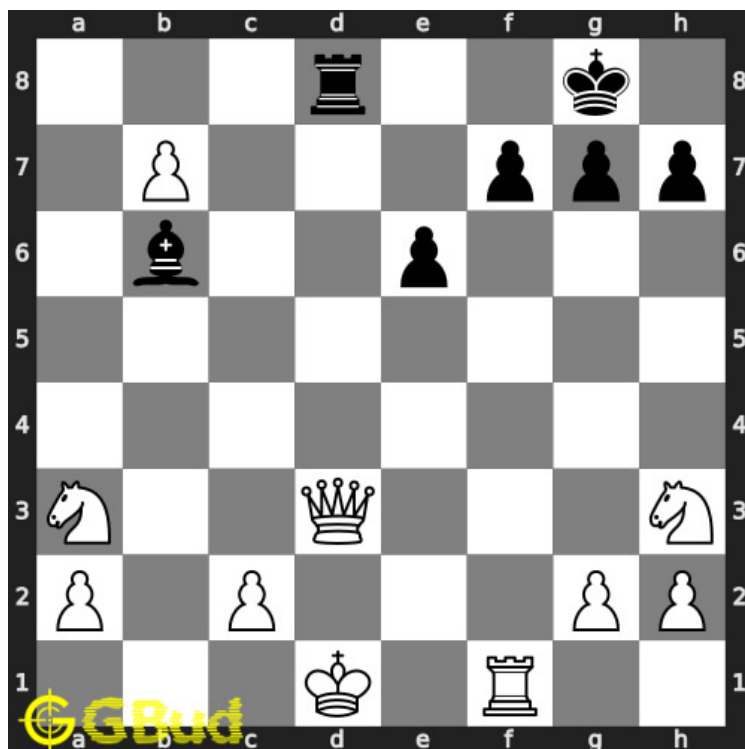


Figure 1.7: Rd8 - Opponent's rook pinned your queen to your king. You can not move your queen out of d file as it will expose your king to a check

1.2.2.3 Move 2

Move by white

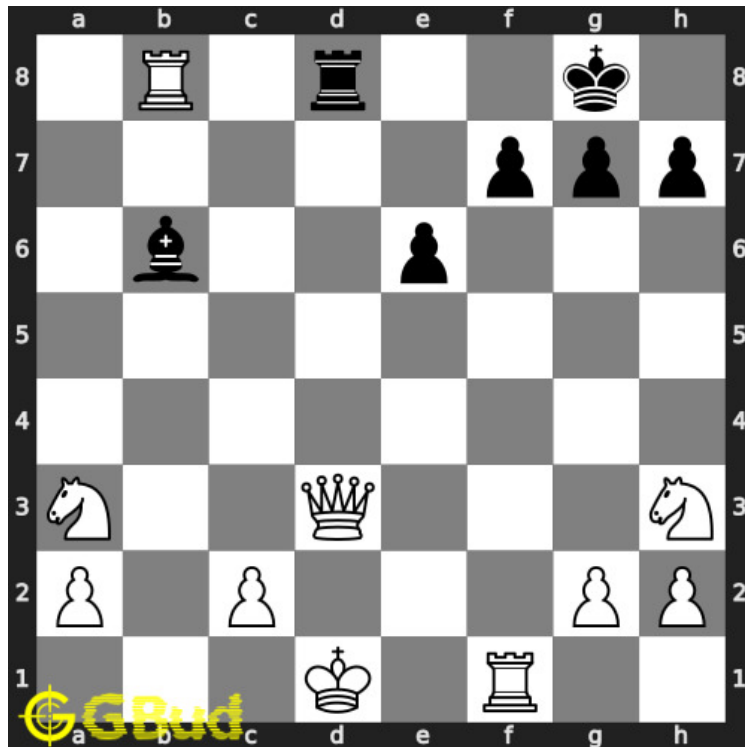


Figure 1.8: b8=R - The only way to force the opponent's rook to move out of d file is to promote your pawn. Here your pawn is promoted to a rook and pin opponent's rook to their king. Now the opponent's rook can not move out of eighth rank. The only way is to capture this promoted rook. This is how you can save your queen which was pinned

1.2.3 Right moves for the solution to the medium chess puzzle 0060

Based on the objective of the puzzle, you have to make the right moves. Following are the right moves

1. b8=Q
2. b8=R

1.2.4 Explanation for the moves

1. Rd8 - Opponent's rook pinned your queen to your king. You can not move your queen out of d file as it will expose your king to a check
2. b8=Q - The only way to force the opponent's rook to move out of d file is to promote your pawn. Here your pawn is promoted to a queen and pin opponent's rook to their king. Now the opponent's rook can not move out of eighth rank. The only way is to capture

this promoted queen. This is how you can save your queen which was pinned

3. b8=R - The only way to force the opponent's rook to move out of d file is to promote your pawn. Here your pawn is promoted to a rook and pin opponent's rook to their king. Now the opponent's rook can not move out of eighth rank. The only way is to capture this promoted rook. This is how you can save your queen which was pinned
4. For right move - You know how to unpin your queen. You have cracked it nicely
5. For wrong move - You could have promoted your pawn and sacrificed it to save your queen. Try again

1.3 Categories of medium chess puzzle 0060

This medium chess puzzle falls in these categories.

1. [Medium chess puzzles](#)
2. [Sacrifice puzzles in chess](#)
3. [Promotion puzzles in chess](#)
4. [Strategy puzzles in chess](#)
5. [Pin puzzles in chess](#)
6. [Pawn puzzles in chess](#)
7. [Queen puzzles in chess](#)
8. [Save puzzles in chess](#)

1.4 How to view the solution to medium chess puzzle 0060

To view the [solution to this puzzle](#), follow the steps given below

1. Go to the [puzzle page](#)
2. Click the solution button (Key as shown [below](#)) to view the solution



Figure 1.9: Click the solution button to view solutions @ <https://gbud.in/gdd7yq2>

1.5 How to get help for moves in the medium chess puzzle 0060

To get help or the possible next moves in the puzzle, , follow the steps given below

1. Go to the [puzzle page](#)
2. Click the help button (exclamation mark as shown [below](#)) to get help or suggestion on next possible [move](#)



Figure 1.10: Click the help button to get help on next move @ <https://gbud.in/gdd7yq2>



Figure 1.11: Solve more medium puzzles @ <https://gbud.in/chsmdpz>



Figure 1.12: Solve other puzzles @ <https://gbud.in/chsgppz>

1.6 Play chess for free



Figure 1.13: Play chess online for free. Solve puzzles and play with friends

Play chess for free at <https://gbud.in/chs>

We present you a platform to [play chess online with friends for free](#). No need to install any app. You can [play chess for free without registration or login](#).

Simple. You can do several chess related activities.

1. [solve chess puzzles](#)
2. [learn about chess](#)
3. [play chess with computer](#)
4. [play chess with friend](#)
5. [create your own chess games](#)
6. [fen viewer](#)
7. [fen editor](#)
8. [fen generator](#)
9. [pgn viewer](#)
10. [chess board editor](#)
11. [view famous chess games](#).



Figure 1.14: Solve this puzzle online by scanning this QR code or go to the link below

<https://gbud.in/gdd7yq2>

Read the latest article on Medium Chess puzzle # 0060 - Save your queen by scanning this QR code or click the link

Previous article : « [Medium Chess puzzle # 0059 - Mate in 2 moves](#)

Next article : [Medium chess puzzles](#) »

[Back to top](#)

[Contact Us](#)

© GBud Games 2021