



## Medium Chess Puzzle # 0058

By

G Bud Games  
<https://gbud.in>

October 30, 2021

## Contents

<b>Medium Chess puzzle # 0058 - Mate in 2 moves</b>	<b>3</b>
Medium chess puzzle 0058 . . . . .	3
Solution to medium chess puzzle 0058 . . . . .	4
Solution 1 . . . . .	4
Right moves for the solution to the medium chess puzzle 0058	6
Explanation for the moves . . . . .	6
Categories of medium chess puzzle 0058 . . . . .	6
How to view the solution to medium chess puzzle 0058 . . . . .	7
How to get help for moves in the medium chess puzzle 0058 . . . . .	7
Play chess for free . . . . .	9

## List of Figures

1	<a href="https://gbud.in/gv5fcb2">Solve this medium chess puzzle 0058. Mate in 2 moves @ https://gbud.in/gv5fcb2</a> . . . . .	3
2	<a href="https://gbud.in/gv5fcb2">Solve this medium chess puzzle online with solution @ https://gbud.in/gv5fcb2</a> . . . . .	3
3	<a href="#">Initial board position of medium chess puzzle 0058</a> . . . . .	4
4	<a href="#">Rh7+ - You need to remove the opponent's rook which will break your attack on their king. This move of the rook is to sacrifice itself which will attract the opponent's rook to h7.</a> . . . . .	5
5	<a href="#">Rxxh7 - This is the only legal move available. The king can not move to g8 due to the attack from the knight</a> . . . . .	5
6	<a href="#">Qxxh7# - Queen captures the rook and checkmate. This is how you can mate in 2 moves</a> . . . . .	6
7	<a href="https://gbud.in/gv5fcb2">Click the solution button to view solutions @ https://gbud.in/gv5fcb2</a> . . . . .	7
8	<a href="https://gbud.in/gv5fcb2">Click the help button to get help on next move @ https://gbud.in/gv5fcb2</a> . . . . .	8
9	<a href="https://gbud.in/chsmdpz">Solve more medium puzzles @ https://gbud.in/chsmdpz</a> . . . . .	8
10	<a href="https://gbud.in/chsgppz">Solve other puzzles @ https://gbud.in/chsgppz</a> . . . . .	8
11	<a href="#">Play chess online for free. Solve puzzles and play with friends</a> . . . . .	9
12	<a href="#">Solve this puzzle online by scanning this QR code or go to the link below</a> . . . . .	10

## Medium Chess puzzle # 0058 - Mate in 2 moves

Solve this medium chess puzzle and improve your chess games through improvement of your chess strategies and chess tactics.

Puzzle No : 0058

Difficulty level : medium

Description : Mate in 2 moves

Next Move : White

Player level : Intermediate

Short URL for puzzle : <https://gbud.in/gv5fcb2>

### Medium chess puzzle 0058

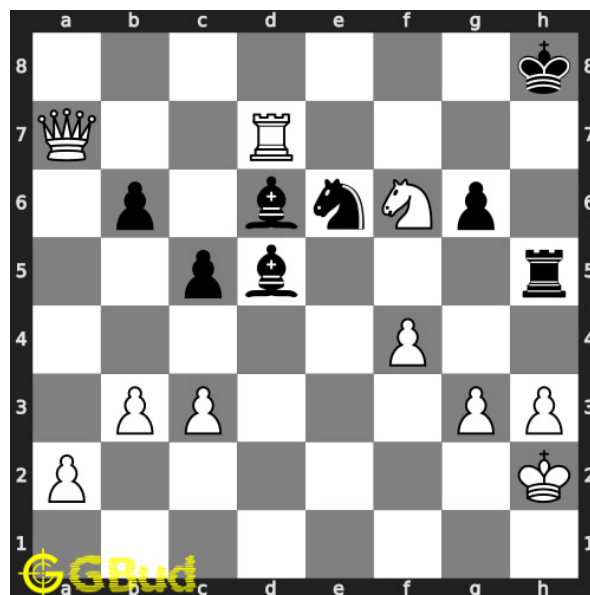


Figure 1: Solve this medium chess puzzle 0058. Mate in 2 moves @ <https://gbud.in/gv5fcb2>



Figure 2: Solve this medium chess puzzle online with solution @ <https://gbud.in/gv5fcb2>

## Solution to medium chess puzzle 0058

At this puzzle, next **move** is by **White**. The objective of the puzzle is to mate in 2 moves.

See the interactive solution at the [puzzle page](#)

### Solution 1

**Initial board position** This is the initial board position of medium chess puzzle 0058.

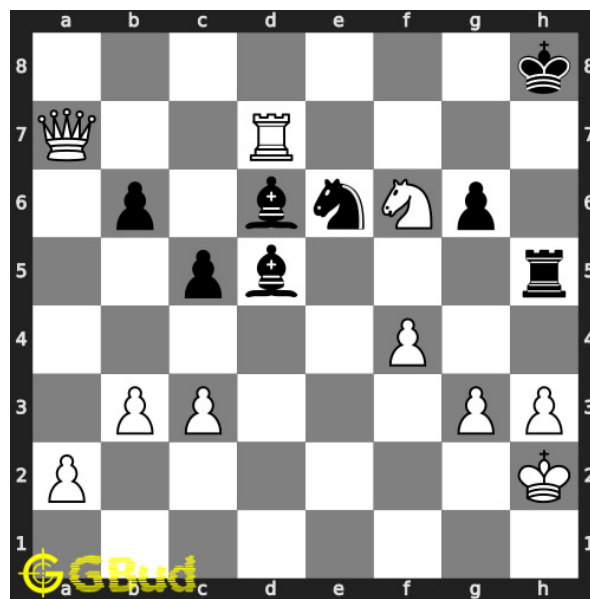


Figure 3: Initial board position of medium chess puzzle 0058

**Move 1** Move by white

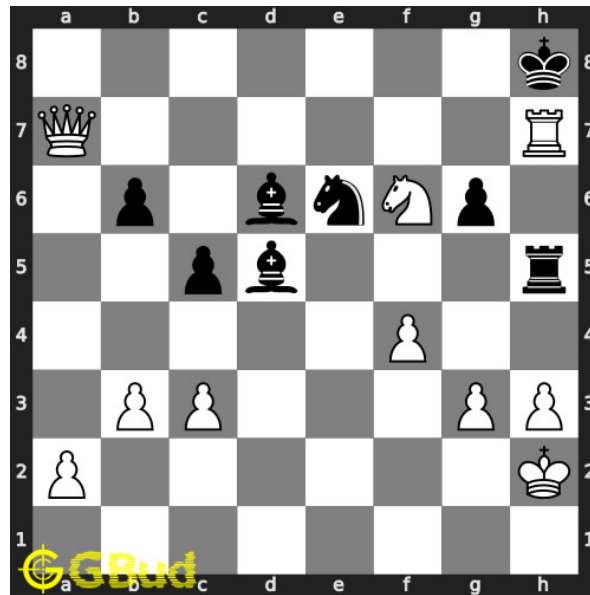


Figure 4: Rh7+ - You need to remove the opponent's rook which will break your attack on their king. This move of the rook is to sacrifice itself which will attract the opponent's rook to h7.

**Move 2** Move by black

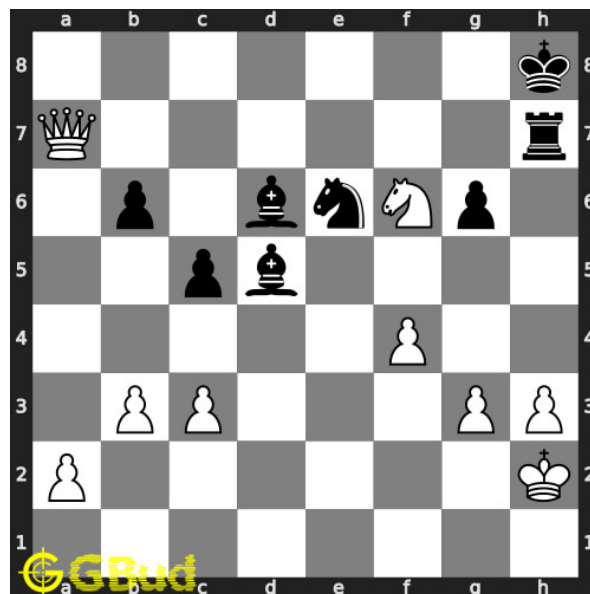


Figure 5: Rxh7 - This is the only legal move available. The king can not move to g8 due to the attack from the knight

**Move 3** Move by white

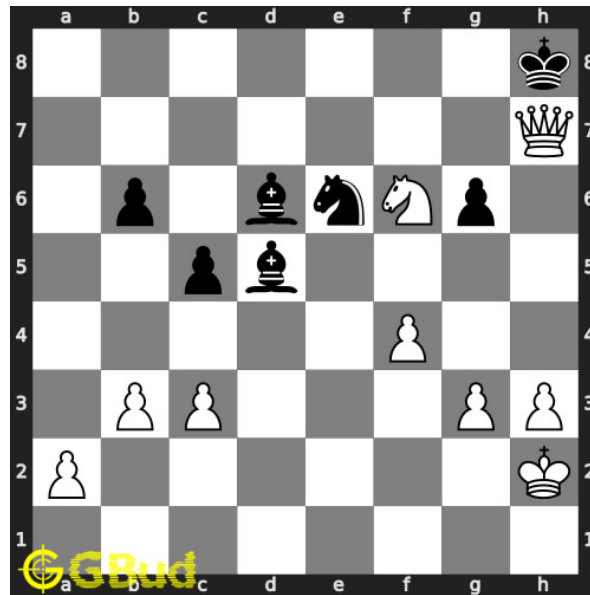


Figure 6:  $Qxh7\#$  - Queen captures the rook and checkmate. This is how you can mate in 2 moves

## Right moves for the solution to the medium chess puzzle 0058

Based on the objective of the puzzle, you have to make the right moves. Following are the right moves

1.  $Rh7+$ ,  $Qxh7\#$

## Explanation for the moves

1.  $Rh7+$  - You need to remove the opponent's rook which will break your attack on their king. This move of the rook is to sacrifice itself which will attract the opponent's rook to h7.
2.  $Qxh7\#$  - Queen captures the rook and checkmate. This is how you can mate in 2 moves
3.  $Rxh7$  - This is the only legal move available. The king can not move to g8 due to the attack from the knight
4. For right move - You have sacrificed your rook and had a checkmate that is similar to arabian mate. That's the way to do it.
5. For wrong move - You could have sacrificed your rook followed by a checkmate. Try again

## Categories of medium chess puzzle 0058

This medium chess puzzle falls in these categories.

1. [Medium chess puzzles](#)
2. [Sacrifice puzzles in chess](#)
3. [Mate in 2 puzzles in chess](#)
4. [Endgame puzzles in chess](#)
5. [Fork puzzles in chess](#)
6. [Strategy puzzles in chess](#)
7. [Mate pattern puzzles in chess](#)

## How to view the solution to medium chess puzzle 0058

To view the [solution to this puzzle](#), follow the steps given below

1. Go to the [puzzle page](#)
2. Click the solution button (Key as shown [below](#)) to view the solution



Figure 7: Click the solution button to view solutions @ <https://gbud.in/gv5fcb2>

## How to get help for moves in the medium chess puzzle 0058

To get help or the possible next moves in the puzzle, , follow the steps given below

1. Go to the [puzzle page](#)
2. Click the help button (exclamation mark as shown [below](#)) to get help or suggestion on next possible [move](#)



Figure 8: Click the help button to get help on next move @ <https://gbud.in/gv5fcb2>



Figure 9: Solve more medium puzzles @ <https://gbud.in/chsmdpz>



Figure 10: Solve other puzzles @ <https://gbud.in/chsgppz>



## Play chess for free

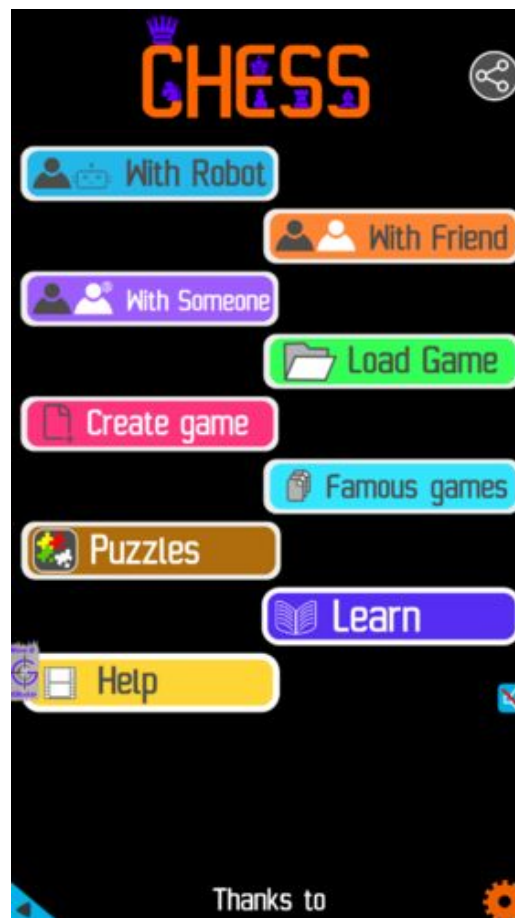


Figure 11: Play chess online for free. Solve puzzles and play with friends

Play chess for free at <https://gbud.in/chs>

We present you a platform to play chess online with friends for free. No need to install any app. You can play chess for free without registration or login.

Simple. You can do several chess related activities.

1. [solve chess puzzles](#)
2. [learn about chess](#)
3. [play chess with computer](#)
4. [play chess with friend](#)
5. [create your own chess games](#)
6. [fen viewer](#)
7. [fen editor](#)
8. [fen generator](#)
9. [pgn viewer](#)
10. [chess board editor](#)

11. [view famous chess games.](#)



Figure 12: Solve this puzzle online by scanning this QR code or go to the link below

<https://gbud.in/gv5fcb2>

Read the latest article on Medium Chess puzzle # 0058 - Mate in 2 moves by scanning this QR code or click the link

Previous article : [« Medium Chess puzzle # 0057 - Mate in 2 moves](#)

Next article : [Medium chess puzzles »](#)

[Back to top](#)

[Contact Us](#)

© GBud Games 2021