



## Medium Chess Puzzle # 0055

By

G Bud Games  
<https://gbud.in>

October 27, 2021

## Contents

<b>Medium Chess puzzle # 0055 - Gain rook</b>	<b>3</b>
Medium chess puzzle 0055 . . . . .	3
Solution to medium chess puzzle 0055 . . . . .	4
Solution 1 . . . . .	4
Right moves for the solution to the medium chess puzzle 0055	6
Explanation for the moves . . . . .	6
Categories of medium chess puzzle 0055 . . . . .	6
How to view the solution to medium chess puzzle 0055 . . . . .	7
How to get help for moves in the medium chess puzzle 0055 . . . . .	7
Play chess for free . . . . .	9

## List of Figures

1	Solve this medium chess puzzle 0055. Gain rook @ <a href="https://gbud.in/gzknkl2">https://gbud.in/gzknkl2</a> . . . . .	3
2	Solve this medium chess puzzle online with solution @ <a href="https://gbud.in/gzknkl2">https://gbud.in/gzknkl2</a> . . . . .	3
3	Initial board position of medium chess puzzle 0055 . . . . .	4
4	Bf2 - This is a skewer attack as the bishop is having an x-ray attack on the hanging rook. The bishop can capture the hanging rook even if the queen moves . . . . .	5
5	Qc3 - Queen is forced to move. Queen can not capture the bishop as it is supported by the rook . . . . .	5
6	Bxb6 - Bishop captures the hanging rook. This is how you gain a rook by a skewer attack . . . . .	6
7	Click the solution button to view solutions @ <a href="https://gbud.in/gzknkl2">https://gbud.in/gzknkl2</a> . . . . .	7
8	Click the help button to get help on next move @ <a href="https://gbud.in/gzknkl2">https://gbud.in/gzknkl2</a> . . . . .	8
9	Solve more medium puzzles @ <a href="https://gbud.in/chsmdpz">https://gbud.in/chsmdpz</a> . . . . .	8
10	Solve other puzzles @ <a href="https://gbud.in/chsgppz">https://gbud.in/chsgppz</a> . . . . .	8
11	Play chess online for free. Solve puzzles and play with friends	9
12	Solve this puzzle online by scanning this QR code or go to the link below . . . . .	10

## Medium Chess puzzle # 0055 - Gain rook

Solve this medium chess puzzle and improve your chess games through improvement of your chess strategies and chess tactics.

Puzzle No : 0055

Difficulty level : medium

Description : Gain rook

Next Move : Black

Player level : Intermediate

Short URL for puzzle : <https://gbud.in/gzknkl2>

### Medium chess puzzle 0055

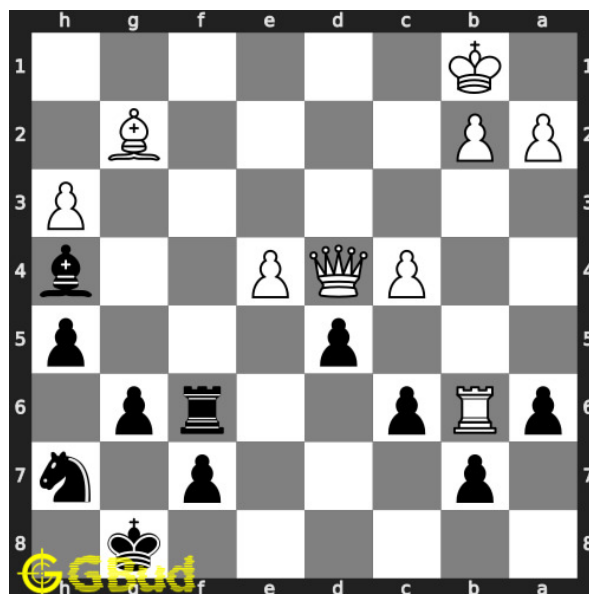


Figure 1: Solve this medium chess puzzle 0055. Gain rook @ <https://gbud.in/gzknkl2>



Figure 2: Solve this medium chess puzzle online with solution @ <https://gbud.in/gzknkl2>

## Solution to medium chess puzzle 0055

At this puzzle, next **move** is by **Black**. The objective of the puzzle is to gain rook.

See the interactive solution at the [puzzle page](#)

### Solution 1

**Initial board position** This is the initial board position of medium chess puzzle 0055.

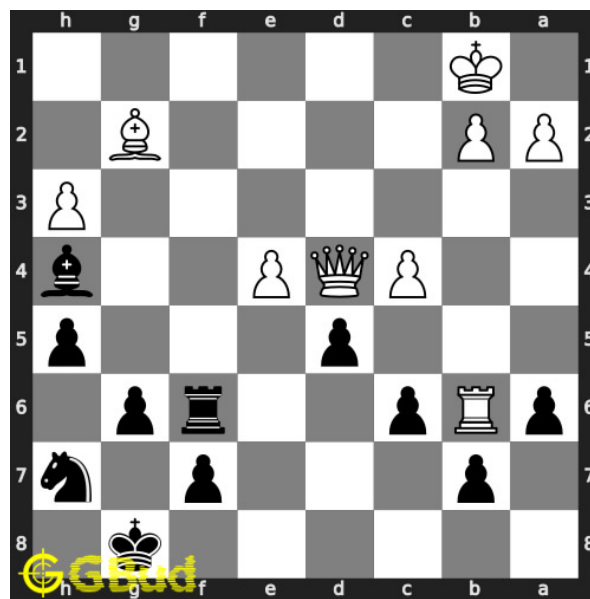


Figure 3: Initial board position of medium chess puzzle 0055

**Move 1** Move by black

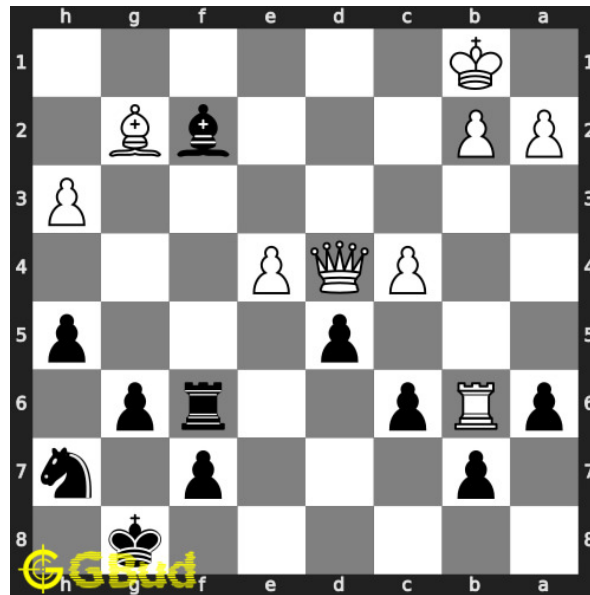


Figure 4: Bf2 - This is a skewer attack as the bishop is having an x-ray attack on the hanging rook. The bishop can capture the hanging rook even if the queen moves

**Move 2** Move by white

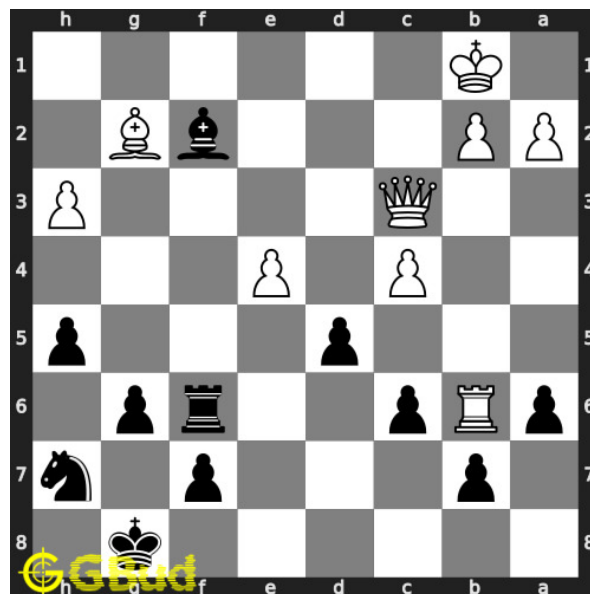


Figure 5: Qc3 - Queen is forced to move. Queen can not capture the bishop as it is supported by the rook

**Move 3** Move by black

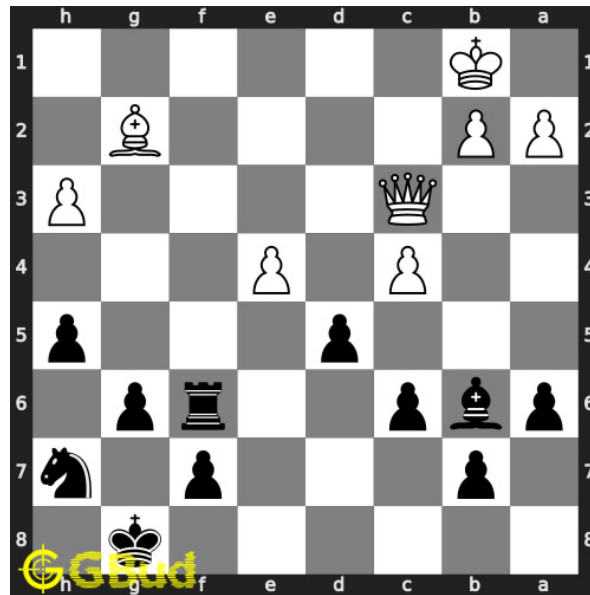


Figure 6: Bxb6 - Bishop captures the hanging rook. This is how you gain a rook by a skewer attack

### Right moves for the solution to the medium chess puzzle 0055

Based on the objective of the puzzle, you have to make the right moves. Following are the right moves

1. Bf2, Bxb6

### Explanation for the moves

1. Bf2 - This is a skewer attack as the bishop is having an x-ray attack on the hanging rook. The bishop can capture the hanging rook even if the queen moves
2. Bxb6 - Bishop captures the hanging rook. This is how you gain a rook by a skewer attack
3. Qc3 - Queen is forced to move. Queen can not capture the bishop as it is supported by the rook
4. For right move - You have gained the rook successfully through a skewer attack. Keep it up
5. For wrong move - You could have had a skewer attack and gained the rook. Try again

### Categories of medium chess puzzle 0055

This medium chess puzzle falls in these categories.

1. [Medium chess puzzles](#)
2. [Gain puzzles in chess](#)
3. [Strategy puzzles in chess](#)
4. [Skewer puzzles in chess](#)

## How to view the solution to medium chess puzzle 0055

To view the [solution to this puzzle](#), follow the steps given below

1. Go to the [puzzle page](#)
2. Click the solution button (Key as shown [below](#)) to view the solution



Figure 7: Click the solution button to view solutions @ <https://gbud.in/gzknkl2>

## How to get help for moves in the medium chess puzzle 0055

To get help or the possible next moves in the puzzle, , follow the steps given below

1. Go to the [puzzle page](#)
2. Click the help button (exclamation mark as shown [below](#)) to get help or suggestion on next possible [move](#)



Figure 8: Click the help button to get help on next move @ <https://gbud.in/gzknkl2>



Figure 9: Solve more medium puzzles @ <https://gbud.in/chsmdpz>



Figure 10: Solve other puzzles @ <https://gbud.in/chsgppz>



## Play chess for free

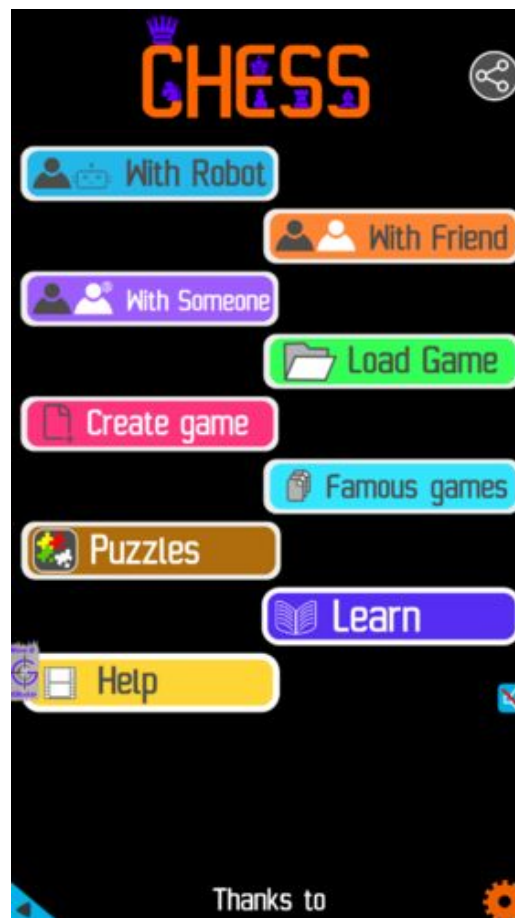


Figure 11: Play chess online for free. Solve puzzles and play with friends

Play chess for free at <https://gbud.in/chs>

We present you a platform to play chess online with friends for free. No need to install any app. You can play chess for free without registration or login.

Simple. You can do several chess related activities.

1. [solve chess puzzles](#)
2. [learn about chess](#)
3. [play chess with computer](#)
4. [play chess with friend](#)
5. [create your own chess games](#)
6. [fen viewer](#)
7. [fen editor](#)
8. [fen generator](#)
9. [pgn viewer](#)
10. [chess board editor](#)

11. [view famous chess games.](#)



Figure 12: Solve this puzzle online by scanning this QR code or go to the link below

<https://gbud.in/gzknkl2>

Read the latest article on Medium Chess puzzle # 0055 - Gain rook by scanning this QR code or click the link

Previous article : [« Medium Chess puzzle # 0054 - Mate in 2 moves](#)

Next article : [Medium chess puzzles »](#)

[Back to top](#)

[Contact Us](#)

© GBud Games 2021