



## Medium Chess Puzzle # 0050

By

G Bud Games  
<https://gbud.in>

October 22, 2021

## Contents

<b>Medium Chess puzzle # 0050 - Gain queen</b>	<b>3</b>
Medium chess puzzle 0050 . . . . .	3
Solution to medium chess puzzle 0050 . . . . .	4
Solution 1 . . . . .	4
Right moves for the solution to the medium chess puzzle 0050	6
Explanation for the moves . . . . .	6
Categories of medium chess puzzle 0050 . . . . .	6
How to view the solution to medium chess puzzle 0050 . . . . .	7
How to get help for moves in the medium chess puzzle 0050 . . . . .	7
Play chess for free . . . . .	9

## List of Figures

1	Solve this medium chess puzzle 0050. Gain queen @ <a href="https://gbud.in/gnp1d52">https://gbud.in/gnp1d52</a> . . . . .	3
2	Solve this medium chess puzzle online with solution @ <a href="https://gbud.in/gnp1d52">https://gbud.in/gnp1d52</a> . . . . .	3
3	Initial board position of medium chess puzzle 0050 . . . . .	4
4	d8=N+ - It is not necessary to always promote the pawn to a queen or rook. Even under-promotion to a knight will help. In this royal fork, the knight forks queen and the king	5
5	Kg8 - Opponent's king escapes from the check threat . . . . .	5
6	Nxc6 - Knight captures the hanging queen . . . . .	6
7	Click the solution button to view solutions @ <a href="https://gbud.in/gnp1d52">https://gbud.in/gnp1d52</a> . . . . .	7
8	Click the help button to get help on next move @ <a href="https://gbud.in/gnp1d52">https://gbud.in/gnp1d52</a> . . . . .	8
9	Solve more medium puzzles @ <a href="https://gbud.in/chsmdpz">https://gbud.in/chsmdpz</a> . . . . .	8
10	Solve other puzzles @ <a href="https://gbud.in/chsgppz">https://gbud.in/chsgppz</a> . . . . .	8
11	Play chess online for free. Solve puzzles and play with friends	9
12	Solve this puzzle online by scanning this QR code or go to the link below . . . . .	10

## Medium Chess puzzle # 0050 - Gain queen

Solve this medium chess puzzle and improve your chess games through improvement of your chess strategies and chess tactics.

Puzzle No : 0050

Difficulty level : medium

Description : Gain queen

Next Move : White

Player level : Intermediate

Short URL for puzzle : <https://gbud.in/gnp1d52>

### Medium chess puzzle 0050

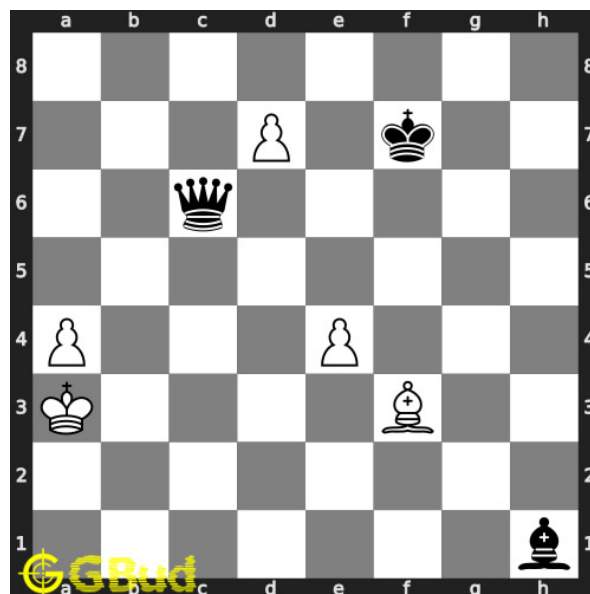


Figure 1: Solve this medium chess puzzle 0050. Gain queen @ <https://gbud.in/gnp1d52>



Figure 2: Solve this medium chess puzzle online with solution @ <https://gbud.in/gnp1d52>

## Solution to medium chess puzzle 0050

At this puzzle, next **move** is by **White**. The objective of the puzzle is to gain queen.

See the interactive solution at the [puzzle page](#)

### Solution 1

**Initial board position** This is the initial board position of medium chess puzzle 0050.

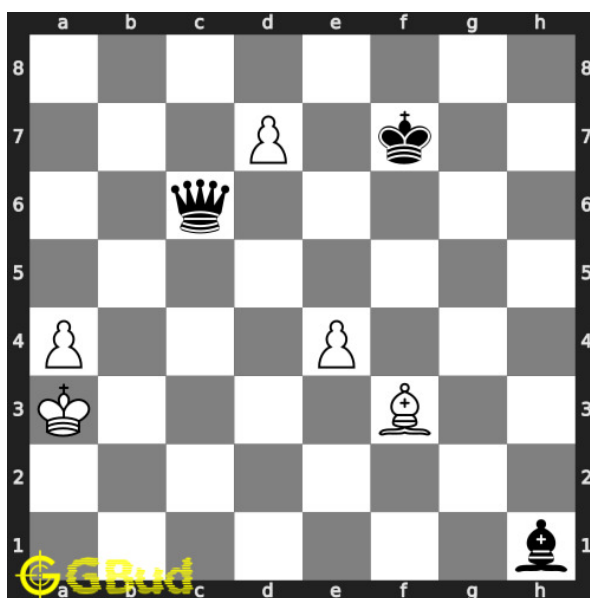


Figure 3: Initial board position of medium chess puzzle 0050

**Move 1** Move by white

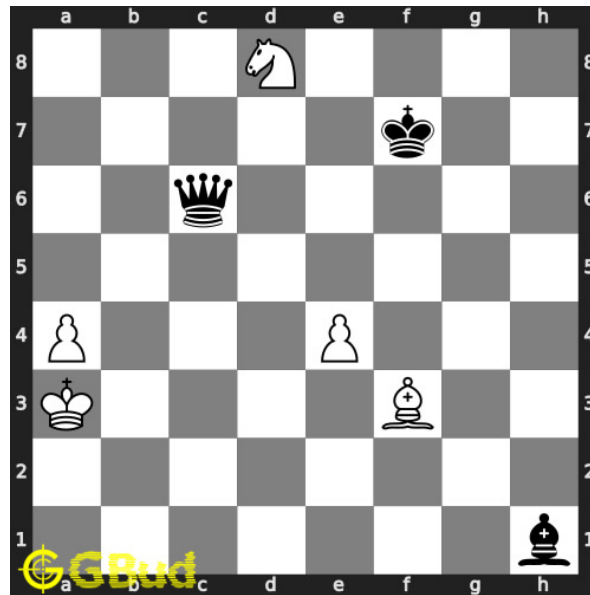


Figure 4:  $d8=N+$  - It is not necessary to always promote the pawn to a queen or rook. Even under-promotion to a knight will help. In this royal fork, the knight forks queen and the king

**Move 2** Move by black

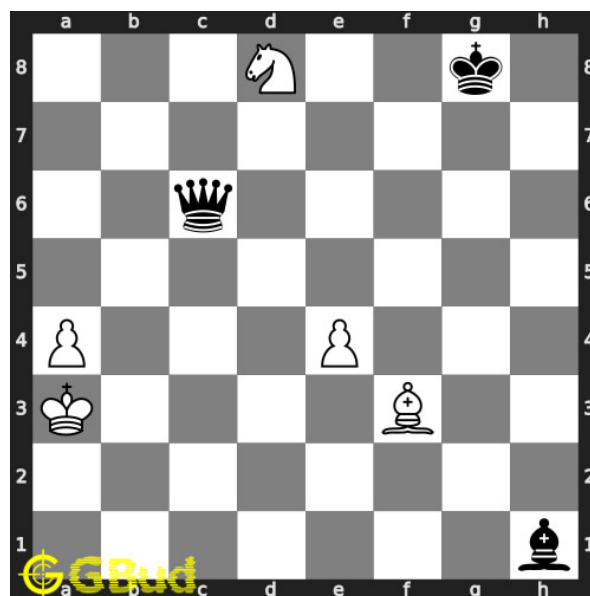


Figure 5:  $Kg8$  - Opponent's king escapes from the check threat

**Move 3** Move by white

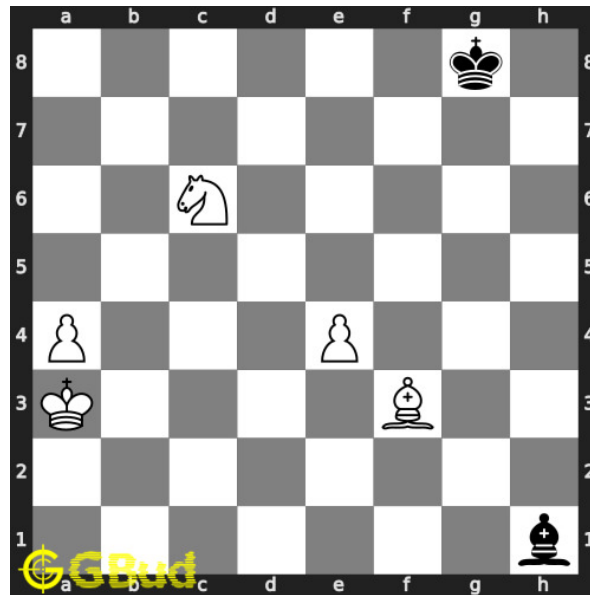


Figure 6: Nxc6 - Knight captures the hanging queen

## Right moves for the solution to the medium chess puzzle 0050

Based on the objective of the puzzle, you have to make the right moves. Following are the right moves

1. d8=N+, Nxc6

## Explanation for the moves

1. d8=N+ - It is not necessary to always promote the pawn to a queen or rook. Even under-promotion to a knight will help. In this royal fork, the knight forks queen and the king
2. Nxc6 - Knight captures the hanging queen
3. Kg8 - Opponent's king escapes from the check threat
4. For right move - You know the power of the knight fork and promotion. Keep up the good work
5. For wrong move - You could have gained the queen by a knight from from the promoted pawn. Try again

## Categories of medium chess puzzle 0050

This medium chess puzzle falls in these categories.

1. [Medium chess puzzles](#)
2. [Gain puzzles in chess](#)

3. [Fork puzzles in chess](#)
4. [Promotion puzzles in chess](#)
5. [Strategy puzzles in chess](#)

## How to view the solution to medium chess puzzle 0050

To view the [solution to this puzzle](#), follow the steps given below

1. Go to the [puzzle page](#)
2. Click the solution button (Key as shown [below](#)) to view the solution

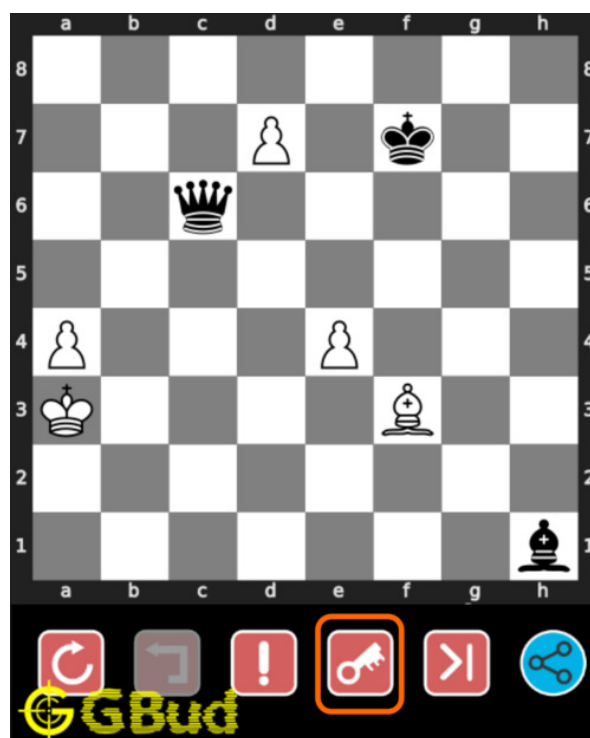


Figure 7: Click the solution button to view solutions @ <https://gbud.in/gnp1d52>

## How to get help for moves in the medium chess puzzle 0050

To get help or the possible next moves in the puzzle, , follow the steps given below

1. Go to the [puzzle page](#)
2. Click the help button (exclamation mark as shown [below](#)) to get help or suggestion on next possible [move](#)

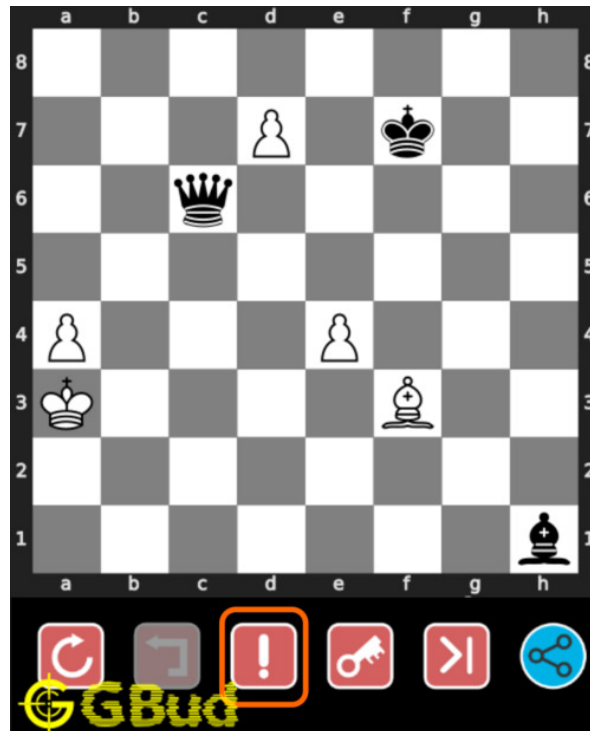


Figure 8: Click the help button to get help on next move @ <https://gbud.in/gnp1d52>



Figure 9: Solve more medium puzzles @ <https://gbud.in/chsmdpz>



Figure 10: Solve other puzzles @ <https://gbud.in/chsgppz>



## Play chess for free



Figure 11: Play chess online for free. Solve puzzles and play with friends

Play chess for free at <https://gbud.in/chs>

We present you a platform to play chess online with friends for free. No need to install any app. You can play chess for free without registration or login.

Simple. You can do several chess related activities.

1. [solve chess puzzles](#)
2. [learn about chess](#)
3. [play chess with computer](#)
4. [play chess with friend](#)
5. [create your own chess games](#)
6. [fen viewer](#)
7. [fen editor](#)
8. [fen generator](#)
9. [pgn viewer](#)
10. [chess board editor](#)

11. [view famous chess games.](#)



Figure 12: Solve this puzzle online by scanning this QR code or go to the link below

<https://gbud.in/gnp1d52>

Read the latest article on Medium Chess puzzle # 0050 - Gain queen by scanning this QR code or click the link

Previous article : [« Medium Chess puzzle # 0049 - Gain queen](#)

Next article : [Medium chess puzzles »](#)

[Back to top](#)

[Contact Us](#)

© GBud Games 2021