



## Medium Chess Puzzle # 0048

By

G Bud Games  
<https://gbud.in>

October 20, 2021

## Contents

<b>Medium Chess puzzle # 0048 - Mate in 3 moves</b>	<b>3</b>
Medium chess puzzle 0048 . . . . .	3
Solution to medium chess puzzle 0048 . . . . .	4
Solution 1 . . . . .	4
Right moves for the solution to the medium chess puzzle 0048	7
Explanation for the moves . . . . .	7
Categories of medium chess puzzle 0048 . . . . .	7
How to view the solution to medium chess puzzle 0048 . . . . .	8
How to get help for moves in the medium chess puzzle 0048 . . . . .	8
Play chess for free . . . . .	10

## List of Figures

1	<a href="https://gbud.in/gf5db02">Solve this medium chess puzzle 0048. Mate in 3 moves @ https://gbud.in/gf5db02</a> . . . . .	3
2	<a href="https://gbud.in/gf5db02">Solve this medium chess puzzle online with solution @ https://gbud.in/gf5db02</a> . . . . .	3
3	<a href="#">Initial board position of medium chess puzzle 0048</a> . . . . .	4
4	<a href="#">Qh5+ - This is to force the opponent's king to move behind their friendly pawns</a> . . . . .	5
5	<a href="#">Kg8 - This is the only legal move available for the king to escape from the check threat by the queen</a> . . . . .	5
6	<a href="#">Ra8+ - Rook gives the next check</a> . . . . .	6
7	<a href="#">Qd8 - Opponent's queen is trying to block your rook. The queen can not stop your rook since the queen is not supported</a> . . . . .	6
8	<a href="#">Rxd8# - Rook captures the queen and checkmate</a> . . . . .	7
9	<a href="https://gbud.in/gf5db02">Click the solution button to view solutions @ https://gbud.in/gf5db02</a> . . . . .	8
10	<a href="https://gbud.in/gf5db02">Click the help button to get help on next move @ https://gbud.in/gf5db02</a> . . . . .	9
11	<a href="https://gbud.in/chsmdpz">Solve more medium puzzles @ https://gbud.in/chsmdpz</a> . . . . .	9
12	<a href="https://gbud.in/chsgppz">Solve other puzzles @ https://gbud.in/chsgppz</a> . . . . .	9
13	<a href="#">Play chess online for free. Solve puzzles and play with friends</a> . . . . .	10
14	<a href="#">Solve this puzzle online by scanning this QR code or go to the link below</a> . . . . .	11

## Medium Chess puzzle # 0048 - Mate in 3 moves

Solve this medium chess puzzle and improve your chess games through improvement of your chess strategies and chess tactics.

Puzzle No : 0048

Difficulty level : medium

Description : Mate in 3 moves

Next Move : White

Player level : Intermediate

Short URL for puzzle : <https://gbud.in/gf5db02>

### Medium chess puzzle 0048

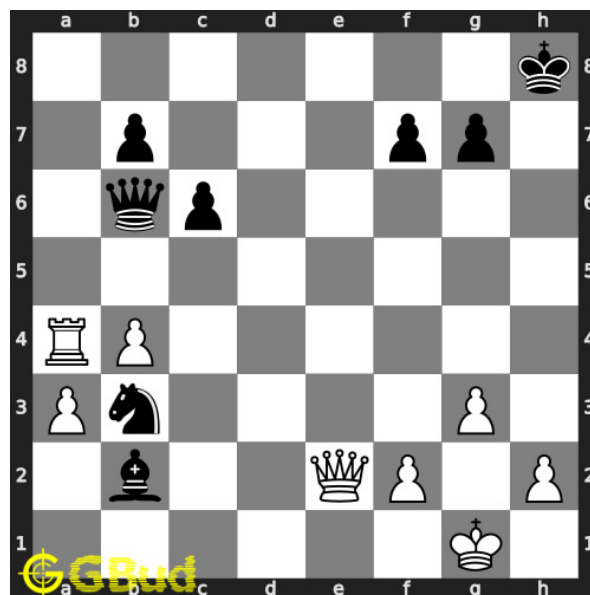


Figure 1: Solve this medium chess puzzle 0048. Mate in 3 moves @ <https://gbud.in/gf5db02>



Figure 2: Solve this medium chess puzzle online with solution @ <https://gbud.in/gf5db02>

## Solution to medium chess puzzle 0048

At this puzzle, next **move** is by **White**. The objective of the puzzle is to mate in 3 moves.

See the interactive solution at the [puzzle page](#)

### Solution 1

**Initial board position** This is the initial board position of medium chess puzzle 0048.

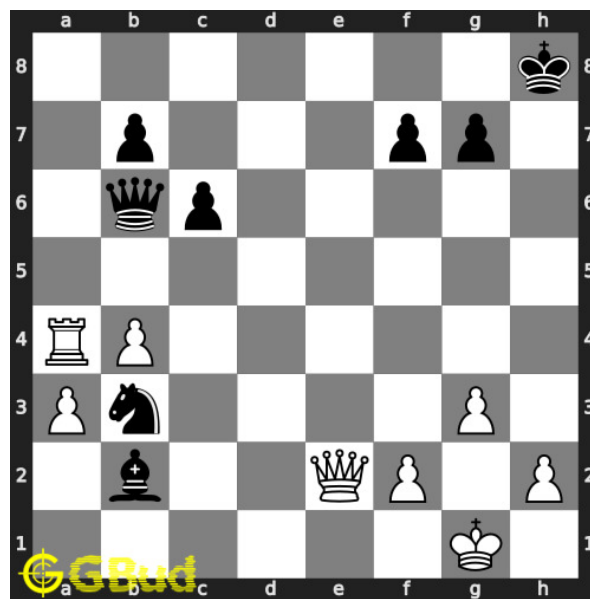


Figure 3: Initial board position of medium chess puzzle 0048

**Move 1** Move by white

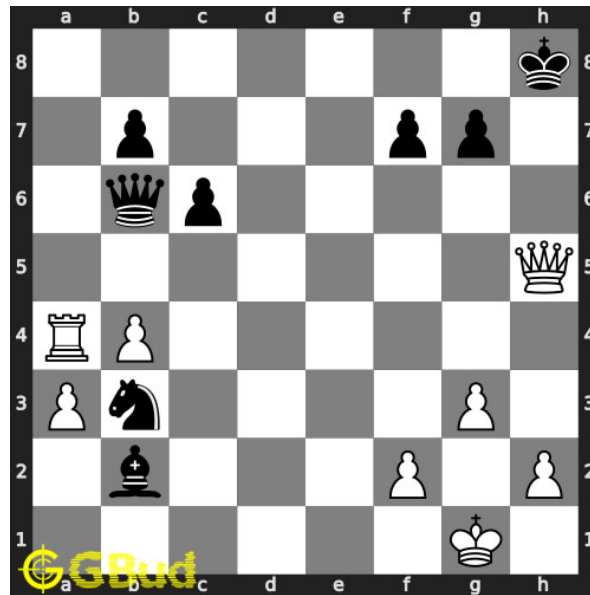


Figure 4: Qh5+ - This is to force the opponent's king to move behind their friendly pawns

**Move 2** Move by black

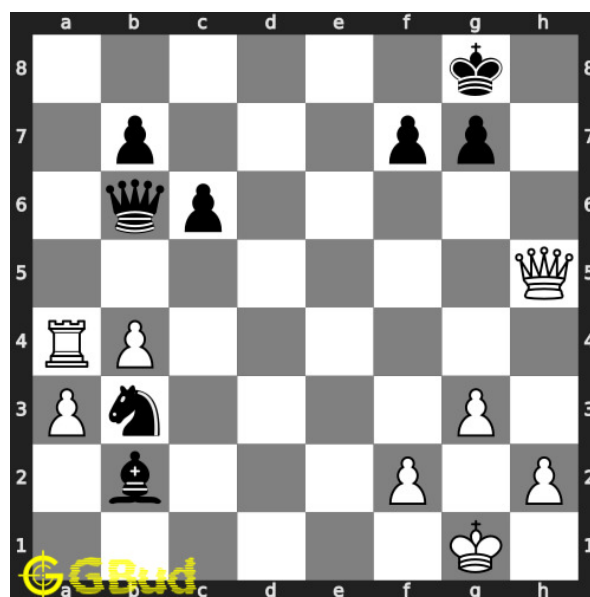


Figure 5: Kg8 - This is the only legal move available for the king to escape from the check threat by the queen

**Move 3** Move by white

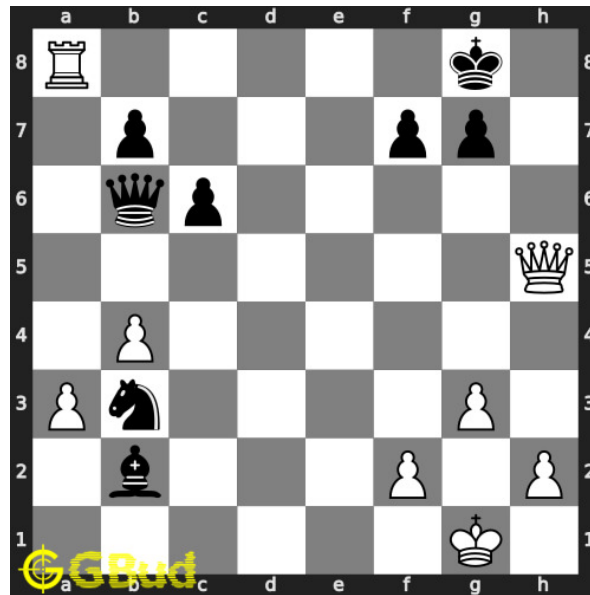


Figure 6: Ra8+ - Rook gives the next check

**Move 4** Move by black

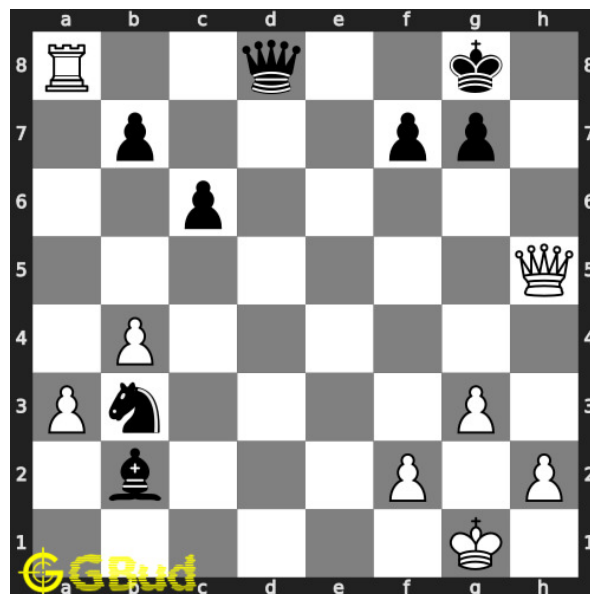


Figure 7: Qd8 - Opponent's queen is trying to block your rook. The queen can not stop your rook since the queen is not supported

**Move 5** Move by white

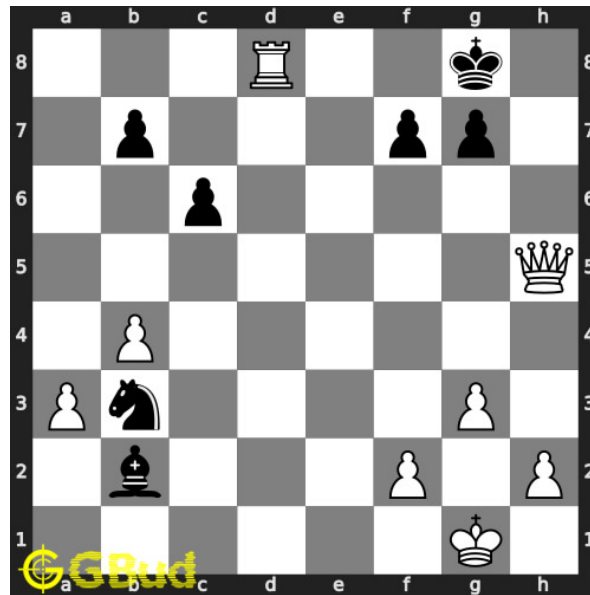


Figure 8: Rxd8# - Rook captures the queen and checkmate

## Right moves for the solution to the medium chess puzzle 0048

Based on the objective of the puzzle, you have to make the right moves. Following are the right moves

1. Qh5+, Ra8+, Rxd8#

## Explanation for the moves

1. Qh5+ - This is to force the opponent's king to move behind their friendly pawns
2. Ra8+ - Rook gives the next check
3. Rxd8# - Rook captures the queen and checkmate
4. Kg8 - This is the only legal move available for the king to escape from the check threat by the queen
5. Qd8 - Opponent's queen is trying to block your rook. The queen can not stop your rook since the queen is not supported
6. For right move - You have threatened the king and had a checkmate. Keep up the good work
7. For wrong move - You could have used your queen and rook to have a checkmate in three moves. Try again

## Categories of medium chess puzzle 0048

This medium chess puzzle falls in these categories.

1. [Medium chess puzzles](#)
2. [Mate in 3 puzzles in chess](#)
3. [Endgame puzzles in chess](#)

## How to view the solution to medium chess puzzle 0048

To view the [solution to this puzzle](#), follow the steps given below

1. Go to the [puzzle page](#)
2. Click the solution button (Key as shown [below](#)) to view the solution



Figure 9: Click the solution button to view solutions @ <https://gbud.in/gf5db02>

## How to get help for moves in the medium chess puzzle 0048

To get help or the possible next moves in the puzzle, , follow the steps given below

1. Go to the [puzzle page](#)
2. Click the help button (exclamation mark as shown [below](#)) to get help or suggestion on next possible [move](#)





Figure 10: Click the help button to get help on next move @ <https://gbud.in/gf5db02>



Figure 11: Solve more medium puzzles @ <https://gbud.in/chsmdpz>



Figure 12: Solve other puzzles @ <https://gbud.in/chsgppz>

## Play chess for free



Figure 13: Play chess online for free. Solve puzzles and play with friends

Play chess for free at <https://gbud.in/chs>

We present you a platform to play chess online with friends for free. No need to install any app. You can play chess for free without registration or login.

Simple. You can do several chess related activities.

1. [solve chess puzzles](#)
2. [learn about chess](#)
3. [play chess with computer](#)
4. [play chess with friend](#)
5. [create your own chess games](#)
6. [fen viewer](#)
7. [fen editor](#)
8. [fen generator](#)
9. [pgn viewer](#)
10. [chess board editor](#)

11. [view famous chess games.](#)



Figure 14: Solve this puzzle online by scanning this QR code or go to the link below

<https://gbud.in/gf5db02>

Read the latest article on Medium Chess puzzle # 0048 - Mate in 3 moves by scanning this QR code or click the link

Previous article : [« Medium Chess puzzle # 0047 - Mate in 2 moves](#)

Next article : [Medium chess puzzles »](#)

[Back to top](#)

[Contact Us](#)

© GBud Games 2021