



Medium Chess Puzzle # 0047

By

G Bud Games
<https://gbud.in>

October 20, 2021

Contents

Medium Chess puzzle # 0047 - Mate in 2 moves	4
Medium chess puzzle 0047	4
Solution to medium chess puzzle 0047	5
Solution 1	5
Solution 2	7
Right moves for the solution to the medium chess puzzle 0047	9
Explanation for the moves	9
Categories of medium chess puzzle 0047	9
How to view the solution to medium chess puzzle 0047	10
How to get help for moves in the medium chess puzzle 0047	10
Play chess for free	12

List of Figures

1	Solve this medium chess puzzle 0047. Mate in 2 moves @ https://gbud.in/g9tvqh2	4
2	Solve this medium chess puzzle online with solution @ https://gbud.in/g9tvqh2	4
3	Initial board position of medium chess puzzle 0047	5
4	Qg8+ - This is a deflection sacrifice to force the rook to move from its position where it blocks your pawn	6
5	Rxg8 - Opponent's rook is forced to move from its critical position. This is a zugzwang move	6
6	hxc8=Q# - Your pawn is promoted to a queen and checkmate	7
7	Initial board position of medium chess puzzle 0047	7
8	Qg8+ - This is a deflection sacrifice to force the rook to move from its position where it blocks your pawn	8
9	Rxg8 - Opponent's rook is forced to move from its critical position. This is a zugzwang move	8
10	hxc8=R# - Your pawn is promoted to a rook and checkmate	9
11	Click the solution button to view solutions @ https://gbud.in/g9tvqh2	10
12	Click the help button to get help on next move @ https://gbud.in/g9tvqh2	11
13	Solve more medium puzzles @ https://gbud.in/chsmdpz	11
14	Solve other puzzles @ https://gbud.in/chsgppz	11
15	Play chess online for free. Solve puzzles and play with friends	12

16 Solve this puzzle online by scanning this QR code or go to
the link below 13

Medium Chess puzzle # 0047 - Mate in 2 moves

Solve this medium chess puzzle and improve your chess games through improvement of your chess strategies and chess tactics.

Puzzle No : 0047

Difficulty level : medium

Description : Mate in 2 moves

Next Move : White

Player level : Intermediate

Short URL for puzzle : <https://gbud.in/g9tvqh2>

Medium chess puzzle 0047

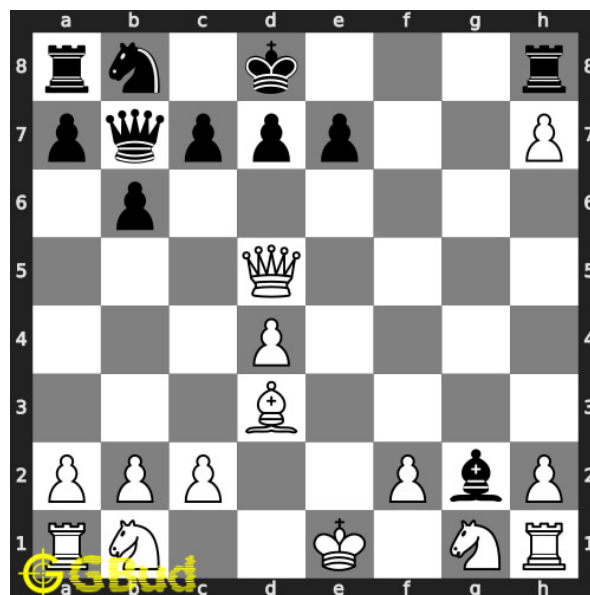


Figure 1: Solve this medium chess puzzle 0047. Mate in 2 moves @ <https://gbud.in/g9tvqh2>



Figure 2: Solve this medium chess puzzle online with solution @ <https://gbud.in/g9tvqh2>

Solution to medium chess puzzle 0047

At this puzzle, next **move** is by **White**. The objective of the puzzle is to mate in 2 moves.

See the interactive solution at the [puzzle page](#)

Solution 1

Initial board position This is the initial board position of medium chess puzzle 0047.

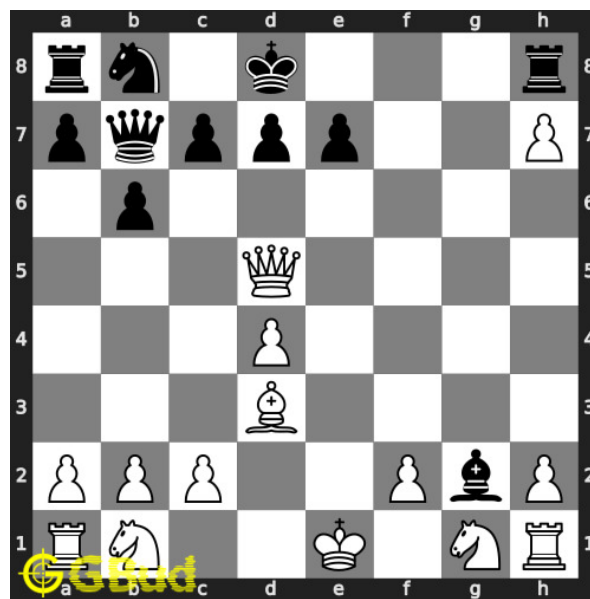


Figure 3: Initial board position of medium chess puzzle 0047

Move 1 Move by white

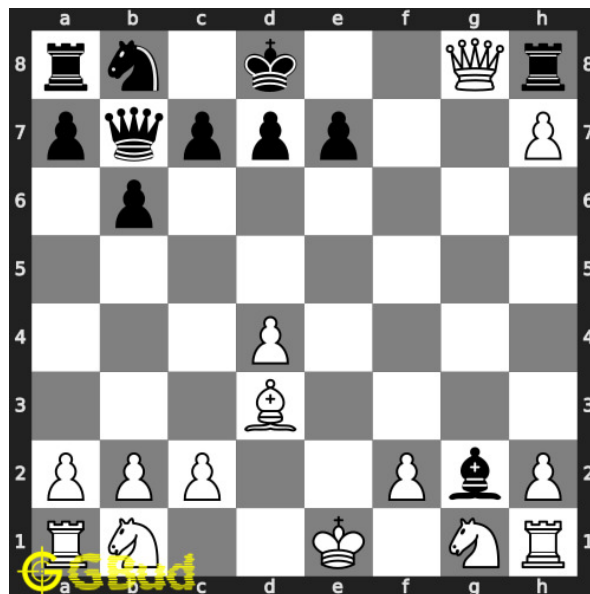


Figure 4: Qg8+ - This is a deflection sacrifice to force the rook to move from its position where it blocks your pawn

Move 2 Move by black

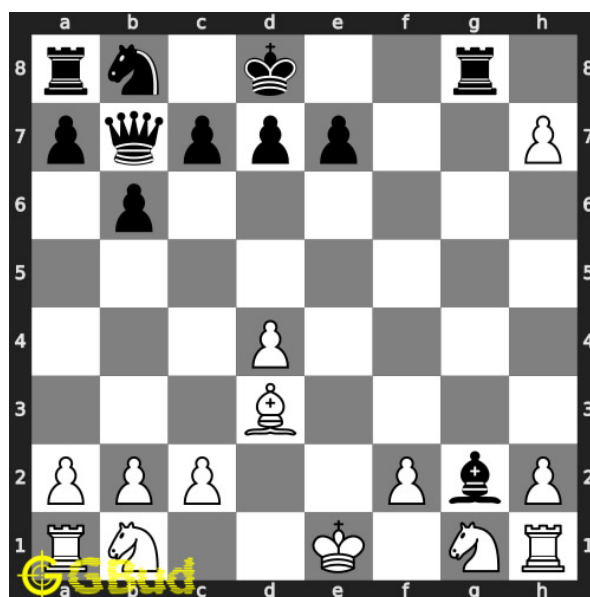


Figure 5: Rxc8 - Opponent's rook is forced to move from its critical position. This is a zugzwang move

Move 3 Move by white

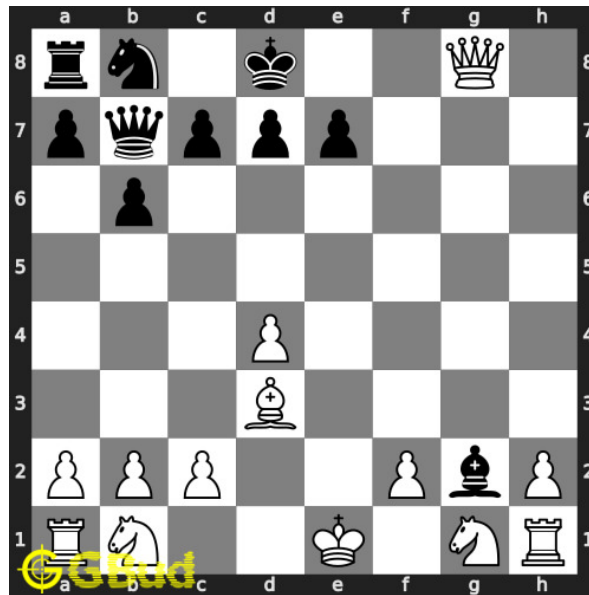


Figure 6: hxg8=Q# - Your pawn is promoted to a queen and checkmate

Solution 2

Initial board position This is the initial board position of medium chess puzzle 0047.

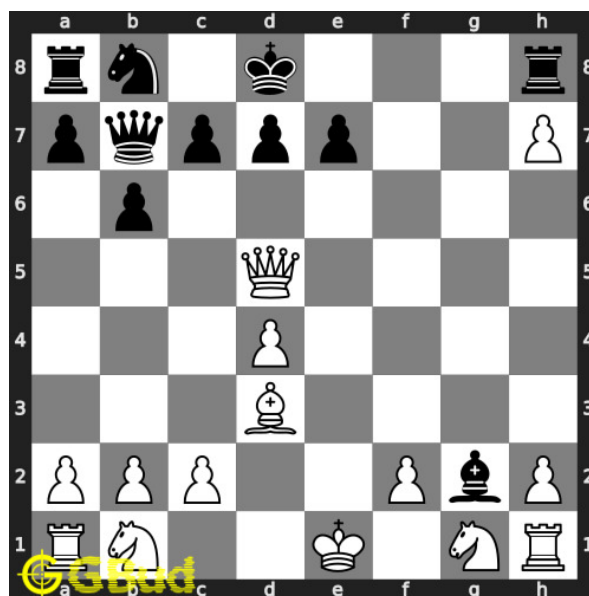


Figure 7: Initial board position of medium chess puzzle 0047

Move 1 Move by white

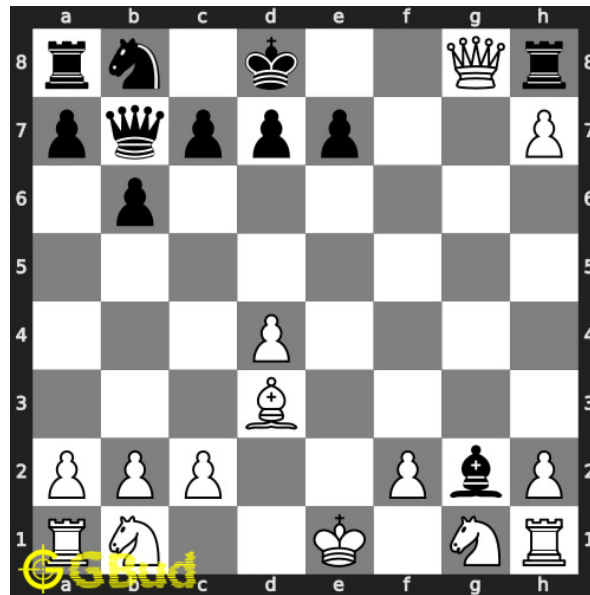


Figure 8: Qg8+ - This is a deflection sacrifice to force the rook to move from its position where it blocks your pawn

Move 2 Move by black

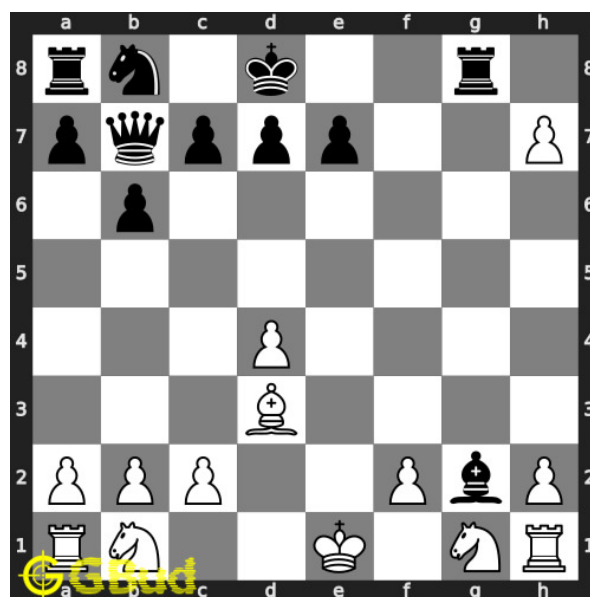


Figure 9: Rxg8 - Opponent's rook is forced to move from its critical position. This is a zugzwang move

Move 3 Move by white

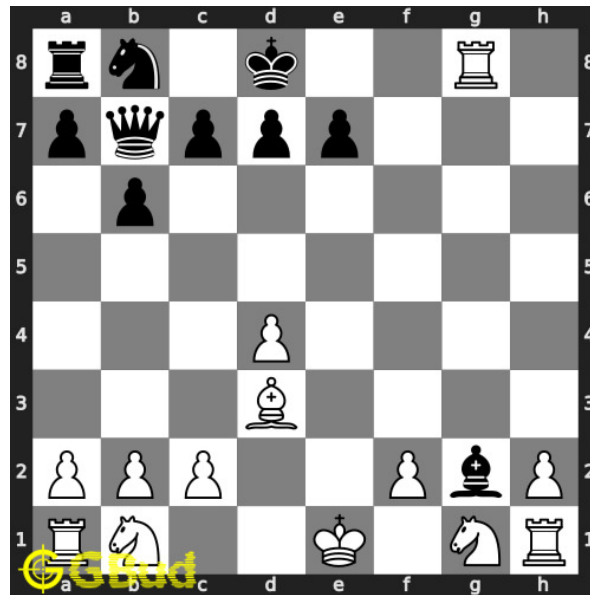


Figure 10: hxg8=R# - Your pawn is promoted to a rook and checkmate

Right moves for the solution to the medium chess puzzle 0047

Based on the objective of the puzzle, you have to make the right moves. Following are the right moves

1. Qg8+, hxg8=Q#
2. Qg8+, hxg8=R#

Explanation for the moves

1. Qg8+ - This is a deflection sacrifice to force the rook to move from its position where it blocks your pawn
2. hxg8=Q# - Your pawn is promoted to a queen and checkmate
3. hxg8=R# - Your pawn is promoted to a rook and checkmate
4. Rxg8 - Opponent's rook is forced to move from its critical position. This is a zugzwang move
5. For right move - You have forced the rook to move so that your pawn can be promoted and checkmate. Nice planning
6. For wrong move - You could have sacrificed your queen to allow the pawn promotion and checkmate. Try again

Categories of medium chess puzzle 0047

This medium chess puzzle falls in these categories.

1. [Medium chess puzzles](#)
2. [Sacrifice puzzles in chess](#)
3. [Mate in 2 puzzles in chess](#)
4. [Endgame puzzles in chess](#)
5. [Promotion puzzles in chess](#)
6. [Strategy puzzles in chess](#)
7. [Zugzwang puzzles in chess](#)

How to view the solution to medium chess puzzle 0047

To view the [solution to this puzzle](#), follow the steps given below

1. Go to the [puzzle page](#)
2. Click the solution button (Key as shown [below](#)) to view the solution



Figure 11: Click the solution button to view solutions @ <https://gbud.in/g9tvqh2>

How to get help for moves in the medium chess puzzle 0047

To get help or the possible next moves in the puzzle, , follow the steps given below

1. Go to the [puzzle page](#)
2. Click the help button (exclamation mark as shown [below](#)) to get help or suggestion on next possible [move](#)



Figure 12: Click the help button to get help on next move @ <https://gbud.in/g9tvqh2>



Figure 13: Solve more medium puzzles @ <https://gbud.in/chsmdpz>



Figure 14: Solve other puzzles @ <https://gbud.in/chsgppz>

Play chess for free

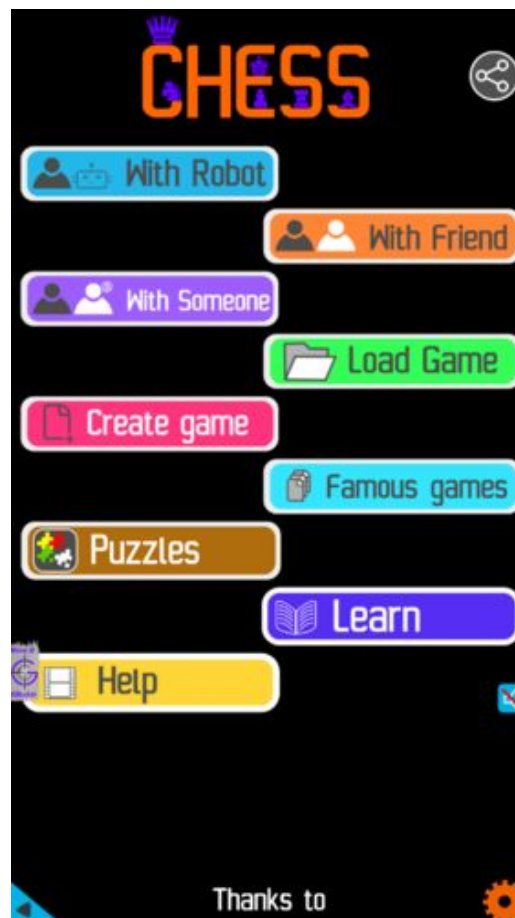


Figure 15: Play chess online for free. Solve puzzles and play with friends

Play chess for free at <https://gbud.in/chs>

We present you a platform to play chess online with friends for free. No need to install any app. You can play chess for free without registration or login.

Simple. You can do several chess related activities.

1. [solve chess puzzles](#)
2. [learn about chess](#)
3. [play chess with computer](#)
4. [play chess with friend](#)
5. [create your own chess games](#)
6. [fen viewer](#)
7. [fen editor](#)
8. [fen generator](#)
9. [pgn viewer](#)
10. [chess board editor](#)

11. [view famous chess games.](#)



Figure 16: Solve this puzzle online by scanning this QR code or go to the link below

<https://gbud.in/g9tvqh2>

Read the latest article on Medium Chess puzzle # 0047 - Mate in 2 moves by scanning this QR code or click the link

Previous article : « [Medium Chess puzzle # 0046 - Mate in 3 moves](#)

Next article : [Medium Chess puzzle # 0048 - Mate in 3 moves](#) »

[Back to top](#)

[Contact Us](#)

© GBud Games 2021