



Medium Chess Puzzle # 0046

By

G Bud Games
<https://gbud.in>

October 18, 2021

Contents

| | |
|---|----------|
| Medium Chess puzzle # 0046 - Mate in 3 moves | 3 |
| Medium chess puzzle 0046 | 3 |
| Solution to medium chess puzzle 0046 | 4 |
| Solution 1 | 4 |
| Right moves for the solution to the medium chess puzzle 0046 | 7 |
| Explanation for the moves | 7 |
| Categories of medium chess puzzle 0046 | 8 |
| How to view the solution to medium chess puzzle 0046 | 8 |
| How to get help for moves in the medium chess puzzle 0046 | 9 |
| Play chess for free | 10 |

List of Figures

| | | |
|----|--|----|
| 1 | Solve this medium chess puzzle 0046. Mate in 3 moves @ https://gbud.in/g5sz1l2 | 3 |
| 2 | Solve this medium chess puzzle online with solution @ https://gbud.in/g5sz1l2 | 3 |
| 3 | Initial board position of medium chess puzzle 0046 | 4 |
| 4 | Qxg7+ - This sacrifice of the queen breaks the pawn structure before the castled king | 5 |
| 5 | Kxg7 - Opponent's king is forced to capture your queen. This is a zugzwang move | 5 |
| 6 | Ne6+ - This is a double discovered check as both knight and bishop are giving check | 6 |
| 7 | Kg8 - This is the only legal move available to escape from the double discovered check | 6 |
| 8 | Rg3# - King has no free squares to move as the squares are blocked by friendly pieces. This is a checkmate | 7 |
| 9 | Click the solution button to view solutions @ https://gbud.in/g5sz1l2 | 8 |
| 10 | Click the help button to get help on next move @ https://gbud.in/g5sz1l2 | 9 |
| 11 | Solve more medium puzzles @ https://gbud.in/chsmdpz | 9 |
| 12 | Solve other puzzles @ https://gbud.in/chsgppz | 9 |
| 13 | Play chess online for free. Solve puzzles and play with friends | 10 |
| 14 | Solve this puzzle online by scanning this QR code or go to the link below | 11 |

Medium Chess puzzle # 0046 - Mate in 3 moves

Solve this medium chess puzzle and improve your chess games through improvement of your chess strategies and chess tactics.

Puzzle No : 0046

Difficulty level : medium

Description : Mate in 3 moves

Next Move : White

Player level : Intermediate

Short URL for puzzle : <https://gbud.in/g5sz112>

Medium chess puzzle 0046

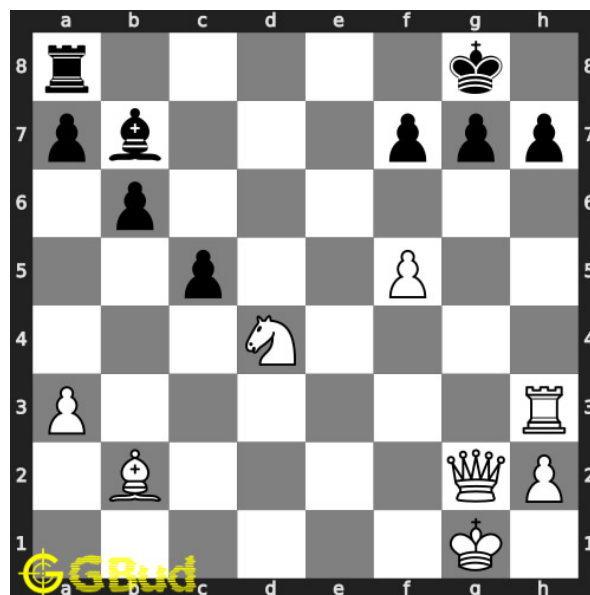


Figure 1: Solve this medium chess puzzle 0046. Mate in 3 moves @ <https://gbud.in/g5sz112>



Figure 2: Solve this medium chess puzzle online with solution @ <https://gbud.in/g5sz112>

Solution to medium chess puzzle 0046

At this puzzle, next **move** is by **White**. The objective of the puzzle is to mate in 3 moves.

See the interactive solution at the [puzzle page](#)

Solution 1

Initial board position This is the initial board position of medium chess puzzle 0046.

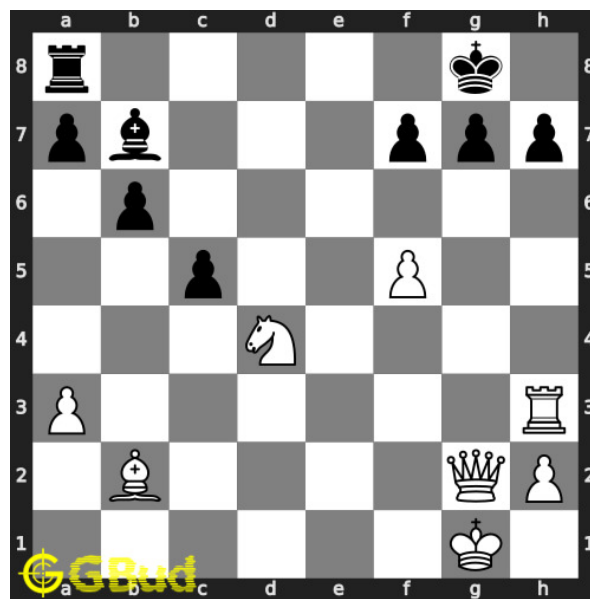


Figure 3: Initial board position of medium chess puzzle 0046

Move 1 Move by white

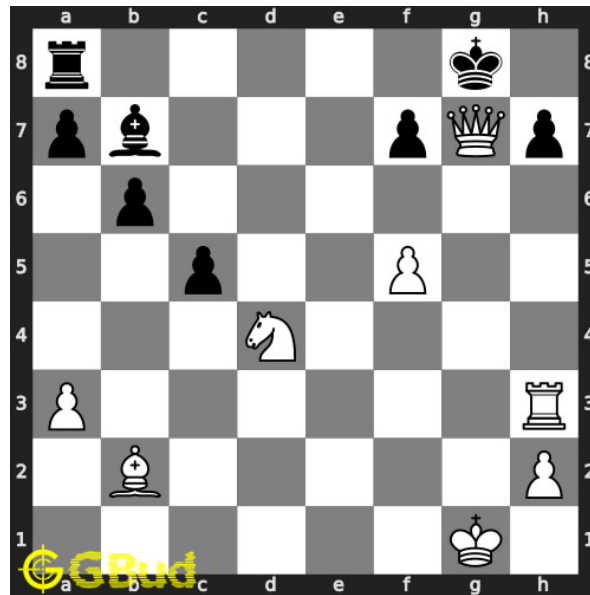


Figure 4: Qxg7+ - This sacrifice of the queen breaks the pawn structure before the castled king

Move 2 Move by black

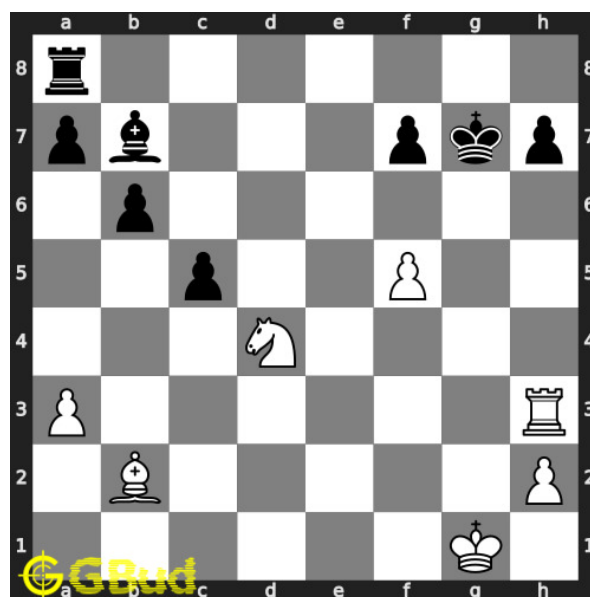


Figure 5: Kxg7 - Opponent's king is forced to capture your queen. This is a zugzwang move

Move 3 Move by white

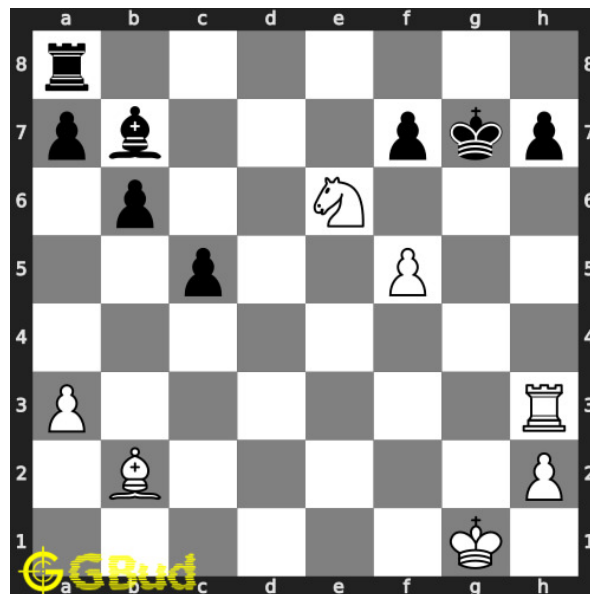


Figure 6: Ne6+ - This is a double discovered check as both knight and bishop are giving check

Move 4 Move by black

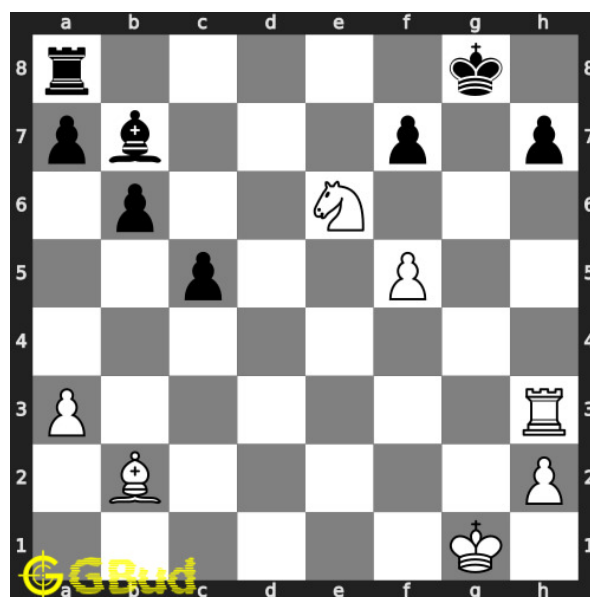


Figure 7: Kg8 - This is the only legal move available to escape from the double discovered check

Move 5 Move by white

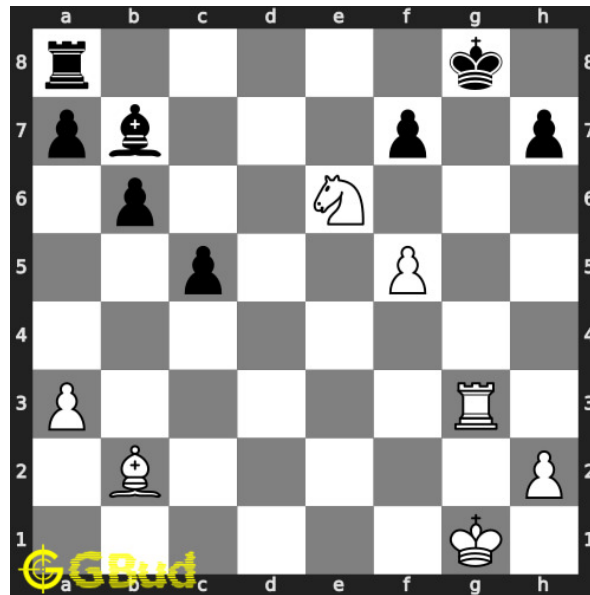


Figure 8: Rg3# - King has no free squares to move as the squares are blocked by friendly pieces. This is a checkmate

Right moves for the solution to the medium chess puzzle 0046

Based on the objective of the puzzle, you have to make the right moves. Following are the right moves

1. Qxg7+, Ne6+, Rg3#

Explanation for the moves

1. Qxg7+ - This sacrifice of the queen breaks the pawn structure before the castled king
2. Kxg7 - Opponent's king is forced to capture your queen. This is a zugzwang move
3. Ne6+ - This is a double discovered check as both knight and bishop are giving check
4. Rg3# - King has no free squares to move as the squares are blocked by friendly pieces. This is a checkmate
5. Kg8 - This is the only legal move available to escape from the double discovered check
6. For right move - Your combination of sacrifice and double discovered check helped you win the game. Keep it up
7. For wrong move - You could have won after the sacrifice of the queen and a double discovered check. Try again

Categories of medium chess puzzle 0046

This medium chess puzzle falls in these categories.

1. [Medium chess puzzles](#)
2. [Sacrifice puzzles in chess](#)
3. [Mate in 3 puzzles in chess](#)
4. [Endgame puzzles in chess](#)
5. [Strategy puzzles in chess](#)
6. [Zugzwang puzzles in chess](#)

How to view the solution to medium chess puzzle 0046

To view the [solution to this puzzle](#), follow the steps given below

1. Go to the [puzzle page](#)
2. Click the solution button (Key as shown [below](#)) to view the solution



Figure 9: Click the solution button to view solutions @ <https://gbud.in/g5sz112>

How to get help for moves in the medium chess puzzle 0046

To get help or the possible next moves in the puzzle, , follow the steps given below

1. Go to the [puzzle page](#)
2. Click the help button (exclamation mark as shown [below](#)) to get help or suggestion on next possible [move](#)



Figure 10: Click the help button to get help on next move @ <https://gbud.in/g5sz112>



Figure 11: Solve more medium puzzles @ <https://gbud.in/chsmdpz>



Figure 12: Solve other puzzles @ <https://gbud.in/chsgppz>

Play chess for free

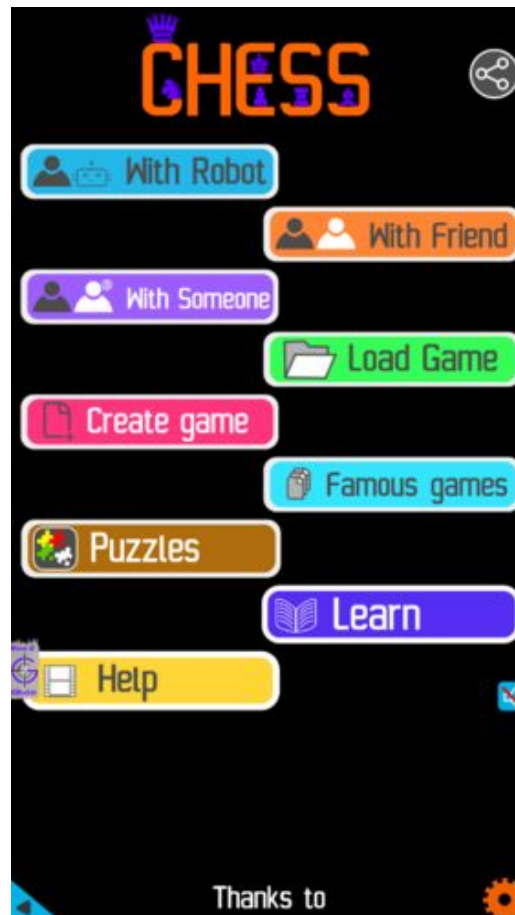


Figure 13: Play chess online for free. Solve puzzles and play with friends

Play chess for free at <https://gbud.in/chs>

We present you a platform to play chess online with friends for free. No need to install any app. You can play chess for free without registration or login.

Simple. You can do several chess related activities.

1. [solve chess puzzles](#)
2. [learn about chess](#)
3. [play chess with computer](#)
4. [play chess with friend](#)
5. [create your own chess games](#)

6. [fen viewer](#)
7. [fen editor](#)
8. [fen generator](#)
9. [pgn viewer](#)
10. [chess board editor](#)
11. [view famous chess games.](#)



Figure 14: Solve this puzzle online by scanning this QR code or go to the link below

<https://gbud.in/g5sz112>

Read the latest article on Medium Chess puzzle # 0046 - Mate in 3 moves by scanning this QR code or click the link

Previous article : [« Medium Chess puzzle # 0045 - Mate in 2 moves](#)

Next article : [Medium chess puzzles »](#)

[Back to top](#)

[Contact Us](#)