



Medium Chess Puzzle # 0041

By

G Bud Games
<https://gbud.in>

October 12, 2021

Contents

1	Medium Chess puzzle # 0041 - Mate in 2 moves	3
1.1	Medium chess puzzle 0041	4
1.2	Solution to medium chess puzzle 0041	4
1.2.1	Solution 1	5
1.2.2	Right moves for the solution to the medium chess puzzle 0041	8
1.2.3	Explanation for the moves	8
1.3	Categories of medium chess puzzle 0041	9
1.4	How to view the solution to medium chess puzzle 0041	9
1.5	How to get help for moves in the medium chess puzzle 0041	10
1.6	Play chess for free	11

List of Figures

1.1	Solve this medium chess puzzle 0041. Mate in 2 moves @ https://gbud.in/ghbfrv2	4
1.2	Solve this medium chess puzzle online with solution @ https://gbud.in/ghbfrv2	4
1.3	Initial board position of medium chess puzzle 0041	5
1.4	Rxd6 - This is a sacrifice move to attract the bishop to move from f8. This is a deflection move	6
1.5	Bxd6 - Opponent fell for the trap. The bishop left its guard to g7. This is a poor move	7
1.6	Qxg7# - The queen can not be captured since it is supported by the rook. This is a checkmate	8
1.7	Click the solution button to view solutions @ https://gbud.in/ghbfrv2	9
1.8	Click the help button to get help on next move @ https://gbud.in/ghbfrv2	10
1.9	Solve more medium puzzles @ https://gbud.in/chsmdpz	10
1.10	Solve other puzzles @ https://gbud.in/chsgppz	11
1.11	Play chess online for free. Solve puzzles and play with friends	11
1.12	Solve this puzzle online by scanning this QR code or go to the link below	12

Chapter 1

Medium Chess puzzle # 0041 - Mate in 2 moves

Solve this medium chess puzzle and improve your chess games through improvement of your chess strategies and chess tactics.

Puzzle No : 0041

Difficulty level : medium

Description : Mate in 2 moves

Next Move : White

Player level : Intermediate

Short URL for puzzle : <https://gbud.in/ghbfrv2>

1.1 Medium chess puzzle 0041

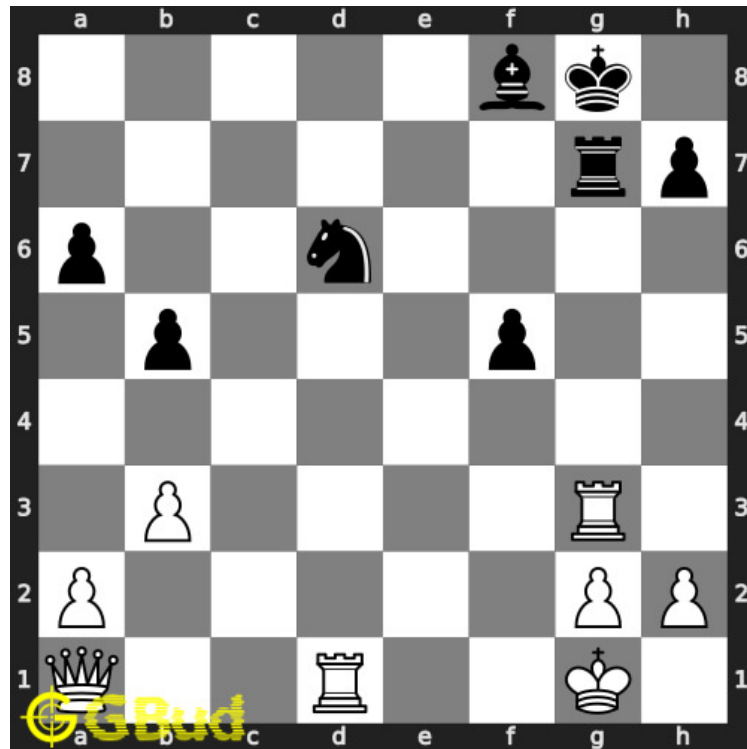


Figure 1.1: Solve this medium chess puzzle 0041. Mate in 2 moves @ <https://gbud.in/ghbfrv2>



Figure 1.2: Solve this medium chess puzzle online with solution @ <https://gbud.in/ghbfrv2>

1.2 Solution to medium chess puzzle 0041

At this puzzle, next **move** is by **White**. The objective of the puzzle is to mate in 2 moves.

See the interactive solution at the [puzzle page](#)

1.2.1 Solution 1

1.2.1.1 Initial board position

This is the initial board position of medium chess puzzle 0041.

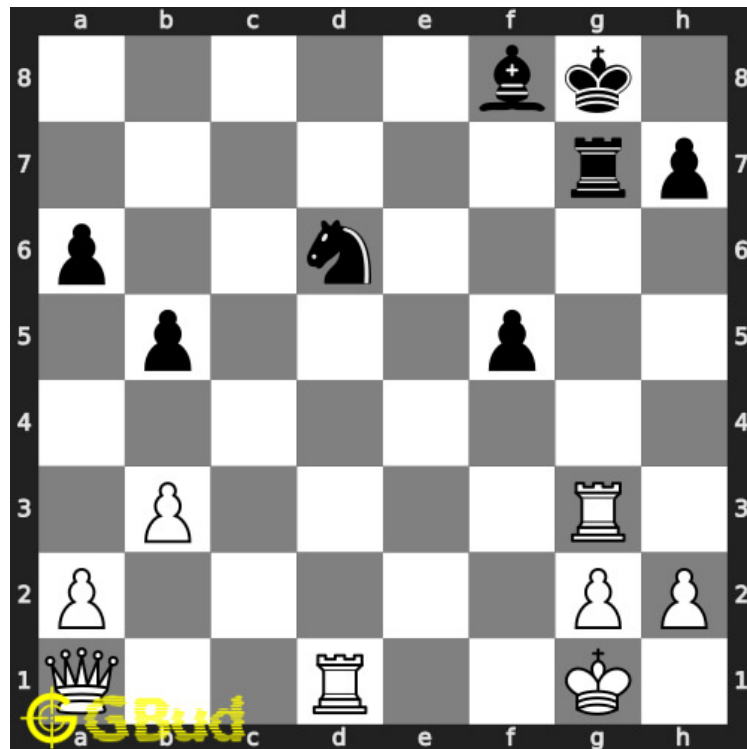


Figure 1.3: Initial board position of medium chess puzzle 0041

1.2.1.2 Move 1

Move by white

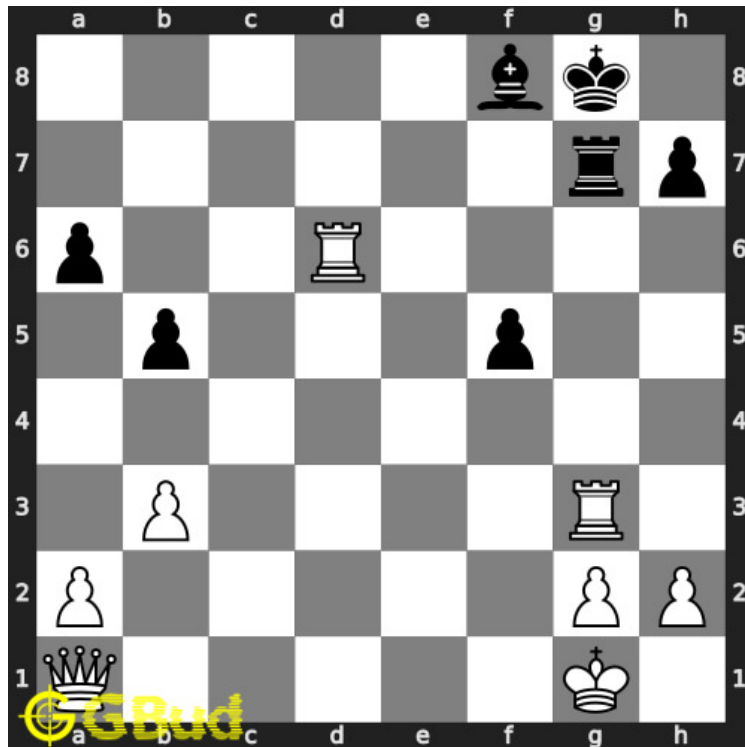


Figure 1.4: Rxd6 - This is a sacrifice move to attract the bishop to move from f8. This is a deflection move

1.2.1.3 Move 2

Move by black

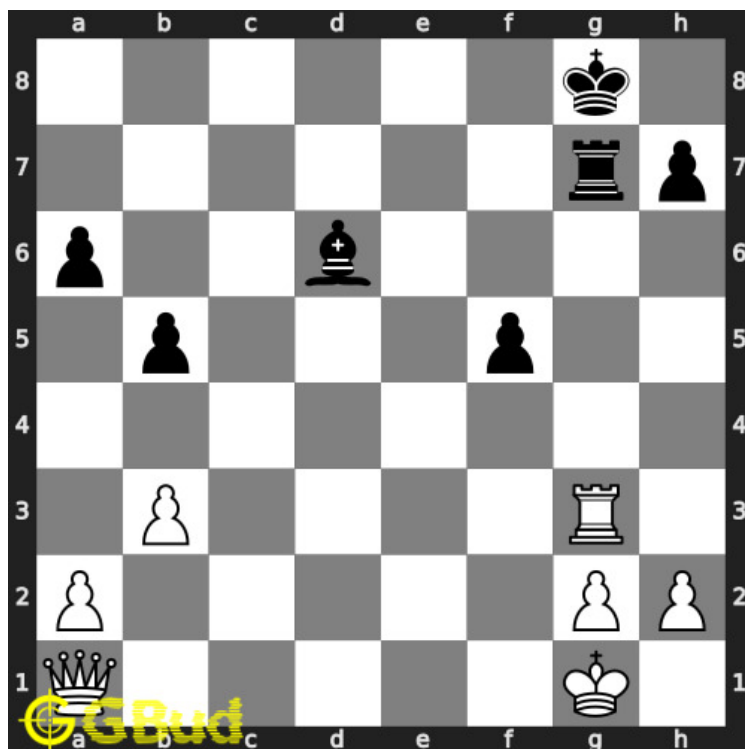


Figure 1.5: Bxd6 - Opponent fell for the trap. The bishop left its guard to g7. This is a poor move

1.2.1.4 Move 3

Move by white

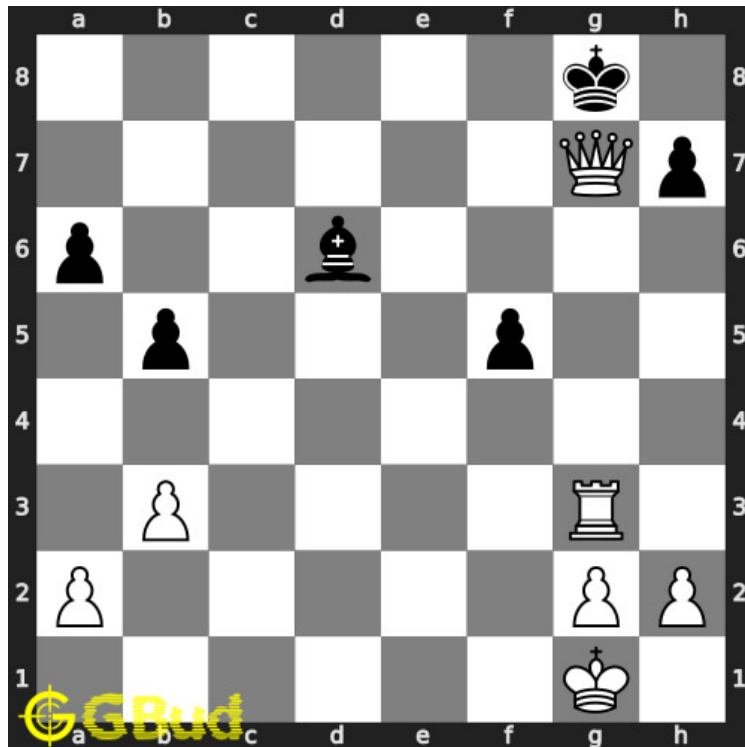


Figure 1.6: $Qxg7\#$ - The queen can not be captured since it is supported by the rook. This is a checkmate

1.2.2 Right moves for the solution to the medium chess puzzle 0041

Based on the objective of the puzzle, you have to make the right moves. Following are the right moves

1. $Rxd6$, $Qxg7\#$

1.2.3 Explanation for the moves

1. $Rxd6$ - This is a sacrifice move to attract the bishop to move from f8. This is a deflection move
2. $Qxg7\#$ - The queen can not be captured since it is supported by the rook. This is a checkmate
3. $Bxd6$ - Opponent fell for the trap. The bishop left its guard to g7. This is a poor move
4. For right move - You won the game after the sacrifice of the rook. Good moves
5. For wrong move - You could have sacrificed one of your rooks and end the game. Try again

1.3 Categories of medium chess puzzle 0041

This medium chess puzzle falls in these categories.

1. [Medium chess puzzles](#)
2. [Sacrifice puzzles in chess](#)
3. [Mate in 2 puzzles in chess](#)
4. [Endgame puzzles in chess](#)
5. [Strategy puzzles in chess](#)

1.4 How to view the solution to medium chess puzzle 0041

To view the [solution to this puzzle](#), follow the steps given below

1. Go to the [puzzle page](#)
2. Click the solution button (Key as shown [below](#)) to view the solution



Figure 1.7: Click the solution button to view solutions @ <https://gbud.in/ghbfrv2>

1.5 How to get help for moves in the medium chess puzzle 0041

To get help or the possible next moves in the puzzle, , follow the steps given below

1. Go to the [puzzle page](#)
2. Click the help button (exclamation mark as shown [below](#)) to get help or suggestion on next possible [move](#)



Figure 1.8: Click the help button to get help on next move @ <https://gbud.in/ghbfrv2>



Figure 1.9: Solve more medium puzzles @ <https://gbud.in/chsmdpz>



Figure 1.10: Solve other puzzles @ <https://gbud.in/chsgppz>

1.6 Play chess for free

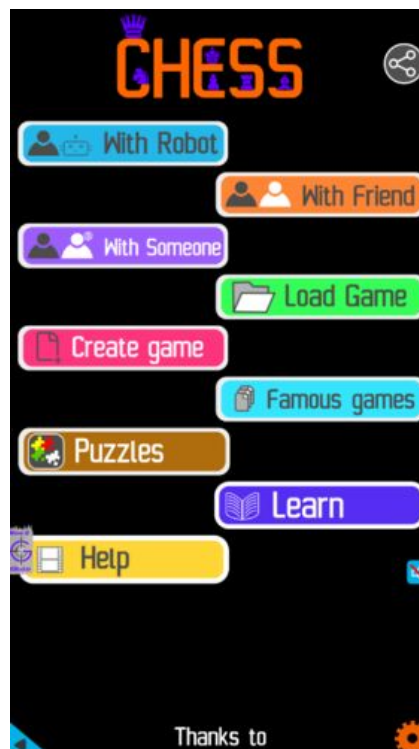


Figure 1.11: Play chess online for free. Solve puzzles and play with friends

Play chess for free at <https://gbud.in/chs>

We present you a platform to play chess online with friends for free. No need to install any app. You can play chess for free without registration or login.

Simple. You can do several chess related activities.

1. [solve chess puzzles](#)
2. [learn about chess](#)

3. [play chess with computer](#)
4. [play chess with friend](#)
5. [create your own chess games](#)
6. [fen viewer](#)
7. [fen editor](#)
8. [fen generator](#)
9. [pgn viewer](#)
10. [chess board editor](#)
11. [view famous chess games.](#)



Figure 1.12: Solve this puzzle online by scanning this QR code or go to the link below

<https://gbud.in/ghbfrv2>

Read the latest article on Medium Chess puzzle # 0041 - Mate in 2 moves by scanning this QR code or click the link

Previous article : [« Medium Chess puzzle # 0040 - Mate in 2 moves](#)

Next article : [Medium chess puzzles »](#)

[Back to top](#)

[Contact Us](#)

© GBud Games 2021