



## Medium Chess Puzzle # 0040

By

G Bud Games  
<https://gbud.in>

October 12, 2021

# Contents

<b>1</b>	<b>Medium Chess puzzle # 0040 - Mate in 2 moves</b>	<b>3</b>
1.1	Medium chess puzzle 0040 . . . . .	4
1.2	Solution to medium chess puzzle 0040 . . . . .	4
1.2.1	Solution 1 . . . . .	5
1.2.2	Right moves for the solution to the medium chess puzzle 0040 . . . . .	10
1.2.3	Explanation for the moves . . . . .	10
1.3	Categories of medium chess puzzle 0040 . . . . .	11
1.4	How to view the solution to medium chess puzzle 0040 . . . . .	11
1.5	How to get help for moves in the medium chess puzzle 0040 . . . . .	12
1.6	Play chess for free . . . . .	13

# List of Figures

1.1	Solve this medium chess puzzle 0040. Mate in 2 moves @ <a href="https://gbud.in/g1cg8t2">https://gbud.in/g1cg8t2</a> . . . . .	4
1.2	Solve this medium chess puzzle online with solution @ <a href="https://gbud.in/g1cg8t2">https://gbud.in/g1cg8t2</a> . . . . .	4
1.3	Initial board position of medium chess puzzle 0040 . . . . .	5
1.4	Rb1+ - This is to force the king to move to a8 . . . . .	6
1.5	Ka8 - King moves to a8 since this is the only square available	7
1.6	Bb7+ - This bishop can not be captured since this is supported by the rook . . . . .	8
1.7	Kb8 - King moves to b8 since this is the only square available	9
1.8	Bxc6# - This is a discovered check and ends in a checkmate. This is called Pillsbury's mate . . . . .	10
1.9	Click the solution button to view solutions @ <a href="https://gbud.in/g1cg8t2">https://gbud.in/g1cg8t2</a> . . . . .	11
1.10	Click the help button to get help on next move @ <a href="https://gbud.in/g1cg8t2">https://gbud.in/g1cg8t2</a> . . . . .	12
1.11	Solve more medium puzzles @ <a href="https://gbud.in/chsmdpz">https://gbud.in/chsmdpz</a> . . . . .	12
1.12	Solve other puzzles @ <a href="https://gbud.in/chsgppz">https://gbud.in/chsgppz</a> . . . . .	13
1.13	Play chess online for free. Solve puzzles and play with friends	13
1.14	Solve this puzzle online by scanning this QR code or go to the link below . . . . .	14

# Chapter 1

## Medium Chess puzzle # 0040 - Mate in 2 moves

Solve this medium chess puzzle and improve your chess games through improvement of your chess strategies and chess tactics.

Puzzle No : 0040

Difficulty level : medium

Description : Mate in 2 moves

Next Move : White

Player level : Intermediate

Short URL for puzzle : <https://gbud.in/g1cg8t2>

## 1.1 Medium chess puzzle 0040

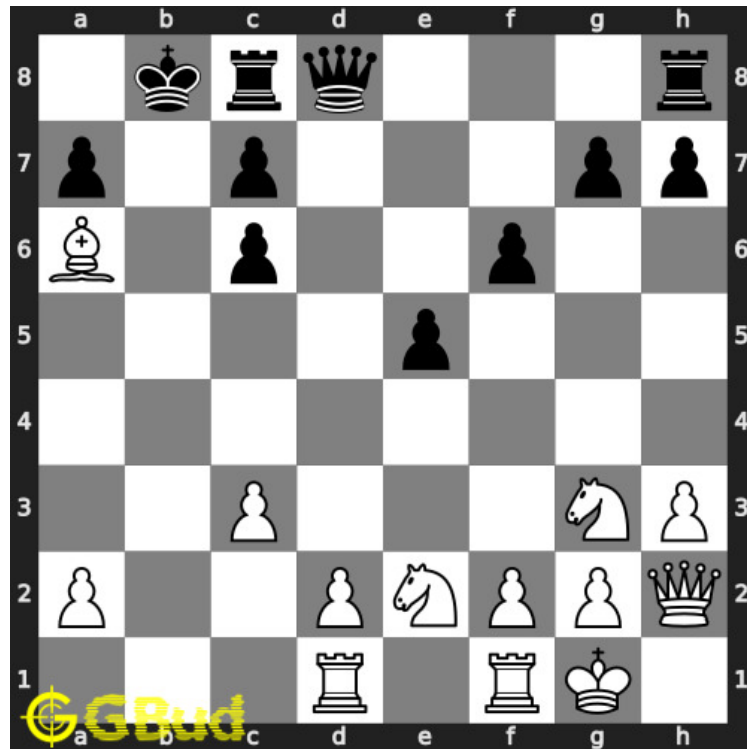


Figure 1.1: Solve this medium chess puzzle 0040. Mate in 2 moves @ <https://gbud.in/g1cg8t2>



Figure 1.2: Solve this medium chess puzzle online with solution @ <https://gbud.in/g1cg8t2>

## 1.2 Solution to medium chess puzzle 0040

At this puzzle, next **move** is by **White**. The objective of the puzzle is to mate in 2 moves.

See the interactive solution at the [puzzle page](#)

## 1.2.1 Solution 1

### 1.2.1.1 Initial board position

This is the initial board position of medium chess puzzle 0040.

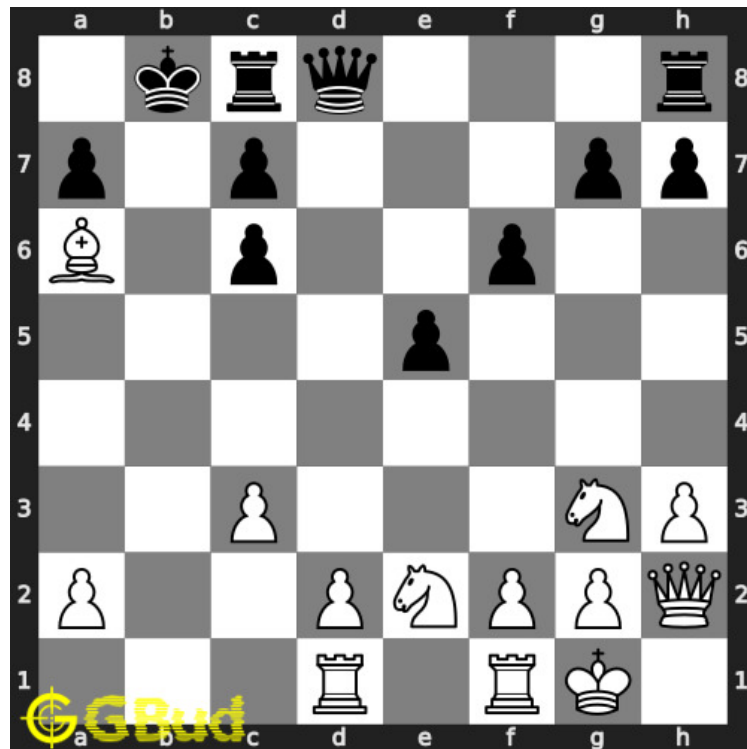


Figure 1.3: Initial board position of medium chess puzzle 0040

### 1.2.1.2 Move 1

Move by white

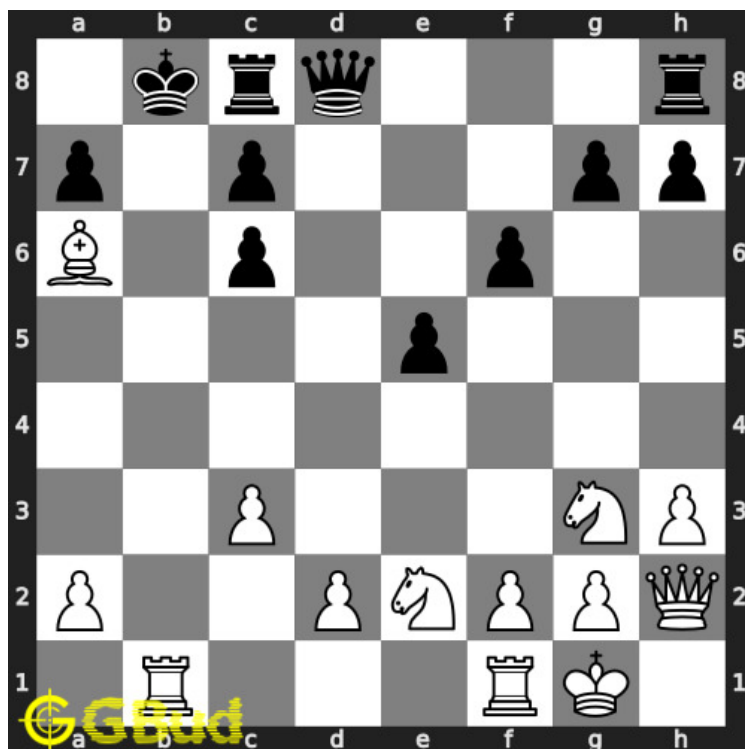


Figure 1.4: Rb1+ - This is to force the king to move to a8

### 1.2.1.3 Move 2

Move by black

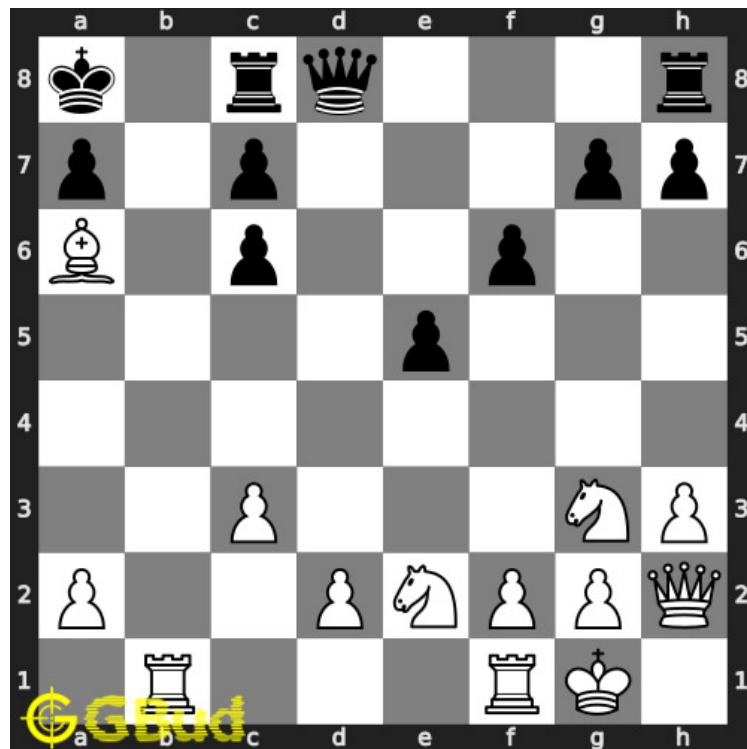


Figure 1.5: Ka8 - King moves to a8 since this is the only square available

### 1.2.1.4 Move 3

Move by white



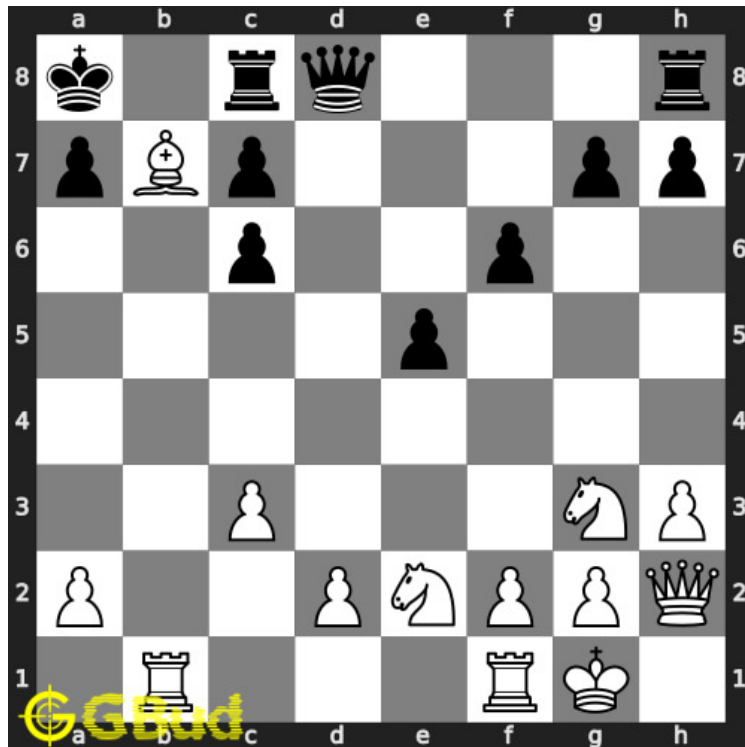


Figure 1.6: Bb7+ - This bishop can not be captured since this is supported by the rook

#### 1.2.1.5 Move 4

Move by black

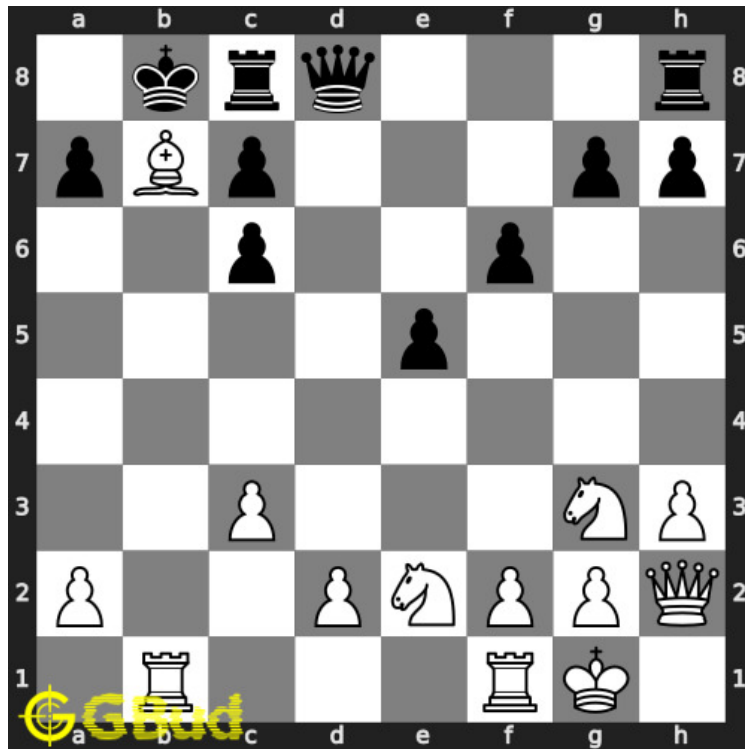


Figure 1.7: Kb8 - King moves to b8 since this is the only square available

### 1.2.1.6 Move 5

Move by white

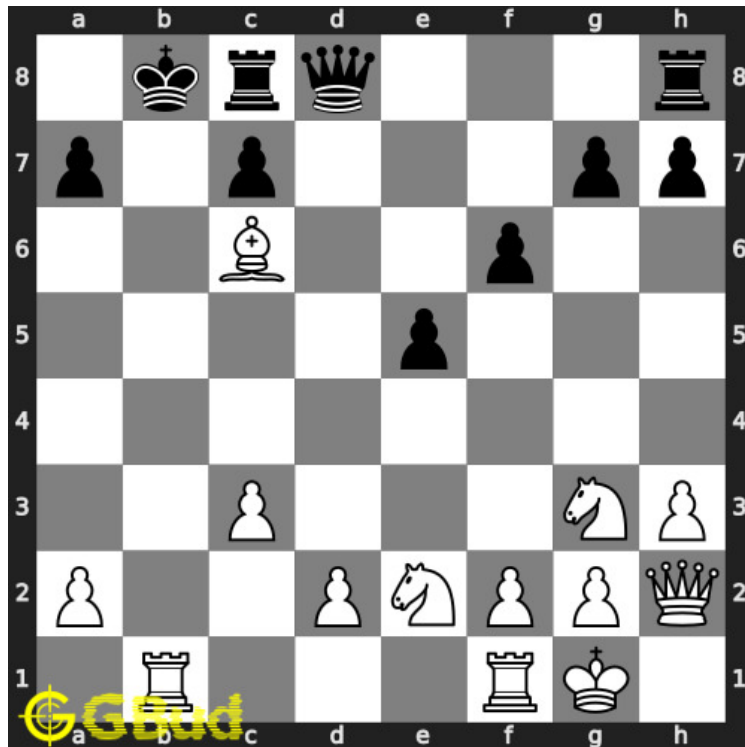


Figure 1.8: Bxc6# - This is a discovered check and ends in a checkmate. This is called Pillsbury's mate

## 1.2.2 Right moves for the solution to the medium chess puzzle 0040

Based on the objective of the puzzle, you have to make the right moves. Following are the right moves

1. Rb1+, Bb7+, Bxc6#

## 1.2.3 Explanation for the moves

1. Rb1+ - This is to force the king to move to a8
2. Bb7+ - This bishop can not be captured since this is supported by the rook
3. Bxc6# - This is a discovered check and ends in a checkmate. This is called Pillsbury's mate
4. Ka8 - King moves to a8 since this is the only square available
5. Kb8 - King moves to b8 since this is the only square available
6. For right move - You have used the discovered check effectively to end the game. continue solving puzzles.

7. For wrong move - You could have used the rook and bishop to win the game. Keep trying

## 1.3 Categories of medium chess puzzle 0040

This medium chess puzzle falls in these categories.

1. [Medium chess puzzles](#)
2. [Mate in 2 puzzles in chess](#)
3. [Endgame puzzles in chess](#)
4. [Strategy puzzles in chess](#)
5. [Mate pattern puzzles in chess](#)

## 1.4 How to view the solution to medium chess puzzle 0040

To view the [solution to this puzzle](#), follow the steps given below

1. Go to the [puzzle page](#)
2. Click the solution button (Key as shown [below](#)) to view the solution



Figure 1.9: Click the solution button to view solutions @ <https://gbud.in/g1cg8t2>

## 1.5 How to get help for moves in the medium chess puzzle 0040

To get help or the possible next moves in the puzzle, , follow the steps given below

1. Go to the [puzzle page](#)
2. Click the help button (exclamation mark as shown [below](#)) to get help or suggestion on next possible [move](#)



Figure 1.10: Click the help button to get help on next move @ <https://gbud.in/g1cg8t2>



Figure 1.11: Solve more medium puzzles @ <https://gbud.in/chsmdpz>



Figure 1.12: Solve other puzzles @ <https://gbud.in/chsgppz>

## 1.6 Play chess for free

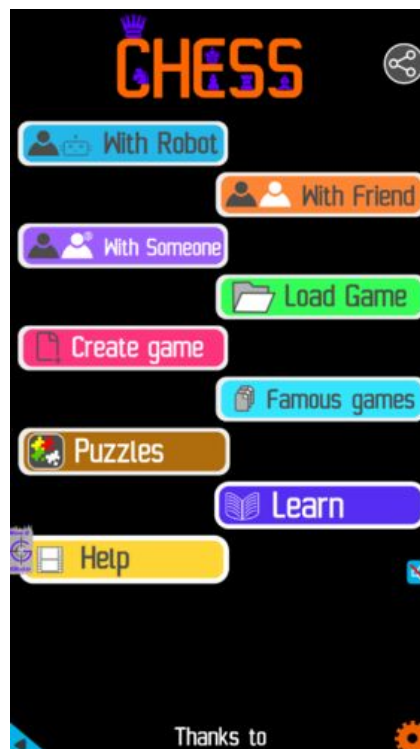


Figure 1.13: Play chess online for free. Solve puzzles and play with friends

Play chess for free at <https://gbud.in/chs>

We present you a platform to play chess online with friends for free. No need to install any app. You can play chess for free without registration or login.

Simple. You can do several chess related activities.

1. [solve chess puzzles](#)
2. [learn about chess](#)

3. [play chess with computer](#)
4. [play chess with friend](#)
5. [create your own chess games](#)
6. [fen viewer](#)
7. [fen editor](#)
8. [fen generator](#)
9. [pgn viewer](#)
10. [chess board editor](#)
11. [view famous chess games.](#)



Figure 1.14: Solve this puzzle online by scanning this QR code or go to the link below

<https://gbud.in/g1cg8t2>

Read the latest article on Medium Chess puzzle # 0040 - Mate in 2 moves by scanning this QR code or click the link

Previous article : « [Medium Chess puzzle # 0039 - Mate in 2 moves](#)

Next article : [Medium Chess puzzle # 0041 - Mate in 2 moves](#) »

[Back to top](#)

[Contact Us](#)

© GBud Games 2021