



Medium Chess Puzzle # 0039

By

G Bud Games
<https://gbud.in>

October 12, 2021

Contents

1	Medium Chess puzzle # 0039 - Mate in 2 moves	4
1.1	Medium chess puzzle 0039	5
1.2	Solution to medium chess puzzle 0039	5
1.2.1	Solution 1	6
1.2.2	Solution 2	9
1.2.3	Solution 3	13
1.2.4	Solution 4	17
1.2.5	Right moves for the solution to the medium chess puzzle 0039	21
1.2.6	Explanation for the moves	21
1.3	Categories of medium chess puzzle 0039	22
1.4	How to view the solution to medium chess puzzle 0039	22
1.5	How to get help for moves in the medium chess puzzle 0039	23
1.6	Play chess for free	25

List of Figures

1.1	Solve this medium chess puzzle 0039. Mate in 2 moves @ https://gbud.in/gnq3y02	5
1.2	Solve this medium chess puzzle online with solution @ https://gbud.in/gnq3y02	5
1.3	Initial board position of medium chess puzzle 0039	6
1.4	Ra8+ - This is a sacrifice or zugzwang move to deflect the knight from b6	7
1.5	Nc8+ - Knight blocks the check and gives check to you	8
1.6	Rxc8# - Rook captures the knight and checkmate. Rook can not be captured since it is supported by the queen	9
1.7	Initial board position of medium chess puzzle 0039	10
1.8	Ra8+ - This is a sacrifice or zugzwang move to deflect the knight from b6	11
1.9	Nc8+ - Knight blocks the check and gives check to you	12
1.10	Qxc8# - Queen captures the knight and checkmate. Queen can not be captured since it is supported by the rook	13
1.11	Initial board position of medium chess puzzle 0039	14
1.12	Ra8+ - This is a sacrifice or zugzwang move to deflect the knight from b6	15
1.13	Nxa8 - Knight captures the rook	16
1.14	Qd7# - King has no free squares to move and ends in a checkmate	17
1.15	Initial board position of medium chess puzzle 0039	18
1.16	Rd7+ - This is a sacrifice move	19
1.17	Nxd7 - Knight captures the rook	20
1.18	Qxd7# - King has no free squares to move and ends in a checkmate	21
1.19	Click the solution button to view solutions @ https://gbud.in/gnq3y02	23
1.20	Click the help button to get help on next move @ https://gbud.in/gnq3y02	24
1.21	Solve more medium puzzles @ https://gbud.in/chsmdpz	24

1.22	Solve other puzzles @ https://gbud.in/chsgppz	24
1.23	Play chess online for free. Solve puzzles and play with friends	25
1.24	Solve this puzzle online by scanning this QR code or go to the link below	26

Chapter 1

Medium Chess puzzle # 0039 - Mate in 2 moves

Solve this medium chess puzzle and improve your chess games through improvement of your chess strategies and chess tactics.

Puzzle No : 0039

Difficulty level : medium

Description : Mate in 2 moves

Next Move : White

Player level : Intermediate

Short URL for puzzle : <https://gbud.in/gnq3y02>

1.1 Medium chess puzzle 0039

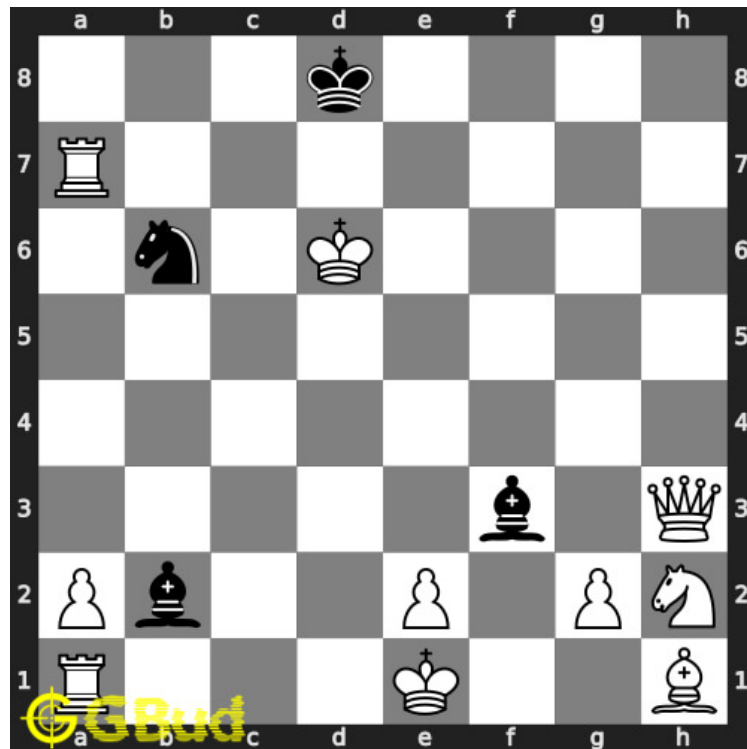


Figure 1.1: Solve this medium chess puzzle 0039. Mate in 2 moves @ <https://gbud.in/gnq3y02>



Figure 1.2: Solve this medium chess puzzle online with solution @ <https://gbud.in/gnq3y02>

1.2 Solution to medium chess puzzle 0039

At this puzzle, next **move** is by **White**. The objective of the puzzle is to mate in 2 moves.

See the interactive solution at the [puzzle page](#)

1.2.1 Solution 1

1.2.1.1 Initial board position

This is the initial board position of medium chess puzzle 0039.

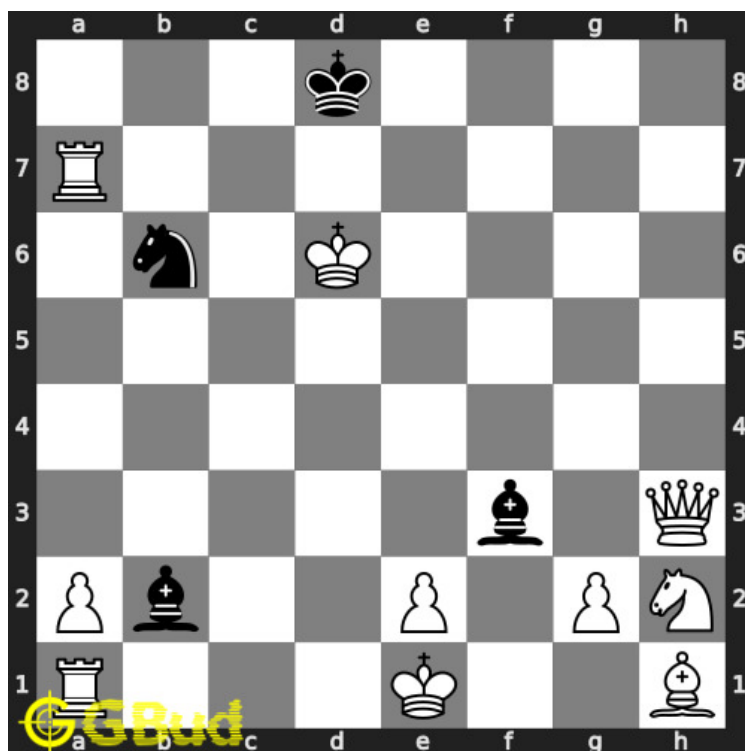


Figure 1.3: Initial board position of medium chess puzzle 0039

1.2.1.2 Move 1

Move by white

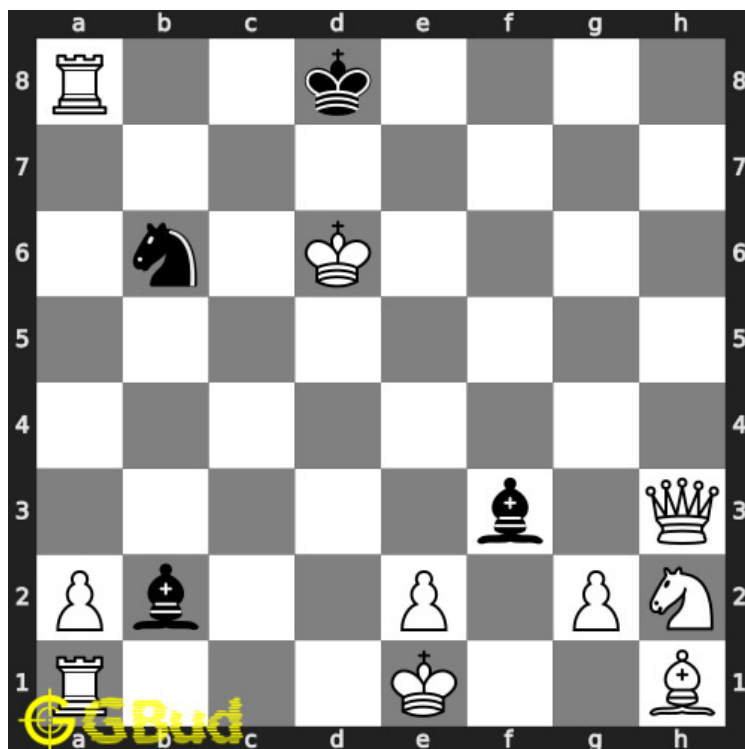


Figure 1.4: Ra8+ - This is a sacrifice or zugzwang move to deflect the knight from b6

1.2.1.3 Move 2

Move by black

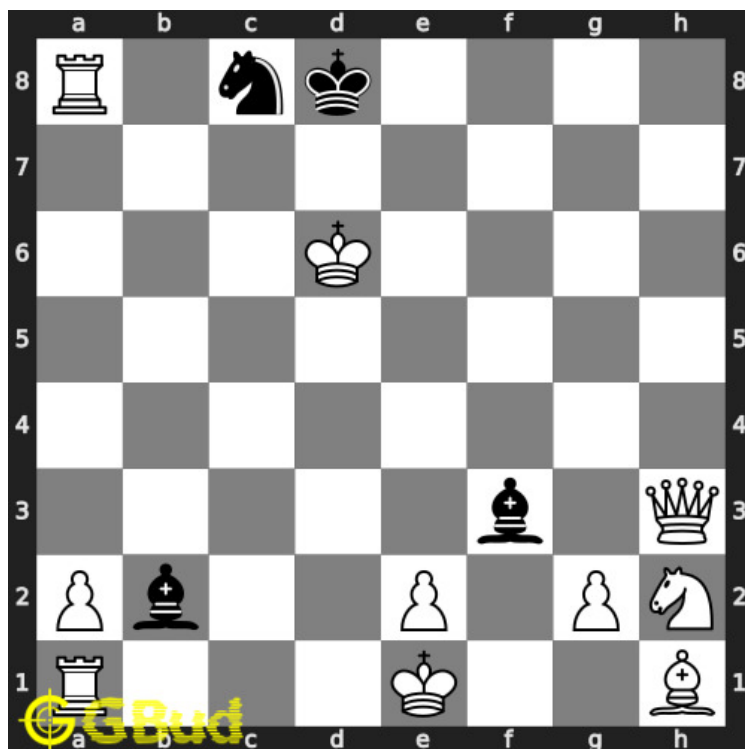


Figure 1.5: Nc8+ - Knight blocks the check and gives check to you

1.2.1.4 Move 3

Move by white

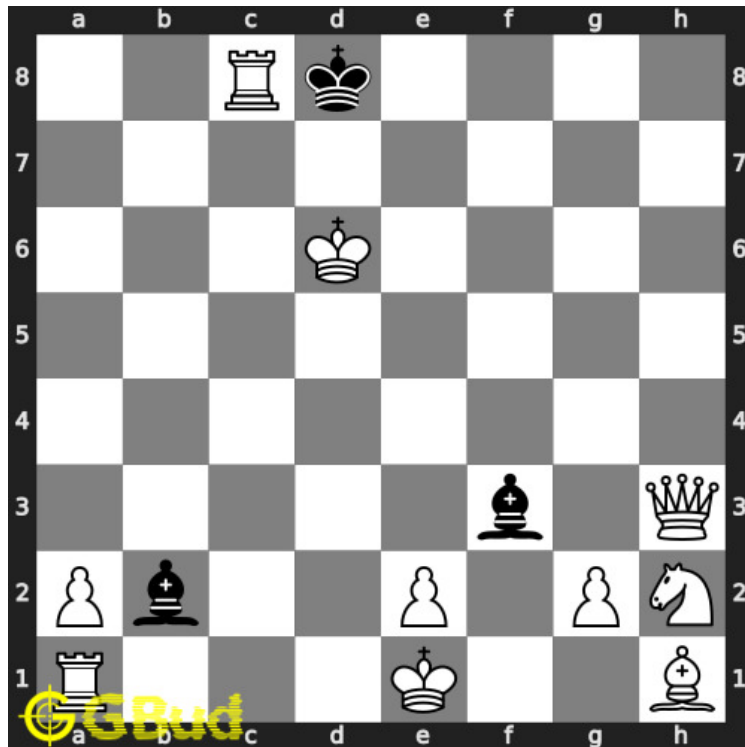


Figure 1.6: Rxc8# - Rook captures the knight and checkmate. Rook can not be captured since it is supported by the queen

1.2.2 Solution 2

1.2.2.1 Initial board position

This is the initial board position of medium chess puzzle 0039.

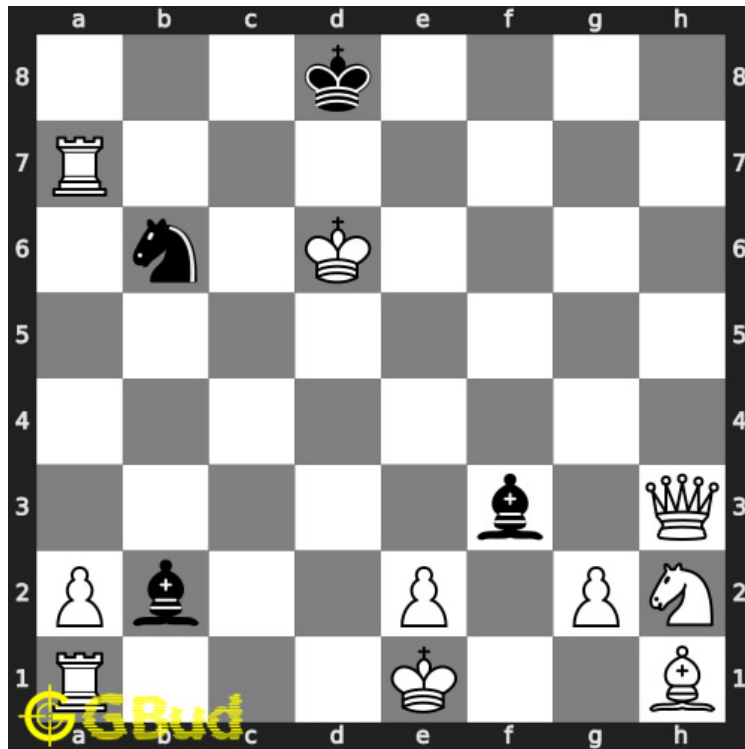


Figure 1.7: Initial board position of medium chess puzzle 0039

1.2.2.2 Move 1

Move by white

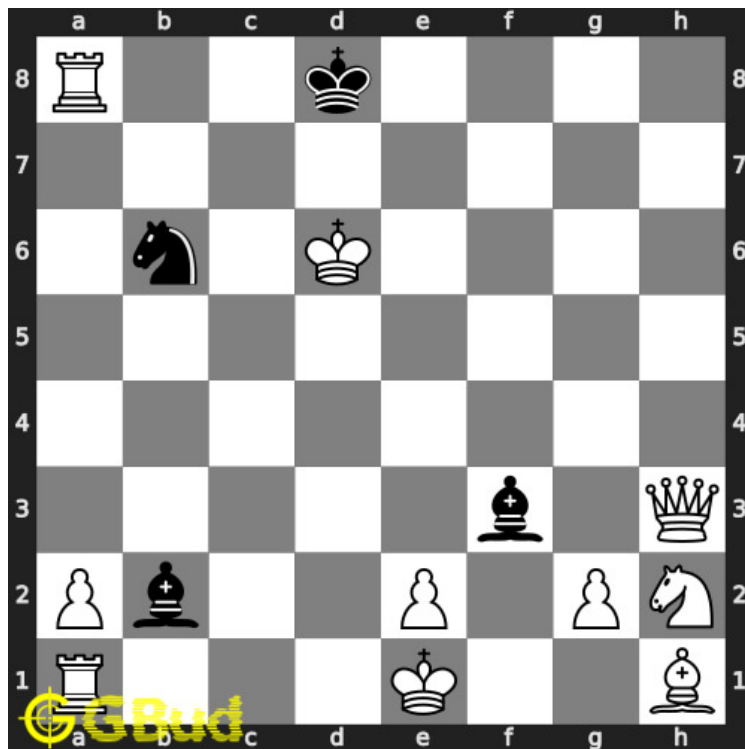


Figure 1.8: Ra8+ - This is a sacrifice or zugzwang move to deflect the knight from b6

1.2.2.3 Move 2

Move by black

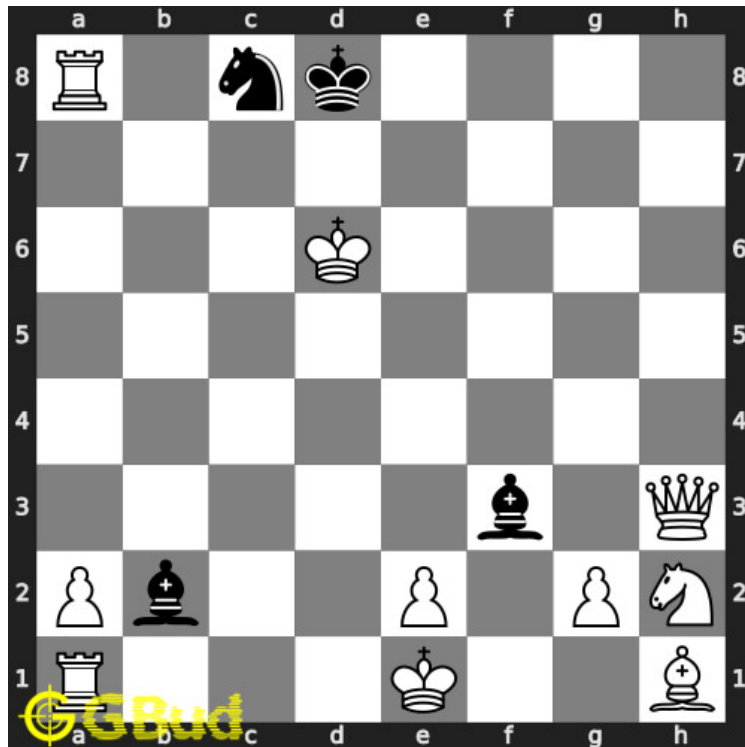


Figure 1.9: Nc8+ - Knight blocks the check and gives check to you

1.2.2.4 Move 3

Move by white

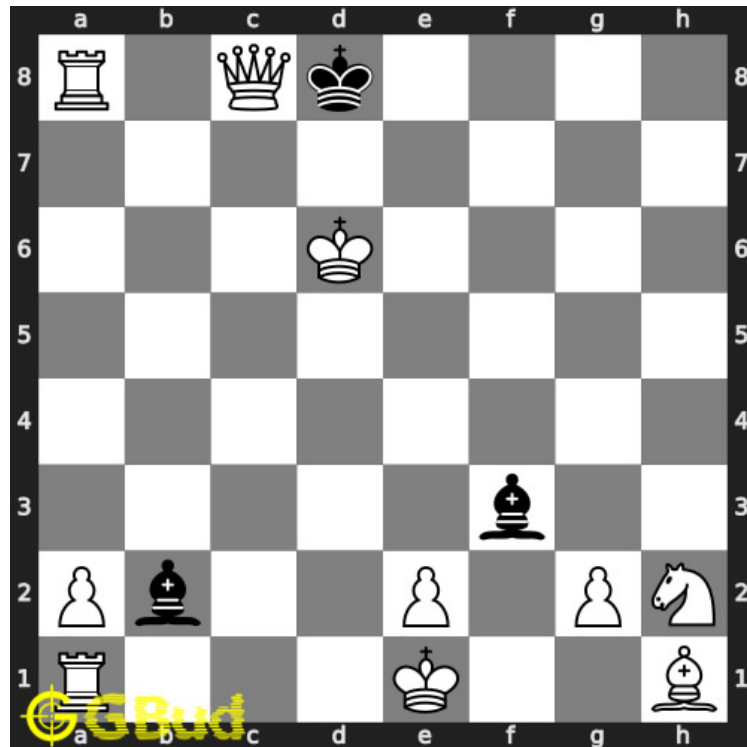


Figure 1.10: Qxc8# - Queen captures the knight and checkmate. Queen can not be captured since it is supported by the rook

1.2.3 Solution 3

1.2.3.1 Initial board position

This is the initial board position of medium chess puzzle 0039.

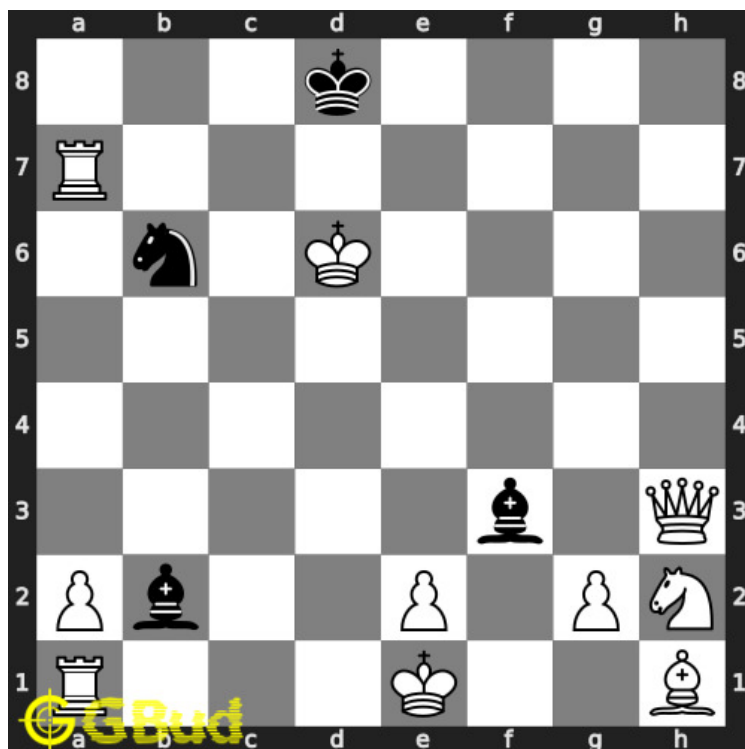


Figure 1.11: Initial board position of medium chess puzzle 0039

1.2.3.2 Move 1

Move by white

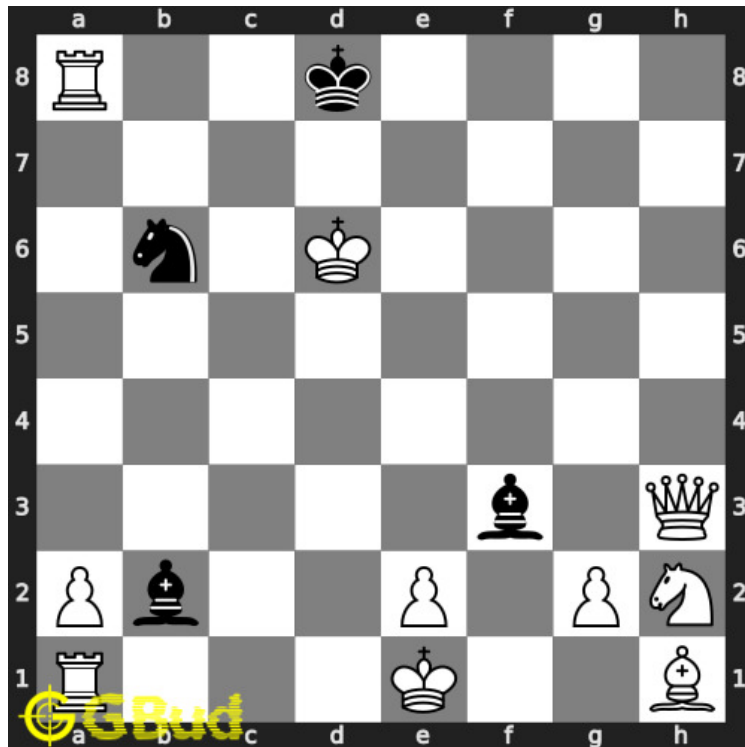


Figure 1.12: Ra8+ - This is a sacrifice or zugzwang move to deflect the knight from b6

1.2.3.3 Move 2

Move by black

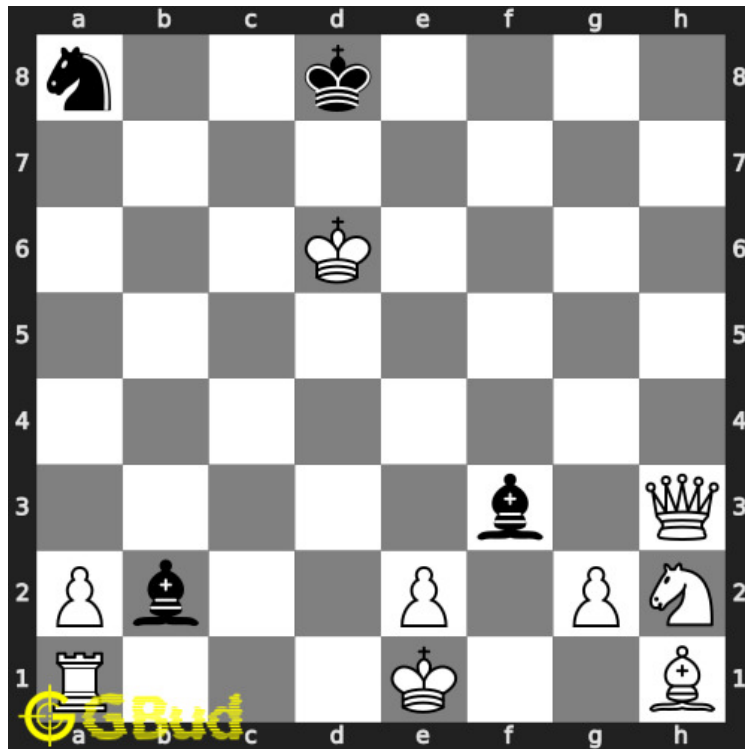


Figure 1.13: Nxa8 - Knight captures the rook

1.2.3.4 Move 3

Move by white

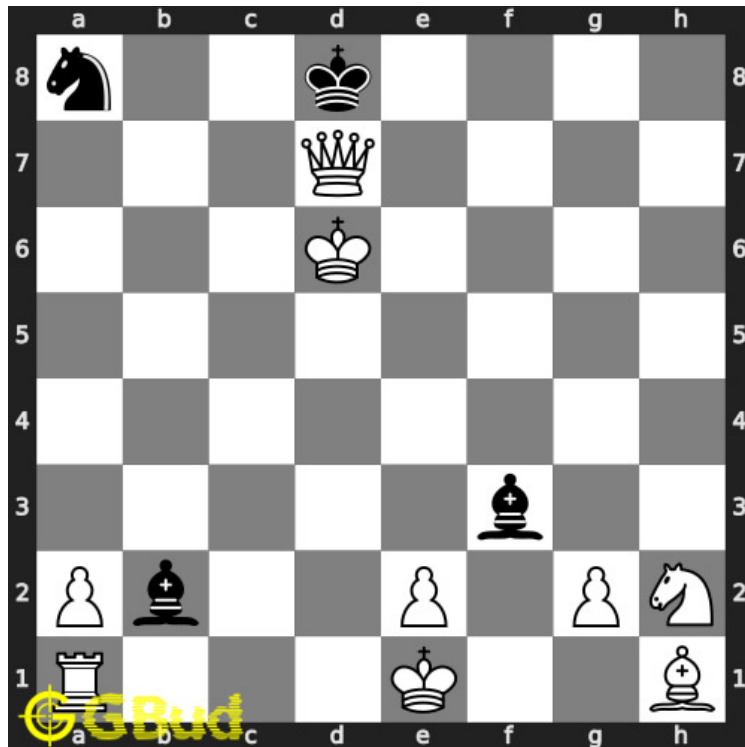


Figure 1.14: Qd7# - King has no free squares to move and ends in a checkmate

1.2.4 Solution 4

1.2.4.1 Initial board position

This is the initial board position of medium chess puzzle 0039.

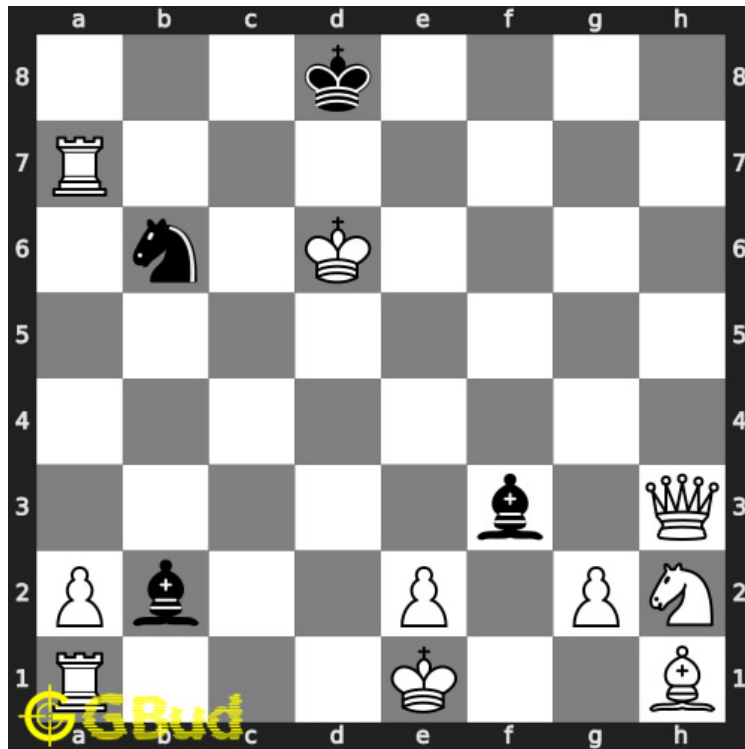


Figure 1.15: Initial board position of medium chess puzzle 0039

1.2.4.2 Move 1

Move by white

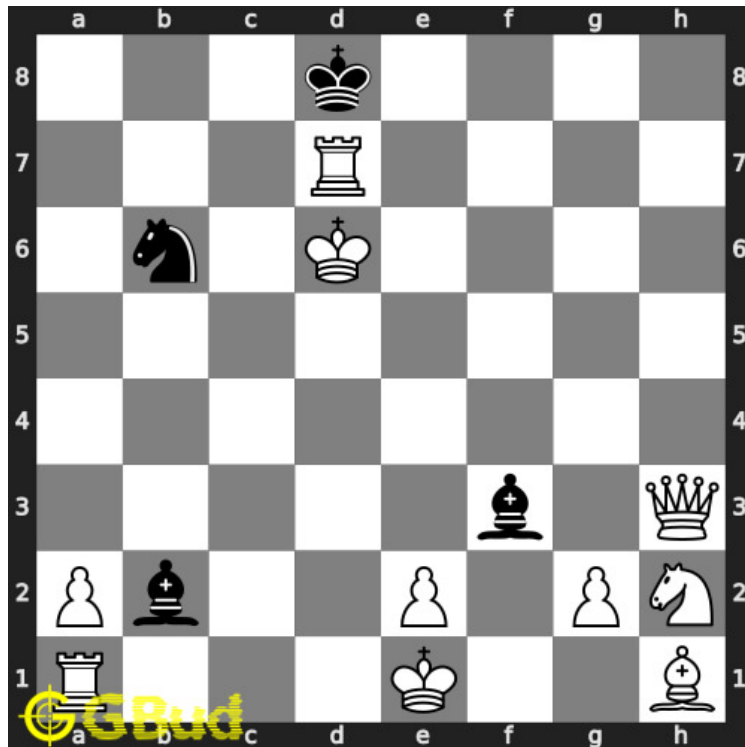


Figure 1.16: Rd7+ - This is a sacrifice move

1.2.4.3 Move 2

Move by black

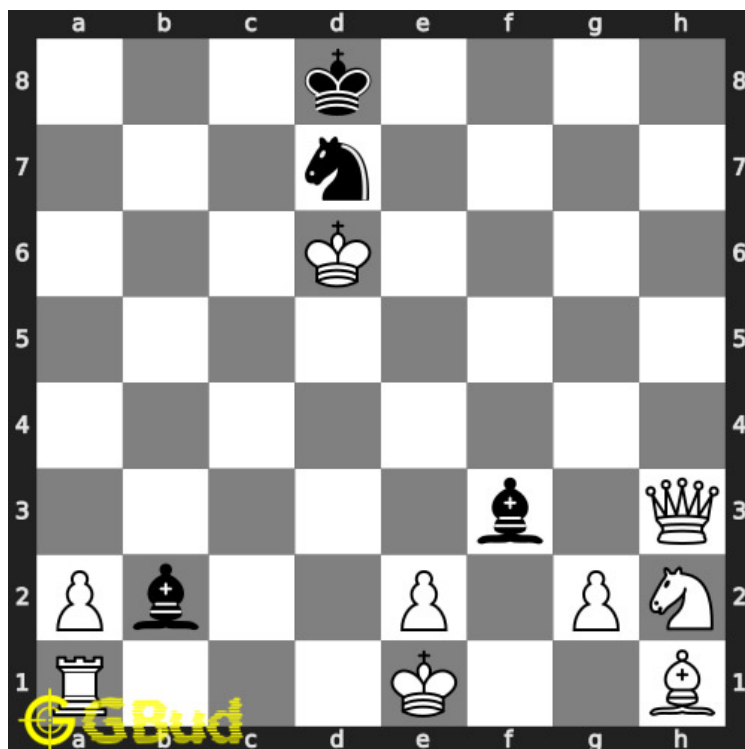


Figure 1.17: Nxd7 - Knight captures the rook

1.2.4.4 Move 3

Move by white

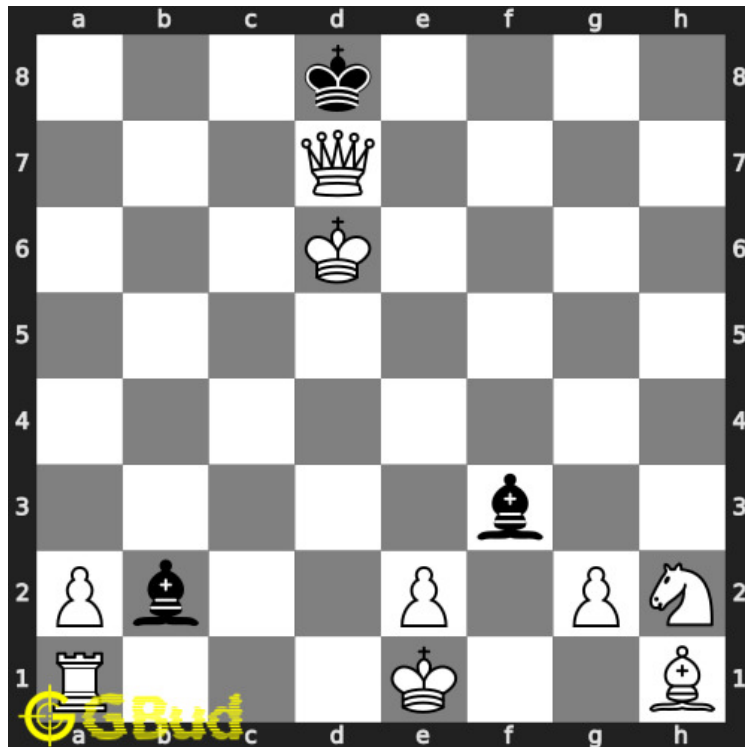


Figure 1.18: Qxd7# - King has no free squares to move and ends in a checkmate

1.2.5 Right moves for the solution to the medium chess puzzle 0039

Based on the objective of the puzzle, you have to make the right moves. Following are the right moves

1. Ra8+, Rxc8#
2. Ra8+, Qxc8#
3. Ra8+, Qd7#
4. Rd7+, Qxd7#

1.2.6 Explanation for the moves

1. Ra8+ - This is a sacrifice or zugzwang move to deflect the knight from b6
2. Rxc8# - Rook captures the knight and checkmate. Rook can not be captured since it is supported by the queen
3. Qxc8# - Queen captures the knight and checkmate. Queen can not be captured since it is supported by the rook
4. Qd7# - King has no free squares to move and ends in a checkmate

5. Qxd7# - King has no free squares to move and ends in a checkmate
6. Rd7+ - This is a sacrifice move
7. Nc8+ - Knight blocks the check and gives check to you
8. Nxa8 - Knight captures the rook
9. Nxd7 - Knight captures the rook
10. For right move - You have given the best moves. Keep winning
11. For wrong move - You should have utilised the power of queen and rook. Try again

1.3 Categories of medium chess puzzle 0039

This medium chess puzzle falls in these categories.

1. [Medium chess puzzles](#)
2. [Sacrifice puzzles in chess](#)
3. [Mate in 2 puzzles in chess](#)
4. [Endgame puzzles in chess](#)
5. [Strategy puzzles in chess](#)
6. [Zugzwang puzzles in chess](#)

1.4 How to view the solution to medium chess puzzle 0039

To view the [solution to this puzzle](#), follow the steps given below

1. Go to the [puzzle page](#)
2. Click the solution button (Key as shown [below](#)) to view the solution



Figure 1.19: Click the solution button to view solutions @ <https://gbud.in/gnq3y02>

1.5 How to get help for moves in the medium chess puzzle 0039

To get help or the possible next moves in the puzzle, , follow the steps given below

1. Go to the [puzzle page](#)
2. Click the help button (exclamation mark as shown [below](#)) to get help or suggestion on next possible [move](#)



Figure 1.20: Click the help button to get help on next move @ <https://gbud.in/gnq3y02>



Figure 1.21: Solve more medium puzzles @ <https://gbud.in/chsmdpz>



Figure 1.22: Solve other puzzles @ <https://gbud.in/chsgppz>

1.6 Play chess for free



Figure 1.23: Play chess online for free. Solve puzzles and play with friends

Play chess for free at <https://gbud.in/chs>

We present you a platform to [play chess online with friends for free](#). No need to install any app. You can [play chess for free without registration or login](#).

Simple. You can do several chess related activities.

1. [solve chess puzzles](#)
2. [learn about chess](#)
3. [play chess with computer](#)
4. [play chess with friend](#)
5. [create your own chess games](#)
6. [fen viewer](#)
7. [fen editor](#)
8. [fen generator](#)
9. [pgn viewer](#)
10. [chess board editor](#)
11. [view famous chess games](#).



Figure 1.24: Solve this puzzle online by scanning this QR code or go to the link below

<https://gbud.in/gnq3y02>

Read the latest article on Medium Chess puzzle # 0039 - Mate in 2 moves by scanning this QR code or click the link

Previous article : [« Medium Chess puzzle # 0038 - Avoid checkmate in one move](#)

Next article : [Medium Chess puzzle # 0040 - Mate in 2 moves »](#)

[Back to top](#)

[Contact Us](#)

© GBud Games 2021