



Medium Chess Puzzle # 0038

By

G Bud Games
<https://gbud.in>

October 10, 2021

Contents

Medium Chess puzzle # 0038 - Avoid checkmate in one move	3
Medium chess puzzle 0038	3
Solution to medium chess puzzle 0038	4
Solution 1	4
Right moves for the solution to the medium chess puzzle 0038	5
Explanation for the moves	5
Categories of medium chess puzzle 0038	5
How to view the solution to medium chess puzzle 0038	6
How to get help for moves in the medium chess puzzle 0038	6
Play chess for free	8

List of Figures

1	Solve this medium chess puzzle 0038. Avoid checkmate in one move @ https://gbud.in/gb49212	3
2	Solve this medium chess puzzle online with solution @ https://gbud.in/gb49212	3
3	Initial board position of medium chess puzzle 0038	4
4	O-O - This king side castling provides the additional support from rook to f2. Now even if f2 is attacked, you can capture the attacking pice with the rook and king can safely move to h1	5
5	Click the solution button to view solutions @ https://gbud.in/gb49212	6
6	Click the help button to get help on next move @ https://gbud.in/gb49212	7
7	Solve more medium puzzles @ https://gbud.in/chsmdpz	7
8	Solve other puzzles @ https://gbud.in/chsgppz	7
9	Play chess online for free. Solve puzzles and play with friends	8
10	Solve this puzzle online by scanning this QR code or go to the link below	9

Medium Chess puzzle # 0038 - Avoid checkmate in one move

Solve this medium chess puzzle and improve your chess games through improvement of your chess strategies and chess tactics.

Puzzle No : 0038

Difficulty level : medium

Description : Avoid checkmate in one move

Next Move : White

Player level : Intermediate

Short URL for puzzle : <https://gbud.in/gb49212>

Medium chess puzzle 0038

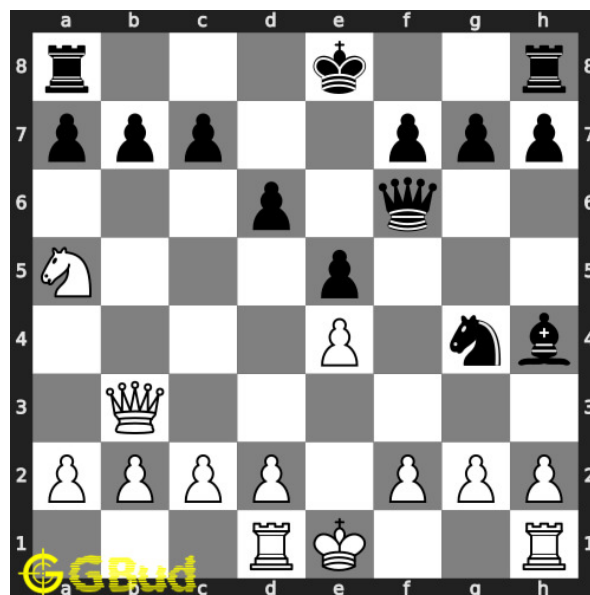


Figure 1: Solve this medium chess puzzle 0038. Avoid checkmate in one move @ <https://gbud.in/gb49212>



Figure 2: Solve this medium chess puzzle online with solution @ <https://gbud.in/gb49212>

Solution to medium chess puzzle 0038

At this puzzle, next **move** is by **White**. The objective of the puzzle is to avoid checkmate in one move.

See the interactive solution at the [puzzle page](#)

Solution 1

Initial board position This is the initial board position of medium chess puzzle 0038.

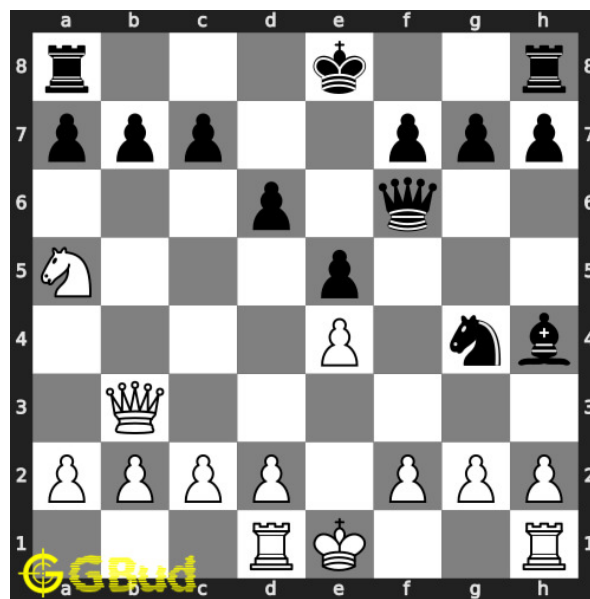


Figure 3: Initial board position of medium chess puzzle 0038

Move 1 Move by white

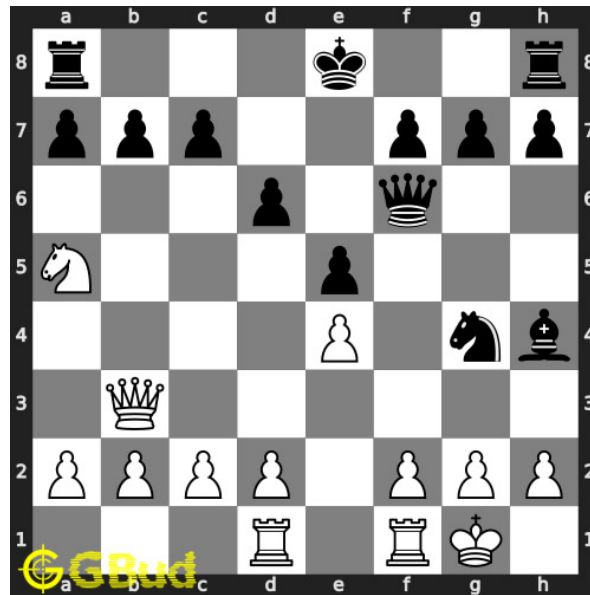


Figure 4: O-O - This king side castling provides the additional support from rook to f2. Now even if f2 is attacked, you can capture the attacking piece with the rook and king can safely move to h1

Right moves for the solution to the medium chess puzzle 0038

Based on the objective of the puzzle, you have to make the right moves. Following are the right moves

1. O-O

Explanation for the moves

1. O-O - This king side castling provides the additional support from rook to f2. Now even if f2 is attacked, you can capture the attacking piece with the rook and king can safely move to h1
2. For right move - Your king side castling is a wise move that avoids the immediate checkmate
3. For wrong move - You could have castled and given additional protection to f2. Now the queen will checkmate

Categories of medium chess puzzle 0038

This medium chess puzzle falls in these categories.

1. [Medium chess puzzles](#)
2. [Endgame puzzles in chess](#)

3. [Avoid checkmate puzzles in chess](#)
4. [Strategy puzzles in chess](#)

How to view the solution to medium chess puzzle 0038

To view the [solution to this puzzle](#), follow the steps given below

1. Go to the [puzzle page](#)
2. Click the solution button (Key as shown [below](#)) to view the solution



Figure 5: Click the solution button to view solutions @ <https://gbud.in/gb49212>

How to get help for moves in the medium chess puzzle 0038

To get help or the possible next moves in the puzzle, , follow the steps given below

1. Go to the [puzzle page](#)
2. Click the help button (exclamation mark as shown [below](#)) to get help or suggestion on next possible [move](#)



Figure 6: Click the help button to get help on next move @ <https://gbud.in/gb49212>



Figure 7: Solve more medium puzzles @ <https://gbud.in/chsmdpz>



Figure 8: Solve other puzzles @ <https://gbud.in/chsgppz>

Play chess for free

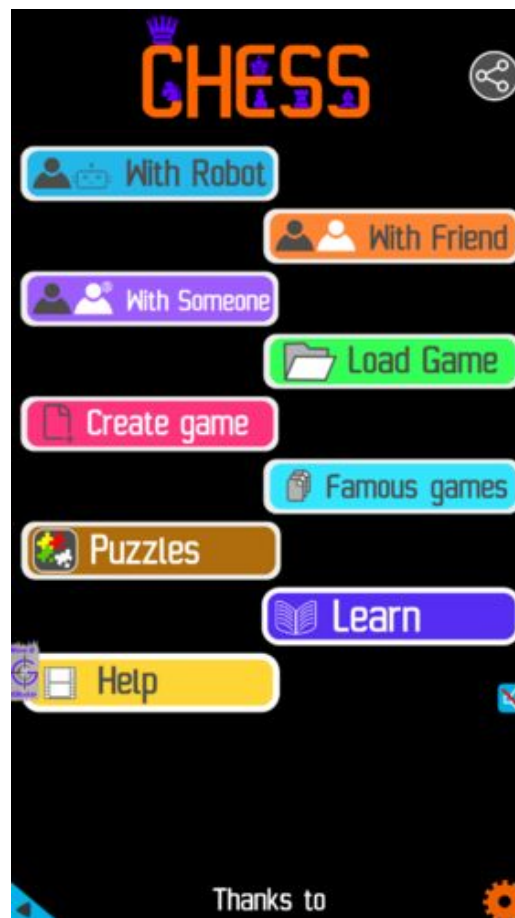


Figure 9: Play chess online for free. Solve puzzles and play with friends

Play chess for free at <https://gbud.in/chs>

We present you a platform to play chess online with friends for free. No need to install any app. You can play chess for free without registration or login.

Simple. You can do several chess related activities.

1. [solve chess puzzles](#)
2. [learn about chess](#)
3. [play chess with computer](#)
4. [play chess with friend](#)
5. [create your own chess games](#)
6. [fen viewer](#)
7. [fen editor](#)
8. [fen generator](#)
9. [pgn viewer](#)
10. [chess board editor](#)

11. [view famous chess games.](#)



Figure 10: Solve this puzzle online by scanning this QR code or go to the link below

<https://gbud.in/gb49212>

Read the latest article on Medium Chess puzzle # 0038 - Avoid checkmate in one move by scanning this QR code or click the link

Previous article : [« Medium Chess puzzle # 0037 - Will you capture the hanging bishop?](#)

Next article : [Medium chess puzzles »](#)

[Back to top](#)

[Contact Us](#)

© GBud Games 2021