



## Medium Chess Puzzle # 0036

By

G Bud Games  
<https://gbud.in>

October 8, 2021

## Contents

<b>Medium Chess puzzle # 0036 - Gain a piece</b>	<b>3</b>
Medium chess puzzle 0036 . . . . .	3
Solution to medium chess puzzle 0036 . . . . .	4
Solution 1 . . . . .	4
Right moves for the solution to the medium chess puzzle 0036	7
Explanation for the moves . . . . .	7
Categories of medium chess puzzle 0036 . . . . .	8
How to view the solution to medium chess puzzle 0036 . . . . .	8
How to get help for moves in the medium chess puzzle 0036 . . . . .	9
Play chess for free . . . . .	10

## List of Figures

1	Solve this medium chess puzzle 0036. Gain a piece @ <a href="https://gbud.in/g6wyks2">https://gbud.in/g6wyks2</a> . . . . .	3
2	Solve this medium chess puzzle online with solution @ <a href="https://gbud.in/g6wyks2">https://gbud.in/g6wyks2</a> . . . . .	3
3	Initial board position of medium chess puzzle 0036 . . . . .	4
4	e4 - This is a pawn fork since the pawn attacks the knight and queen at the same time. This is also a decoy move since this opens the diagonal for the bishop . . . . .	5
5	Qxe4 - Queen fell into your trap set by the decoy move. Your opponent has not realised that this is a decoy move . . . . .	5
6	Ba3+ - This check is a discovered attack for the rook to queen. This forces the king to move so that the queen can not escape from the threat of your rook . . . . .	6
7	Kb1 - King escapes from the check . . . . .	6
8	Rxe4 - Rook captures the hanging queen which means it is not supported . . . . .	7
9	Click the solution button to view solutions @ <a href="https://gbud.in/g6wyks2">https://gbud.in/g6wyks2</a> . . . . .	8
10	Click the help button to get help on next move @ <a href="https://gbud.in/g6wyks2">https://gbud.in/g6wyks2</a> . . . . .	9
11	Solve more medium puzzles @ <a href="https://gbud.in/chsmdpz">https://gbud.in/chsmdpz</a> . . . . .	9
12	Solve other puzzles @ <a href="https://gbud.in/chsgppz">https://gbud.in/chsgppz</a> . . . . .	9
13	Play chess online for free. Solve puzzles and play with friends	10
14	Solve this puzzle online by scanning this QR code or go to the link below . . . . .	11

## Medium Chess puzzle # 0036 - Gain a piece

Solve this medium chess puzzle and improve your chess games through improvement of your chess strategies and chess tactics.

Puzzle No : 0036

Difficulty level : medium

Description : Gain a piece

Next Move : Black

Player level : Intermediate

Short URL for puzzle : <https://gbud.in/g6wyks2>

### Medium chess puzzle 0036

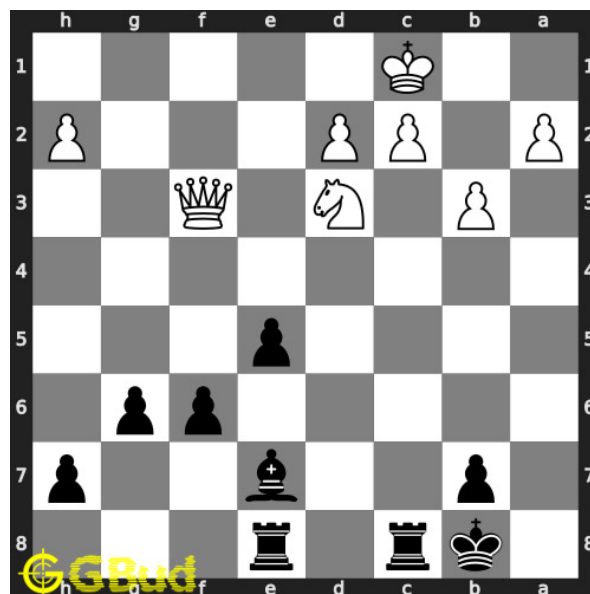


Figure 1: Solve this medium chess puzzle 0036. Gain a piece @ <https://gbud.in/g6wyks2>



Figure 2: Solve this medium chess puzzle online with solution @ <https://gbud.in/g6wyks2>

## Solution to medium chess puzzle 0036

At this puzzle, next **move** is by **Black**. The objective of the puzzle is to gain a piece.

See the interactive solution at the [puzzle page](#)

### Solution 1

**Initial board position** This is the initial board position of medium chess puzzle 0036.

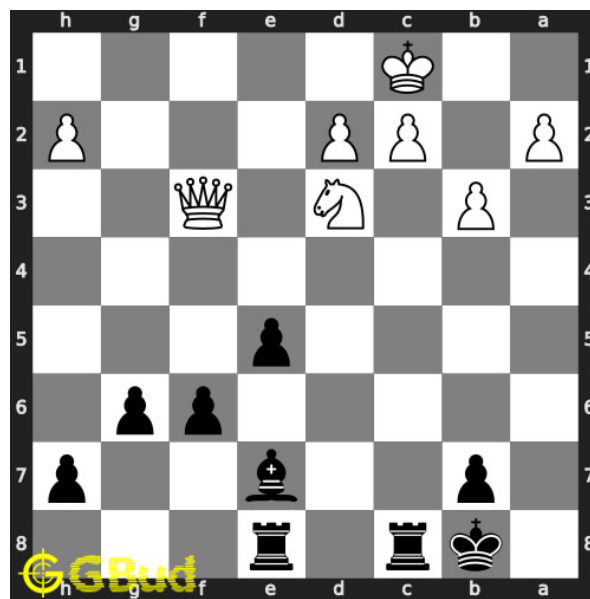


Figure 3: Initial board position of medium chess puzzle 0036

**Move 1** Move by black

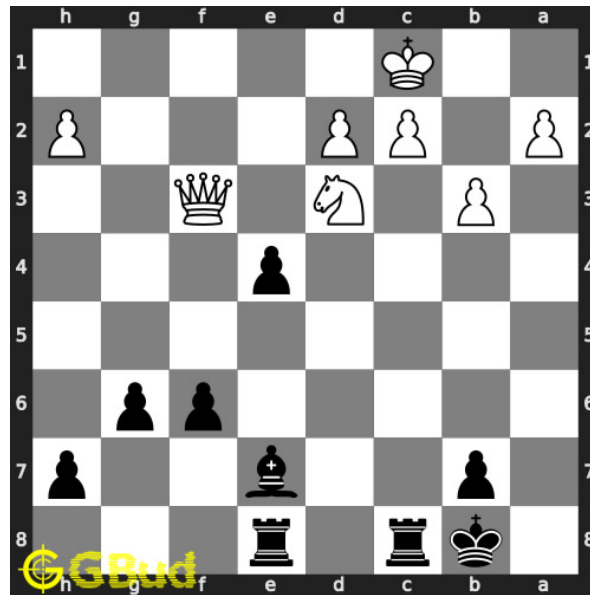


Figure 4: e4 - This is a pawn fork since the pawn attacks the knight and queen at the same time. This is also a decoy move since this opens the diagonal for the bishop

**Move 2** Move by white

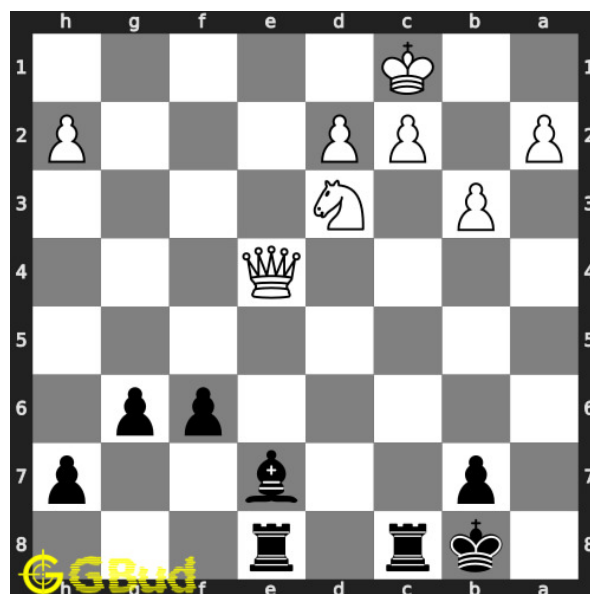


Figure 5: Qxe4 - Queen fell into your trap set by the decoy move. Your opponent has not realised that this is a decoy move

**Move 3** Move by black

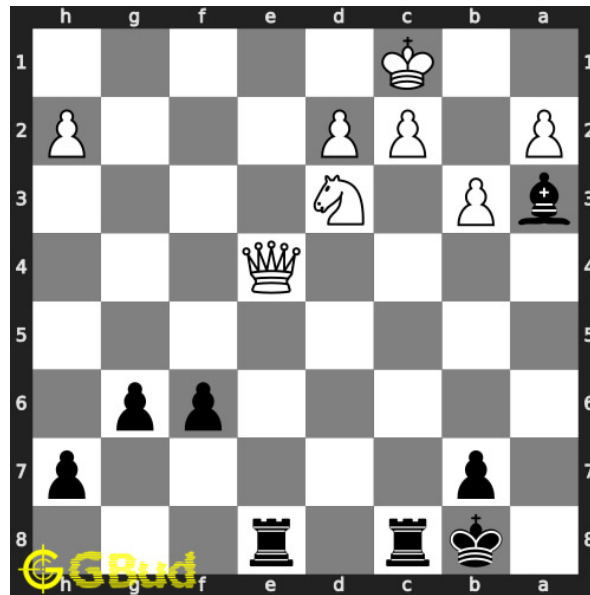


Figure 6: Ba3+ - This check is a discovered attack for the rook to queen. This forces the king to move so that the queen can not escape from the threat of your rook

**Move 4** Move by white

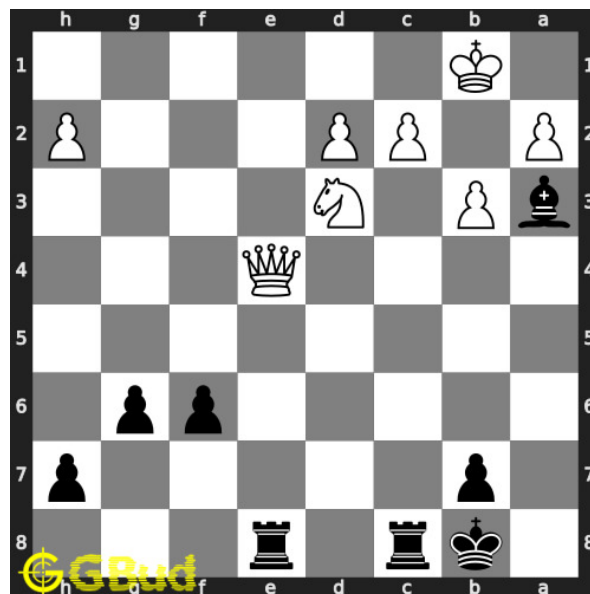


Figure 7: Kb1 - King escapes from the check

**Move 5** Move by black

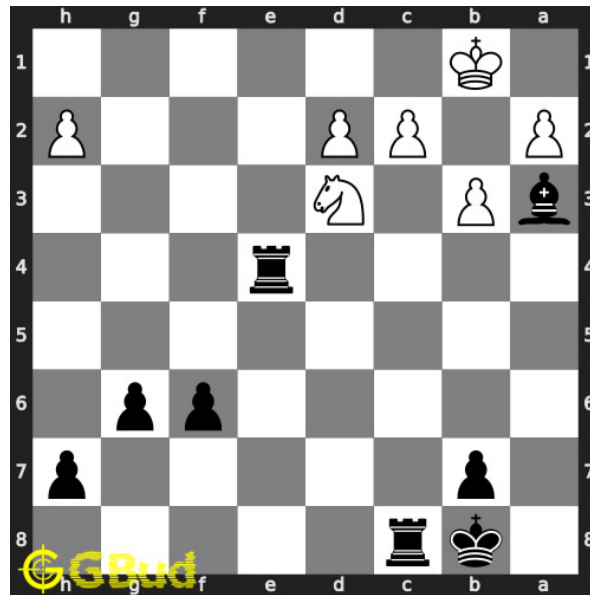


Figure 8: Rxe4 - Rook captures the hanging queen which means it is not supported

### Right moves for the solution to the medium chess puzzle 0036

Based on the objective of the puzzle, you have to make the right moves. Following are the right moves

1. e4, Ba3+, Rxe4

### Explanation for the moves

1. e4 - This is a pawn fork since the pawn attacks the knight and queen at the same time. This is also a decoy move since this opens the diagonal for the bishop
2. Ba3+ - This check is a discovered attack for the rook to queen. This forces the king to move so that the queen can not escape from the threat of your rook
3. Rxe4 - Rook captures the hanging queen which means it is not supported
4. Qxe4 - Queen fell into your trap set by the decoy move. Your opponent has not realised that this is a decoy move
5. Kb1 - King escapes from the check
6. For right move - You combined fork and decoy move to gain the queen. Good strategy
7. For wrong move - You could have moved your pawn and gained the queen after giving a check. Do not stop trying

## Categories of medium chess puzzle 0036

This medium chess puzzle falls in these categories.

1. [Medium chess puzzles](#)
2. [Gain puzzles in chess](#)
3. [Fork puzzles in chess](#)
4. [Decoy puzzles in chess](#)
5. [Strategy puzzles in chess](#)

## How to view the solution to medium chess puzzle 0036

To view the [solution to this puzzle](#), follow the steps given below

1. Go to the [puzzle page](#)
2. Click the solution button (Key as shown [below](#)) to view the solution



Figure 9: Click the solution button to view solutions @ <https://gbud.in/g6wyks2>



## How to get help for moves in the medium chess puzzle 0036

To get help or the possible next moves in the puzzle, , follow the steps given below

1. Go to the [puzzle page](#)
2. Click the help button (exclamation mark as shown [below](#)) to get help or suggestion on next possible [move](#)



Figure 10: Click the help button to get help on next move @ <https://gbud.in/g6wyks2>



Figure 11: Solve more medium puzzles @ <https://gbud.in/chsmdpz>



Figure 12: Solve other puzzles @ <https://gbud.in/chsgppz>

## Play chess for free

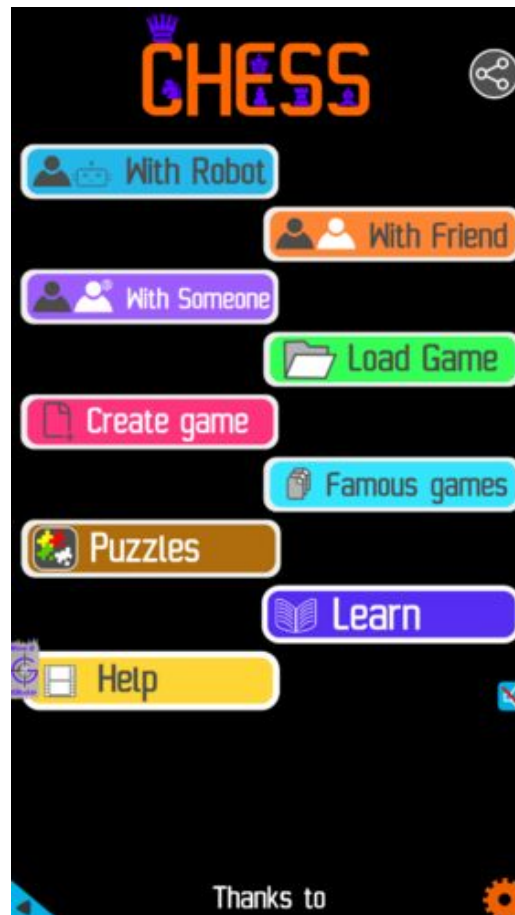


Figure 13: Play chess online for free. Solve puzzles and play with friends

Play chess for free at <https://gbud.in/chs>

We present you a platform to play chess online with friends for free. No need to install any app. You can play chess for free without registration or login.

Simple. You can do several chess related activities.

1. [solve chess puzzles](#)
2. [learn about chess](#)
3. [play chess with computer](#)
4. [play chess with friend](#)
5. [create your own chess games](#)

6. [fen viewer](#)
7. [fen editor](#)
8. [fen generator](#)
9. [pgn viewer](#)
10. [chess board editor](#)
11. [view famous chess games.](#)



Figure 14: Solve this puzzle online by scanning this QR code or go to the link below

<https://gbud.in/g6wyks2>

Read the latest article on Medium Chess puzzle # 0036 - Gain a piece by scanning this QR code or click the link

Previous article : [« Medium Chess puzzle # 0035 - Gain two rooks](#)

Next article : [Medium chess puzzles »](#)

[Back to top](#)

[Contact Us](#)