



Medium Chess Puzzle # 0034

By

G Bud Games
<https://gbud.in>

October 6, 2021

Contents

1	Medium Chess puzzle # 0034 - Gain rook	3
1.1	Medium chess puzzle 0034	4
1.2	Solution to medium chess puzzle 0034	4
1.2.1	Solution 1	5
1.2.2	Solution 2	8
1.2.3	Right moves for the solution to the medium chess puzzle 0034	12
1.2.4	Explanation for the moves	12
1.3	Categories of medium chess puzzle 0034	13
1.4	How to view the solution to medium chess puzzle 0034	13
1.5	How to get help for moves in the medium chess puzzle 0034	14
1.6	Play chess for free	16

List of Figures

1.1	Solve this medium chess puzzle 0034. Gain rook @ https://gbud.in/g9jj2j2	4
1.2	Solve this medium chess puzzle online with solution @ https://gbud.in/g9jj2j2	4
1.3	Initial board position of medium chess puzzle 0034	5
1.4	e1=Q+ - Pawn is promoted to a queen and gives check to the opponents king. The piece is sacrificed to gain the rook	6
1.5	Rxe1 - The rook captures your promoted piece to escape from the check	7
1.6	Rxe1+ - You have lost a promoted piece, but gained a rook. Now you can promote the pawn in d file and have a better chance in winning the game	8
1.7	Initial board position of medium chess puzzle 0034	9
1.8	e1=R+ - Pawn is promoted to a rook and gives check to the opponents king. The piece is sacrificed to gain the rook	10
1.9	Rxe1 - The rook captures your promoted piece to escape from the check	11
1.10	Rxe1+ - You have lost a promoted piece, but gained a rook. Now you can promote the pawn in d file and have a better chance in winning the game	12
1.11	Click the solution button to view solutions @ https://gbud.in/g9jj2j2	14
1.12	Click the help button to get help on next move @ https://gbud.in/g9jj2j2	15
1.13	Solve more medium puzzles @ https://gbud.in/chsmdpz	15
1.14	Solve other puzzles @ https://gbud.in/chsgppz	15
1.15	Play chess online for free. Solve puzzles and play with friends	16
1.16	Solve this puzzle online by scanning this QR code or go to the link below	17

Chapter 1

Medium Chess puzzle # 0034 - Gain rook

Solve this medium chess puzzle and improve your chess games through improvement of your chess strategies and chess tactics.

Puzzle No : 0034

Difficulty level : medium

Description : Gain rook

Next Move : Black

Player level : Intermediate

Short URL for puzzle : <https://gbud.in/g9jj2j2>

1.1 Medium chess puzzle 0034

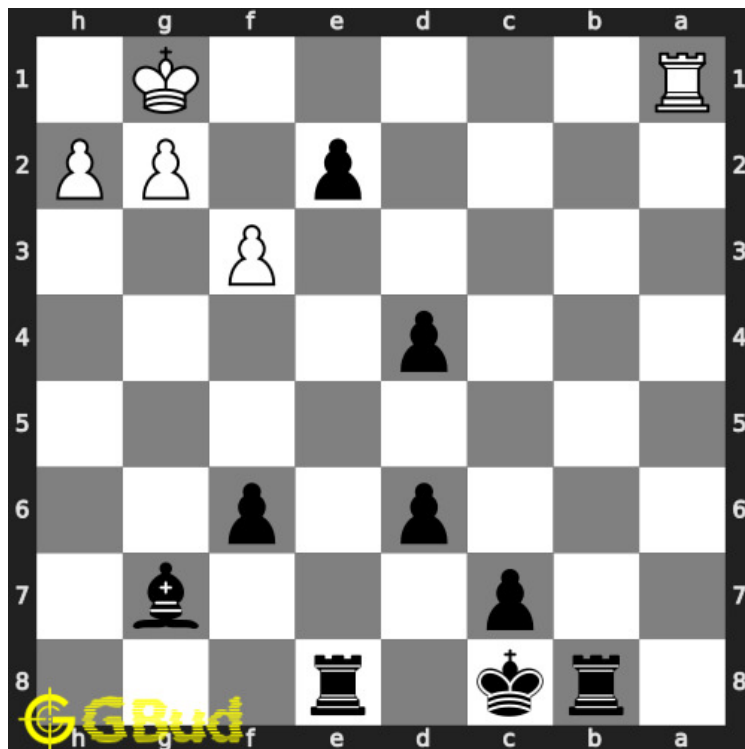


Figure 1.1: Solve this medium chess puzzle 0034. Gain rook @ <https://gbud.in/g9jj2j2>



Figure 1.2: Solve this medium chess puzzle online with solution @ <https://gbud.in/g9jj2j2>

1.2 Solution to medium chess puzzle 0034

At this puzzle, next [move](#) is by [Black](#). The objective of the puzzle is to gain rook.

See the interactive solution at the [puzzle page](#)

1.2.1 Solution 1

1.2.1.1 Initial board position

This is the initial board position of medium chess puzzle 0034.

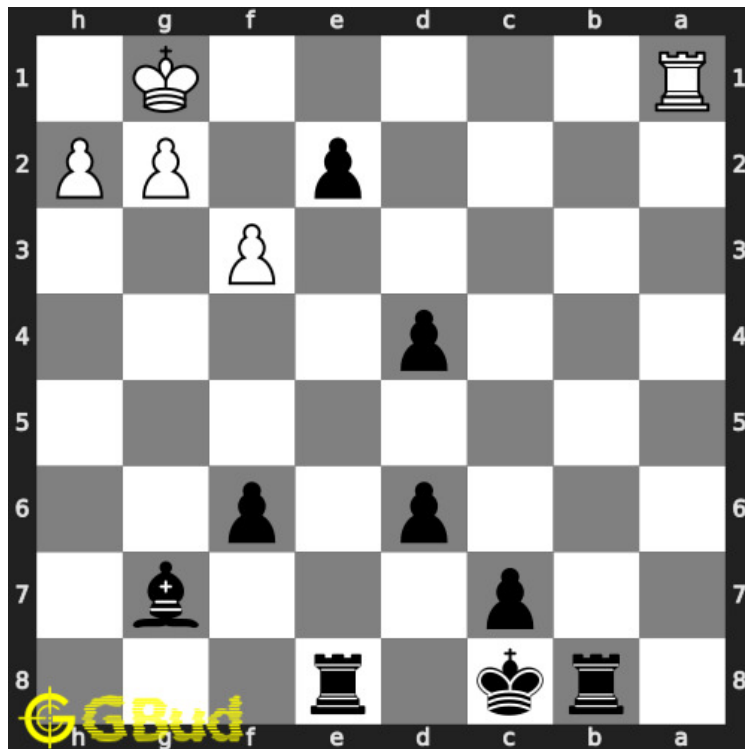


Figure 1.3: Initial board position of medium chess puzzle 0034

1.2.1.2 Move 1

Move by black

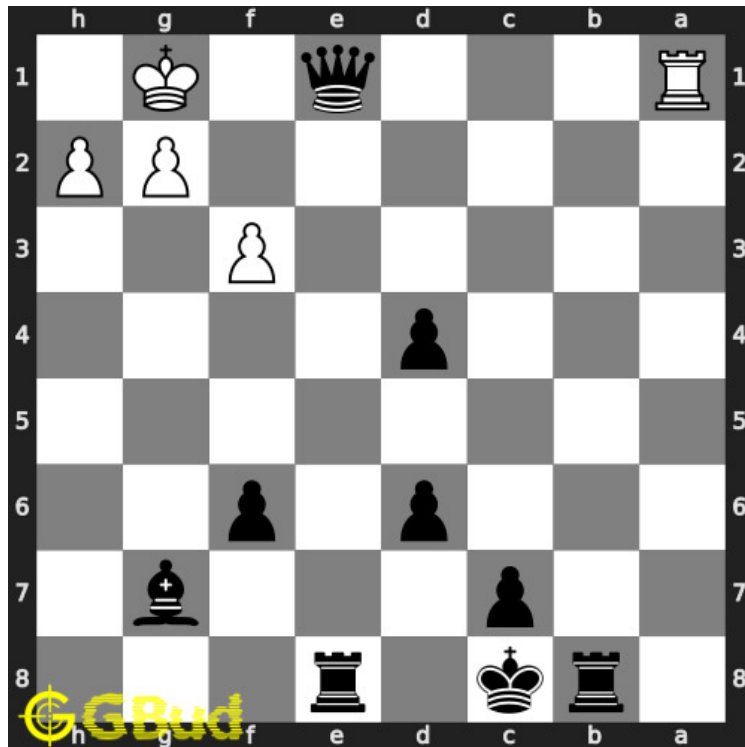


Figure 1.4: e1=Q+ - Pawn is promoted to a queen and gives check to the opponents king. The piece is sacrificed to gain the rook

1.2.1.3 Move 2

Move by white

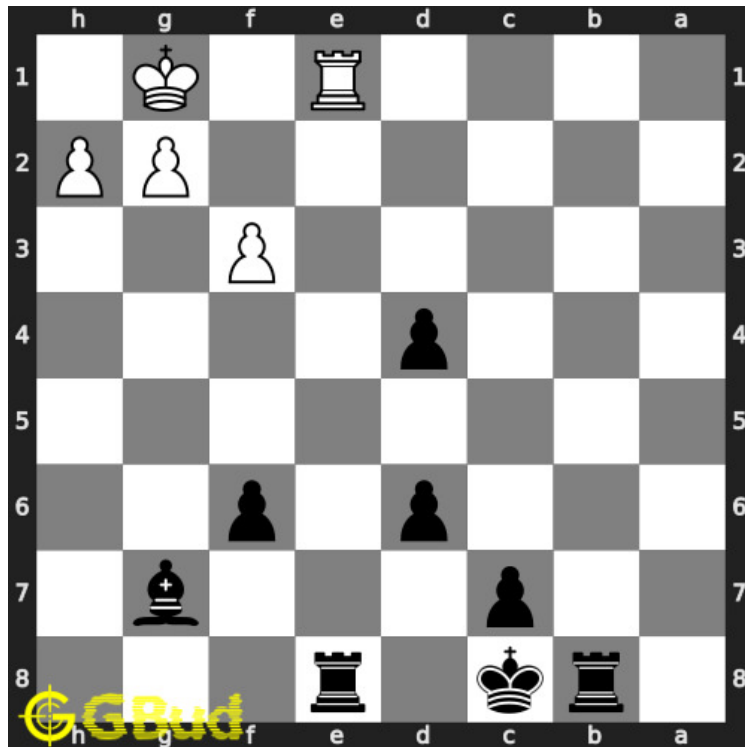


Figure 1.5: Rxe1 - The rook captures your promoted piece to escape from the check

1.2.1.4 Move 3

Move by black

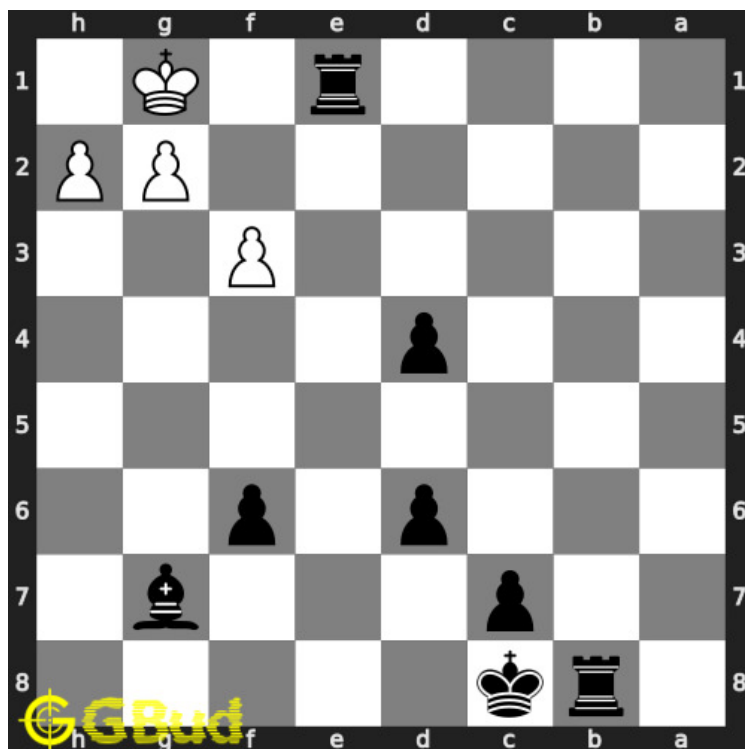


Figure 1.6: Rxe1+ - You have lost a promoted piece, but gained a rook. Now you can promote the pawn in d file and have a better chance in winning the game

1.2.2 Solution 2

1.2.2.1 Initial board position

This is the initial board position of medium chess puzzle 0034.

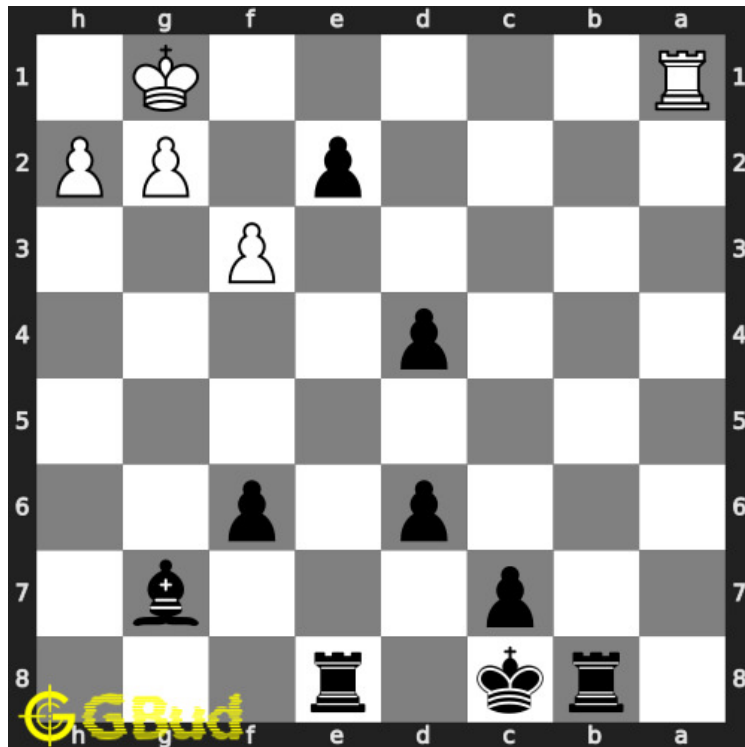


Figure 1.7: Initial board position of medium chess puzzle 0034

1.2.2.2 Move 1

Move by black

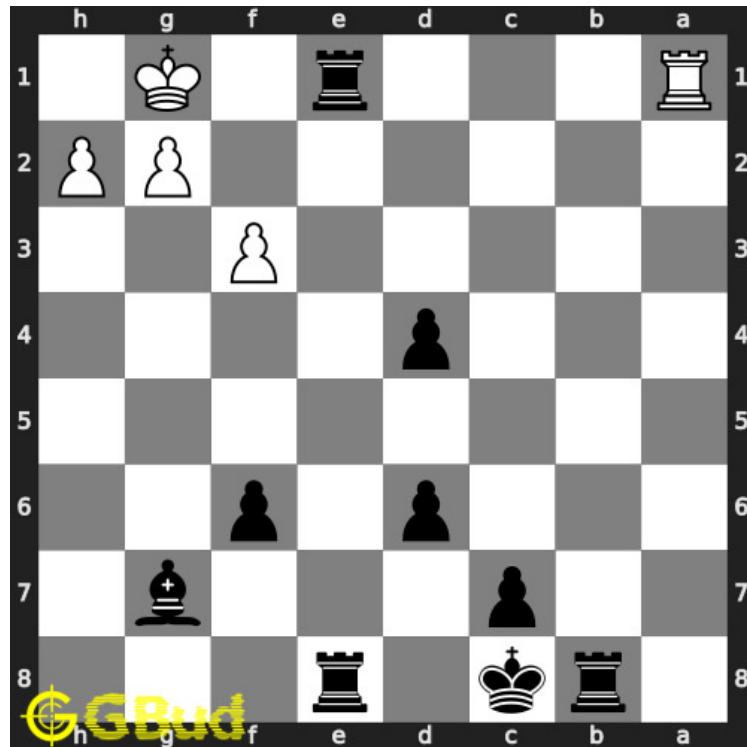


Figure 1.8: e1=R+ - Pawn is promoted to a rook and gives check to the opponents king. The piece is sacrificed to gain the rook

1.2.2.3 Move 2

Move by white

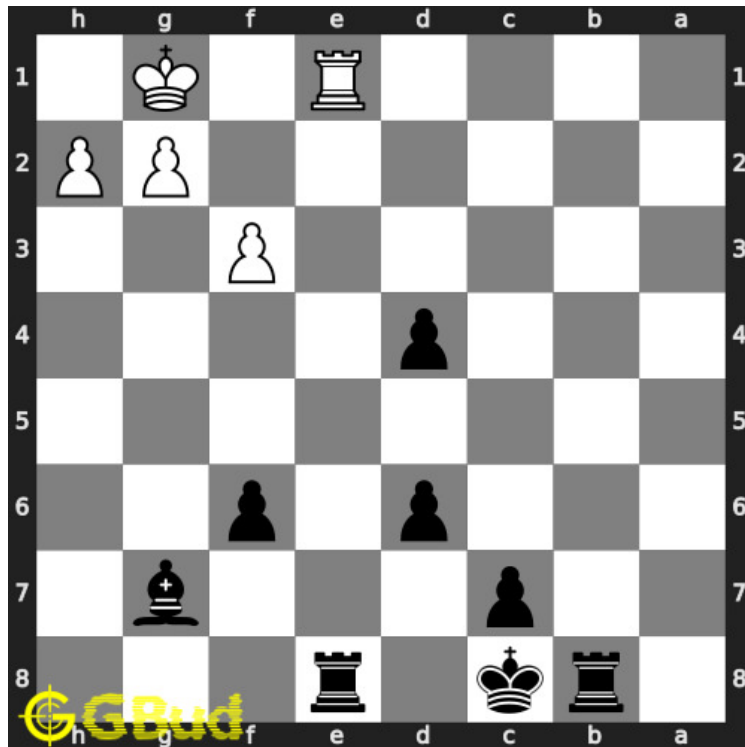


Figure 1.9: Rxe1 - The rook captures your promoted piece to escape from the check

1.2.2.4 Move 3

Move by black

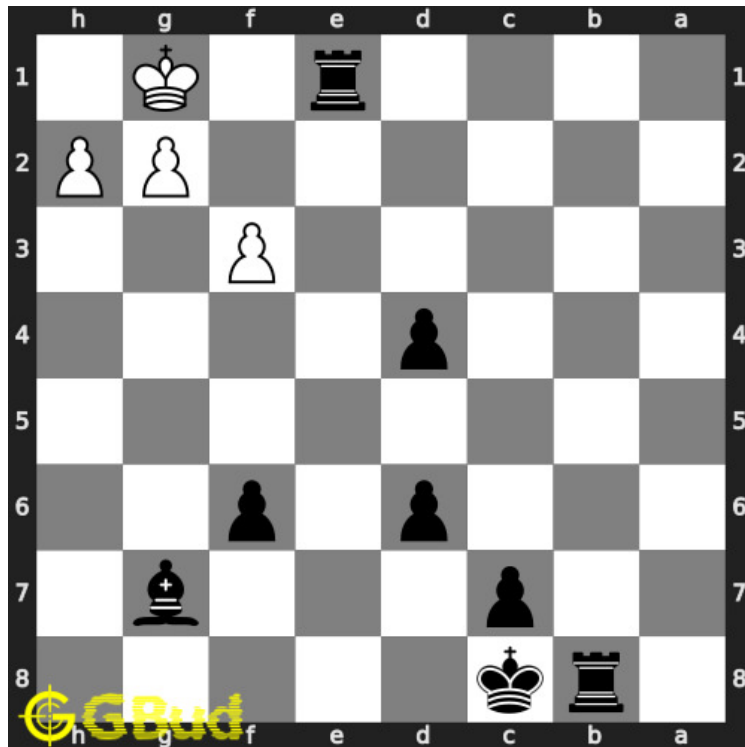


Figure 1.10: Rxe1+ - You have lost a promoted piece, but gained a rook. Now you can promote the pawn in d file and have a better chance in winning the game

1.2.3 Right moves for the solution to the medium chess puzzle 0034

Based on the objective of the puzzle, you have to make the right moves. Following are the right moves

1. e1=Q+, Rxe1+
2. e1=R+, Rxe1+

1.2.4 Explanation for the moves

1. e1=Q+ - Pawn is promoted to a queen and gives check to the opponents king. The piece is sacrificed to gain the rook
2. e1=R+ - Pawn is promoted to a rook and gives check to the opponents king. The piece is sacrificed to gain the rook
3. Rxe1 - The rook captures your promoted piece to escape from the check
4. Rxe1+ - You have lost a promoted piece, but gained a rook. Now you can promote the pawn in d file and have a better chance in winning

the game

5. For right move - You promoted a pawn and sacrificed to gain a rook which makes you superior in the number of pieces available. Good work
6. For wrong move - You could have promoted the pawn and give the check which would have made you have an advantage

1.3 Categories of medium chess puzzle 0034

This medium chess puzzle falls in these categories.

1. [Medium chess puzzles](#)
2. [Sacrifice puzzles in chess](#)
3. [Gain puzzles in chess](#)
4. [Promotion puzzles in chess](#)
5. [Strategy puzzles in chess](#)

1.4 How to view the solution to medium chess puzzle 0034

To view the [solution to this puzzle](#), follow the steps given below

1. Go to the [puzzle page](#)
2. Click the solution button (Key as shown [below](#)) to view the solution



Figure 1.11: Click the solution button to view solutions @ <https://gbud.in/g9jj2j2>

1.5 How to get help for moves in the medium chess puzzle 0034

To get help or the possible next moves in the puzzle, , follow the steps given below

1. Go to the [puzzle page](#)
2. Click the help button (exclamation mark as shown [below](#)) to get help or suggestion on next possible [move](#)



Figure 1.12: Click the help button to get help on next move @ <https://gbud.in/g9jj2j2>



Figure 1.13: Solve more medium puzzles @ <https://gbud.in/chsmdpz>



Figure 1.14: Solve other puzzles @ <https://gbud.in/chsgppz>

1.6 Play chess for free

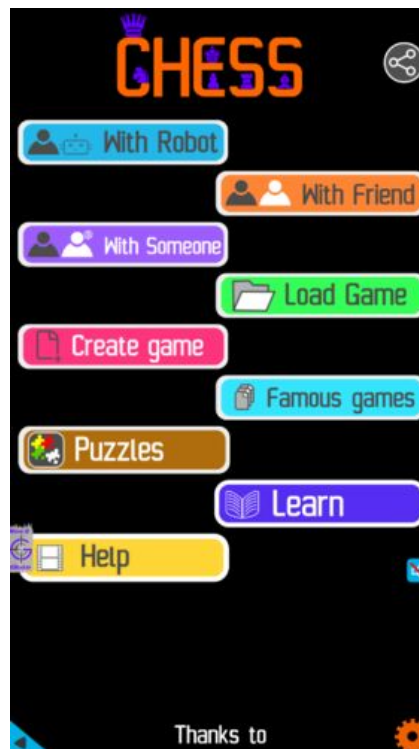


Figure 1.15: Play chess online for free. Solve puzzles and play with friends

Play chess for free at <https://gbud.in/chs>

We present you a platform to play chess online with friends for free. No need to install any app. You can play chess for free without registration or login.

Simple. You can do several chess related activities.

1. solve chess puzzles
2. learn about chess
3. play chess with computer
4. play chess with friend
5. create your own chess games
6. fen viewer
7. fen editor
8. fen generator
9. pgn viewer
10. chess board editor
11. view famous chess games.



Figure 1.16: Solve this puzzle online by scanning this QR code or go to the link below

<https://gbud.in/g9jj2j2>

Read the latest article on Medium Chess puzzle # 0034 - Gain rook by scanning this QR code or click the link

Previous article : « [Medium Chess puzzle # 0033 - Mate in 2 moves](#)

Next article : [Medium chess puzzles](#) »

[Back to top](#)

[Contact Us](#)

© GBud Games 2021