



Medium Chess Puzzle # 0030

By

G Bud Games
<https://gbud.in>

October 2, 2021

Contents

Medium Chess puzzle # 0030 - Mate in 2 moves	4
Medium chess puzzle 0030	4
Solution to medium chess puzzle 0030	5
Solution 1	5
Solution 2	7
Solution 3	9
Solution 4	11
Right moves for the solution to the medium chess puzzle 0030	13
Explanation for the moves	13
Categories of medium chess puzzle 0030	14
How to view the solution to medium chess puzzle 0030	14
How to get help for moves in the medium chess puzzle 0030	15
Play chess for free	16

List of Figures

1	Solve this medium chess puzzle 0030. Mate in 2 moves @ https://gbud.in/ghfjlx2	4
2	Solve this medium chess puzzle online with solution @ https://gbud.in/ghfjlx2	4
3	Initial board position of medium chess puzzle 0030	5
4	f4 - This is to threaten the opponent's knight so that it will move out of e file	6
5	Ng6 - Opponent is trying to save their knight without realising the dangerous next move.	6
6	Nf6# - This is a double discovered check as the knight and the queen are giving the check. The king has no free squares to move. Hence it is a checkmate	7
7	Initial board position of medium chess puzzle 0030	7
8	d4 - This is to threaten the opponent's knight so that it will move out of e file	8
9	Ng6 - Opponent is trying to save their knight without realising the dangerous next move.	8
10	Nf6# - This is a double discovered check as the knight and the queen are giving the check. The king has no free squares to move. Hence it is a checkmate	9
11	Initial board position of medium chess puzzle 0030	9

12	f4 - This is to threaten the opponent's knight so that it will move out of e file	10
13	Ng6 - Opponent is trying to save their knight without realising the dangerous next move.	10
14	Nd6# - This is a double discovered check as the knight and the queen are giving the check. The king has no free squares to move. Hence it is a checkmate	11
15	Initial board position of medium chess puzzle 0030	11
16	d4 - This is to threaten the opponent's knight so that it will move out of e file	12
17	Ng6 - Opponent is trying to save their knight without realising the dangerous next move.	12
18	Nd6# - This is a double discovered check as the knight and the queen are giving the check. The king has no free squares to move. Hence it is a checkmate	13
19	Click the solution button to view solutions @ https://gbud.in/ghfjlx2	14
20	Click the help button to get help on next move @ https://gbud.in/ghfjlx2	15
21	Solve more medium puzzles @ https://gbud.in/chsmdpz	15
22	Solve other puzzles @ https://gbud.in/chsgppz	15
23	Play chess online for free. Solve puzzles and play with friends	16
24	Solve this puzzle online by scanning this QR code or go to the link below	17

Medium Chess puzzle # 0030 - Mate in 2 moves

Solve this medium chess puzzle and improve your chess games through improvement of your chess strategies and chess tactics.

Puzzle No : 0030

Difficulty level : medium

Description : Mate in 2 moves

Next Move : White

Player level : Intermediate

Short URL for puzzle : <https://gbud.in/ghfjlx2>

Medium chess puzzle 0030

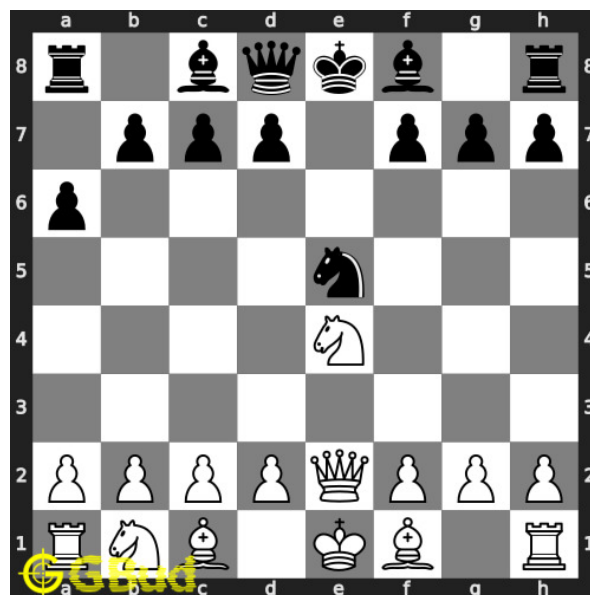


Figure 1: Solve this medium chess puzzle 0030. Mate in 2 moves @ <https://gbud.in/ghfjlx2>



Figure 2: Solve this medium chess puzzle online with solution @ <https://gbud.in/ghfjlx2>

Solution to medium chess puzzle 0030

At this puzzle, next **move** is by **White**. The objective of the puzzle is to mate in 2 moves.

See the interactive solution at the [puzzle page](#)

Solution 1

Initial board position This is the initial board position of medium chess puzzle 0030.

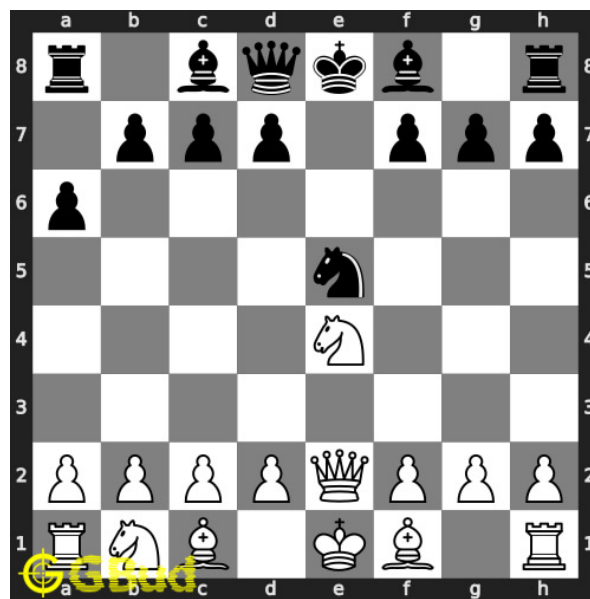


Figure 3: Initial board position of medium chess puzzle 0030

Move 1 Move by white

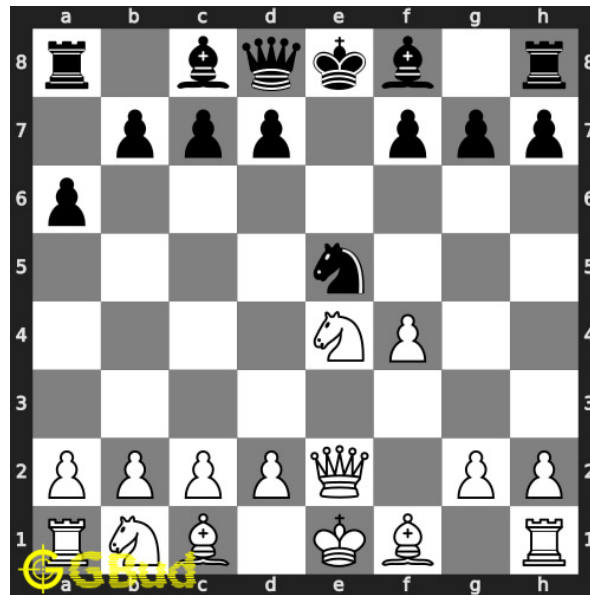


Figure 4: f4 - This is to threaten the opponent's knight so that it will move out of e file

Move 2 Move by black

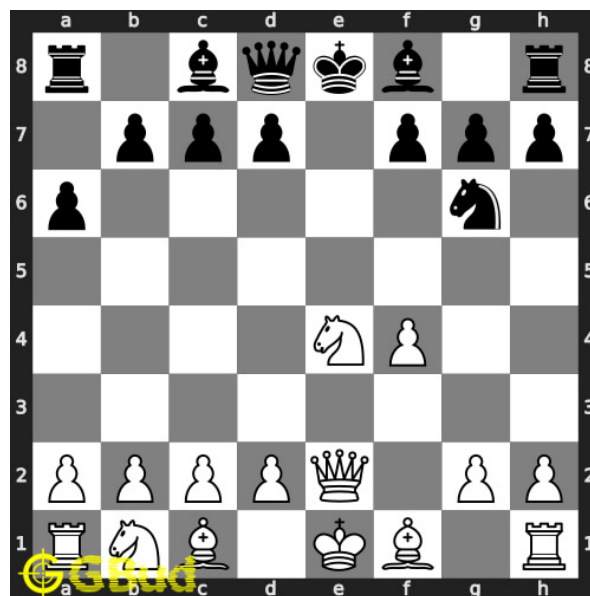


Figure 5: Ng6 - Opponent is trying to save their knight without realising the dangerous next move.

Move 3 Move by white

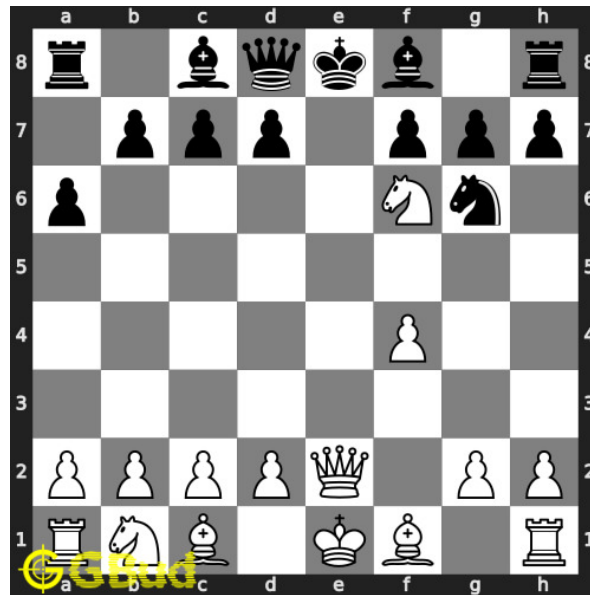


Figure 6: Nf6# - This is a double discovered check as the knight and the queen are giving the check. The king has no free squares to move. Hence it is a checkmate

Solution 2

Initial board position This is the initial board position of medium chess puzzle 0030.

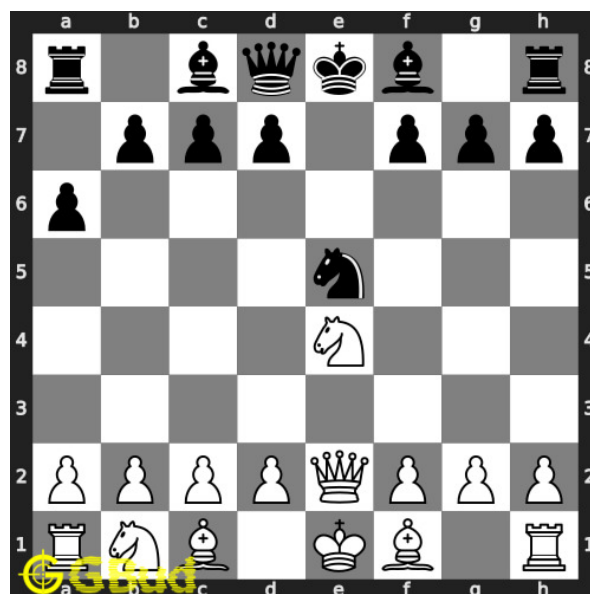


Figure 7: Initial board position of medium chess puzzle 0030

Move 1 Move by white

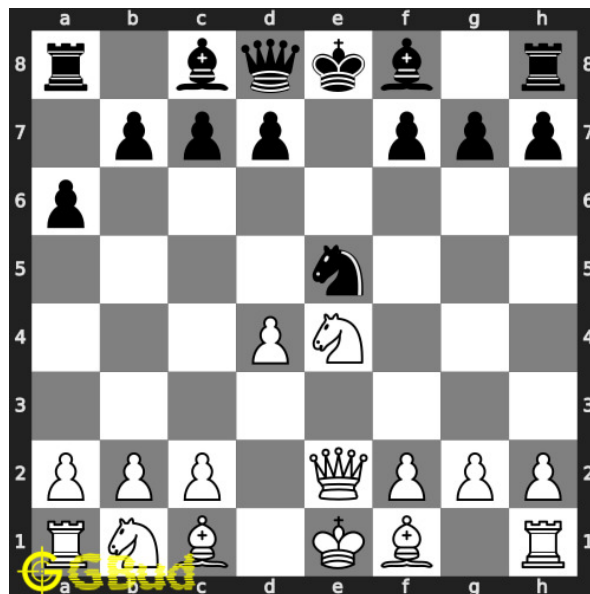


Figure 8: d4 - This is to threaten the opponent's knight so that it will move out of e file

Move 2 Move by black

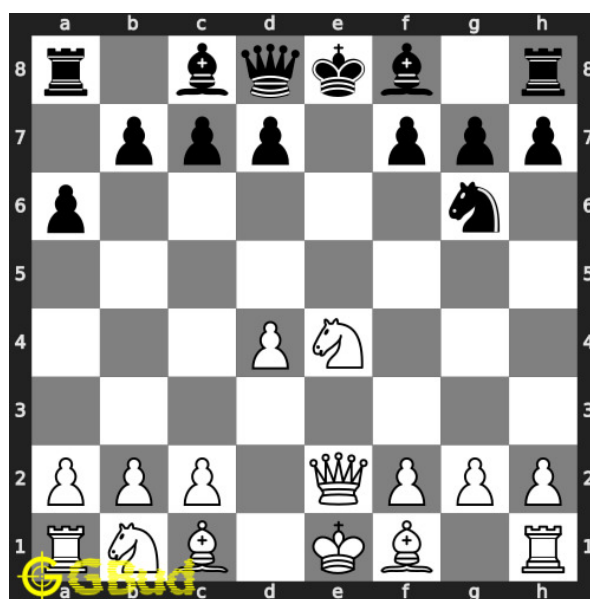


Figure 9: Ng6 - Opponent is trying to save their knight without realising the dangerous next move.

Move 3 Move by white

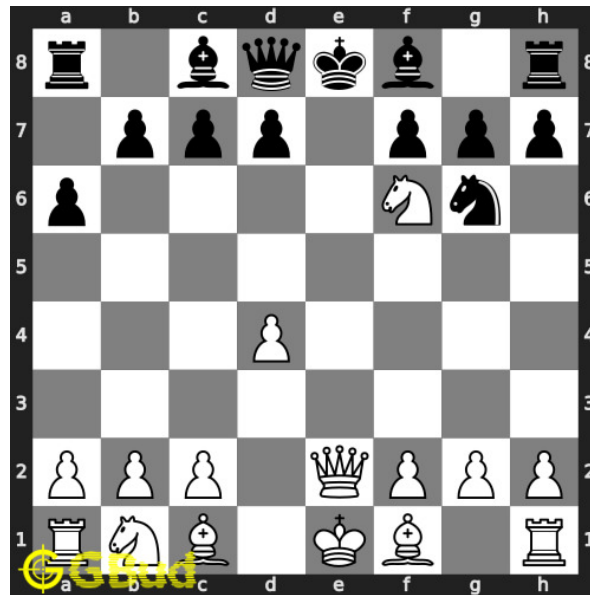


Figure 10: Nf6# - This is a double discovered check as the knight and the queen are giving the check. The king has no free squares to move. Hence it is a checkmate

Solution 3

Initial board position This is the initial board position of medium chess puzzle 0030.

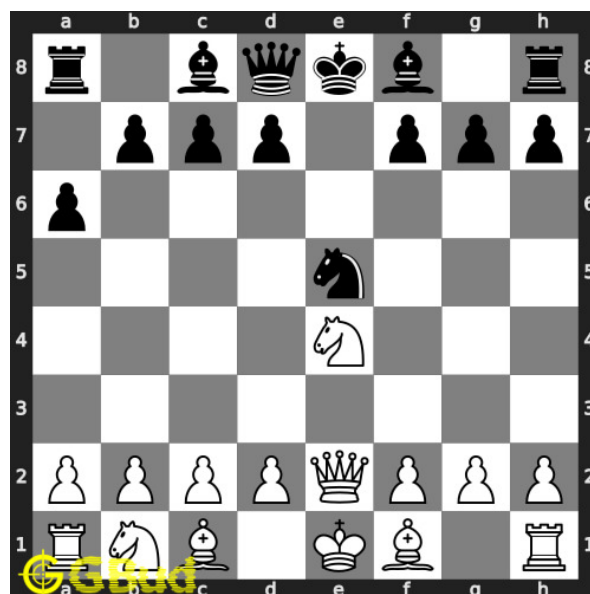


Figure 11: Initial board position of medium chess puzzle 0030

Move 1 Move by white

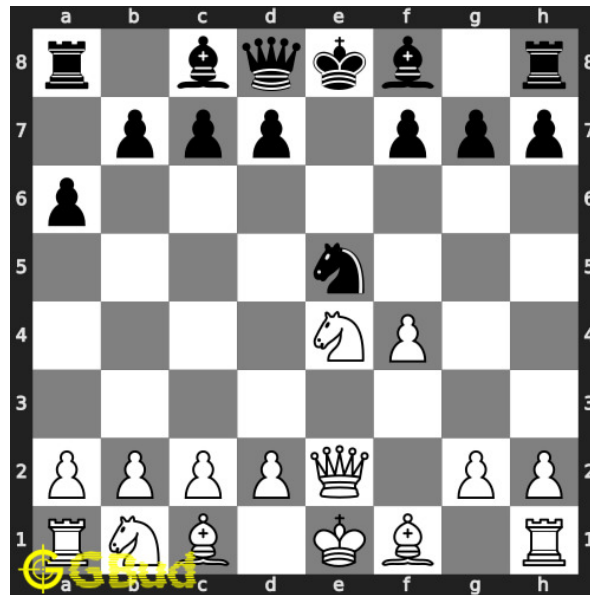


Figure 12: f4 - This is to threaten the opponent's knight so that it will move out of e file

Move 2 Move by black

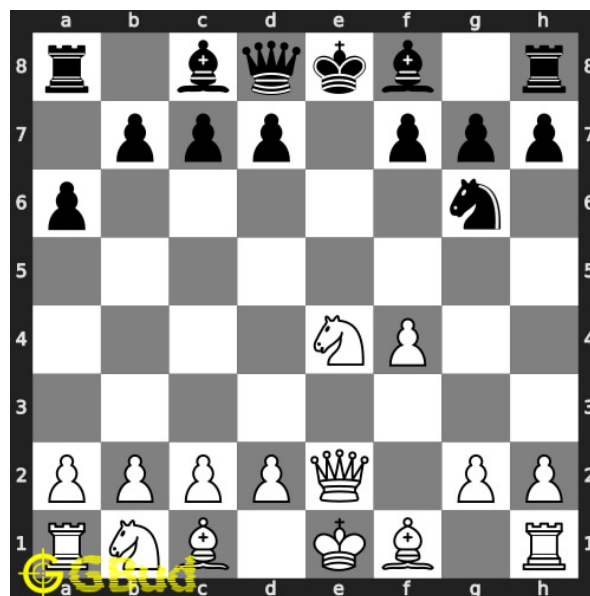


Figure 13: Ng6 - Opponent is trying to save their knight without realising the dangerous next move.

Move 3 Move by white

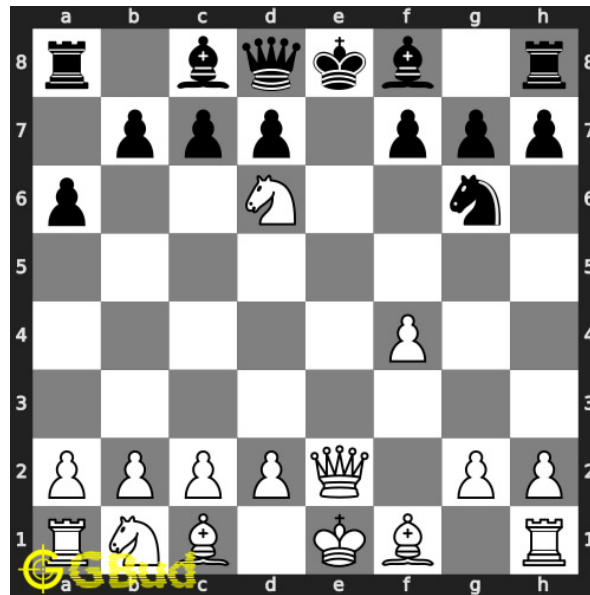


Figure 14: Nd6# - This is a double discovered check as the knight and the queen are giving the check. The king has no free squares to move. Hence it is a checkmate

Solution 4

Initial board position This is the initial board position of medium chess puzzle 0030.

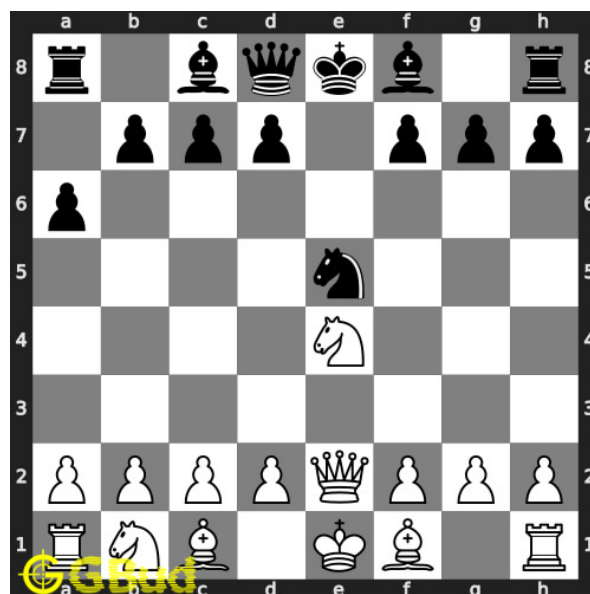


Figure 15: Initial board position of medium chess puzzle 0030

Move 1 Move by white

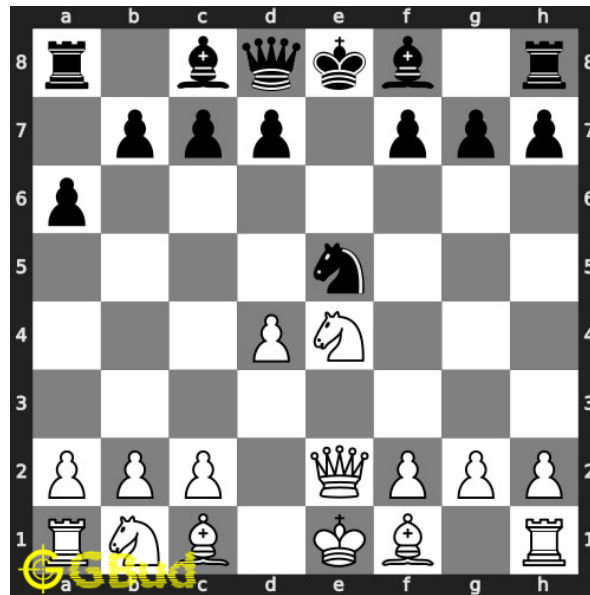


Figure 16: d4 - This is to threaten the opponent's knight so that it will move out of e file

Move 2 Move by black

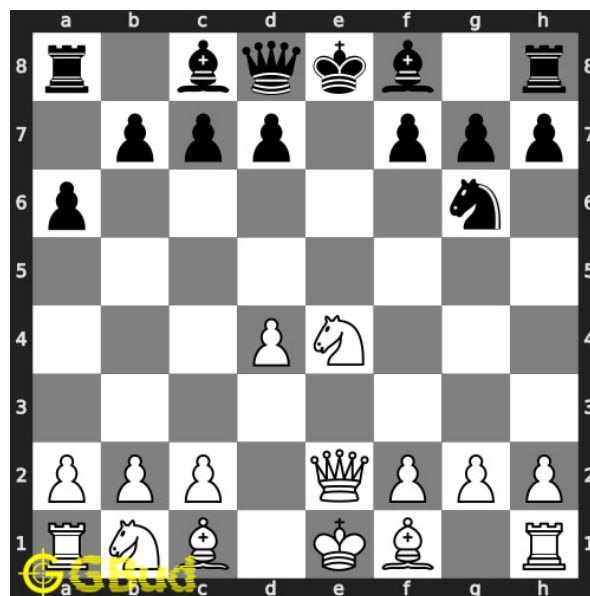


Figure 17: Ng6 - Opponent is trying to save their knight without realising the dangerous next move.

Move 3 Move by white

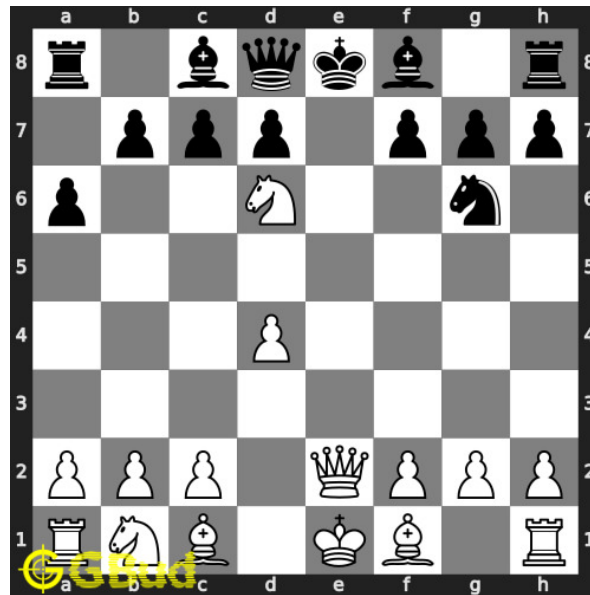


Figure 18: Nd6# - This is a double discovered check as the knight and the queen are giving the check. The king has no free squares to move. Hence it is a checkmate

Right moves for the solution to the medium chess puzzle 0030

Based on the objective of the puzzle, you have to make the right moves. Following are the right moves

1. f4, Nf6#
2. d4, Nf6#
3. f4, Nd6#
4. d4, Nd6#

Explanation for the moves

1. f4 - This is to threaten the opponent's knight so that it will move out of e file
2. d4 - This is to threaten the opponent's knight so that it will move out of e file
3. Nf6# - This is a double discovered check as the knight and the queen are giving the check. The king has no free squares to move. Hence it is a checkmate
4. Ng6 - Opponent is trying to save their knight without realising the dangerous next move.
5. Nd6# - This is a double discovered check as the knight and the queen are giving the check. The king has no free squares to move. Hence

it is a checkmate

6. For right move - You threatened the opponents knight and had a checkmate. Good strategy
7. For wrong move - You could have threatened the opponents knight and had a checkmate by a discovered attack

Categories of medium chess puzzle 0030

This medium chess puzzle falls in these categories.

1. [Medium chess puzzles](#)
2. [Mate in 2 puzzles in chess](#)
3. [Endgame puzzles in chess](#)
4. [Strategy puzzles in chess](#)

How to view the solution to medium chess puzzle 0030

To view the [solution to this puzzle](#), follow the steps given below

1. Go to the [puzzle page](#)
2. Click the solution button (Key as shown [below](#)) to view the solution



Figure 19: Click the solution button to view solutions @ <https://gbud.in/ghfjlx2>

How to get help for moves in the medium chess puzzle 0030

To get help or the possible next moves in the puzzle, , follow the steps given below

1. Go to the [puzzle page](#)
2. Click the help button (exclamation mark as shown [below](#)) to get help or suggestion on next possible [move](#)



Figure 20: Click the help button to get help on next move @ <https://gbud.in/ghfjlx2>



Figure 21: Solve more medium puzzles @ <https://gbud.in/chsmdpz>



Figure 22: Solve other puzzles @ <https://gbud.in/chsgppz>

Play chess for free

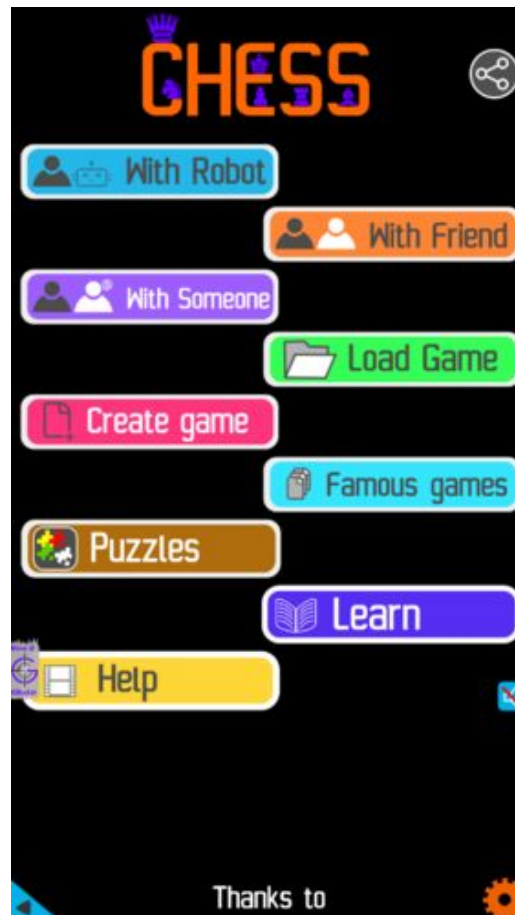


Figure 23: Play chess online for free. Solve puzzles and play with friends

Play chess for free at <https://gbud.in/chs>

We present you a platform to play chess online with friends for free. No need to install any app. You can play chess for free without registration or login.

Simple. You can do several chess related activities.

1. [solve chess puzzles](#)
2. [learn about chess](#)
3. [play chess with computer](#)
4. [play chess with friend](#)
5. [create your own chess games](#)

6. [fen viewer](#)
7. [fen editor](#)
8. [fen generator](#)
9. [pgn viewer](#)
10. [chess board editor](#)
11. [view famous chess games.](#)



Figure 24: Solve this puzzle online by scanning this QR code or go to the link below

<https://gbud.in/ghfjlx2>

Read the latest article on Medium Chess puzzle # 0030 - Mate in 2 moves by scanning this QR code or click the link

Previous article : [« Medium Chess puzzle # 0029 - Mate in 2 moves](#)

Next article : [Medium chess puzzles »](#)

[Back to top](#)

[Contact Us](#)