



## Medium Chess Puzzle # 0029

By

G Bud Games  
<https://gbud.in>

October 1, 2021

## Contents

<b>Medium Chess puzzle # 0029 - Mate in 2 moves</b>	<b>4</b>
Medium chess puzzle 0029 . . . . .	4
Solution to medium chess puzzle 0029 . . . . .	5
Solution 1 . . . . .	5
Solution 2 . . . . .	7
Right moves for the solution to the medium chess puzzle 0029	9
Explanation for the moves . . . . .	9
Categories of medium chess puzzle 0029 . . . . .	10
How to view the solution to medium chess puzzle 0029 . . . . .	10
How to get help for moves in the medium chess puzzle 0029 . . . . .	11
Play chess for free . . . . .	12

## List of Figures

1	<a href="https://gbud.in/gm0x4s2">Solve this medium chess puzzle 0029. Mate in 2 moves @ https://gbud.in/gm0x4s2</a> . . . . .	4
2	<a href="https://gbud.in/gm0x4s2">Solve this medium chess puzzle online with solution @ https://gbud.in/gm0x4s2</a> . . . . .	4
3	Initial board position of medium chess puzzle 0029 . . . . .	5
4	Rxc2 - This is a two purpose move. One is to give access to bishop to g2. second one is to distract the opponents attention by losing your rook. This is called sacrifice. . . . .	6
5	Bxc2 - Removing the support to the pawn at g2 is called undermining . . . . .	6
6	Qxg2# - The queen can not be captured since it is supported by the bishop . . . . .	7
7	Initial board position of medium chess puzzle 0029 . . . . .	7
8	Rxc2 - This is a two purpose move. One is to give access to bishop to g2. second one is to distract the opponents attention by losing your rook. This is called sacrifice. . . . .	8
9	Kg1 - King is trying to get out of the attack in next move but this move is of no use . . . . .	8
10	Qxg2# - The queen can not be captured since it is supported by the bishop . . . . .	9
11	Click the solution button to view solutions @ <a href="https://gbud.in/gm0x4s2">https://gbud.in/gm0x4s2</a> . . . . .	10
12	Click the help button to get help on next move @ <a href="https://gbud.in/gm0x4s2">https://gbud.in/gm0x4s2</a> . . . . .	11

13	Solve more medium puzzles @ <a href="https://gbud.in/chsmdpz">https://gbud.in/chsmdpz</a> .	11
14	Solve other puzzles @ <a href="https://gbud.in/chsgppz">https://gbud.in/chsgppz</a> . . . . .	11
15	Play chess online for free. Solve puzzles and play with friends	12
16	Solve this puzzle online by scanning this QR code or go to the link below . . . . .	13

## Medium Chess puzzle # 0029 - Mate in 2 moves

Solve this medium chess puzzle and improve your chess games through improvement of your chess strategies and chess tactics.

Puzzle No : 0029

Difficulty level : medium

Description : Mate in 2 moves

Next Move : Black

Player level : Intermediate

Short URL for puzzle : <https://gbud.in/gm0x4s2>

### Medium chess puzzle 0029

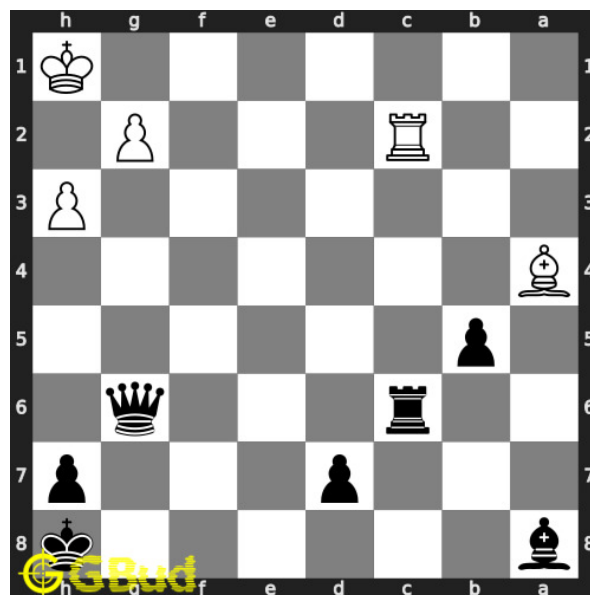


Figure 1: Solve this medium chess puzzle 0029. Mate in 2 moves @ <https://gbud.in/gm0x4s2>



Figure 2: Solve this medium chess puzzle online with solution @ <https://gbud.in/gm0x4s2>

## Solution to medium chess puzzle 0029

At this puzzle, next **move** is by **Black**. The objective of the puzzle is to mate in 2 moves.

See the interactive solution at the [puzzle page](#)

### Solution 1

**Initial board position** This is the initial board position of medium chess puzzle 0029.

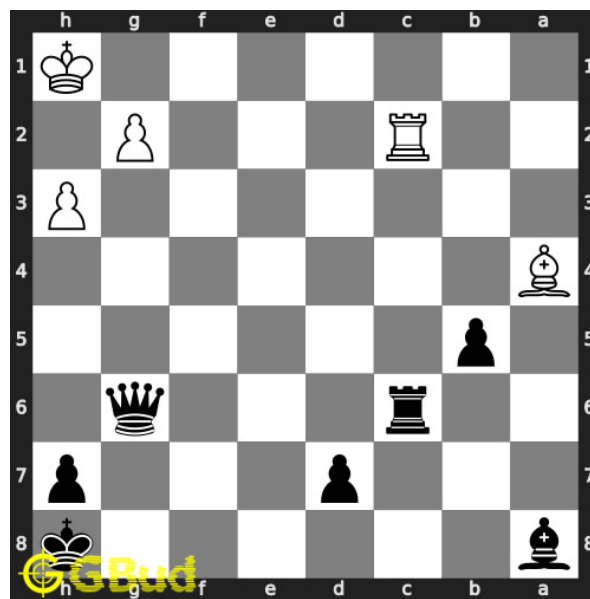


Figure 3: Initial board position of medium chess puzzle 0029

**Move 1** Move by black

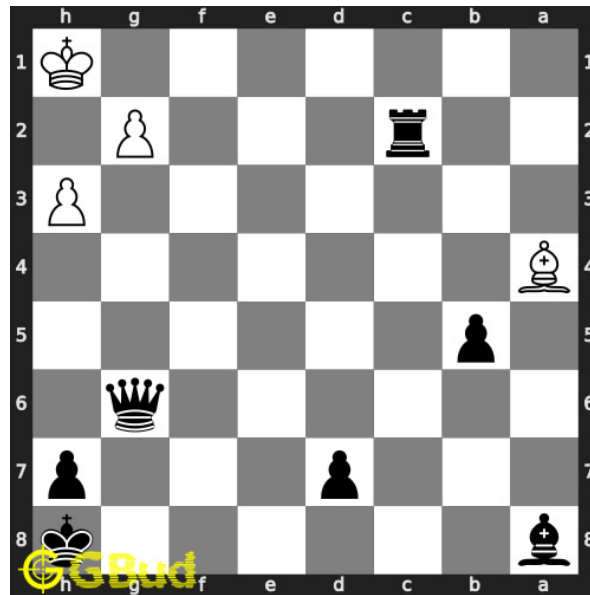


Figure 4: Rxc2 - This is a two purpose move. One is to give access to bishop to g2. second one is to distract the opponents attention by losing your rook. This is called sacrifice.

**Move 2** Move by white

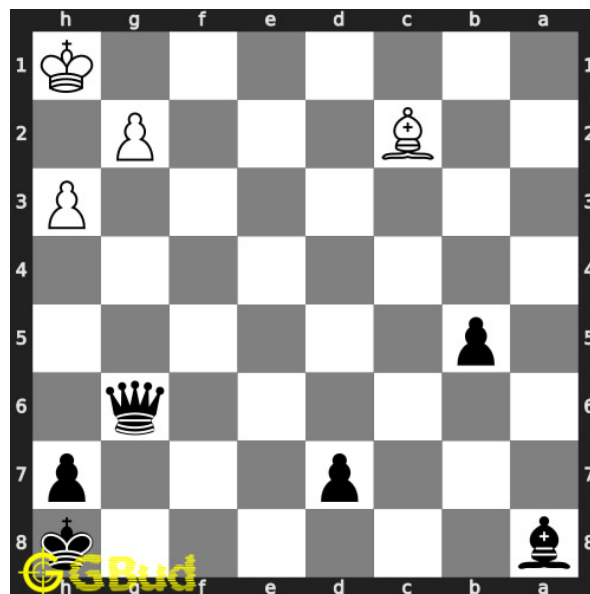


Figure 5: Bxc2 - Removing the support to the pawn at g2 is called undermining

**Move 3** Move by black

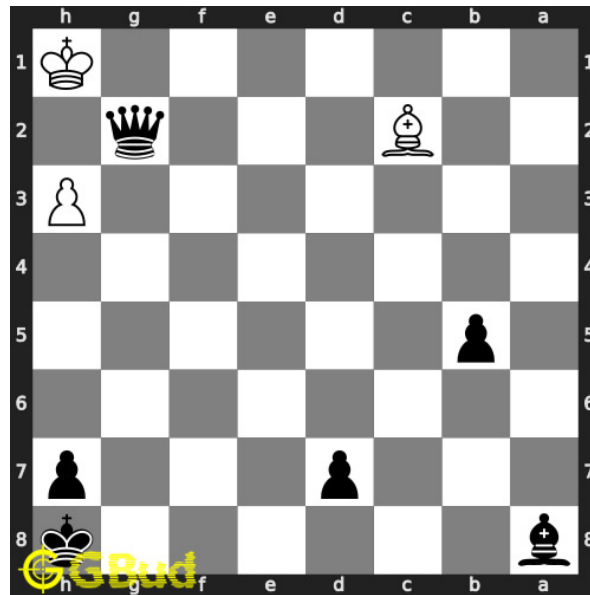


Figure 6: Qxg2# - The queen can not be captured since it is supported by the bishop

## Solution 2

**Initial board position** This is the initial board position of medium chess puzzle 0029.

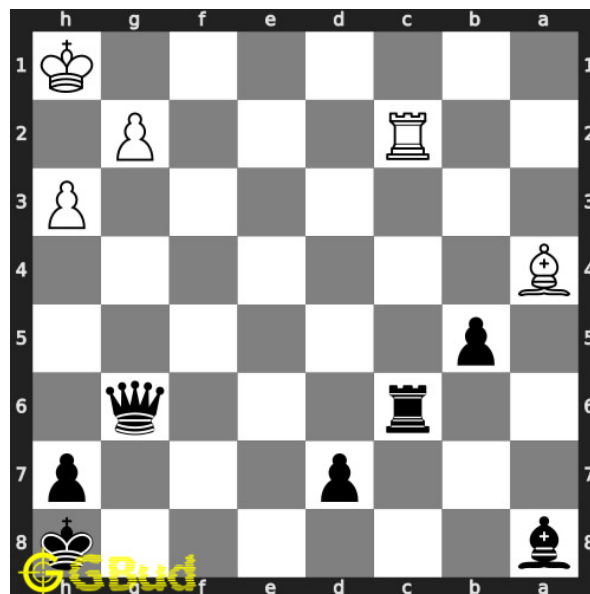


Figure 7: Initial board position of medium chess puzzle 0029

**Move 1** Move by black

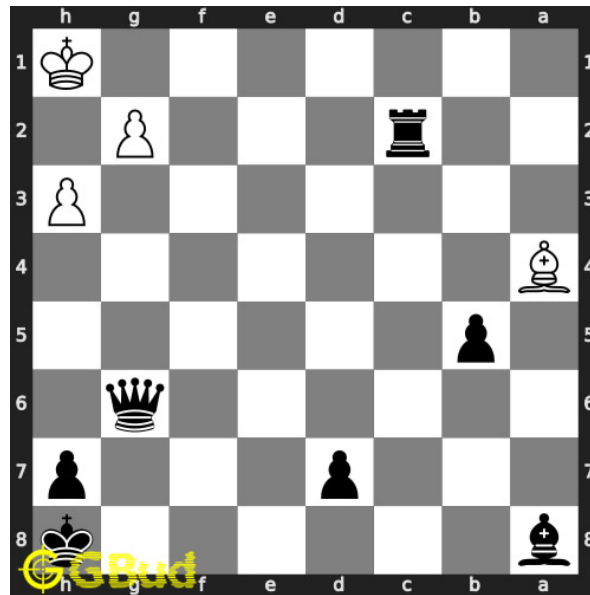


Figure 8: Rxc2 - This is a two purpose move. One is to give access to bishop to g2. second one is to distract the opponents attention by losing your rook. This is called sacrifice.

**Move 2** Move by white

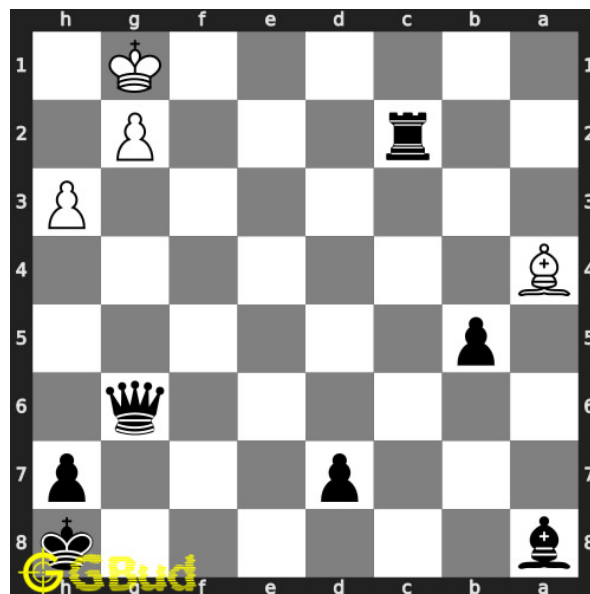


Figure 9: Kg1 - King is trying to get out of the attack in next move but this move is of no use

**Move 3** Move by black



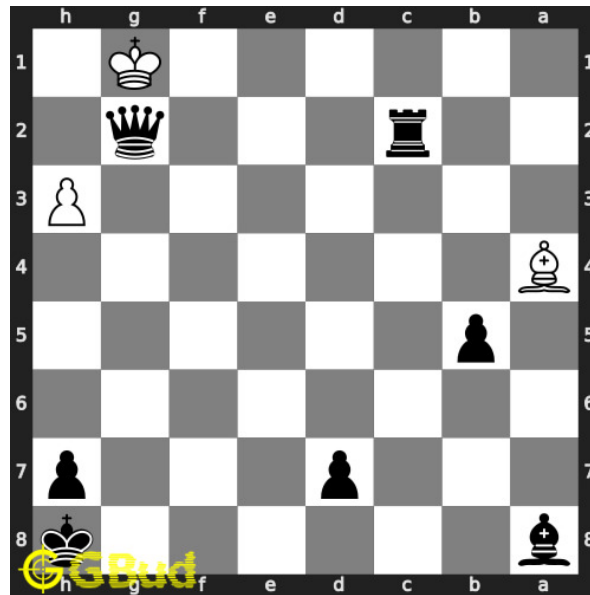


Figure 10:  $Qxg2\#$  - The queen can not be captured since it is supported by the bishop

### Right moves for the solution to the medium chess puzzle 0029

Based on the objective of the puzzle, you have to make the right moves. Following are the right moves

1.  $Rxc2, Qxg2\#$

### Explanation for the moves

1.  $Rxc2$  - This is a two purpose move. One is to give access to bishop to g2. second one is to distract the opponents attention by losing your rook. This is called sacrifice.
2.  $Bxc2$  - Removing the support to the pawn at g2 is called undermining
3.  $Kg1$  - King is trying to get out of the attack in next move but this move is of no use
4.  $Qxg2\#$  - The queen can not be captured since it is supported by the bishop
5. For right move - You undermined the support to the pawn at g2. This helped you have a checkmate in 2 moves
6. For wrong move - You could have utilised the xray attack from the bishop by moving the rook. Try again

## Categories of medium chess puzzle 0029

This medium chess puzzle falls in these categories.

1. [Medium chess puzzles](#)
2. [Sacrifice puzzles in chess](#)
3. [Mate in 2 puzzles in chess](#)
4. [Endgame puzzles in chess](#)
5. [Strategy puzzles in chess](#)

## How to view the solution to medium chess puzzle 0029

To view the [solution to this puzzle](#), follow the steps given below

1. Go to the [puzzle page](#)
2. Click the solution button (Key as shown [below](#)) to view the solution



Figure 11: Click the solution button to view solutions @ <https://gbud.in/gm0x4s2>

## How to get help for moves in the medium chess puzzle 0029

To get help or the possible next moves in the puzzle, , follow the steps given below

1. Go to the [puzzle page](#)
2. Click the help button (exclamation mark as shown [below](#)) to get help or suggestion on next possible [move](#)



Figure 12: Click the help button to get help on next move @ <https://gbud.in/gm0x4s2>



Figure 13: Solve more medium puzzles @ <https://gbud.in/chsmdpz>



Figure 14: Solve other puzzles @ <https://gbud.in/chsgppz>

## Play chess for free

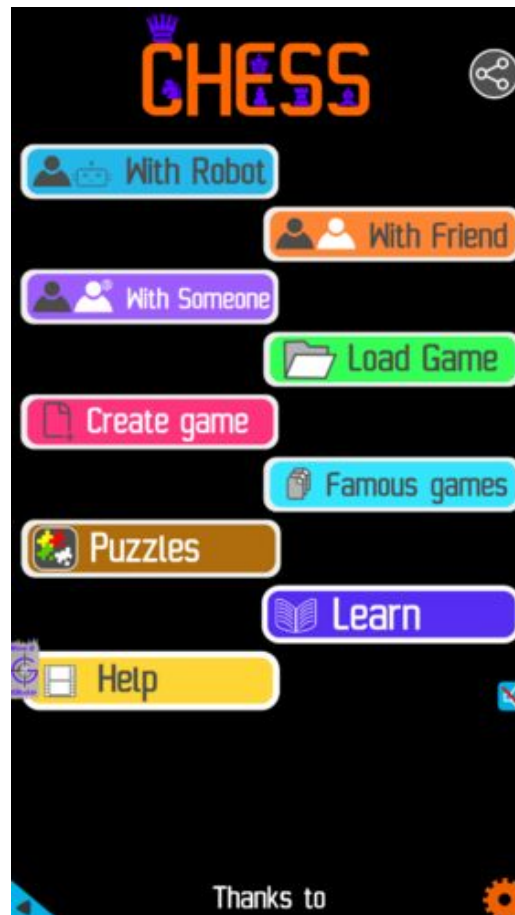


Figure 15: Play chess online for free. Solve puzzles and play with friends

Play chess for free at <https://gbud.in/chs>

We present you a platform to play chess online with friends for free. No need to install any app. You can play chess for free without registration or login.

Simple. You can do several chess related activities.

1. [solve chess puzzles](#)
2. [learn about chess](#)
3. [play chess with computer](#)
4. [play chess with friend](#)
5. [create your own chess games](#)

6. [fen viewer](#)
7. [fen editor](#)
8. [fen generator](#)
9. [pgn viewer](#)
10. [chess board editor](#)
11. [view famous chess games.](#)



Figure 16: Solve this puzzle online by scanning this QR code or go to the link below

<https://gbud.in/gm0x4s2>

Read the latest article on Medium Chess puzzle # 0029 - Mate in 2 moves by scanning this QR code or click the link

Previous article : [« Medium Chess puzzle # 0028 - Mate in 2 moves](#)

Next article : [Medium chess puzzles »](#)

[Back to top](#)

[Contact Us](#)