



Medium Chess Puzzle # 0027

By

G Bud Games
<https://gbud.in>

September 30, 2021

Contents

1	Medium Chess puzzle # 0027 - Mate in 2 moves	3
1.1	Medium chess puzzle 0027	4
1.2	Solution to medium chess puzzle 0027	4
1.2.1	Solution 1	5
1.2.2	Solution 2	8
1.2.3	Solution 3	12
1.2.4	Right moves for the solution to the medium chess puzzle 0027	16
1.2.5	Explanation for the moves	16
1.3	Categories of medium chess puzzle 0027	17
1.4	How to view the solution to medium chess puzzle 0027	17
1.5	How to get help for moves in the medium chess puzzle 0027	18
1.6	Play chess for free	20

List of Figures

1.1	Solve this medium chess puzzle 0027. Mate in 2 moves @ https://gbud.in/g0qndn2	4
1.2	Solve this medium chess puzzle online with solution @ https://gbud.in/g0qndn2	4
1.3	Initial board position of medium chess puzzle 0027	5
1.4	Qhc8 - Two queens are forming a battery along the eights rank	6
1.5	h5 - King has no other pieces to move	7
1.6	Qh8# - King cant escape since it is blocked by friendly pieces	8
1.7	Initial board position of medium chess puzzle 0027	9
1.8	Qhc8 - Two queens are forming a battery along the eights rank	10
1.9	g5 - King has no other pieces to move	11
1.10	Qg8# - King cant escape since it is blocked by friendly pieces	12
1.11	Initial board position of medium chess puzzle 0027	13
1.12	Qxh6+ - This is a sacrifice to attract the king to a vulnerable square. This is called attraction	14
1.13	Kxh6 - The king is forced to capture the queen	15
1.14	Qh8# - King cant escape since it is blocked by friendly pieces	16
1.15	Click the solution button to view solutions @ https://gbud.in/g0qndn2	18
1.16	Click the help button to get help on next move @ https://gbud.in/g0qndn2	19
1.17	Solve more medium puzzles @ https://gbud.in/chsmdpz	19
1.18	Solve other puzzles @ https://gbud.in/chsgppz	19
1.19	Play chess online for free. Solve puzzles and play with friends	20
1.20	Solve this puzzle online by scanning this QR code or go to the link below	21

Chapter 1

Medium Chess puzzle # 0027 - Mate in 2 moves

Solve this medium chess puzzle and improve your chess games through improvement of your chess strategies and chess tactics.

Puzzle No : 0027

Difficulty level : medium

Description : Mate in 2 moves

Next Move : White

Player level : Intermediate

Short URL for puzzle : <https://gbud.in/g0qndn2>

1.1 Medium chess puzzle 0027

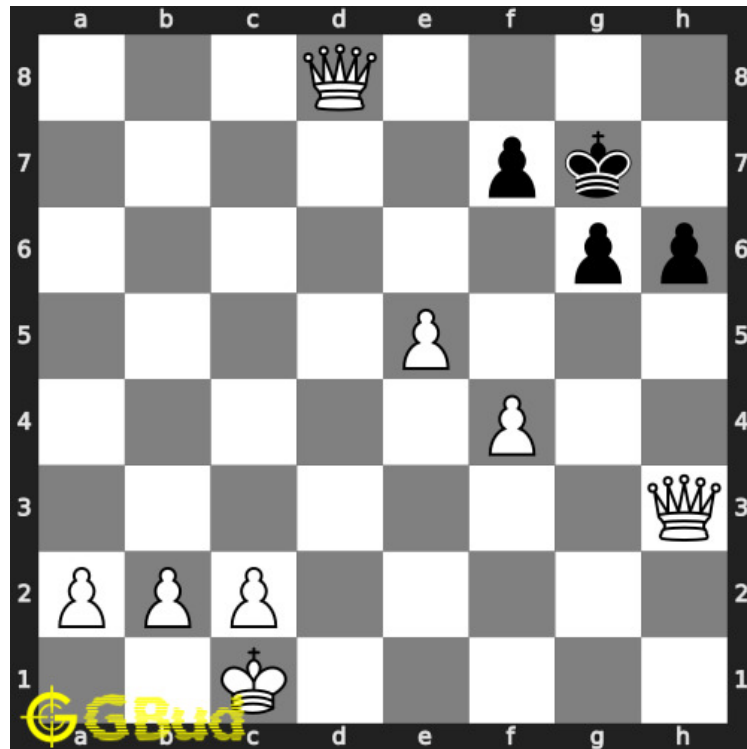


Figure 1.1: Solve this medium chess puzzle 0027. Mate in 2 moves @ <https://gbud.in/g0qndn2>



Figure 1.2: Solve this medium chess puzzle online with solution @ <https://gbud.in/g0qndn2>

1.2 Solution to medium chess puzzle 0027

At this puzzle, next **move** is by **White**. The objective of the puzzle is to mate in 2 moves.

See the interactive solution at the [puzzle page](#)

1.2.1 Solution 1

1.2.1.1 Initial board position

This is the initial board position of medium chess puzzle 0027.

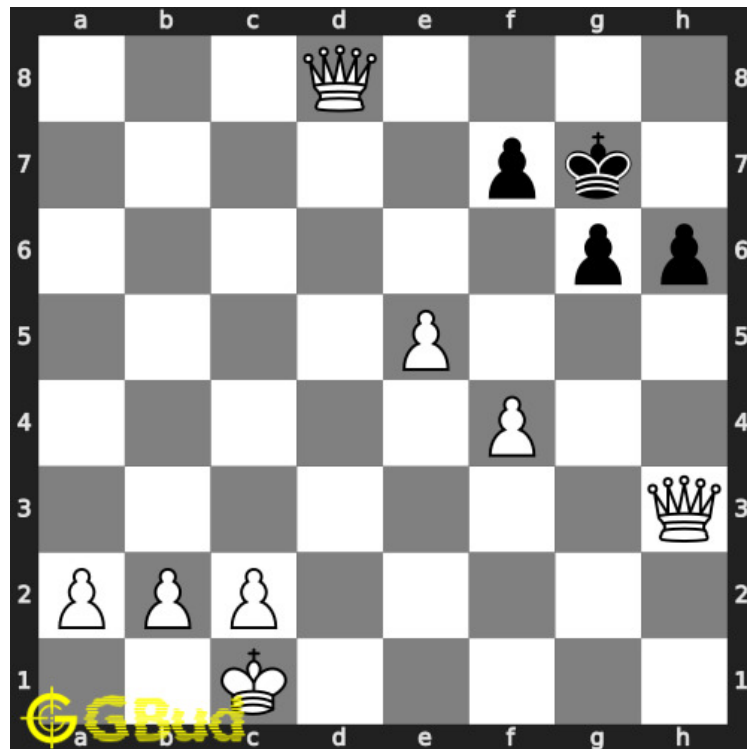


Figure 1.3: Initial board position of medium chess puzzle 0027

1.2.1.2 Move 1

Move by white

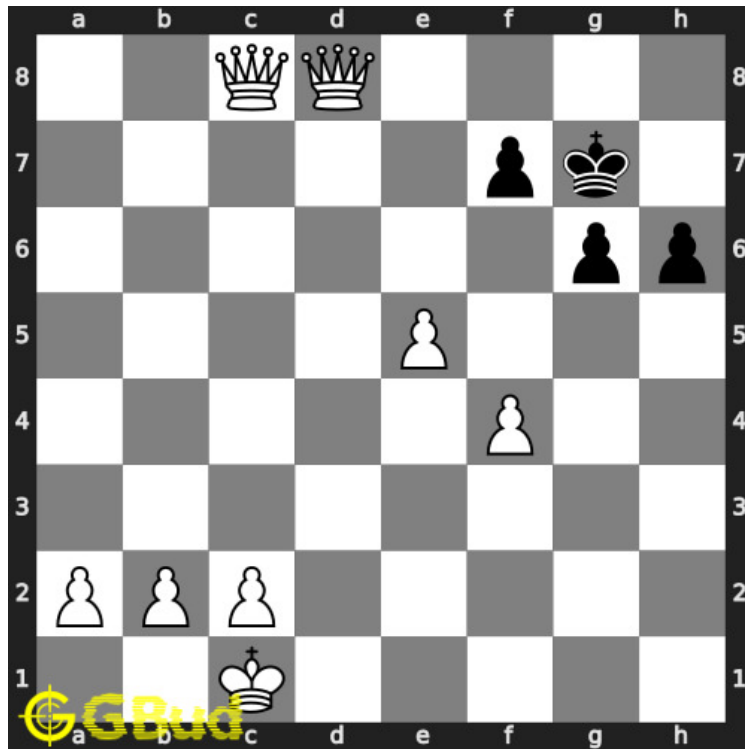


Figure 1.4: Qhc8 - Two queens are forming a battery along the eights rank

1.2.1.3 Move 2

Move by black

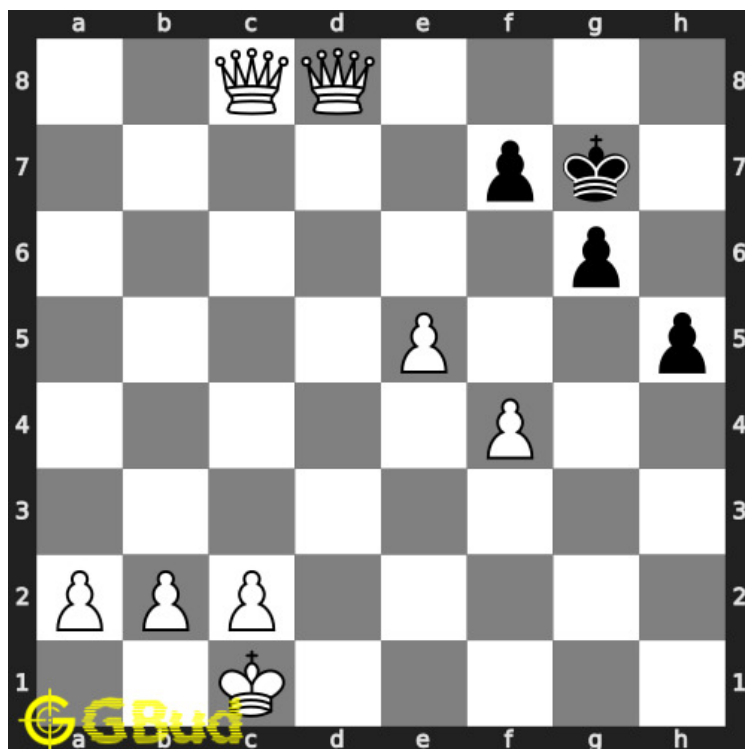


Figure 1.5: h5 - King has no other pieces to move

1.2.1.4 Move 3

Move by white

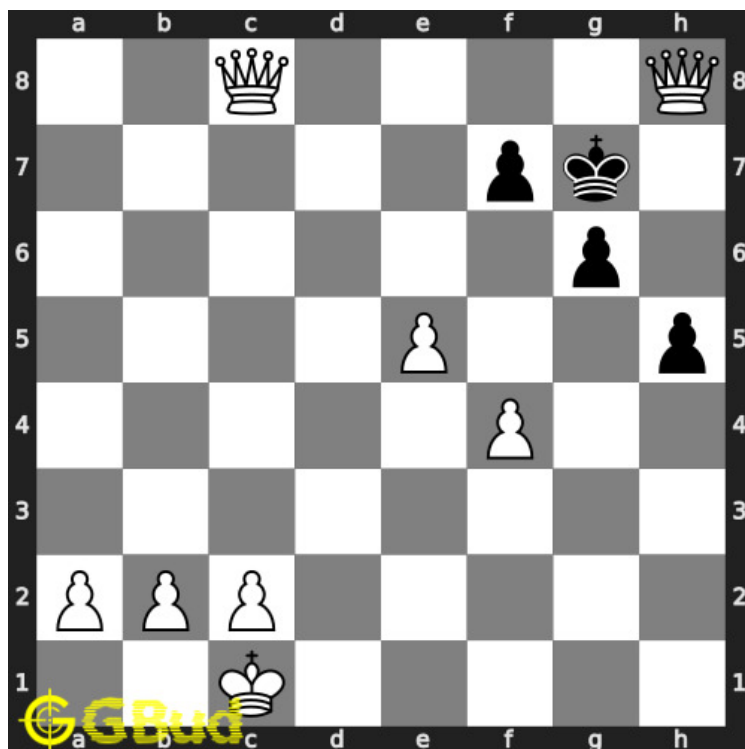


Figure 1.6: Qh8# - King cant escape since it is blocked by friendly pieces

1.2.2 Solution 2

1.2.2.1 Initial board position

This is the initial board position of medium chess puzzle 0027.

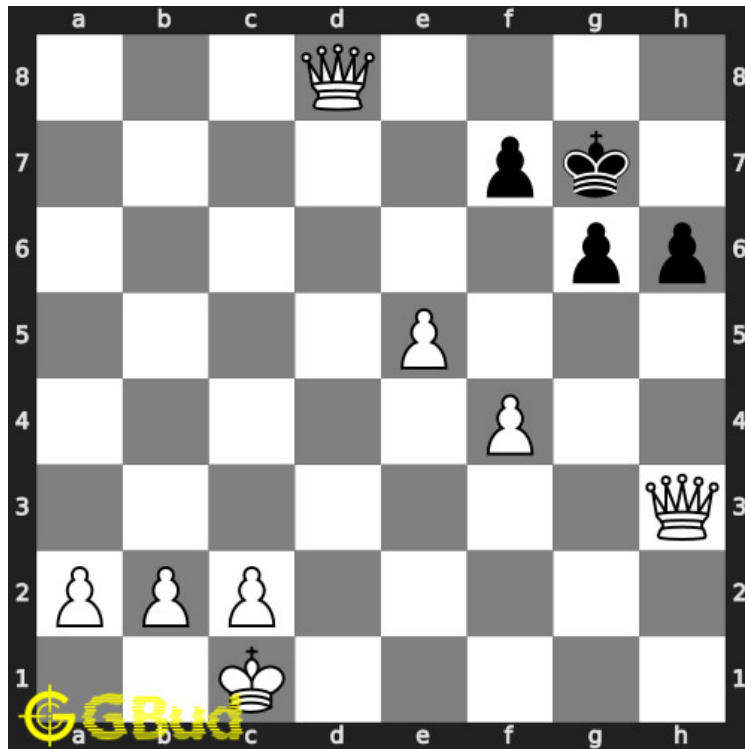


Figure 1.7: Initial board position of medium chess puzzle 0027

1.2.2.2 Move 1

Move by white

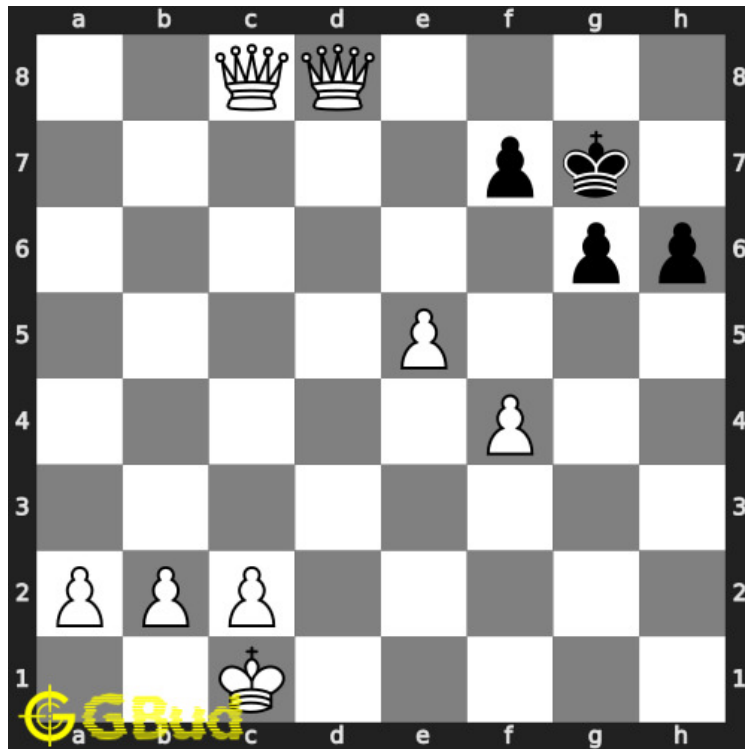


Figure 1.8: Qhc8 - Two queens are forming a battery along the eights rank

1.2.2.3 Move 2

Move by black

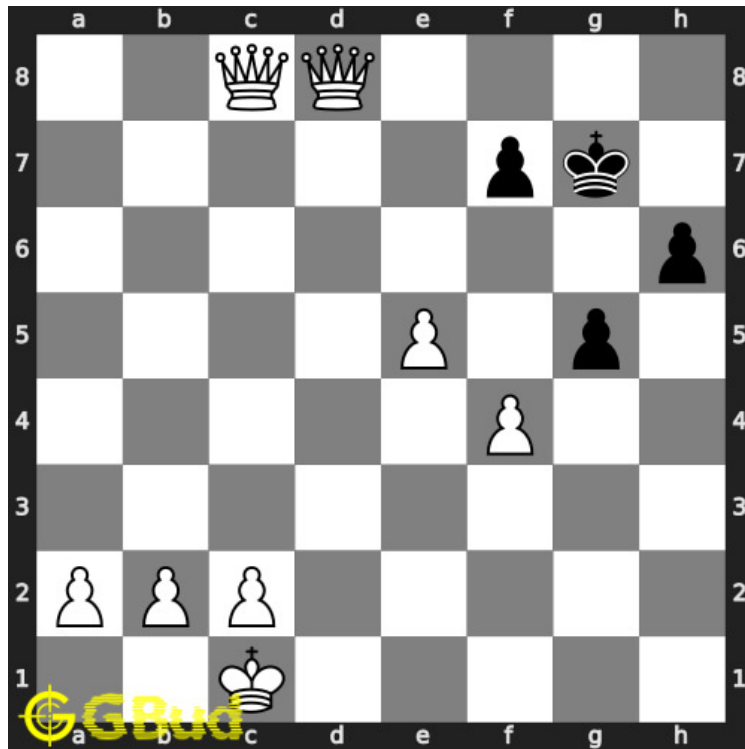


Figure 1.9: g5 - King has no other pieces to move

1.2.2.4 Move 3

Move by white

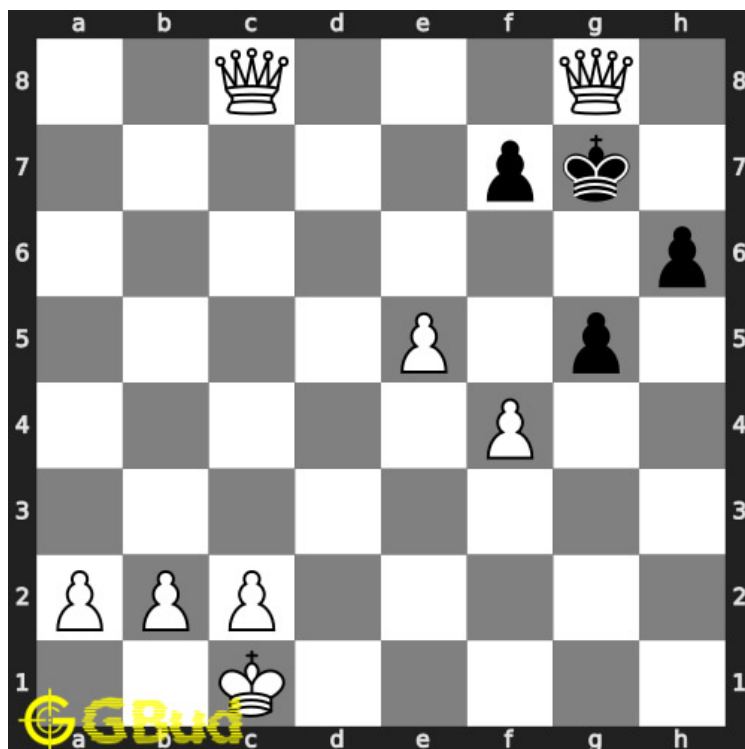


Figure 1.10: Qg8# - King cant escape since it is blocked by friendly pieces

1.2.3 Solution 3

1.2.3.1 Initial board position

This is the initial board position of medium chess puzzle 0027.

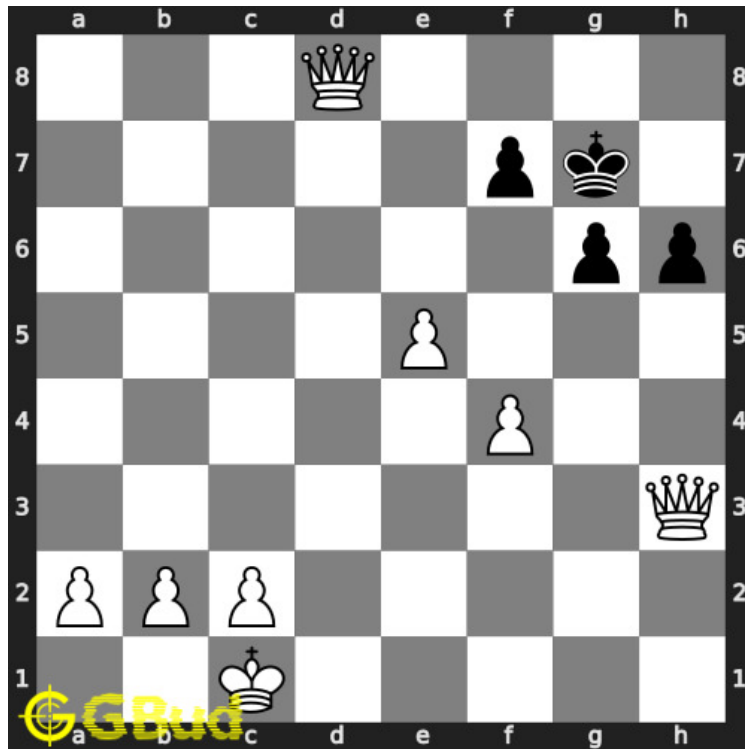


Figure 1.11: Initial board position of medium chess puzzle 0027

1.2.3.2 Move 1

Move by white

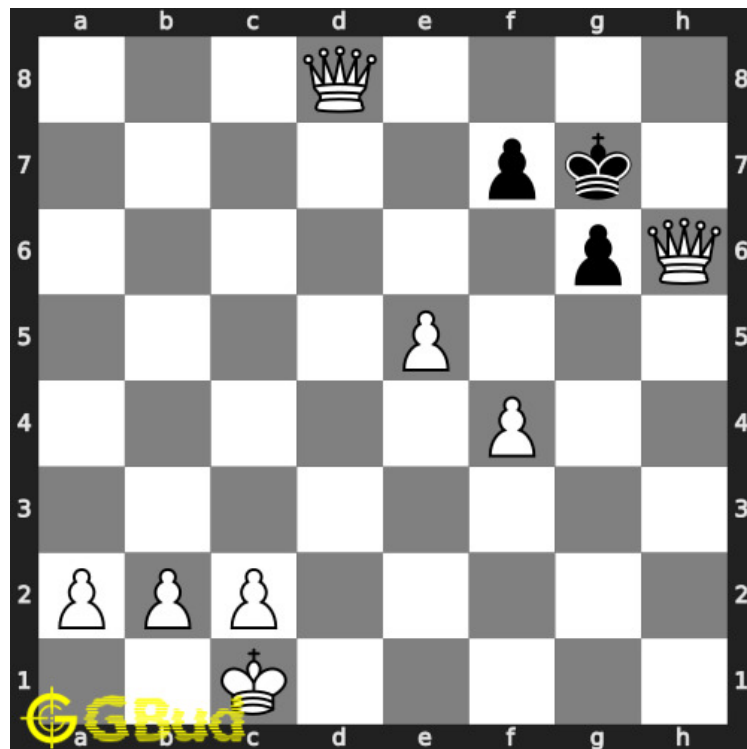


Figure 1.12: Qxh6+ - This is a sacrifice to attract the king to a vulnerable square. This is called attraction

1.2.3.3 Move 2

Move by black

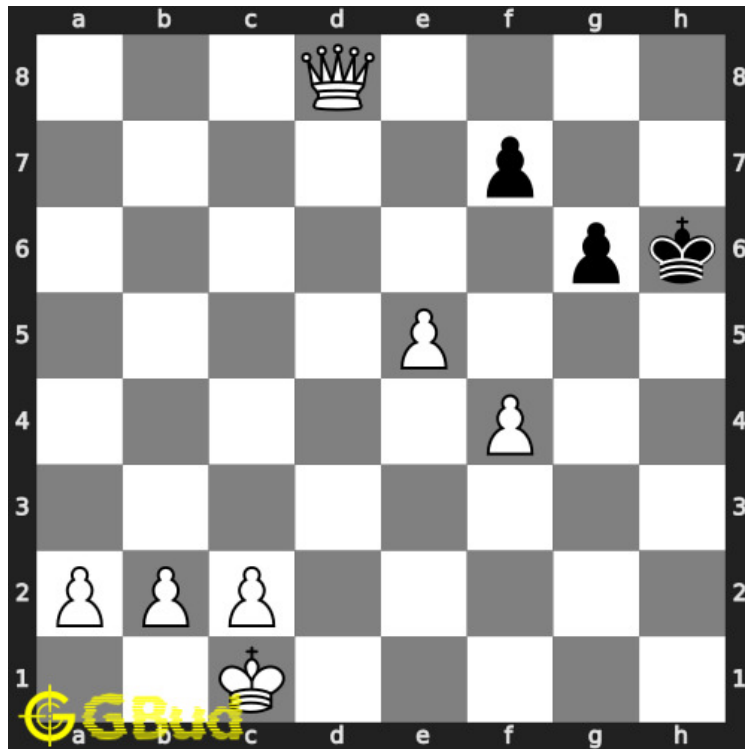


Figure 1.13: Kxh6 - The king is forced to capture the queen

1.2.3.4 Move 3

Move by white

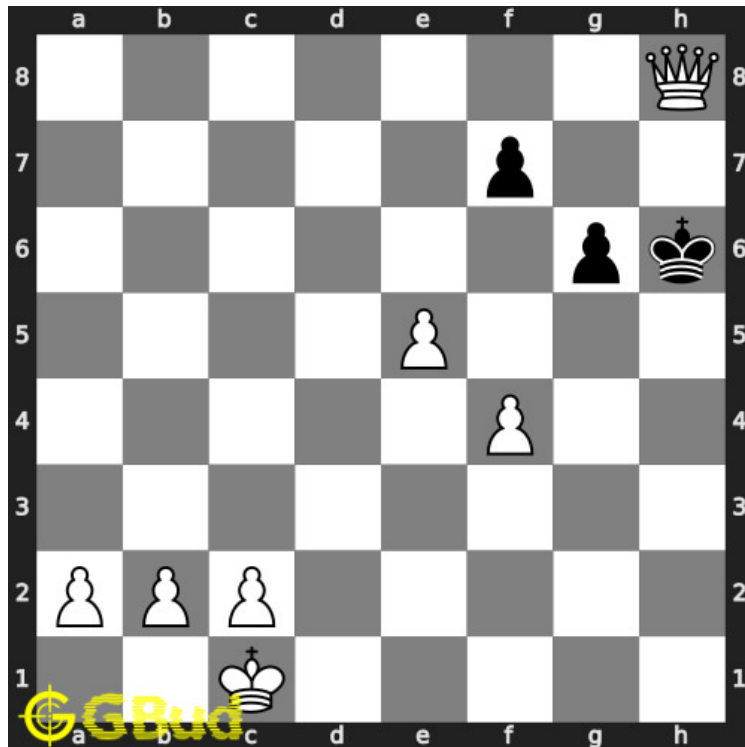


Figure 1.14: Qh8# - King cant escape since it is blocked by friendly pieces

1.2.4 Right moves for the solution to the medium chess puzzle 0027

Based on the objective of the puzzle, you have to make the right moves. Following are the right moves

1. Qhc8, Qh8#
2. Qhc8, Qg8#
3. Qxh6+, Qh8#

1.2.5 Explanation for the moves

1. Qhc8 - Two queens are forming a battery along the eights rank
2. Qh8# - King cant escape since it is blocked by friendly pieces
3. Qg8# - King cant escape since it is blocked by friendly pieces
4. Qxh6+ - This is a sacrifice to attract the king to a vulnerable square. This is called attraction
5. h5 - King has no other pieces to move
6. g5 - King has no other pieces to move
7. Kxh6 - The king is forced to capture the queen

8. For right move - You have chosen the right moves to win the game. good work
9. For wrong move - You could have either formed a battery of queens or sacrifice a queen and won the game. You still have chance. You can do it.

1.3 Categories of medium chess puzzle 0027

This medium chess puzzle falls in these categories.

1. [Medium chess puzzles](#)
2. [Sacrifice puzzles in chess](#)
3. [Mate in 2 puzzles in chess](#)
4. [Endgame puzzles in chess](#)
5. [Battery puzzles in chess](#)

1.4 How to view the solution to medium chess puzzle 0027

To view the [solution to this puzzle](#), follow the steps given below

1. Go to the [puzzle page](#)
2. Click the solution button (Key as shown [below](#)) to view the solution



Figure 1.15: Click the solution button to view solutions @ <https://gbud.in/g0qndn2>

1.5 How to get help for moves in the medium chess puzzle 0027

To get help or the possible next moves in the puzzle, , follow the steps given below

1. Go to the [puzzle page](#)
2. Click the help button (exclamation mark as shown [below](#)) to get help or suggestion on next possible [move](#)



Figure 1.16: Click the help button to get help on next move @ <https://gbud.in/g0qndn2>



Figure 1.17: Solve more medium puzzles @ <https://gbud.in/chsmdpz>



Figure 1.18: Solve other puzzles @ <https://gbud.in/chsgppz>

1.6 Play chess for free



Figure 1.19: Play chess online for free. Solve puzzles and play with friends

Play chess for free at <https://gbud.in/chs>

We present you a platform to [play chess online with friends for free](#). No need to install any app. You can [play chess for free without registration or login](#).

Simple. You can do several chess related activities.

1. [solve chess puzzles](#)
2. [learn about chess](#)
3. [play chess with computer](#)
4. [play chess with friend](#)
5. [create your own chess games](#)
6. [fen viewer](#)
7. [fen editor](#)
8. [fen generator](#)
9. [pgn viewer](#)
10. [chess board editor](#)
11. [view famous chess games](#).



Figure 1.20: Solve this puzzle online by scanning this QR code or go to the link below

<https://gbud.in/g0qndn2>

Read the latest article on Medium Chess puzzle # 0027 - Mate in 2 moves by scanning this QR code or click the link

Previous article : « [Medium Chess puzzle # 0026 - Mate in 2 moves](#)

Next article : [Medium Chess puzzle # 0028 - Mate in 2 moves](#) »

[Back to top](#)

[Contact Us](#)

© GBud Games 2021