



Medium Chess Puzzle # 0024

By

G Bud Games
<https://gbud.in>

September 26, 2021

Contents

1	Medium Chess puzzle # 0024 - Mate in 2 moves	3
1.1	Medium chess puzzle 0024	4
1.2	Solution to medium chess puzzle 0024	4
1.2.1	Solution 1	5
1.2.2	Solution 2	8
1.2.3	Right moves for the solution to the medium chess puzzle 0024	12
1.2.4	Explanation for the moves	12
1.3	Categories of medium chess puzzle 0024	13
1.4	How to view the solution to medium chess puzzle 0024	13
1.5	How to get help for moves in the medium chess puzzle 0024	14
1.6	Play chess for free	15

List of Figures

1.1	Solve this medium chess puzzle 0024. Mate in 2 moves @ https://gbud.in/gzyzqy2	4
1.2	Solve this medium chess puzzle online with solution @ https://gbud.in/gzyzqy2	4
1.3	Initial board position of medium chess puzzle 0024	5
1.4	b7 - Pawn is marching forward for a promotion	6
1.5	g5 - Your opponent has no moves other than moving one of their pawns	7
1.6	b8=Q# - A promotion of pawn to a queen would result in a checkmate as the king has no free squares to move.	8
1.7	Initial board position of medium chess puzzle 0024	9
1.8	b7 - Pawn is marching forward for a promotion	10
1.9	g5 - Your opponent has no moves other than moving one of their pawns	11
1.10	b8=R# - A promotion of pawn to a rook would also result in a checkmate as the king has no free squares to move.	12
1.11	Click the solution button to view solutions @ https://gbud.in/gzyzqy2	13
1.12	Click the help button to get help on next move @ https://gbud.in/gzyzqy2	14
1.13	Solve more medium puzzles @ https://gbud.in/chsmdpz	14
1.14	Solve other puzzles @ https://gbud.in/chsgppz	15
1.15	Play chess online for free. Solve puzzles and play with friends	15
1.16	Solve this puzzle online by scanning this QR code or go to the link below	16

Chapter 1

Medium Chess puzzle # 0024 - Mate in 2 moves

Solve this medium chess puzzle and improve your chess games through improvement of your chess strategies and chess tactics.

Puzzle No : 0024

Difficulty level : medium

Description : Mate in 2 moves

Next Move : White

Player level : Intermediate

Short URL for puzzle : <https://gbud.in/gzyzqy2>

1.1 Medium chess puzzle 0024

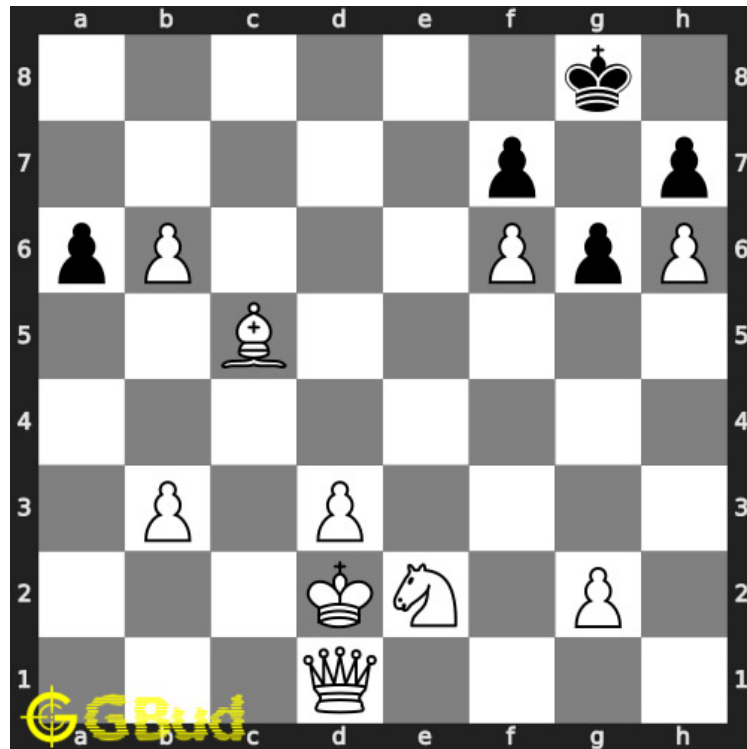


Figure 1.1: Solve this medium chess puzzle 0024. Mate in 2 moves @ <https://gbud.in/gzyzqy2>



Figure 1.2: Solve this medium chess puzzle online with solution @ <https://gbud.in/gzyzqy2>

1.2 Solution to medium chess puzzle 0024

At this puzzle, next **move** is by **White**. The objective of the puzzle is to mate in 2 moves.

See the solution at the [puzzle page](#)

1.2.1 Solution 1

1.2.1.1 Initial board position

This is the initial board position of medium chess puzzle 0024.

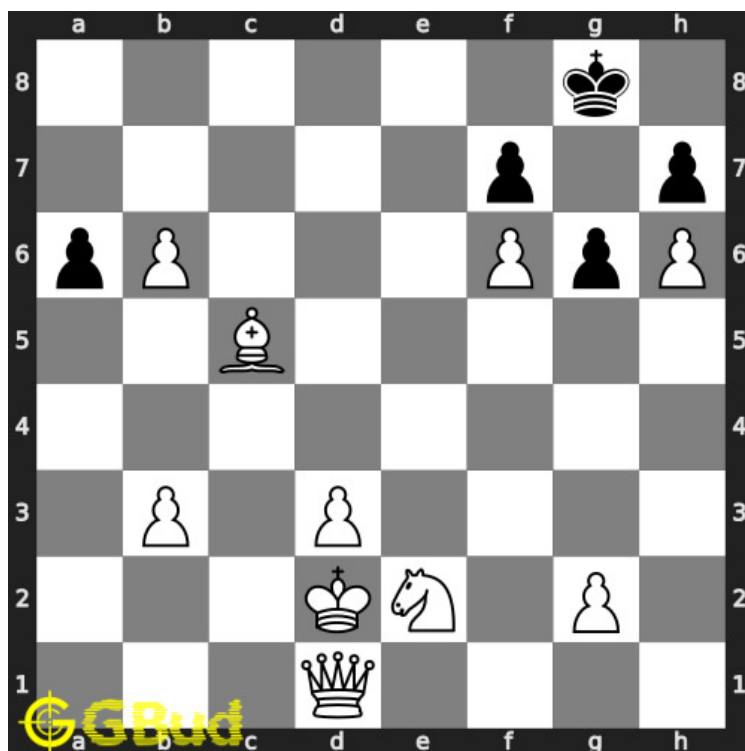


Figure 1.3: Initial board position of medium chess puzzle 0024

1.2.1.2 Move 1

Move by white

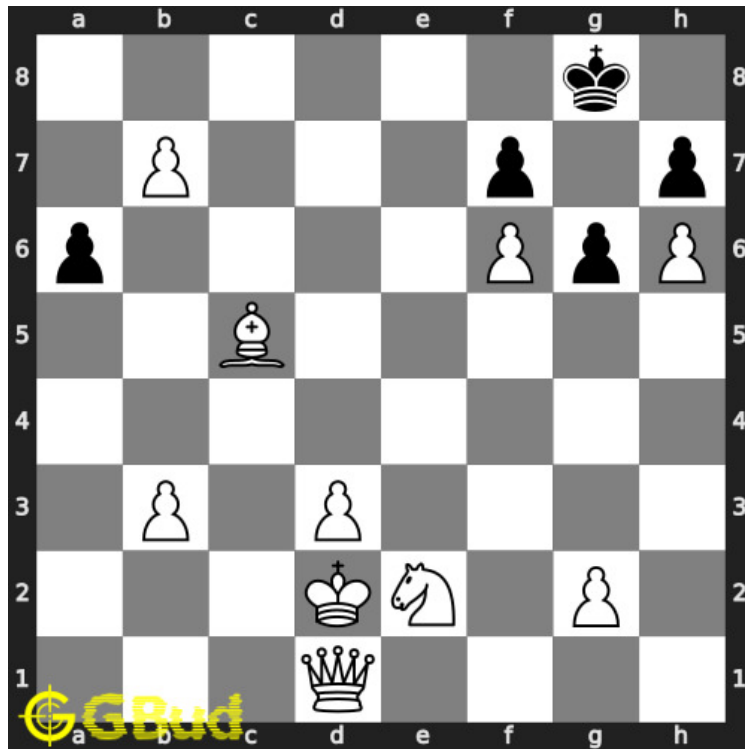


Figure 1.4: b7 - Pawn is marching forward for a promotion

1.2.1.3 Move 2

Move by black

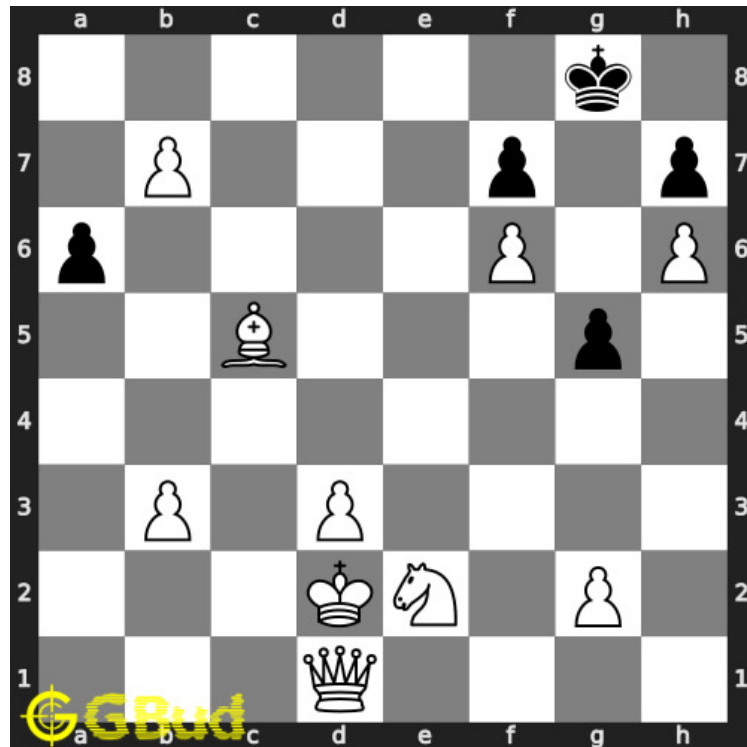


Figure 1.5: g5 - Your opponent has no moves other than moving one of their pawns

1.2.1.4 Move 3

Move by white

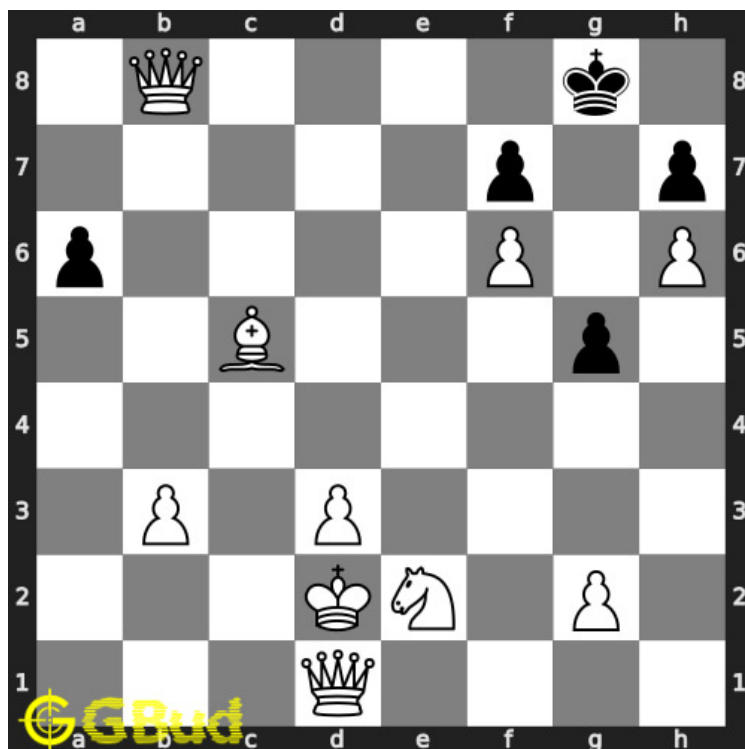


Figure 1.6: $b8=Q\#$ - A promotion of pawn to a queen would result in a checkmate as the king has no free squares to move.

1.2.2 Solution 2

1.2.2.1 Initial board position

This is the initial board position of medium chess puzzle 0024.

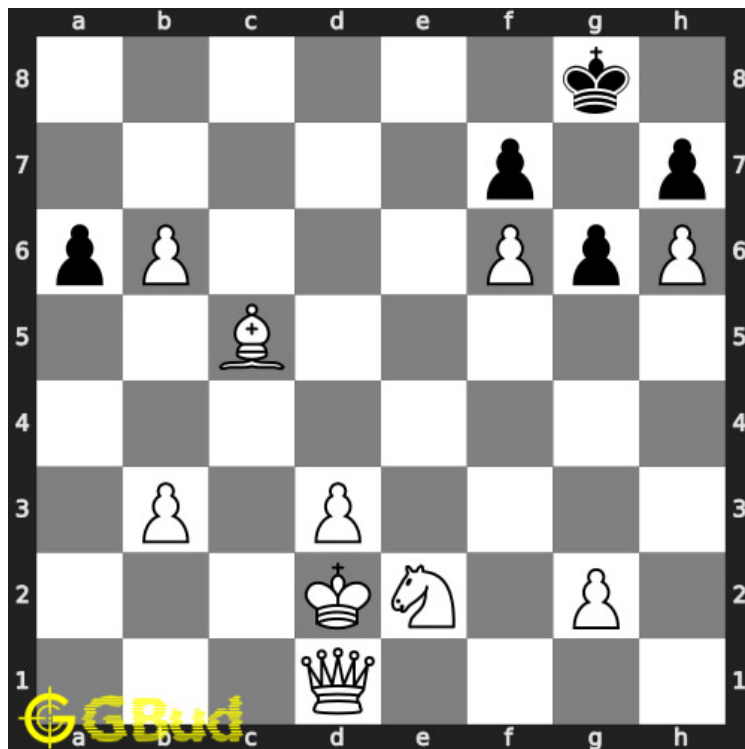


Figure 1.7: Initial board position of medium chess puzzle 0024

1.2.2.2 Move 1

Move by white

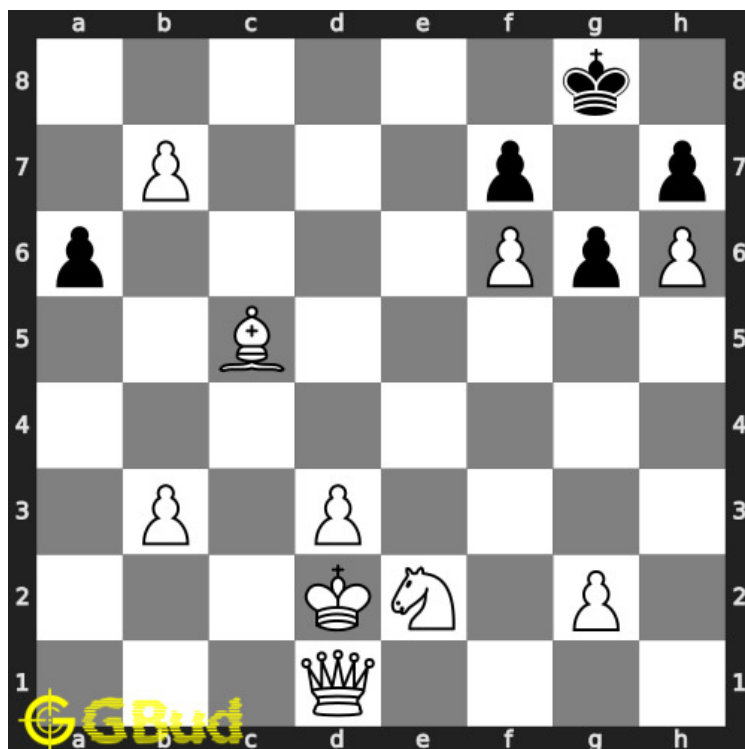


Figure 1.8: b7 - Pawn is marching forward for a promotion

1.2.2.3 Move 2

Move by black

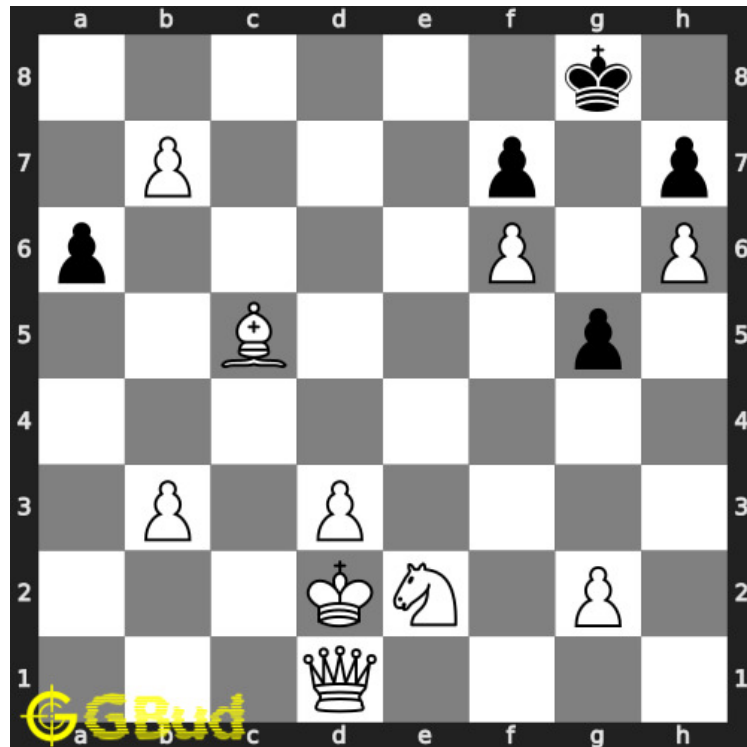


Figure 1.9: g5 - Your opponent has no moves other than moving one of their pawns

1.2.2.4 Move 3

Move by white

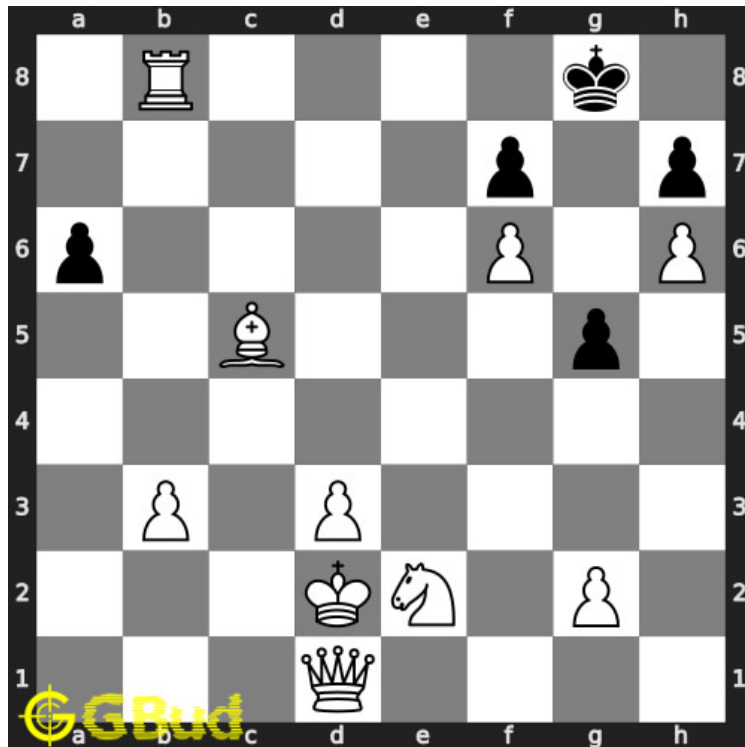


Figure 1.10: $b8=R\#$ - A promotion of pawn to a rook would also result in a checkmate as the king has no free squares to move.

1.2.3 Right moves for the solution to the medium chess puzzle 0024

Based on the objective of the puzzle, you have to make the right moves. Following are the right moves

1. $b7, b8=Q\#$
2. $b7, b8=R\#$

1.2.4 Explanation for the moves

1. $b7$ - Pawn is marching forward for a promotion
2. $b8=Q\#$ - A promotion of pawn to a queen would result in a checkmate as the king has no free squares to move.
3. $b8=R\#$ - A promotion of pawn to a rook would also result in a checkmate as the king has no free squares to move.
4. $g5$ - Your opponent has no moves other than moving one of their pawns
5. For right move - Some times a lowest value piece such as a pawn could be useful in ending the game. You know it.

6. For wrong move - You should have used the pawn to end the game.
Dont give up yet

1.3 Categories of medium chess puzzle 0024

This medium chess puzzle falls in these categories.

1. [Medium chess puzzles](#)
2. [Mate in 2 puzzles in chess](#)
3. [Endgame puzzles in chess](#)
4. [Promotion puzzles in chess](#)

1.4 How to view the solution to medium chess puzzle 0024

To view the [solution to this puzzle](#), follow the steps given below

1. Go to the [puzzle page](#)
2. Click the solution button (Key as shown [below](#)) to view the solution



Figure 1.11: Click the solution button to view solutions @ <https://gbud.in/gzyzqy2>

1.5 How to get help for moves in the medium chess puzzle 0024

To get help or the possible next moves in the puzzle, , follow the steps given below

1. Go to the [puzzle page](#)
2. Click the help button (exclamation mark as shown [below](#)) to get help or suggestion on next possible [move](#)



Figure 1.12: Click the help button to get help on next move @ <https://gbud.in/gzyzqy2>



Figure 1.13: Solve more medium puzzles @ <https://gbud.in/chsmdpz>



Figure 1.14: Solve other puzzles @ <https://gbud.in/chsgppz>

1.6 Play chess for free

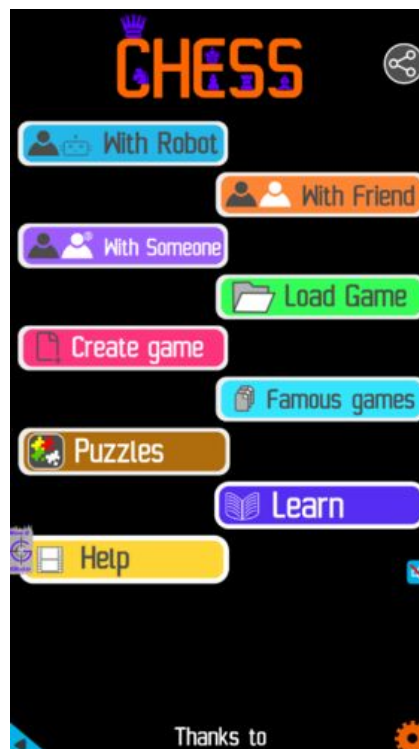


Figure 1.15: Play chess online for free. Solve puzzles and play with friends

Play chess for free at <https://gbud.in/chs>

We present you a platform to play chess online with friends for free. No need to install any app. You can play chess for free without registration or login.

Simple. You can do several chess related activities.

1. [solve chess puzzles](#)
2. [learn about chess](#)

3. [play chess with computer](#)
4. [play chess with friend](#)
5. [create your own chess games](#)
6. [fen viewer](#)
7. [fen editor](#)
8. [fen generator](#)
9. [pgn viewer](#)
10. [chess board editor](#)
11. [view famous chess games.](#)



Figure 1.16: Solve this puzzle online by scanning this QR code or go to the link below

<https://gbud.in/gzyzqy2>

Read the latest article on Medium Chess puzzle # 0024 - Mate in 2 moves by scanning this QR code or click the link

Previous article : [« Medium Chess puzzle # 0023 - Gain rook](#)

Next article : [Medium chess puzzles »](#)

[Back to top](#)

[Contact Us](#)

© GBud Games 2021