



Medium Chess Puzzle # 0023

By

G Bud Games
<https://gbud.in>

September 24, 2021

Contents

1	Medium Chess puzzle # 0023 - Gain rook	3
1.1	Medium chess puzzle 0023	4
1.2	Solution to medium chess puzzle 0023	4
1.2.1	Solution 1	5
1.2.2	Right moves for the solution to the medium chess puzzle 0023	9
1.2.3	Explanation for the moves	9
1.3	Categories of medium chess puzzle 0023	10
1.4	How to view the solution to medium chess puzzle 0023	10
1.5	How to get help for moves in the medium chess puzzle 0023	11
1.6	Play chess for free	12

List of Figures

1.1	Solve this medium chess puzzle 0023. Gain rook @ https://gbud.in/gyql9r2	4
1.2	Solve this medium chess puzzle online with solution @ https://gbud.in/gyql9r2	4
1.3	Initial board position of medium chess puzzle 0023	5
1.4	cx4 - This is a weak move from the opponent since the bishop is having a xray attack on the rook	6
1.5	d3+ - This is a two purpose move. It is giving check to the king and clearing the diagonal for the bishop	7
1.6	Kxd3 - The king captures the pawn since it is not supported	8
1.7	Bxa1 - The bishop captures the rook	9
1.8	Click the solution button to view solutions @ https://gbud.in/gyql9r2	10
1.9	Click the help button to get help on next move @ https://gbud.in/gyql9r2	11
1.10	Solve more medium puzzles @ https://gbud.in/chsmdpz	11
1.11	Solve other puzzles @ https://gbud.in/chsgppz	12
1.12	Play chess online for free. Solve puzzles and play with friends	12
1.13	Solve this puzzle online by scanning this QR code or go to the link below	13

Chapter 1

Medium Chess puzzle # 0023 - Gain rook

Solve this medium chess puzzle and improve your chess games through improvement of your chess strategies and chess tactics.

Puzzle No : 0023

Difficulty level : medium

Description : Gain rook

Next Move : Black

Player level : Intermediate

Short URL for puzzle : <https://gbud.in/gyql9r2>

1.1 Medium chess puzzle 0023

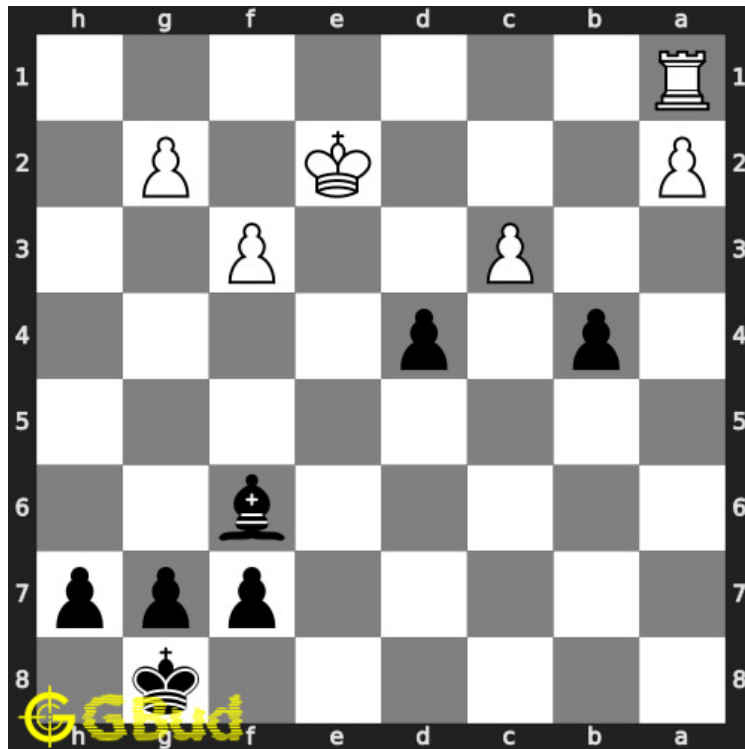


Figure 1.1: Solve this medium chess puzzle 0023. Gain rook @ <https://gbud.in/gyql9r2>



Figure 1.2: Solve this medium chess puzzle online with solution @ <https://gbud.in/gyql9r2>

1.2 Solution to medium chess puzzle 0023

At this puzzle, next [move](#) is by [Black](#). The objective of the puzzle is to gain rook.

See the solution at the [puzzle page](#)

1.2.1 Solution 1

1.2.1.1 Initial board position

This is the initial board position of medium chess puzzle 0023.

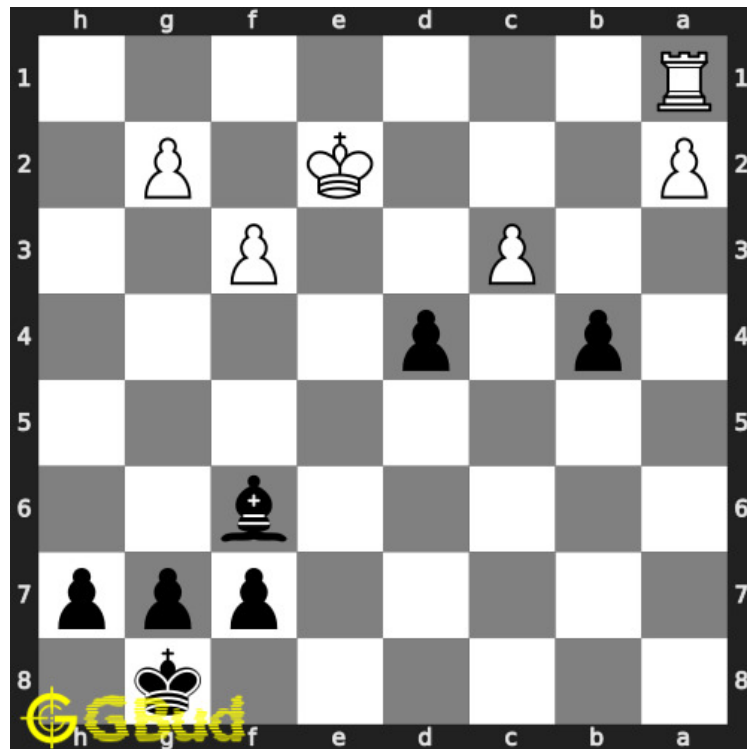


Figure 1.3: Initial board position of medium chess puzzle 0023

1.2.1.2 Move 1

Move by white

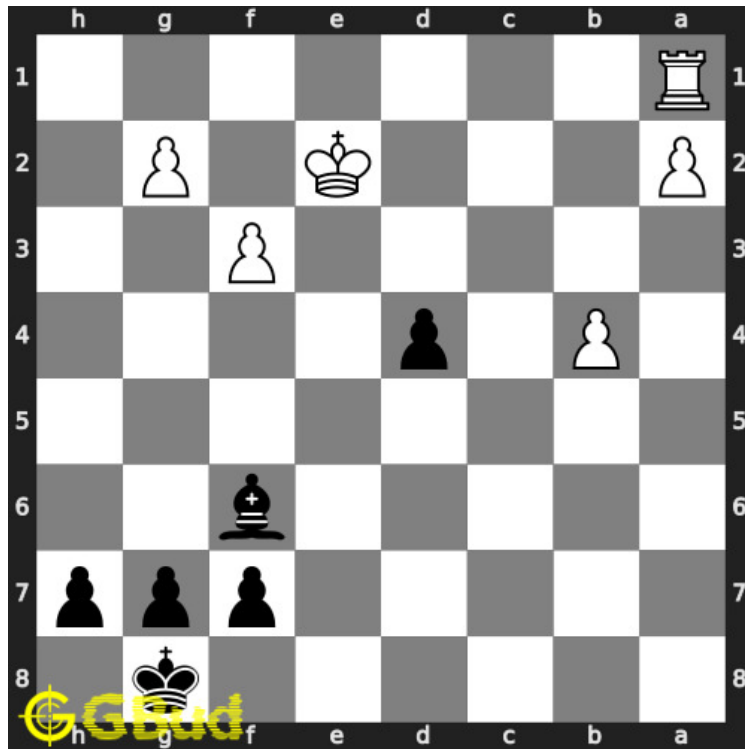


Figure 1.4: cxb4 - This is a weak move from the opponent since the bishop is having a xray attack on the rook

1.2.1.3 Move 2

Move by black

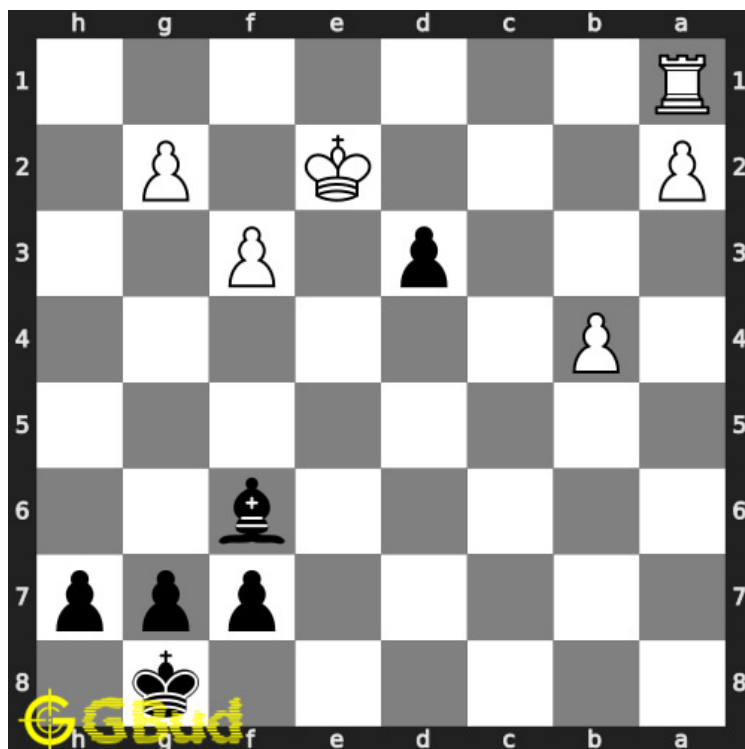


Figure 1.5: d3+ - This is a two purpose move. It is giving check to the king and clearing the diagonal for the bishop

1.2.1.4 Move 3

Move by white

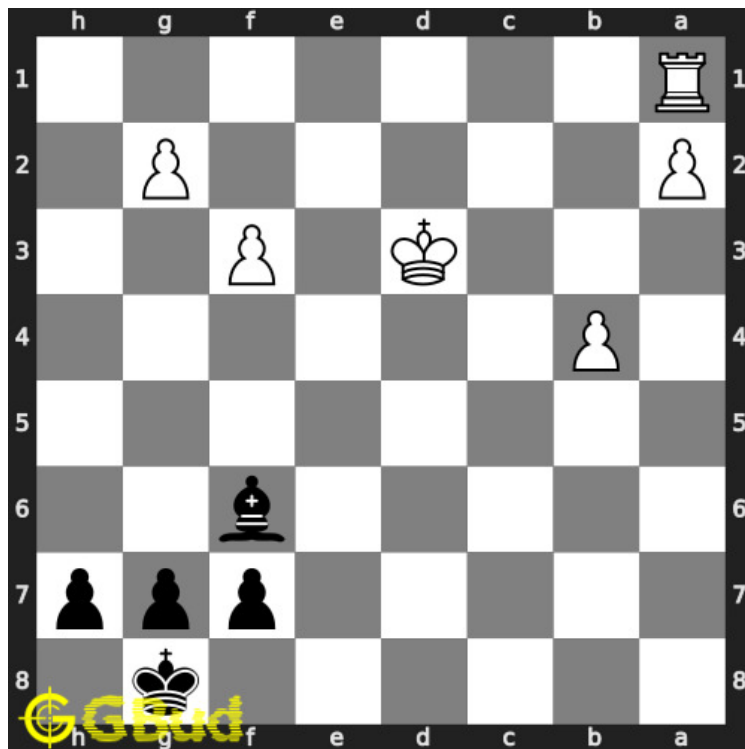


Figure 1.6: Kxd3 - The king captures the pawn since it is not supported

1.2.1.5 Move 4

Move by black

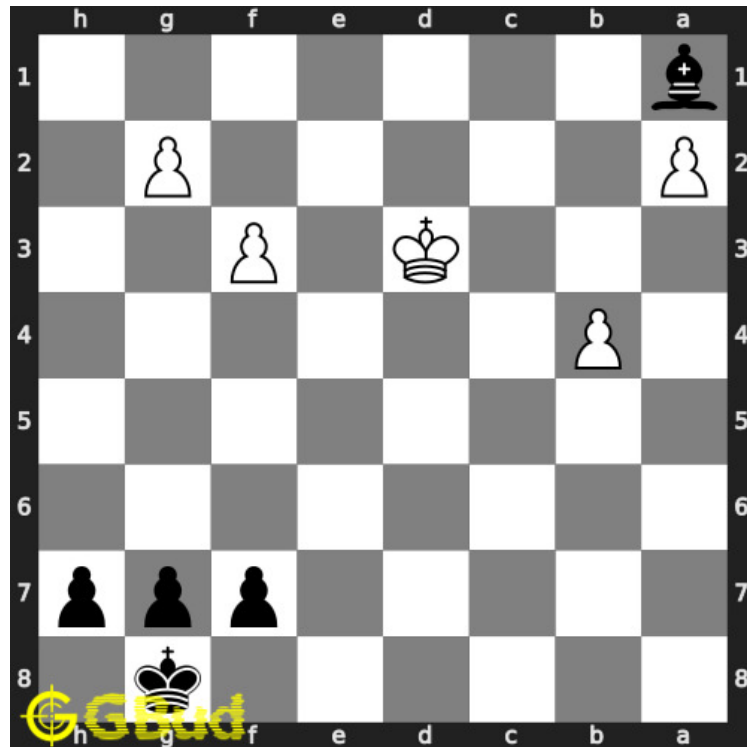


Figure 1.7: Bxa1 - The bishop captures the rook

1.2.2 Right moves for the solution to the medium chess puzzle 0023

Based on the objective of the puzzle, you have to make the right moves. Following are the right moves

1. d3+, Bxa1

1.2.3 Explanation for the moves

1. cxb4 - This is a weak move from the opponent since the bishop is having a xray attack on the rook
2. d3+ - This is a two purpose move. It is giving check to the king and clearing the diagonal for the bishop
3. Kxd3 - The king captures the pawn since it is not supported
4. Bxa1 - The bishop captures the rook
5. For right move - You gained a rook by giving a check. Your attempt is good.
6. For wrong move - You could have threatened the king and gained the rook. You can do better.

1.3 Categories of medium chess puzzle 0023

This medium chess puzzle falls in these categories.

1. [Medium chess puzzles](#)
2. [Gain puzzles in chess](#)

1.4 How to view the solution to medium chess puzzle 0023

To view the [solution to this puzzle](#), follow the steps given below

1. Go to the [puzzle page](#)
2. Click the solution button (Key as shown [below](#)) to view the solution

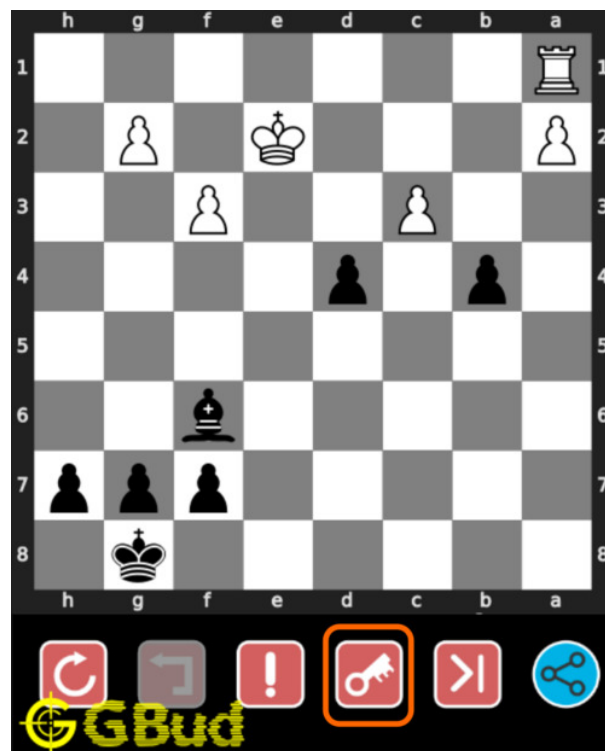


Figure 1.8: Click the solution button to view solutions @ <https://gbud.in/gyql9r2>

1.5 How to get help for moves in the medium chess puzzle 0023

To get help or the possible next moves in the puzzle, , follow the steps given below

1. Go to the [puzzle page](#)
2. Click the help button (exclamation mark as shown [below](#)) to get help or suggestion on next possible [move](#)



Figure 1.9: Click the help button to get help on next move @ <https://gbud.in/gyql9r2>



Figure 1.10: Solve more medium puzzles @ <https://gbud.in/chsmdpz>



Figure 1.11: Solve other puzzles @ <https://gbud.in/chsgppz>

1.6 Play chess for free

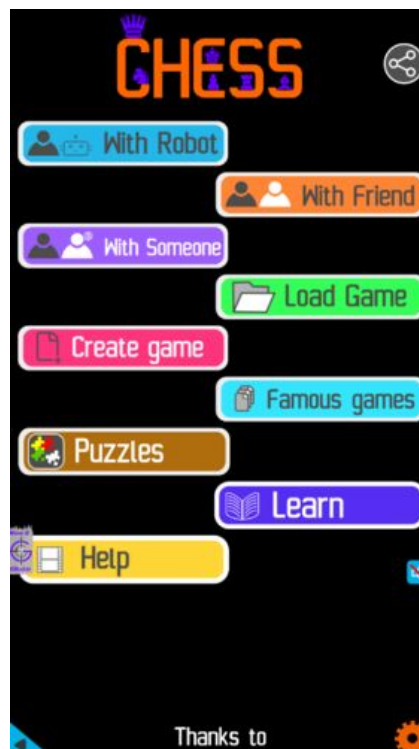


Figure 1.12: Play chess online for free. Solve puzzles and play with friends

Play chess for free at <https://gbud.in/chs>

We present you a platform to play chess online with friends for free. No need to install any app. You can play chess for free without registration or login.

Simple. You can do several chess related activities.

1. [solve chess puzzles](#)
2. [learn about chess](#)

3. [play chess with computer](#)
4. [play chess with friend](#)
5. [create your own chess games](#)
6. [fen viewer](#)
7. [fen editor](#)
8. [fen generator](#)
9. [pgn viewer](#)
10. [chess board editor](#)
11. [view famous chess games.](#)



Figure 1.13: Solve this puzzle online by scanning this QR code or go to the link below

<https://gbud.in/gyql9r2>

Read the latest article on Medium Chess puzzle # 0023 - Gain rook by scanning this QR code or click the link

Previous article : [« Medium Chess puzzle # 0022 - Mate in 2 moves](#)

Next article : [Medium chess puzzles »](#)

[Back to top](#)

[Contact Us](#)

© GBud Games 2021