



Medium Chess Puzzle # 0020

By

G Bud Games
<https://gbud.in>

September 23, 2021

Contents

1	Medium chess puzzle - # 0020 - Mate in 2 moves	3
1.1	Medium chess puzzle 0020	4
1.2	Solution to medium chess puzzle 0020	4
1.2.1	Right moves for the solution to the medium chess puzzle 0020	5
1.2.2	Explanation for the moves	5
1.3	Categories of medium chess puzzle 0020	5
1.4	How to view the solution to medium chess puzzle 0020	5
1.5	How to get help for moves in the medium chess puzzle 0020	6
1.6	Play chess for free	8

List of Figures

1.1	Solve this medium chess puzzle 0020. Mate in 2 moves @ https://gbud.in/gp48f32	4
1.2	Solve this medium chess puzzle online with solution @ https://gbud.in/gp48f32	4
1.3	Click the solution button to view solutions @ https://gbud.in/gp48f32	6
1.4	Click the help button to get help on next move @ https://gbud.in/gp48f32	7
1.5	Solve more medium puzzles @ https://gbud.in/chsmdpz	7
1.6	Solve other puzzles @ https://gbud.in/chsgppz	7
1.7	Play chess online for free. Solve puzzles and play with friends	8
1.8	Solve this puzzle online by scanning this QR code or go to the link below	9

Chapter 1

Medium chess puzzle - # 0020 - Mate in 2 moves

Solve this medium chess puzzle and improve your chess games through improvement of your chess strategies and chess tactics.

Puzzle No : 0020

Difficulty level : medium

Description : Mate in 2 moves

Next Move : White

Player level : Intermediate

Short URL for puzzle : <https://gbud.in/gp48f32>

1.1 Medium chess puzzle 0020

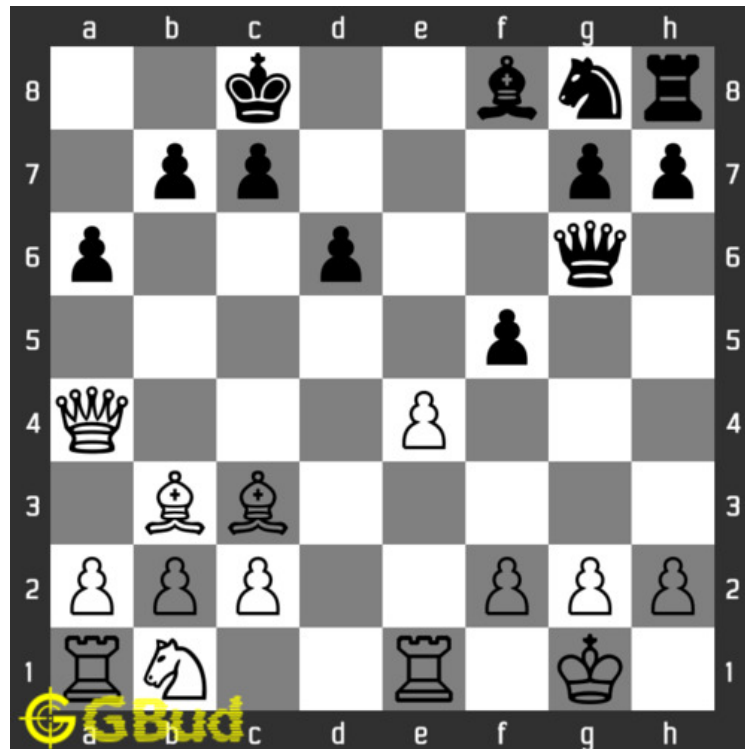


Figure 1.1: Solve this medium chess puzzle 0020. Mate in 2 moves @ <https://gbud.in/gp48f32>



Figure 1.2: Solve this medium chess puzzle online with solution @ <https://gbud.in/gp48f32>

1.2 Solution to medium chess puzzle 0020

At this puzzle, next **move** is by **White**. The objective of the puzzle is to Mate in 2 moves.

See the solution at the [puzzle page](#)

1.2.1 Right moves for the solution to the medium chess puzzle 0020

Based on the objective of the puzzle, you have to make the right moves. Following are the right moves

1. exf5, Qe8#
2. exf5, Re8#

1.2.2 Explanation for the moves

1. exf5 - This has two purposes. It threatens the queen and open the file for the rook
2. Qxf5 - The queen is forced to move from its square where it was defending e8
3. For right move - With a single move of a pawn you achieved two purposes. Good work
4. For wrong move - With a single move of a pawn, you would have reached a great situation. Look carefully

1.3 Categories of medium chess puzzle 0020

This medium chess puzzle falls in these categories.

1. [Medium chess puzzles](#)
2. [Mate in 2 puzzles in chess](#)
3. [Endgame puzzles in chess](#)

1.4 How to view the solution to medium chess puzzle 0020

To view the [solution to this puzzle](#), follow the steps given below

1. Go to the [puzzle page](#)
2. Click the solution button (Key as shown [below](#)) to view the solution



Figure 1.3: Click the solution button to view solutions @ <https://gbud.in/gp48f32>

1.5 How to get help for moves in the medium chess puzzle 0020

To get help or the possible next moves in the puzzle, , follow the steps given below

1. Go to the [puzzle page](#)
2. Click the help button (exclamation mark as shown [below](#)) to get help or suggestion on next possible [move](#)



Figure 1.4: Click the help button to get help on next move @ <https://gbud.in/gp48f32>



Figure 1.5: Solve more medium puzzles @ <https://gbud.in/chsmdpz>



Figure 1.6: Solve other puzzles @ <https://gbud.in/chsgppz>

1.6 Play chess for free

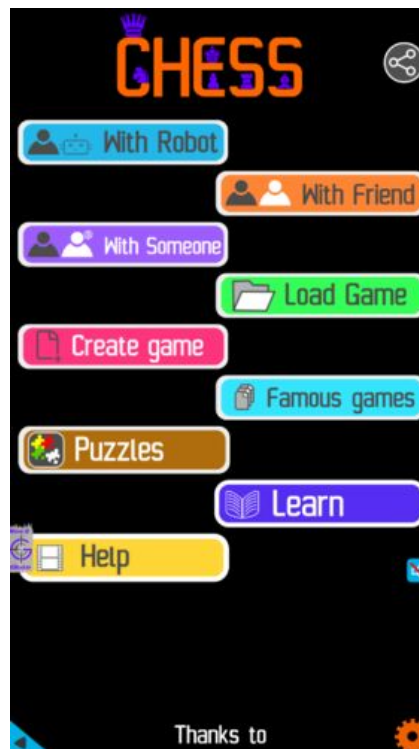


Figure 1.7: Play chess online for free. Solve puzzles and play with friends

Play chess for free at <https://gbud.in/chs>

We present you a platform to [play chess online with friends for free](#). No need to install any app. You can [play chess for free without registration or login](#).

Simple. You can do several chess related activities.

1. [solve chess puzzles](#)
2. [learn about chess](#)
3. [play chess with computer](#)
4. [play chess with friend](#)
5. [create your own chess games](#)
6. [fen viewer](#)
7. [fen editor](#)
8. [fen generator](#)
9. [pgn viewer](#)
10. [chess board editor](#)
11. [view famous chess games](#).



Figure 1.8: Solve this puzzle online by scanning this QR code or go to the link below

<https://gbud.in/gp48f32>

Read the latest article on Medium chess puzzle - # 0020 - Mate in 2 moves by scanning this QR code or click the link

Previous article : [« Medium chess puzzle - # 0019 - You lost your rook. What would you do now](#)

Next article : [medium Chess puzzle # 0021 - Mate in 2 moves »](#)

[Back to top](#)

[Contact Us](#)

© GBud Games 2021