



Medium Chess Puzzle # 0015

By

G Bud Games
<https://gbud.in>

September 23, 2021

Contents

1	Medium chess puzzle - # 0015 - Which moves will make you lose	3
1.1	Medium chess puzzle 0015	4
1.2	Solution to Medium chess puzzle 0015	4
1.3	How to view the solution to Medium chess puzzle 0015 . .	5
1.4	How to get help for moves in the Medium chess puzzle 0015	6
1.5	Play chess for free	7

List of Figures

1.1	Solve this Medium chess puzzle 0015. Which moves will make you lose @ https://gbud.in/g1fzjn2	4
1.2	Solve this medium chess puzzle online with solution @ https://gbud.in/g1fzjn2	4
1.3	Click the solution button to view solutions @ https://gbud.in/g1fzjn2	5
1.4	Click the help button to get help on next move @ https://gbud.in/g1fzjn2	6
1.5	Solve more medium puzzles @ https://gbud.in/chsmdpz	6
1.6	Solve other puzzles @ https://gbud.in/chsgppz	7
1.7	Play chess online for free. Solve puzzles and play with friends	7
1.8	Solve this puzzle online by scanning this QR code or go to the link below	8

Chapter 1

Medium chess puzzle - #0015 - Which moves will make you lose

Solve this Medium chess puzzle and improve your chess games through improvement of your chess strategies and chess tactics.

Puzzle No : 0015

Difficulty level : medium

Description : Which moves will make you lose

Next Move : White

Player level : Intermediate

Short URL for puzzle : <https://gbud.in/g1fzjn2>

1.1 Medium chess puzzle 0015

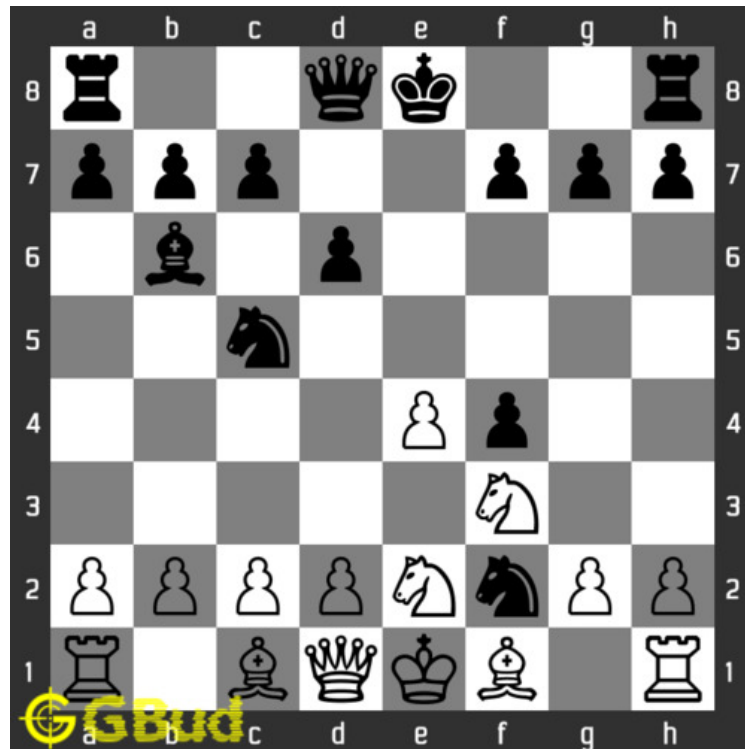


Figure 1.1: Solve this Medium chess puzzle 0015. Which moves will make you lose @ <https://gbud.in/g1fzjn2>



Figure 1.2: Solve this medium chess puzzle online with solution @ <https://gbud.in/g1fzjn2>

1.2 Solution to Medium chess puzzle 0015

At this puzzle, next **move** is by **White**. The objective of the puzzle is to identify the moves that will lead to a **checkmate** and make you lose. The opponent has just moves their **knight** to **square** f2 and it is **forking** both your **queen** and **rook** at the same time. Another thing to note it that the knight is not supported. This will tempt you to **capture** the knight. If you do so you would fall into the trap set by the opponent. This is a kind of decoy. Their knight would move to d3 which would result in a double discovered attack and a checkmate. So you should not move your

king. This is one of the moves to avoid. If you move the **pawn** at c file without moving the **king** would also lead to a **checkmate**, as the square d3 would not be supported. The knight would move to d3 and results in a checkmate.

See the solution at the [puzzle page](#)

1.3 How to view the solution to Medium chess puzzle 0015

To view the [solution to this puzzle](#), follow the steps given below

1. Go to the [puzzle page](#)
2. Click the solution button (Key as shown [below](#)) to view the solution



Figure 1.3: Click the solution button to view solutions @ <https://gbud.in/g1fzjn2>

1.4 How to get help for moves in the Medium chess puzzle 0015

To get help or the possible next moves in the puzzle, , follow the steps given below

1. Go to the [puzzle page](#)
2. Click the help button (exclamation mark as shown [below](#)) to get help or suggestion on next possible [move](#)



Figure 1.4: Click the help button to get help on next move @ <https://gbud.in/g1fzjn2>



Figure 1.5: Solve more medium puzzles @ <https://gbud.in/chsmdpz>



Figure 1.6: Solve other puzzles @ <https://gbud.in/chsgppz>

1.5 Play chess for free

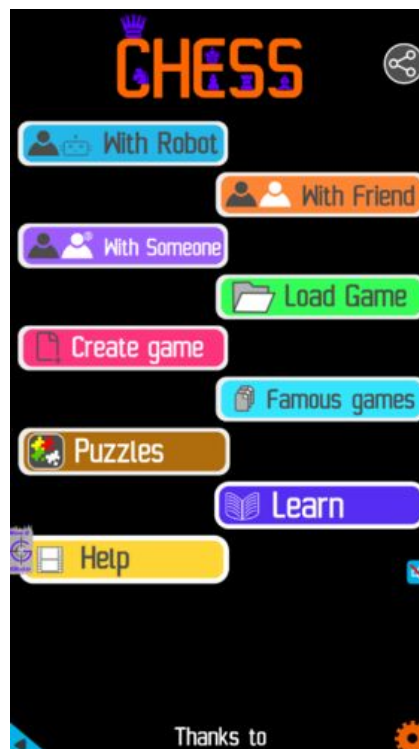


Figure 1.7: Play chess online for free. Solve puzzles and play with friends

Play chess for free at <https://gbud.in/chs>

We present you a platform to play chess online with friends for free. No need to install any app. You can play chess for free without registration or login.

Simple. You can do several chess related activities.

1. [solve chess puzzles](#)
2. [learn about chess](#)

3. [play chess with computer](#)
4. [play chess with friend](#)
5. [create your own chess games](#)
6. [fen viewer](#)
7. [fen editor](#)
8. [fen generator](#)
9. [pgn viewer](#)
10. [chess board editor](#)
11. [view famous chess games.](#)



Figure 1.8: Solve this puzzle online by scanning this QR code or go to the link below

<https://gbud.in/g1fzjn2>

Read the latest article on Medium chess puzzle - # 0015 - Which moves will make you lose by scanning this QR code or click the link

Previous article : [« Medium chess puzzle - # 0014 - Remove support to queen](#)

Next article : [Medium chess puzzle - # 0016 - Checkmate in two moves »](#)

[Back to top](#)

[Contact Us](#)

© GBud Games 2021