



Medium Chess Puzzle # 0009

By

G Bud Games
<https://gbud.in>

September 23, 2021

Contents

1	Medium chess puzzle - # 0009 - will you fall into the trap	3
1.1	Medium chess puzzle 0009	4
1.2	Solution to Medium chess puzzle 0009	4
1.3	How to view the solution to Medium chess puzzle 0009 . .	5
1.4	How to get help for moves in the Medium chess puzzle 0009	6
1.5	Play chess for free	7

List of Figures

1.1	Solve this Medium chess puzzle 0009. will you fall into the trap @ https://gbud.in/g416m42	4
1.2	Solve this medium chess puzzle online with solution @ https://gbud.in/g416m42	4
1.3	Click the solution button to view solutions @ https://gbud.in/g416m42	5
1.4	Click the help button to get help on next move @ https://gbud.in/g416m42	6
1.5	Solve more medium puzzles @ https://gbud.in/chsmdpz	6
1.6	Solve other puzzles @ https://gbud.in/chsgppz	7
1.7	Play chess online for free. Solve puzzles and play with friends	7
1.8	Solve this puzzle online by scanning this QR code or go to the link below	8

Chapter 1

Medium chess puzzle - # 0009 - will you fall into the trap

Solve this Medium chess puzzle and improve your chess games through improvement of your chess strategies and chess tactics.

Puzzle No : 0009

Difficulty level : medium

Description : will you fall into the trap

Next Move : White

Player level : Intermediate

Short URL for puzzle : <https://gbud.in/g416m42>

1.1 Medium chess puzzle 0009

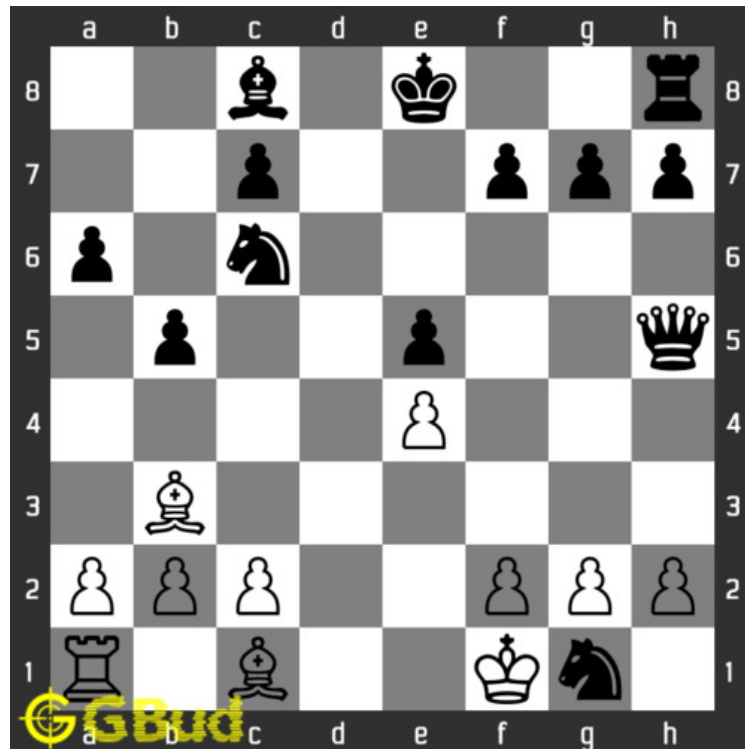


Figure 1.1: Solve this Medium chess puzzle 0009. will you fall into the trap @ <https://gbud.in/g416m42>



Figure 1.2: Solve this medium chess puzzle online with solution @ <https://gbud.in/g416m42>

1.2 Solution to Medium chess puzzle 0009

At this puzzle, next **move** is by **White**. The objective of the puzzle is whether will you fall into the trap set by the opponent. Your opponent has just captured your **knight**. You may be tempted to capture the knight as it is not supported. Actually it is a **magnetsacrifice** by your opponent so that you will move your king to a tactically weaker square. If you capture the knight, your opponent will **checkmate** in next **move** by moving their **queen** to **d1**. This checkmate is also called **back-rank mate** as your king is blocked by your own **pieces**.

You have four options to avoid this trap

1. Block the queen's access to d1. This can be done by moving your [pawn](#) in f file to f3.
2. Defend the square d1. This can be done in two ways.
 - Release the access to d1 for your [rook](#) at a1. If you move your [bishop](#) to e3, the rook will attack the queen if it moves there
 - make access for your bishop to d1. If you move your pawn in c file to c3, your bishop will attack the queen if it moves there
3. Have a square free for your king to move. If you move the pawn from g2 to g3, your king can move to g3 if queen gives a check.

See the solution at the [puzzle page](#)

1.3 How to view the solution to Medium chess puzzle 0009

To view the [solution to this puzzle](#), follow the steps given below

1. Go to the [puzzle page](#)
2. Click the solution button (Key as shown [below](#)) to view the solution



Figure 1.3: Click the solution button to view solutions @ <https://gbud.in/g416m42>

1.4 How to get help for moves in the Medium chess puzzle 0009

To get help or the possible next moves in the puzzle, , follow the steps given below

1. Go to the [puzzle page](#)
2. Click the help button (exclamation mark as shown [below](#)) to get help or suggestion on next possible [move](#)



Figure 1.4: Click the help button to get help on next move @ <https://gbud.in/g416m42>



Figure 1.5: Solve more medium puzzles @ <https://gbud.in/chsmdpz>



Figure 1.6: Solve other puzzles @ <https://gbud.in/chsgppz>

1.5 Play chess for free

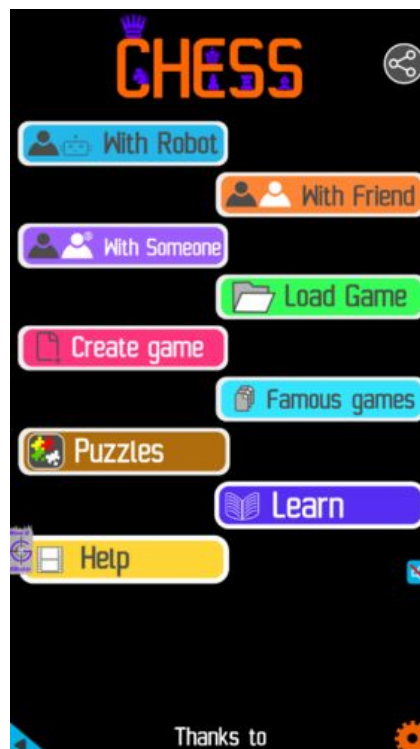


Figure 1.7: Play chess online for free. Solve puzzles and play with friends

Play chess for free at <https://gbud.in/chs>

We present you a platform to play chess online with friends for free. No need to install any app. You can play chess for free without registration or login.

Simple. You can do several chess related activities.

1. [solve chess puzzles](#)
2. [learn about chess](#)

3. [play chess with computer](#)
4. [play chess with friend](#)
5. [create your own chess games](#)
6. [fen viewer](#)
7. [fen editor](#)
8. [fen generator](#)
9. [pgn viewer](#)
10. [chess board editor](#)
11. [view famous chess games.](#)



Figure 1.8: Solve this puzzle online by scanning this QR code or go to the link below

<https://gbud.in/g416m42>

Read the latest article on Medium chess puzzle - # 0009 - will you fall into the trap by scanning this QR code or click the link

Previous article : [« Medium chess puzzle - # 0008 - Avoid losing the queen](#)

Next article : [Medium chess puzzle - # 0010 - gain a piece »](#)

[Back to top](#)

[Contact Us](#)

© GBud Games 2021