



Medium Chess Puzzle # 0006

By

G Bud Games
<https://gbud.in>

September 23, 2021

Contents

1	Medium chess puzzle - # 0006 - Checkmate in 2 moves	3
1.1	Medium chess puzzle 0006	4
1.2	Solution to Medium chess puzzle 0006	4
1.3	How to view the solution to Medium chess puzzle 0006 . .	5
1.4	How to get help for moves in the Medium chess puzzle 0006	5
1.5	Play chess for free	7

List of Figures

1.1	Solve this Medium chess puzzle 0006. Checkmate in 2 moves @ https://gbud.in/gd38l02	4
1.2	Solve this medium chess puzzle online with solution @ https://gbud.in/gd38l02	4
1.3	Click the solution button to view solutions @ https://gbud.in/gd38l02	5
1.4	Click the help button to get help on next move @ https://gbud.in/gd38l02	6
1.5	Solve more medium puzzles @ https://gbud.in/chsmdpz	6
1.6	Solve other puzzles @ https://gbud.in/chsgppz	6
1.7	Play chess online for free. Solve puzzles and play with friends	7
1.8	Solve this puzzle online by scanning this QR code or go to the link below	8

Chapter 1

Medium chess puzzle - # 0006 - Checkmate in 2 moves

Solve this Medium chess puzzle and improve your chess games through improvement of your chess strategies and chess tactics.

Puzzle No : 0006

Difficulty level : medium

Description : Checkmate in 2 moves

Next Move : White

Player level : Intermediate

Short URL for puzzle : <https://gbud.in/gd38l02>

1.1 Medium chess puzzle 0006

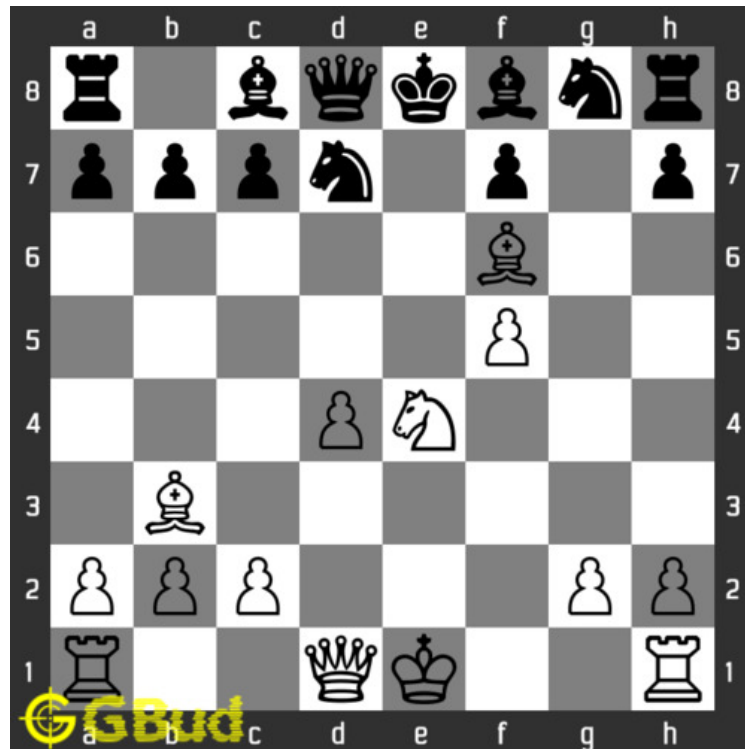


Figure 1.1: Solve this Medium chess puzzle 0006. Checkmate in 2 moves @ <https://gbud.in/gd38l02>



Figure 1.2: Solve this medium chess puzzle online with solution @ <https://gbud.in/gd38l02>

1.2 Solution to Medium chess puzzle 0006

At this puzzle, next **move** is by **White**. The objective of the puzzle is to **checkmate** in 2 **moves**. To have a checkmate in 2 moves, you need to sacrifice your **bishop** so that the **king** will be forced to move a tactically weaker **square**. For this, you have to **capture** the **pawn** at **f7** and give a **check** to the opponent. The king has no other options other than capturing the bishop. After your bishop is captured, you give another check by moving your **queen** to **h5** and **checkmate**. This process of sacrificing a piece and attracts the opponents **piece** to a tactically weaker square is called **magnet sacrifice**.

See the solution at the [puzzle page](#)

1.3 How to view the solution to Medium chess puzzle 0006

To view the [solution to this puzzle](#), follow the steps given below

1. Go to the [puzzle page](#)
2. Click the solution button (Key as shown [below](#)) to view the solution



Figure 1.3: Click the solution button to view solutions @ <https://gbud.in/gd38102>

1.4 How to get help for moves in the Medium chess puzzle 0006

To get help or the possible next moves in the puzzle, , follow the steps given below

1. Go to the [puzzle page](#)
2. Click the help button (exclamation mark as shown [below](#)) to get help or suggestion on next possible [move](#)



Figure 1.4: Click the help button to get help on next move @ <https://gbud.in/gd38l02>



Figure 1.5: Solve more medium puzzles @ <https://gbud.in/chsmdpz>



Figure 1.6: Solve other puzzles @ <https://gbud.in/chsgppz>

1.5 Play chess for free

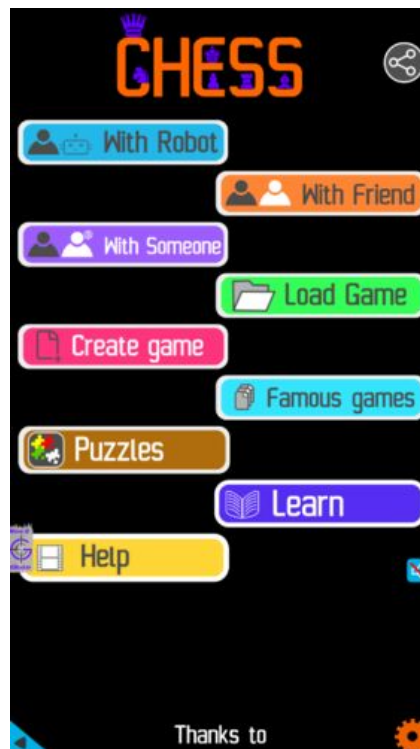


Figure 1.7: Play chess online for free. Solve puzzles and play with friends

Play chess for free at <https://gbud.in/chs>

We present you a platform to play chess online with friends for free. No need to install any app. You can play chess for free without registration or login.

Simple. You can do several chess related activities.

1. solve chess puzzles
2. learn about chess
3. play chess with computer
4. play chess with friend
5. create your own chess games
6. fen viewer
7. fen editor
8. fen generator
9. pgn viewer
10. chess board editor
11. view famous chess games.



Figure 1.8: Solve this puzzle online by scanning this QR code or go to the link below

<https://gbud.in/gd38l02>

Read the latest article on Medium chess puzzle - # 0006 - Checkmate in 2 moves by scanning this QR code or click the link

Previous article : [« Medium chess puzzle - # 0005 - Gain a piece](#)

Next article : [Medium chess puzzle - # 0007 - Capture queen in two moves »](#)

[Back to top](#)

[Contact Us](#)

© GBud Games 2021