



Medium Chess Puzzle # 0003

By

G Bud Games
<https://gbud.in>

September 23, 2021

Contents

1	Medium chess puzzle - # 0003 - Gain a piece	3
1.1	Medium chess puzzle 0003	4
1.2	Solution to Medium chess puzzle 0003	4
1.3	How to view the solution to Medium chess puzzle 0003 . .	5
1.4	How to get help for moves in the Medium chess puzzle 0003	5
1.5	Play chess for free	7

List of Figures

1.1	Solve this Medium chess puzzle 0003. Gain a piece @ https://gbud.in/gtx6gx2	4
1.2	Solve this medium chess puzzle online with solution @ https://gbud.in/gtx6gx2	4
1.3	Click the solution button to view solutions @ https://gbud.in/gtx6gx2	5
1.4	Click the help button to get help on next move @ https://gbud.in/gtx6gx2	6
1.5	Solve more medium puzzles @ https://gbud.in/chsmdpz	6
1.6	Solve other puzzles @ https://gbud.in/chsgppz	6
1.7	Play chess online for free. Solve puzzles and play with friends	7
1.8	Solve this puzzle online by scanning this QR code or go to the link below	8

Chapter 1

Medium chess puzzle - # 0003 - Gain a piece

Solve this Medium chess puzzle and improve your chess games through improvement of your chess strategies and chess tactics.

Puzzle No : 0003

Difficulty level : medium

Description : Gain a piece

Next Move : Black

Player level : Intermediate

Short URL for puzzle : <https://gbud.in/gtx6gx2>

1.1 Medium chess puzzle 0003

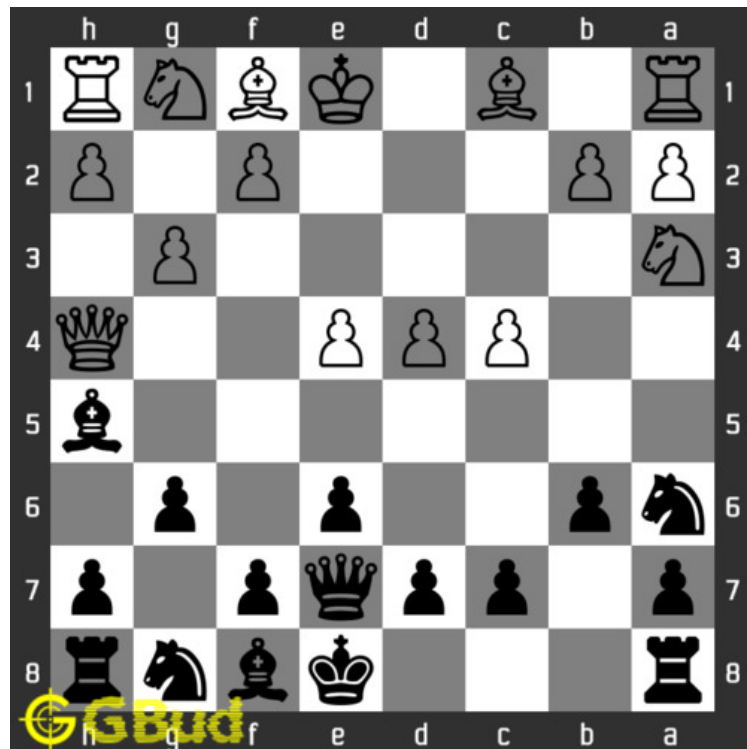


Figure 1.1: Solve this Medium chess puzzle 0003. Gain a piece @ <https://gbud.in/gtx6gx2>



Figure 1.2: Solve this medium chess puzzle online with solution @ <https://gbud.in/gtx6gx2>

1.2 Solution to Medium chess puzzle 0003

At this puzzle, next **move** is by **Black**. The objective of the puzzle is to gain a **pieces**. It is little tricky, but possible. Your **queen** can move to **b4** and give **check** to the **king**. The king can not **move** to any nearby **squares** since they are attacked by your **bishop** and **queen**.

Now the only choice for the opponent is to move their bishop to d2 to block your queens attack. Now the **pawn** at b2 is not supported. Your queen can capture the pawn and attack the **rook** and **knight** at the same time. This is called **fork**. You can gain either a rook or a knight without

losing any of your pieces based on the opponents [move](#). This is how you gain a [piece](#).

See the solution at the [puzzle page](#)

1.3 How to view the solution to Medium chess puzzle 0003

To view the [solution to this puzzle](#), follow the steps given below

1. Go to the [puzzle page](#)
2. Click the solution button (Key as shown [below](#)) to view the solution



Figure 1.3: Click the solution button to view solutions @ <https://gbud.in/gtx6gx2>

1.4 How to get help for moves in the Medium chess puzzle 0003

To get help or the possible next moves in the puzzle, , follow the steps given below

1. Go to the [puzzle page](#)

2. Click the help button (exclamation mark as shown below) to get help or suggestion on next possible move



Figure 1.4: Click the help button to get help on next move @ <https://gbud.in/gtx6gx2>



Figure 1.5: Solve more medium puzzles @ <https://gbud.in/chsmdpz>



Figure 1.6: Solve other puzzles @ <https://gbud.in/chsgppz>

1.5 Play chess for free

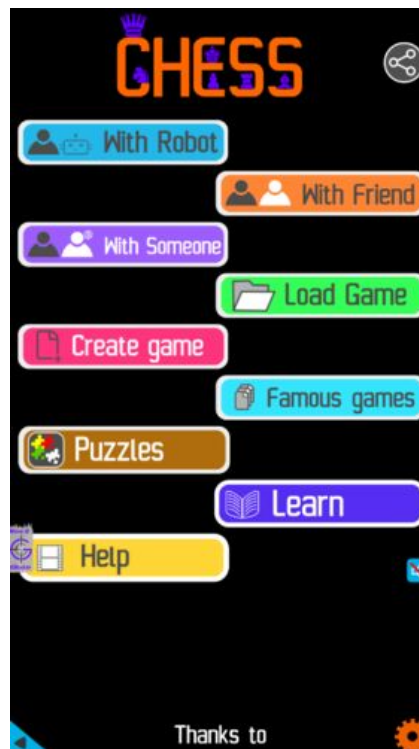


Figure 1.7: Play chess online for free. Solve puzzles and play with friends

Play chess for free at <https://gbud.in/chs>

We present you a platform to play chess online with friends for free. No need to install any app. You can play chess for free without registration or login.

Simple. You can do several chess related activities.

1. solve chess puzzles
2. learn about chess
3. play chess with computer
4. play chess with friend
5. create your own chess games
6. fen viewer
7. fen editor
8. fen generator
9. pgn viewer
10. chess board editor
11. view famous chess games.



Figure 1.8: Solve this puzzle online by scanning this QR code or go to the link below

<https://gbud.in/gtx6gx2>

Read the latest article on Medium chess puzzle - # 0003 - Gain a piece by scanning this QR code or click the link

Previous article : [« Medium chess puzzle - # 0002 - Check mate in two moves](#)

Next article : [Medium chess puzzle - # 0004 - Avoid check mate in one move »](#)

[Back to top](#)

[Contact Us](#)

© GBud Games 2021