



## Medium Chess Puzzle # 0001

By

G Bud Games  
<https://gbud.in>

September 23, 2021

# Contents

<b>1</b>	<b>Medium chess puzzle - # 0001 - Gain Bishop</b>	<b>3</b>
1.1	Medium chess puzzle 0001 . . . . .	4
1.2	Solution to Medium chess puzzle 0001 . . . . .	5

# List of Figures

1.1	Solve this Medium chess puzzle 0001. Gain Bishop @ <a href="https://gbud.in/g76jdq2">https://gbud.in/g76jdq2</a> . . . . .	4
1.2	Solve this medium chess puzzle online with solution @ <a href="https://gbud.in/g76jdq2">https://gbud.in/g76jdq2</a> . . . . .	4
1.3	Board position before knight fork . . . . .	5
1.4	Board position after knight fork . . . . .	6
1.5	King moves closer to knight . . . . .	6
1.6	Knight captures bishop . . . . .	7
1.7	Solve more medium puzzles @ <a href="https://gbud.in/chsmdpz">https://gbud.in/chsmdpz</a> . . . . .	7
1.8	Solve other puzzles @ <a href="https://gbud.in/chsgppz">https://gbud.in/chsgppz</a> . . . . .	7
1.9	Play chess online for free. Solve puzzles and play with friends . . . . .	8
1.10	Solve this puzzle online by scanning this QR code or goto the link below . . . . .	9

# Chapter 1

## Medium chess puzzle - # 0001 - Gain Bishop

Solve this Medium chess puzzle and improve your chess games through improvement of your chess strategies and chess tactics.

Puzzle No : 0001

Difficulty level : Medium

Description : Gain Bishop

Next Move : Black

Player level : Intermediate

## 1.1 Medium chess puzzle 0001

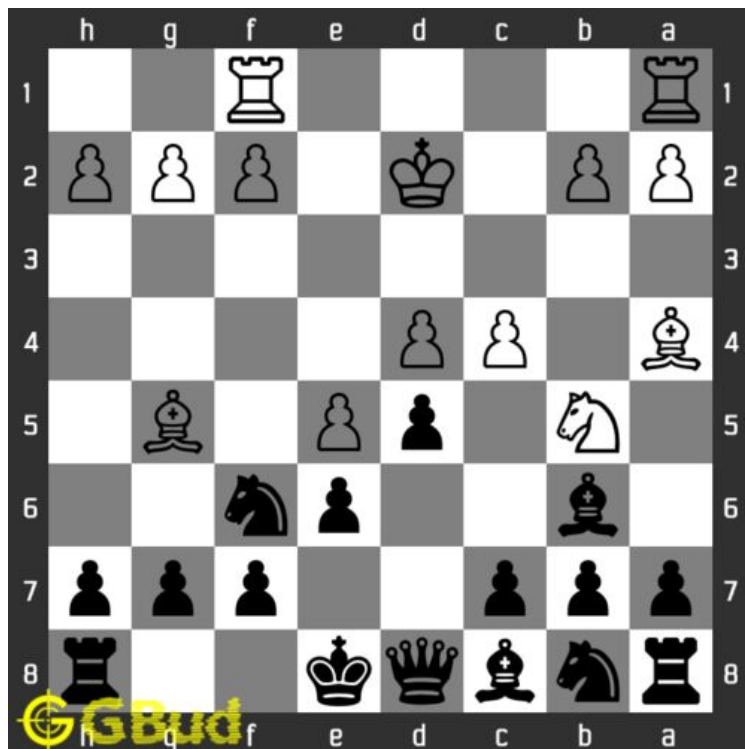


Figure 1.1: Solve this Medium chess puzzle 0001. Gain Bishop @ <https://gbud.in/g76jdg2>



Figure 1.2: Solve this medium chess puzzle online with solution @ <https://gbud.in/g76jdg2>

## 1.2 Solution to Medium chess puzzle 0001

At this puzzle, next **move** is by **black**. The objective of the puzzle is to capture the **Bishop**. There are two **white** bishops available in the **board** at **g5** and **a4**. You have to capture one of these

The bishop at a4 is away from any of your pieces. So the obvious choice is the bishop at g5. This can be captured by giving a **check** to white **king** at d2 by your **knight** at f6. This move is called **knight fork** since it attacks two pieces at the same time. See the **Board position before knight fork**

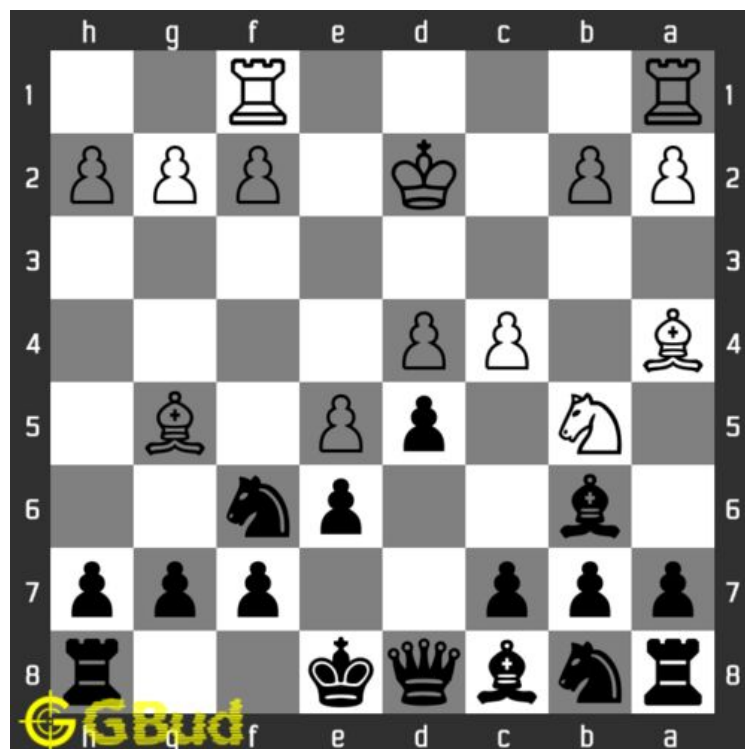


Figure 1.3: Board position before knight fork

The **board position after the knight fork** shows the movement of knight from f6 to e4. Now the king is in check. Since there are no pieces to **capture** the knight at e4, the king needs to move.



Figure 1.4: Board position after knight fork

The king moves to d3 intending to capture the knight at e4.

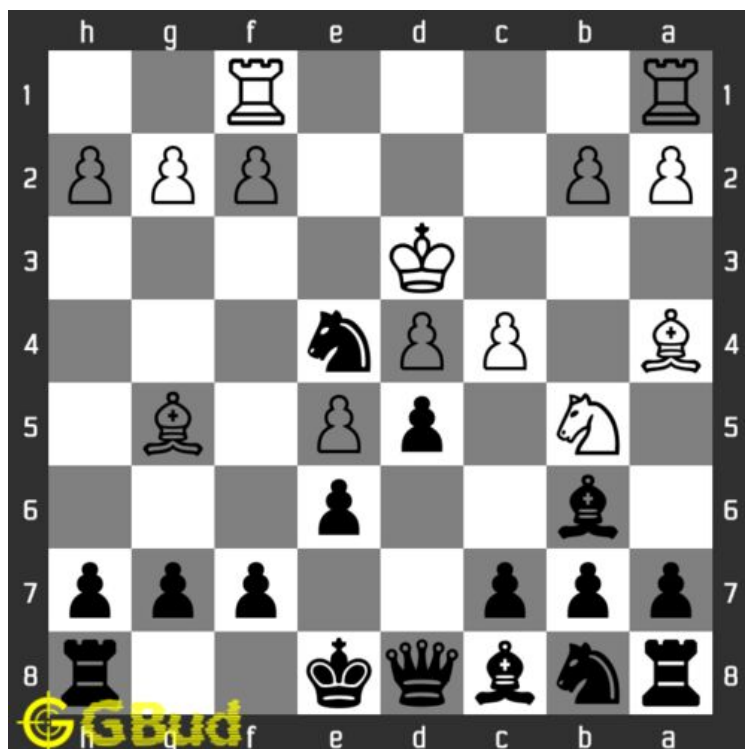


Figure 1.5: King moves closer to knight

The knight at e4 moves to g5 and captures the bishop at g5.

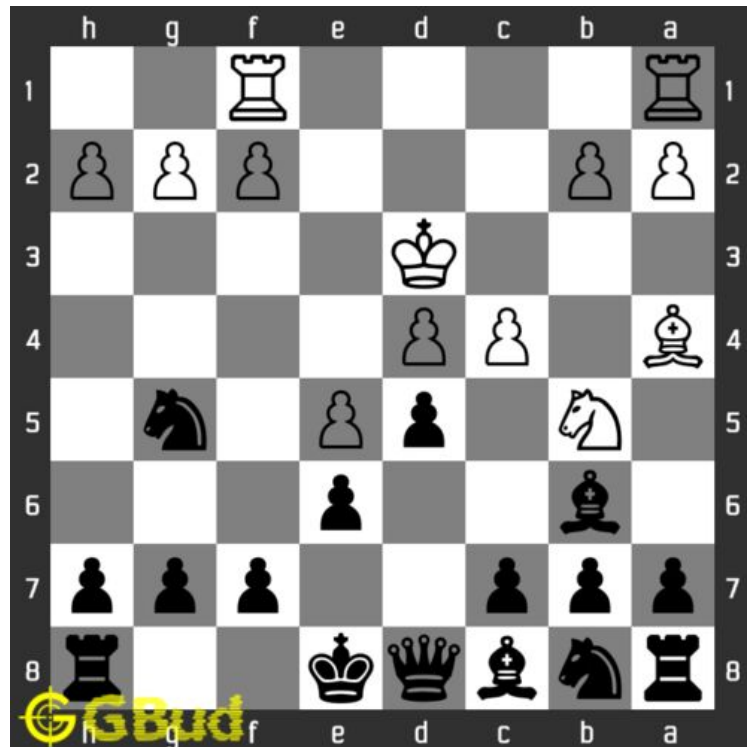


Figure 1.6: Knight captures bishop

This is the solution. You gave a check to the king by knight and targeted the bishop at the same time. this move is called fork and now you gained a bishop.



Figure 1.7: Solve more medium puzzles @ <https://gbud.in/chsmdpz>



Figure 1.8: Solve other puzzles @ <https://gbud.in/chsgppz>



Play chess for free

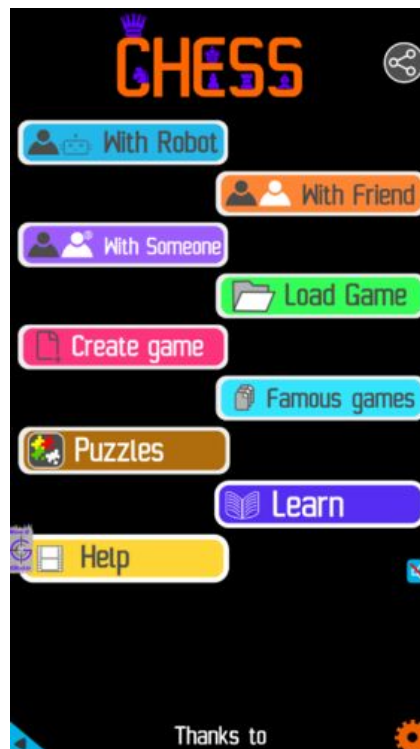


Figure 1.9: Play chess online for free. Solve puzzles and play with friends

Play chess for free at <https://gbud.in/chs>

We present you a platform to play chess online with friends for free. No need to install any app. You can play chess for free without registration or login.

Simple. You can do several chess related activities.

1. solve chess puzzles
2. learn about chess
3. play chess with computer
4. play chess with friend
5. create your own chess games
6. fen viewer
7. fen editor
8. fen generator
9. pgn viewer
10. chess board editor
11. view famous chess games.



Figure 1.10: Solve this puzzle online by scanning this QR code or goto the link below

<https://gbud.in/g76jdq2>

Read the latest article on Medium chess puzzle - # 0001 - Gain Bishop by scanning this QR code or click the link

Previous article : [« Medium chess puzzles](#)

Next article : [Medium chess puzzle - # 0002 - Check mate in two moves »](#)

[Back to top](#)

[Contact Us](#)

© GBud Games 2021