



## Hard Chess Puzzle # 0113

By

G Bud Games  
<https://gbud.in>

January 22, 2022

## Contents

<b>Hard Chess puzzle # 0113 - Mate in 3 moves</b>	<b>3</b>
Hard chess puzzle 0113 . . . . .	3
Solution to hard chess puzzle 0113 . . . . .	4
Solution 1 . . . . .	4
Right moves for the solution to the hard chess puzzle 0113	7
Explanation for the moves . . . . .	7
Categories of hard chess puzzle 0113 . . . . .	8
hard chess puzzle 0113 chart . . . . .	8
How to view the solution to hard chess puzzle 0113 . . . . .	10
How to get help for moves in the hard chess puzzle 0113 . . . . .	11
Play chess for free . . . . .	12

## List of Figures

1	<a href="https://gbud.in/ghl9b23">Solve this hard chess puzzle 0113. Mate in 3 moves @ https://gbud.in/ghl9b23</a> . . . . .	3
2	<a href="https://gbud.in/ghl9b23">Solve this hard chess puzzle online with solution @ https://gbud.in/ghl9b23</a> . . . . .	3
3	Initial board position of hard chess puzzle 0113 . . . . .	4
4	<a href="#">Qxh7+</a> . . . . .	5
5	<a href="#">Kxh7</a> . . . . .	5
6	<a href="#">hxg6+</a> . . . . .	6
7	<a href="#">Kg8</a> . . . . .	6
8	<a href="#">Rh8#</a> . . . . .	7
9	<a href="#">hard chess puzzle 113 chart 1</a> . . . . .	8
10	<a href="#">hard chess puzzle 113 chart 2</a> . . . . .	9
11	<a href="#">hard chess puzzle 113 chart 3</a> . . . . .	9
12	<a href="#">hard chess puzzle 113 chart 4</a> . . . . .	10
13	<a href="https://gbud.in/ghl9b23">Click the solution button to view solutions @ https://gbud.in/ghl9b23</a> . . . . .	10
14	<a href="https://gbud.in/ghl9b23">Click the help button to get help on next move @ https://gbud.in/ghl9b23</a> . . . . .	11
15	<a href="https://gbud.in/chshdpz">Solve more hard puzzles @ https://gbud.in/chshdpz</a> . . . . .	11
16	<a href="https://gbud.in/chsgppz">Solve other puzzles @ https://gbud.in/chsgppz</a> . . . . .	11
17	<a href="#">Play chess online for free. Solve puzzles and play with friends</a> . . . . .	12
18	<a href="#">Solve this puzzle online by scanning this QR code or go to the link below</a> . . . . .	13

## Hard Chess puzzle # 0113 - Mate in 3 moves

Solve this hard chess puzzle and improve your chess games through improvement of your chess strategies and chess tactics. This hard puzzle is a subset of [kids games](#).

Puzzle No : 0113

Difficulty level : hard

Description : Mate in 3 moves

Next Move : White

Player level : Advanced

Short URL for puzzle : <https://gbud.in/ghl9b23>

### Hard chess puzzle 0113

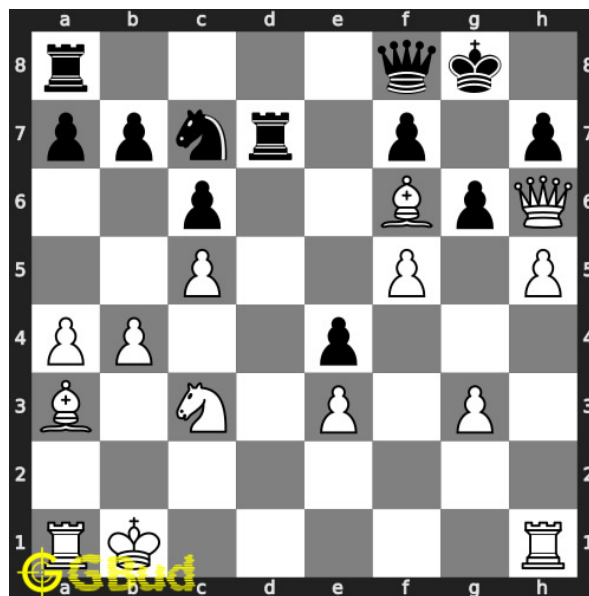


Figure 1: Solve this hard chess puzzle 0113. Mate in 3 moves @ <https://gbud.in/ghl9b23>



Figure 2: Solve this hard chess puzzle online with solution @ <https://gbud.in/ghl9b23>

Dont forget to check out [chess puzzles](#), [easy chess puzzles](#), [medium chess puzzles](#), [hard chess puzzles](#) and [chess puzzles collections](#) .

## Solution to hard chess puzzle 0113

At this puzzle, next [move](#) is by [White](#). The objective of the puzzle is to mate in 3 moves.

See the interactive solution at the [puzzle page](#)

### Solution 1

**Initial board position** This is the initial board position of hard chess puzzle 0113.

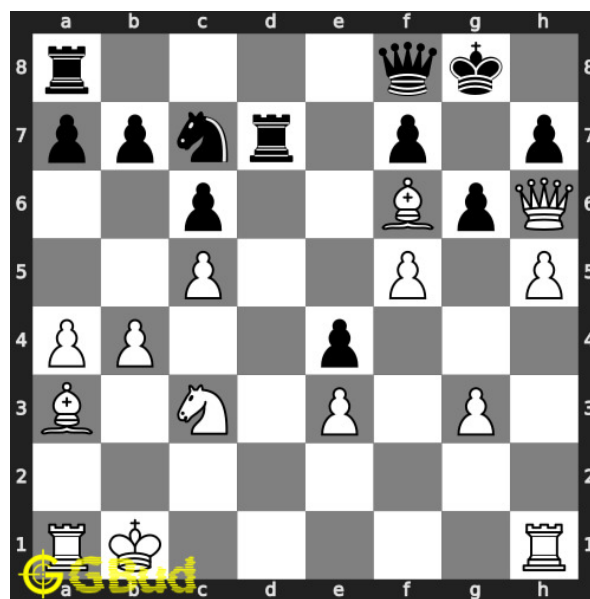


Figure 3: Initial board position of hard chess puzzle 0113

**Move 1** Move by white

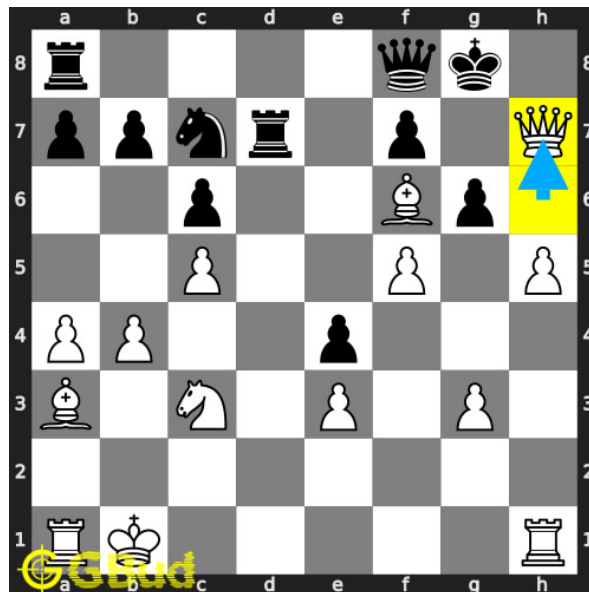


Figure 4: Qxh7+

your [queen sacrifices](#) itself to open the h [file](#).

**Move 2** Move by black

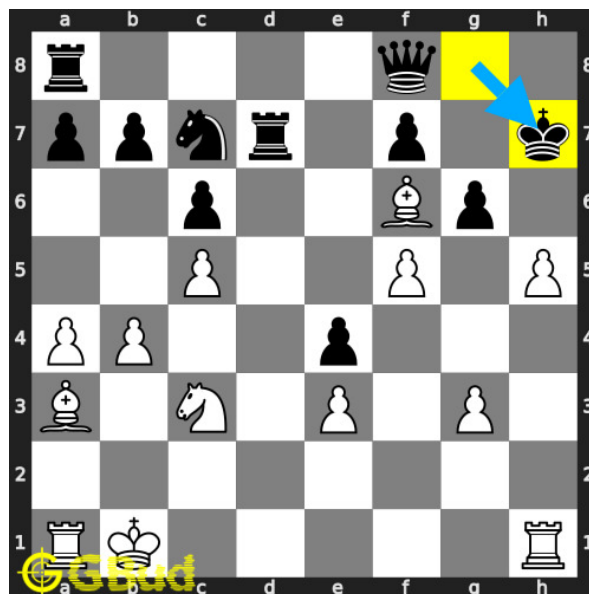


Figure 5: Kxh7

opponent's [king captures](#) your [queen](#). this is a zugzwang [move](#) as oppo-  
nent's [king](#) is forced to respond.

**Move 3** Move by white

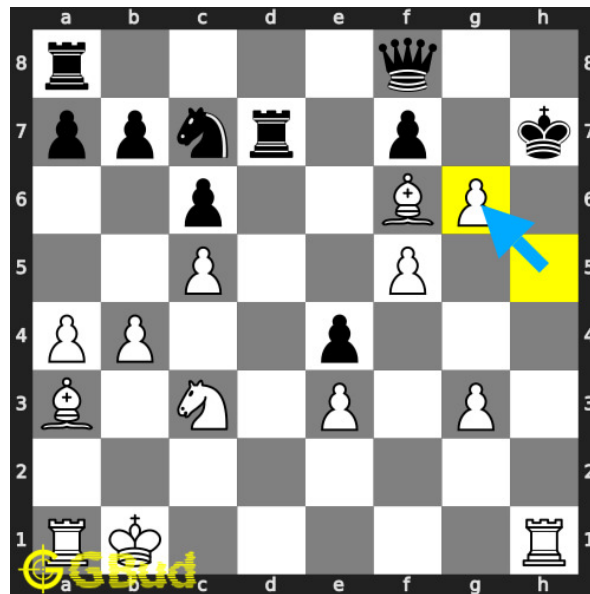


Figure 6: hxg6+

this is a discovered attack since the movement of **pawn** results in **check** from **rook**.

**Move 4** Move by black

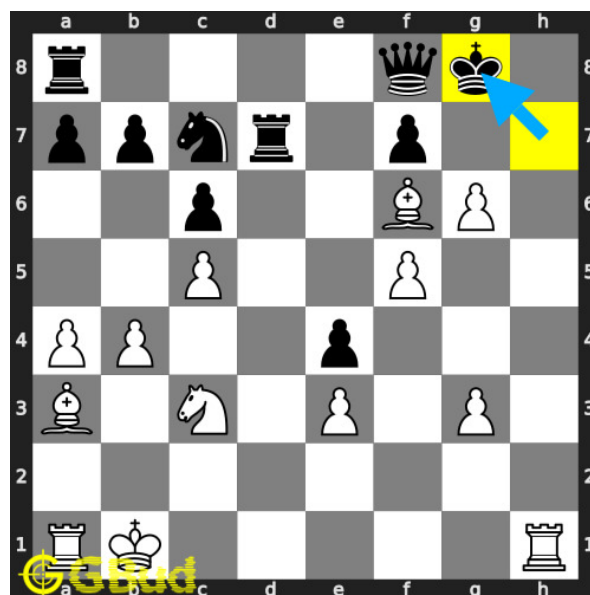


Figure 7: Kg8

opponent's **king** moves to **g8** as it is unable to **capture** the supported **pawn**.

**Move 5** Move by white

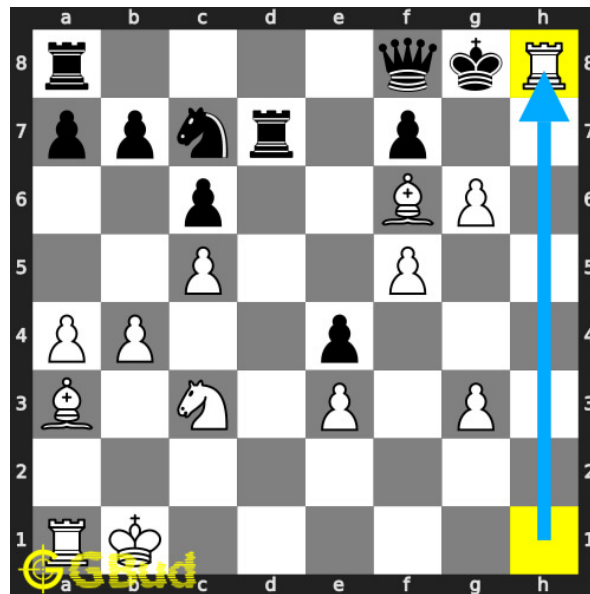


Figure 8: Rh8#

your **rook** moves to **h8** and **checkmate**. opponent's **king** can't **capture** your **rook** since it is supported by the **bishop**. this is how you can **mate** in 3 moves.

### Right moves for the solution to the hard chess puzzle 0113

Based on the objective of the puzzle, you have to make the right moves. Following are the right moves

1. Qxh7+, hxg6+, Rh8#

### Explanation for the moves

1. Qxh7+ - Your queen sacrifices itself to open the h file.
2. Kxh7 - Opponent's king captures your queen. This is a zugzwang move as opponent's king is forced to respond.
3. hxg6+ - This is a discovered attack since the movement of pawn results in check from rook.
4. Kg8 - Opponent's king moves to g8 as it is unable to capture the supported pawn.
5. Rh8# - Your rook moves to h8 and checkmate. Opponent's king can't capture your rook since it is supported by the bishop. This is how you can mate in 3 moves.
6. For right move - With the right sacrifice of your queen you had a checkmate. It was a good strategy

7. For wrong move - You could have had a checkmate after sacrificing the queen. Try again

## Categories of hard chess puzzle 0113

This hard chess puzzle falls in these categories.

1. [Hard chess puzzles](#)
2. [Sacrifice puzzles in chess](#)
3. [Mate in 3 puzzles in chess](#)
4. [Endgame puzzles in chess](#)
5. [Strategy puzzles in chess](#)
6. [Zugzwang puzzles in chess](#)
7. [Pawn puzzles in chess](#)
8. [Rook puzzles in chess](#)
9. [Queen puzzles in chess](#)

### hard chess puzzle 0113 chart



Figure 9: hard chess puzzle 113 chart 1





Figure 10: hard chess puzzle 113 chart 2



Figure 11: hard chess puzzle 113 chart 3

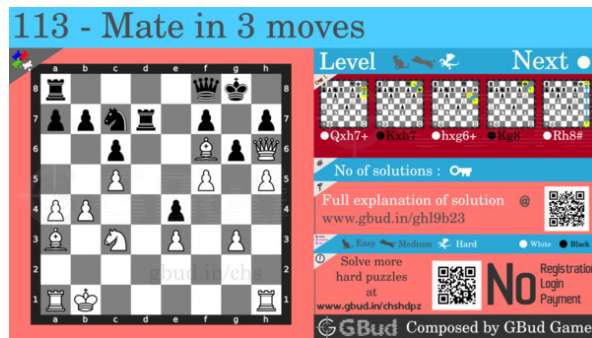


Figure 12: hard chess puzzle 113 chart 4

## How to view the solution to hard chess puzzle 0113

To view the [solution to this puzzle](#), follow the steps given below

1. Go to the [puzzle page](#)
2. Click the solution button (Key as shown [below](#)) to view the solution



Figure 13: Click the solution button to view solutions @ <https://gbud.in/gh19b23>

## How to get help for moves in the hard chess puzzle 0113

To get help or the possible next moves in the puzzle, , follow the steps given below

1. Go to the [puzzle page](#)
2. Click the help button (exclamation mark as shown [below](#)) to get help or suggestion on next possible [move](#)



Figure 14: Click the help button to get help on next move @ <https://gbud.in/ghl9b23>



Figure 15: Solve more hard puzzles @ <https://gbud.in/chshdpz>



Figure 16: Solve other puzzles @ <https://gbud.in/chsgppz>

## Play chess for free

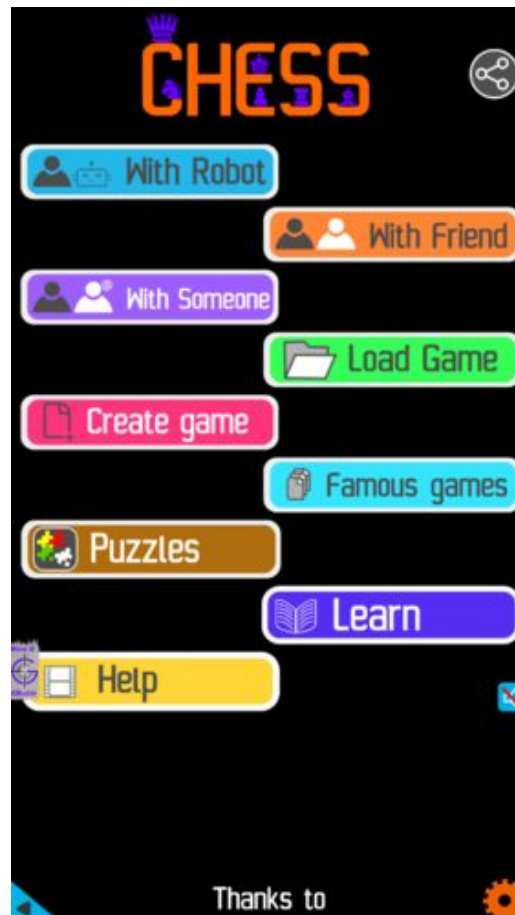


Figure 17: Play chess online for free. Solve puzzles and play with friends

Play chess for free at <https://gbud.in/chs>

We present you a platform to play chess online with friends for free. No need to install any app. You can play chess for free without registration or login.

Simple. You can do several chess related activities.

1. solve chess puzzles
2. learn about chess
3. play chess with computer
4. play chess with friend
5. create your own chess games

6. [fen viewer](#)
7. [fen editor](#)
8. [fen generator](#)
9. [pgn viewer](#)
10. [chess board editor](#)
11. [view famous chess games.](#)



Figure 18: Solve this puzzle online by scanning this QR code or go to the link below

<https://gbud.in/ghl9b23>

Read the latest article on Hard Chess puzzle # 0113 - Mate in 3 moves by scanning this QR code or click the link

Previous article : « [Hard Chess puzzle # 0112 - Mate in 3 moves](#)

Next article : [Hard chess puzzles](#) »

[Back to top](#)

[Contact Us](#)