



Hard Chess Puzzle # 0094

By

G Bud Games
<https://gbud.in>

January 3, 2022

Contents

Hard Chess puzzle # 0094 - Mate in 4 moves	4
Hard chess puzzle 0094	4
Solution to hard chess puzzle 0094	5
Solution 1	5
Right moves for the solution to the hard chess puzzle 0094	9
Explanation for the moves	9
Categories of hard chess puzzle 0094	10
hard chess puzzle 0094 chart	11
How to view the solution to hard chess puzzle 0094	13
How to get help for moves in the hard chess puzzle 0094	14
Play chess for free	15

List of Figures

1	Solve this hard chess puzzle 0094. Mate in 4 moves @ https://gbud.in/g5w6yp3	4
2	Solve this hard chess puzzle online with solution @ https://gbud.in/g5w6yp3	4
3	Initial board position of hard chess puzzle 0094	5
4	Ne6+	6
5	Ke8	6
6	Nd6+	7
7	Rxd6	7
8	Rb8+	8
9	Rd8	8
10	Rxd8#	9
11	hard chess puzzle 94 chart 1	11
12	hard chess puzzle 94 chart 2	12
13	hard chess puzzle 94 chart 3	12
14	hard chess puzzle 94 chart 4	13
15	Click the solution button to view solutions @ https://gbud.in/g5w6yp3	13
16	Click the help button to get help on next move @ https://gbud.in/g5w6yp3	14
17	Solve more hard puzzles @ https://gbud.in/chshdpz	14
18	Solve other puzzles @ https://gbud.in/chsgppz	14
19	Play chess online for free. Solve puzzles and play with friends	15

20 Solve this puzzle online by scanning this QR code or go to
the link below 16

Hard Chess puzzle # 0094 - Mate in 4 moves

Solve this hard chess puzzle and improve your chess games through improvement of your chess strategies and chess tactics. This hard puzzle is a subset of [kids games](#).

Puzzle No : 0094

Difficulty level : hard

Description : Mate in 4 moves

Next Move : White

Player level : Advanced

Short URL for puzzle : <https://gbud.in/g5w6yp3>

Hard chess puzzle 0094

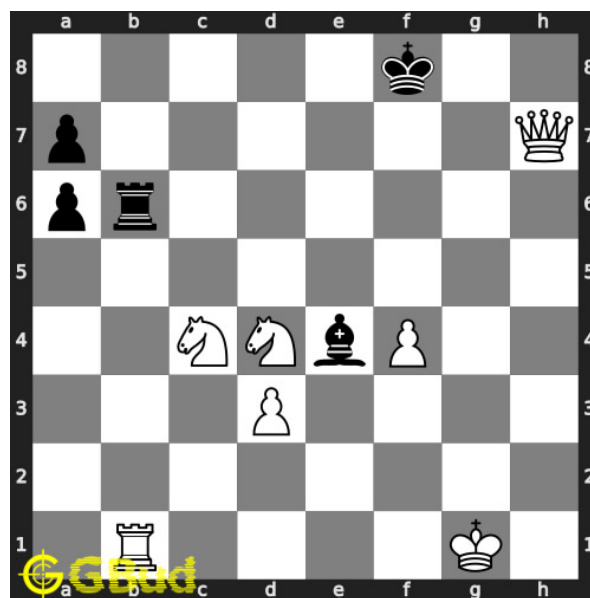


Figure 1: Solve this hard chess puzzle 0094. Mate in 4 moves @ <https://gbud.in/g5w6yp3>



Figure 2: Solve this hard chess puzzle online with solution @ <https://gbud.in/g5w6yp3>

Dont forget to check out [chess puzzles](#), [easy chess puzzles](#), [medium chess puzzles](#), [hard chess puzzles](#) and [chess puzzles collections](#) .

Solution to hard chess puzzle 0094

At this puzzle, next [move](#) is by [White](#). The objective of the puzzle is to mate in 4 moves.

See the interactive solution at the [puzzle page](#)

Solution 1

Initial board position This is the initial board position of hard chess puzzle 0094.

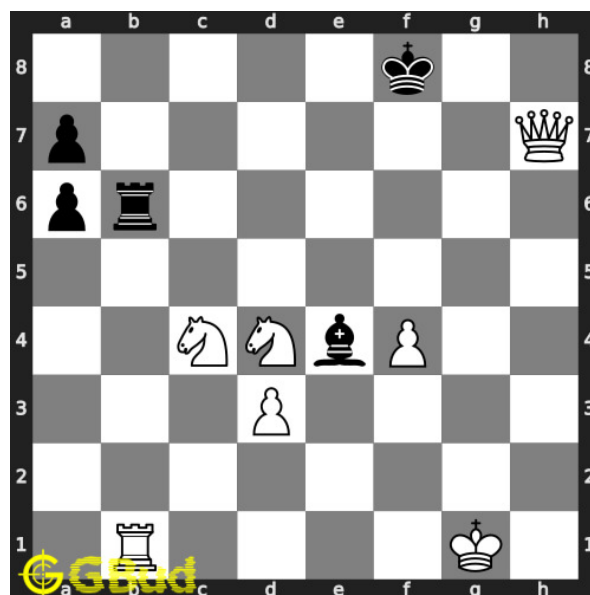


Figure 3: Initial board position of hard chess puzzle 0094

Move 1 Move by white

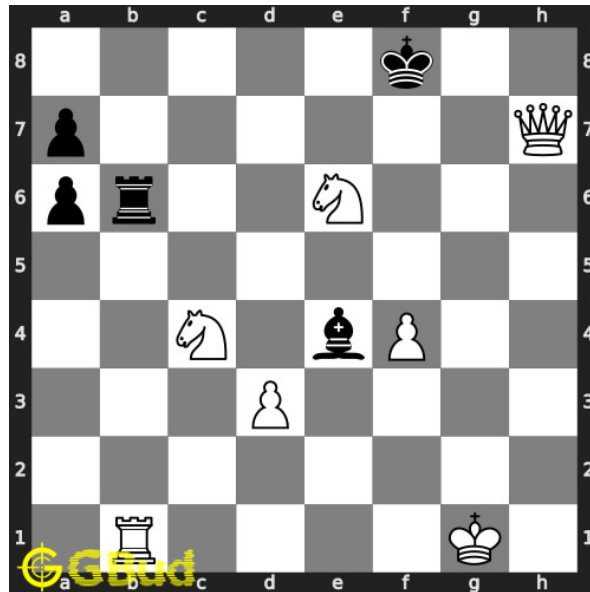


Figure 4: Ne6+

your **knight** gives the **check**. opponent has two **moves**. either they can **move** their **king** or **move** their **rook**. if they **move** their **rook**, you can have a ladder **mate**.

Move 2 Move by black

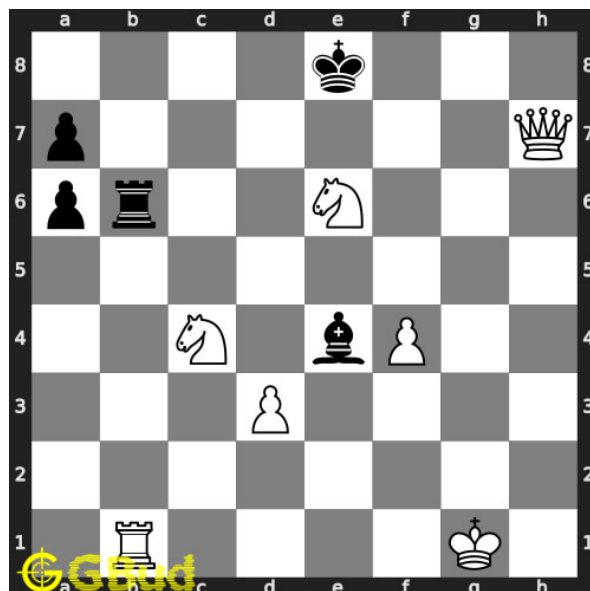


Figure 5: Ke8

opponent chose to **move** their **king**. opponent's **king** can't come to seventh **rank** due to the attack from your **queen**.

Move 3 Move by white

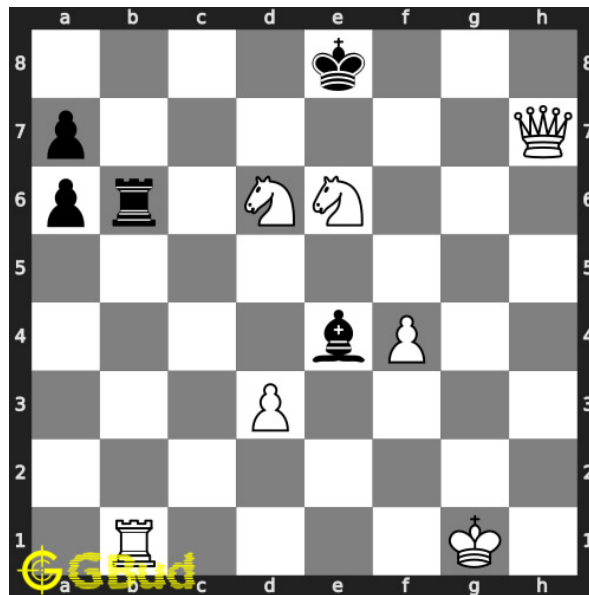


Figure 6: Nd6+

your second knight moves to d7 and gives check to opponent.

Move 4 Move by black

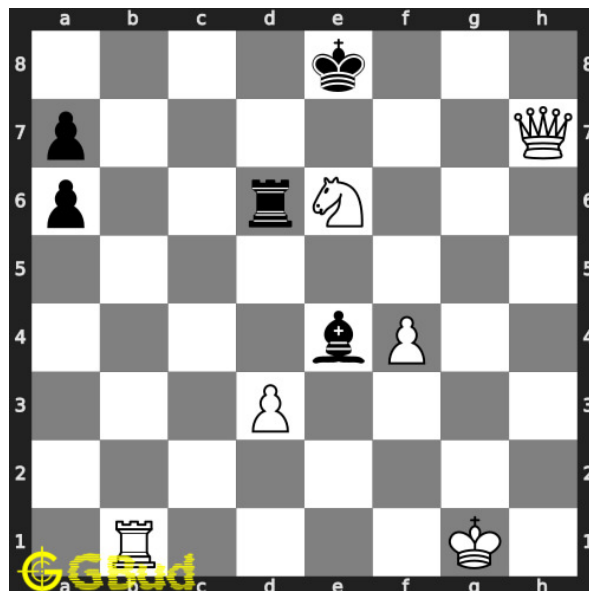


Figure 7: Rxd6

opponent's rook captures your knight to escape from the check threat

Move 5 Move by white

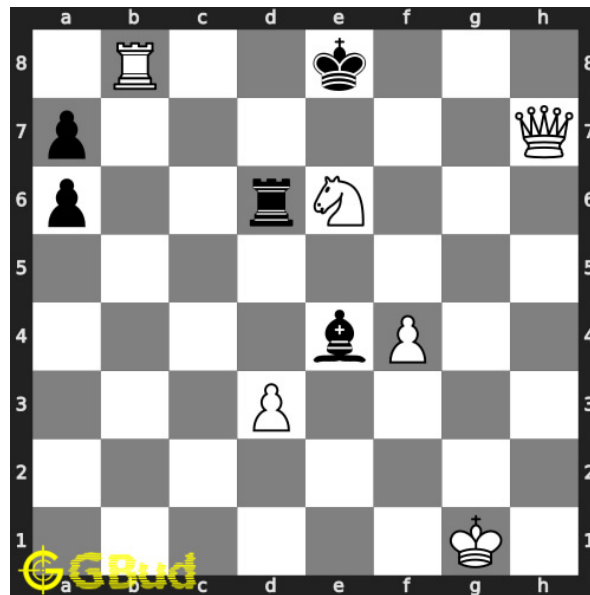


Figure 8: Rb8+

your **rook moves** to b8 and gives **check** to opponent.

Move 6 Move by black

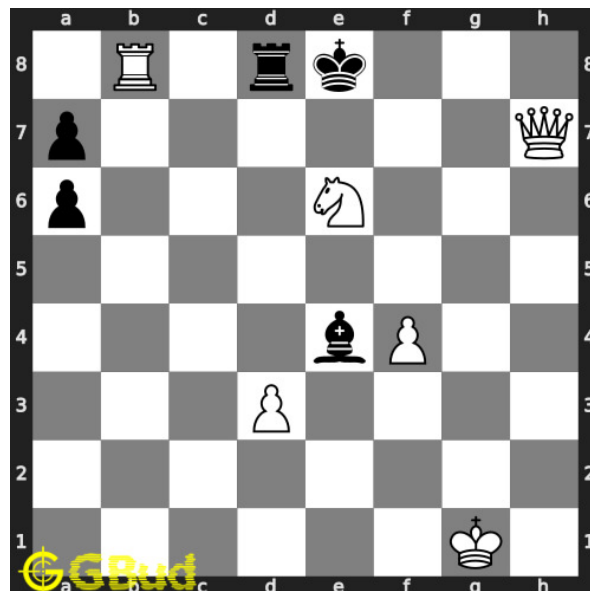


Figure 9: Rd8

opponent's **rook moves** to d8 and blocks the **check** threat.

Move 7 Move by white

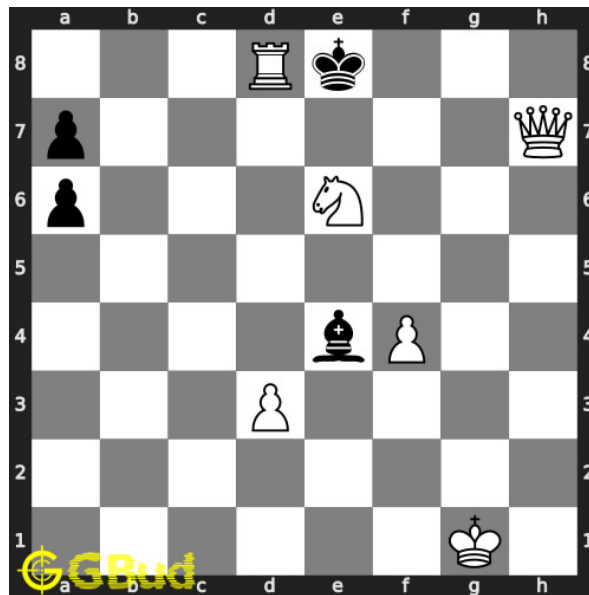


Figure 10: Rxd8#

your **rook captures** opponent's **rook** and **checkmate**. opponent's **king** can't **capture** your **rook** since it is supported by **knight**.. this is how you can **mate** in 4 **moves**.

Right moves for the solution to the hard chess puzzle 0094

Based on the objective of the puzzle, you have to make the right moves. Following are the right moves

1. Ne6+, Nd6+, Rb8+, Rxd8#

Explanation for the moves

1. Ne6+ - your knight gives the check. opponent has two moves. either they can move their king or move their rook. If they move their rook, you can have a ladder mate.
2. Ke8 - opponent chose to move their king. opponent's king can't come to seventh rank due to the attack from your queen.
3. Nd6+ - Your second knight moves to d7 and gives check to opponent.
4. Rxd6 - Opponent's rook captures your knight to escape from the check threat
5. Rb8+ - Your rook moves to b8 and gives check to opponent.
6. Rd8 - opponent's rook moves to d8 and blocks the check threat.

7. Rxd8# - Your rook captures opponent's rook and checkmate. Opponent's king can't capture your rook since it is supported by knight.. This is how you can mate in 4 moves.
8. For right move - Your moves of rook and knights are clever. Keep it up
9. For wrong move - You could have sacrificed one of your knight for mate in 4 moves. Try again

Categories of hard chess puzzle 0094

This hard chess puzzle falls in these categories.

1. [Hard chess puzzles](#)
2. [Endgame puzzles in chess](#)
3. [Strategy puzzles in chess](#)
4. [Mate pattern puzzles in chess](#)
5. [Mate in 4 puzzles in chess](#)
6. [Rook puzzles in chess](#)
7. [Knight puzzles in chess](#)

hard chess puzzle 0094 chart



Figure 11: hard chess puzzle 94 chart 1



Figure 12: hard chess puzzle 94 chart 2



Figure 13: hard chess puzzle 94 chart 3

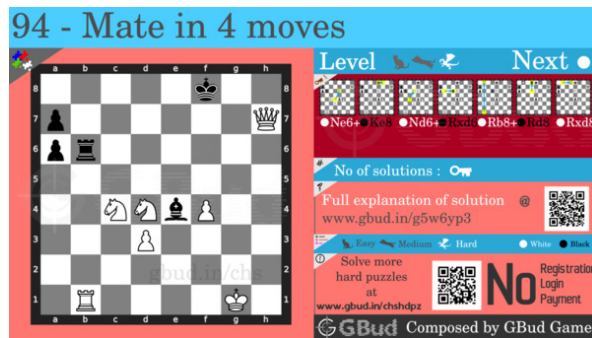


Figure 14: hard chess puzzle 94 chart 4

How to view the solution to hard chess puzzle 0094

To view the [solution to this puzzle](#), follow the steps given below

1. Go to the [puzzle page](#)
2. Click the solution button (Key as shown [below](#)) to view the solution



Figure 15: Click the solution button to view solutions @ <https://gbud.in/g5w6yp3>

How to get help for moves in the hard chess puzzle 0094

To get help or the possible next moves in the puzzle, , follow the steps given below

1. Go to the [puzzle page](#)
2. Click the help button (exclamation mark as shown [below](#)) to get help or suggestion on next possible [move](#)



Figure 16: Click the help button to get help on next move @ <https://gbud.in/g5w6yp3>



Figure 17: Solve more hard puzzles @ <https://gbud.in/chshdpz>



Figure 18: Solve other puzzles @ <https://gbud.in/chsgppz>

Play chess for free

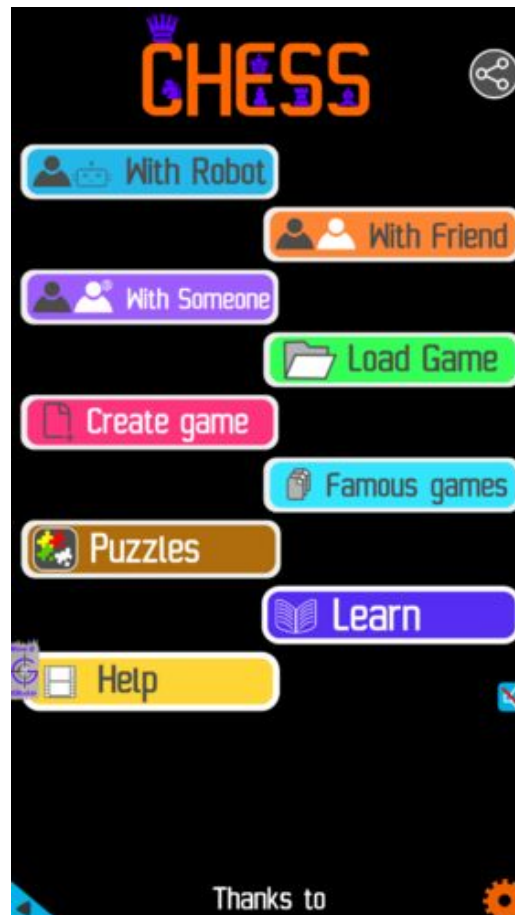


Figure 19: Play chess online for free. Solve puzzles and play with friends

Play chess for free at <https://gbud.in/chs>

We present you a platform to play chess online with friends for free. No need to install any app. You can play chess for free without registration or login.

Simple. You can do several chess related activities.

1. [solve chess puzzles](#)
2. [learn about chess](#)
3. [play chess with computer](#)
4. [play chess with friend](#)
5. [create your own chess games](#)

6. [fen viewer](#)
7. [fen editor](#)
8. [fen generator](#)
9. [pgn viewer](#)
10. [chess board editor](#)
11. [view famous chess games.](#)



Figure 20: Solve this puzzle online by scanning this QR code or go to the link below

<https://gbud.in/g5w6yp3>

Read the latest article on Hard Chess puzzle # 0094 - Mate in 4 moves by scanning this QR code or click the link

Previous article : « [Hard Chess puzzle # 0093 - Mate in 3 moves](#)

Next article : [Hard chess puzzles](#) »

[Back to top](#)

[Contact Us](#)