



Hard Chess Puzzle # 0091

By

G Bud Games
<https://gbud.in>

December 30, 2021

Contents

Hard Chess puzzle # 0091 - Mate in 5 moves	4
Hard chess puzzle 0091	4
Solution to hard chess puzzle 0091	5
Solution 1	5
Right moves for the solution to the hard chess puzzle 0091	10
Explanation for the moves	10
Categories of hard chess puzzle 0091	11
hard chess puzzle 0091 chart	12
How to view the solution to hard chess puzzle 0091	14
How to get help for moves in the hard chess puzzle 0091	15
Play chess for free	16

List of Figures

1	Solve this hard chess puzzle 0091. Mate in 5 moves @ https://gbud.in/gz4kkt3	4
2	Solve this hard chess puzzle online with solution @ https://gbud.in/gz4kkt3	4
3	Initial board position of hard chess puzzle 0091	5
4	Rxc2	6
5	b4	6
6	Qd3+	7
7	Rc3	7
8	Qxc3+	8
9	Ka4	8
10	Ra2+	9
11	Kb5	9
12	Qc6#	10
13	hard chess puzzle 91 chart 1	12
14	hard chess puzzle 91 chart 2	13
15	hard chess puzzle 91 chart 3	13
16	hard chess puzzle 91 chart 4	14
17	Click the solution button to view solutions @ https://gbud.in/gz4kkt3	14
18	Click the help button to get help on next move @ https://gbud.in/gz4kkt3	15
19	Solve more hard puzzles @ https://gbud.in/chshdpz	15
20	Solve other puzzles @ https://gbud.in/chsgppz	15

21	Play chess online for free. Solve puzzles and play with friends	16
22	Solve this puzzle online by scanning this QR code or go to the link below	17

Hard Chess puzzle # 0091 - Mate in 5 moves

Solve this hard chess puzzle and improve your chess games through improvement of your chess strategies and chess tactics. This hard puzzle is a subset of [kids games](#).

Puzzle No : 0091

Difficulty level : hard

Description : Mate in 5 moves

Next Move : Black

Player level : Advanced

Short URL for puzzle : <https://gbud.in/gz4kkt3>

Hard chess puzzle 0091

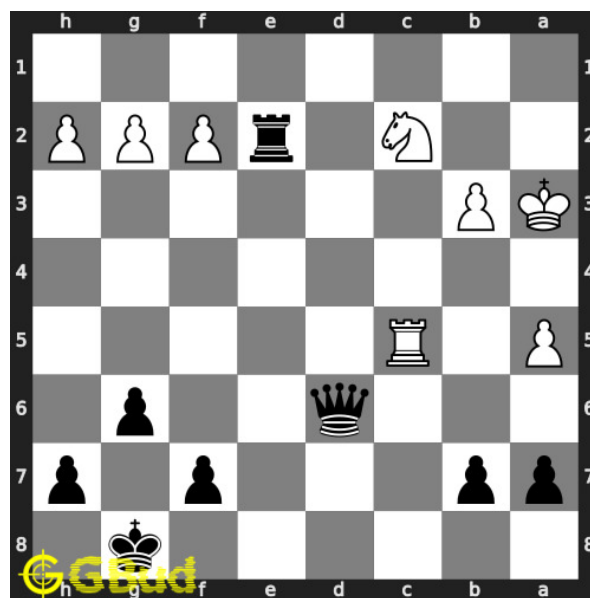


Figure 1: Solve this hard chess puzzle 0091. Mate in 5 moves @ <https://gbud.in/gz4kkt3>



Figure 2: Solve this hard chess puzzle online with solution @ <https://gbud.in/gz4kkt3>

Dont forget to check out [chess puzzles](#), [easy chess puzzles](#), [medium chess puzzles](#), [hard chess puzzles](#) and [chess puzzles collections](#) .

Solution to hard chess puzzle 0091

At this puzzle, next [move](#) is by [Black](#). The objective of the puzzle is to mate in 5 moves.

See the interactive solution at the [puzzle page](#)

Solution 1

Initial board position This is the initial board position of hard chess puzzle 0091.

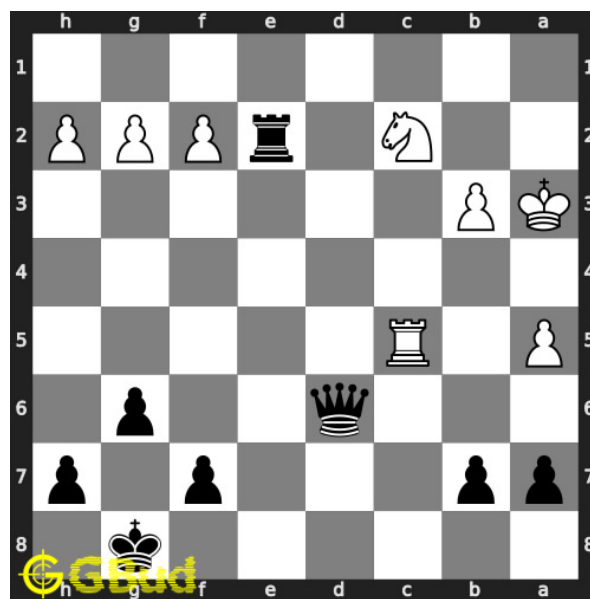


Figure 3: Initial board position of hard chess puzzle 0091

Move 1 Move by black

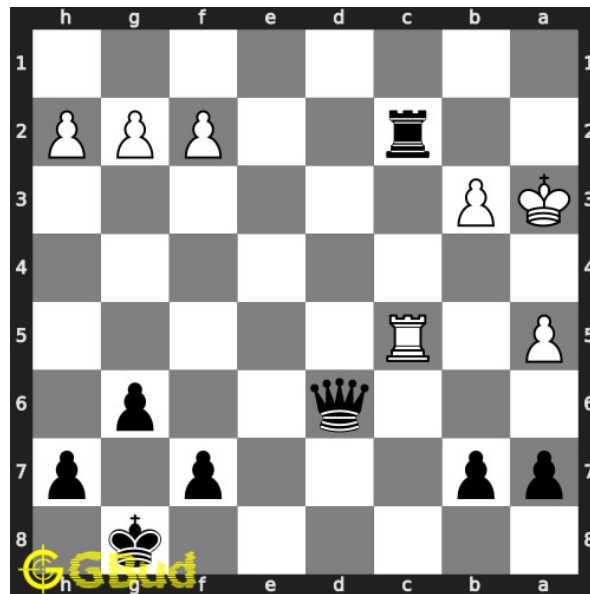


Figure 4: Rxc2

your **rook captures** opponents **knight**. opponent's **rook** can't **capture** your **rook** since it is **pinned** to their **king** by your **queen**

Move 2 Move by white

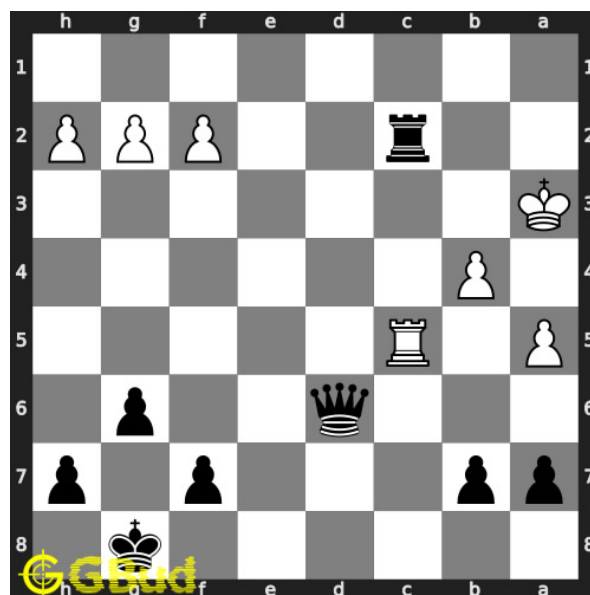


Figure 5: b4

opponent's **pawn moves** to unpin their **rook**

Move 3 Move by black

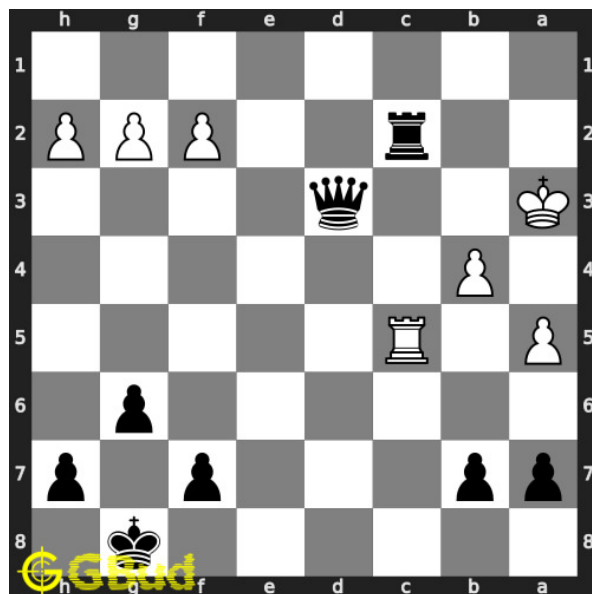


Figure 6: Qd3+

your **queen** moves to d3 and gives **check**

Move 4 Move by white

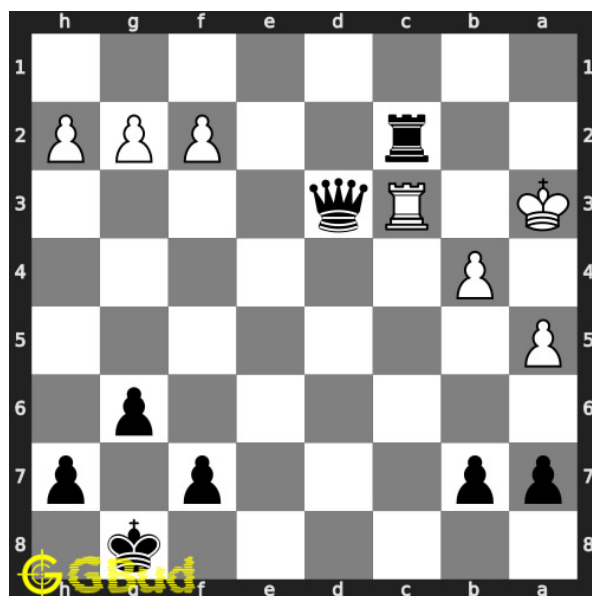


Figure 7: Rc3

opponent's **rook** blocks the **check**

Move 5 Move by black

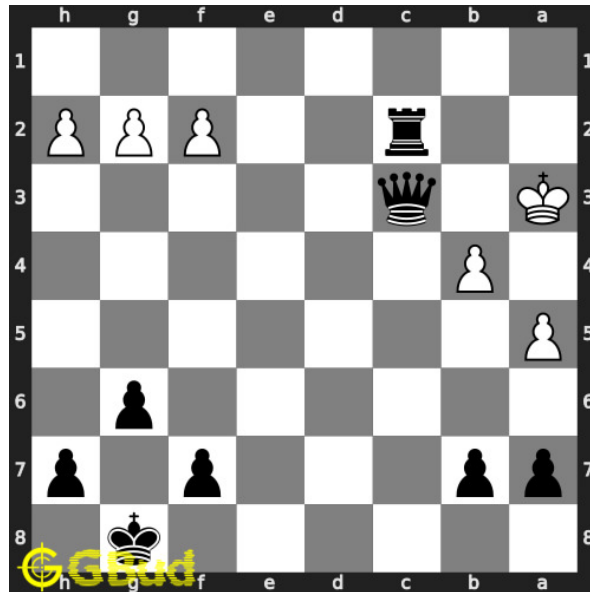


Figure 8: Qxc3+

your **queen captures** opponents hanging **rook** and gives **check**

Move 6 Move by white

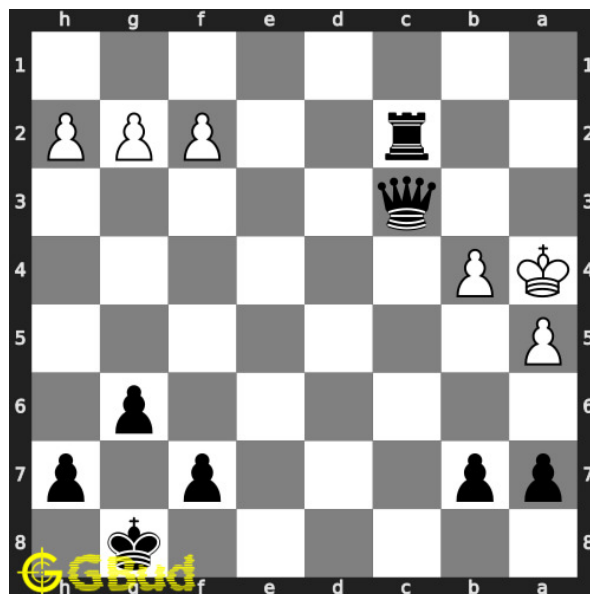


Figure 9: Ka4

opponent's **king moves** to a4 as this is the only legal **move** available.

Move 7 Move by black

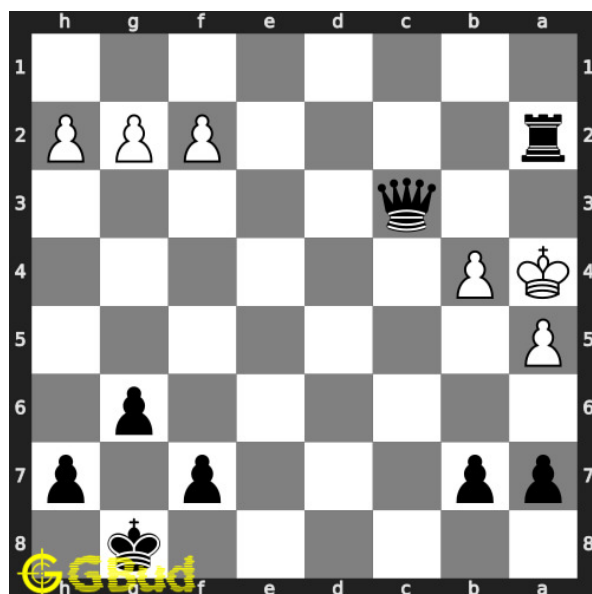


Figure 10: Ra2+

your **rook moves** to a2 and gives **check**

Move 8 Move by white

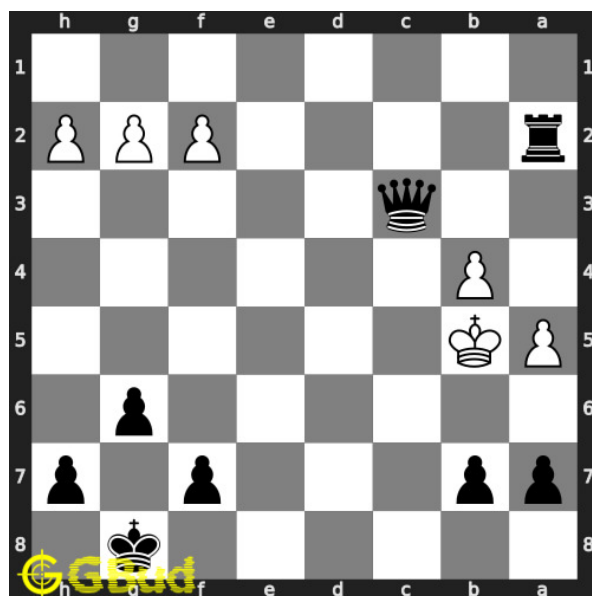


Figure 11: Kb5

opponent's **king moves** to a4 as this is the only legal **move** available.

Move 9 Move by black

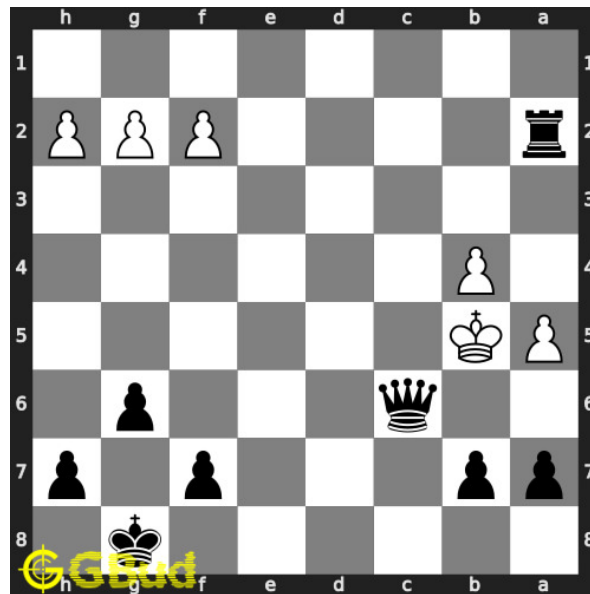


Figure 12: Qc6#

your **queen** moves to c6 and **checkmate**. opponent's **king** can't **capture** your **queen** since it is supported by **pawn**.. this is how you can **mate** in 5 moves.

Right moves for the solution to the hard chess puzzle 0091

Based on the objective of the puzzle, you have to make the right moves. Following are the right moves

1. Rxc2, Qd3+, Qxc3+, Ra2+, Qc6#

Explanation for the moves

1. Rxc2 - Your rook captures opponents knight. Opponent's rook can't capture your rook since it is pinned to their king by your queen
2. b4 - Opponent's pawn moves to unpin their rook
3. Qd3+ - Your queen moves to d3 and gives check
4. Rc3 - Opponent's rook blocks the check
5. Qxc3+ - Your queen captures opponents hanging rook and gives check
6. Ka4 - Opponent's king moves to a4 as this is the only legal move available.
7. Ra2+ - Your rook moves to a2 and gives check
8. Kb5 - Opponent's king moves to a4 as this is the only legal move available.

9. Qc6# - Your queen moves to c6 and checkmate. Opponent's king can't capture your queen since it is supported by pawn.. This is how you can mate in 5 moves.
10. For right move - You had a checkmate in five moves. Those were fine moves
11. For wrong move - You underestimated the power of rook and queen. Do not give up.

Categories of hard chess puzzle 0091

This hard chess puzzle falls in these categories.

1. [Hard chess puzzles](#)
2. [Endgame puzzles in chess](#)
3. [Strategy puzzles in chess](#)
4. [Pin puzzles in chess](#)
5. [Rook puzzles in chess](#)
6. [Queen puzzles in chess](#)

hard chess puzzle 0091 chart



Figure 13: hard chess puzzle 91 chart 1



Figure 14: hard chess puzzle 91 chart 2



Figure 15: hard chess puzzle 91 chart 3

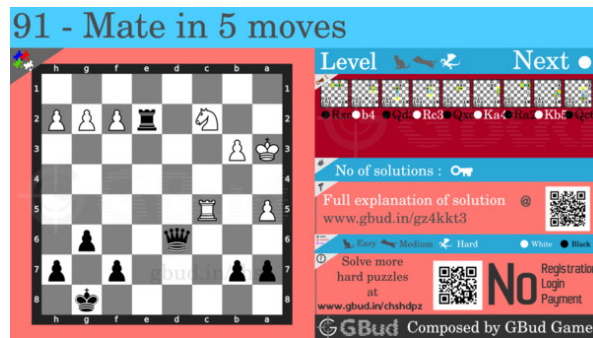


Figure 16: hard chess puzzle 91 chart 4

How to view the solution to hard chess puzzle 0091

To view the [solution to this puzzle](#), follow the steps given below

1. Go to the [puzzle page](#)
2. Click the solution button (Key as shown [below](#)) to view the solution



Figure 17: Click the solution button to view solutions @ <https://gbud.in/gz4kkt3>

How to get help for moves in the hard chess puzzle 0091

To get help or the possible next moves in the puzzle, , follow the steps given below

1. Go to the [puzzle page](#)
2. Click the help button (exclamation mark as shown [below](#)) to get help or suggestion on next possible [move](#)



Figure 18: Click the help button to get help on next move @ <https://gbud.in/gz4kkt3>



Figure 19: Solve more hard puzzles @ <https://gbud.in/chshdpz>



Figure 20: Solve other puzzles @ <https://gbud.in/chsgppz>

Play chess for free

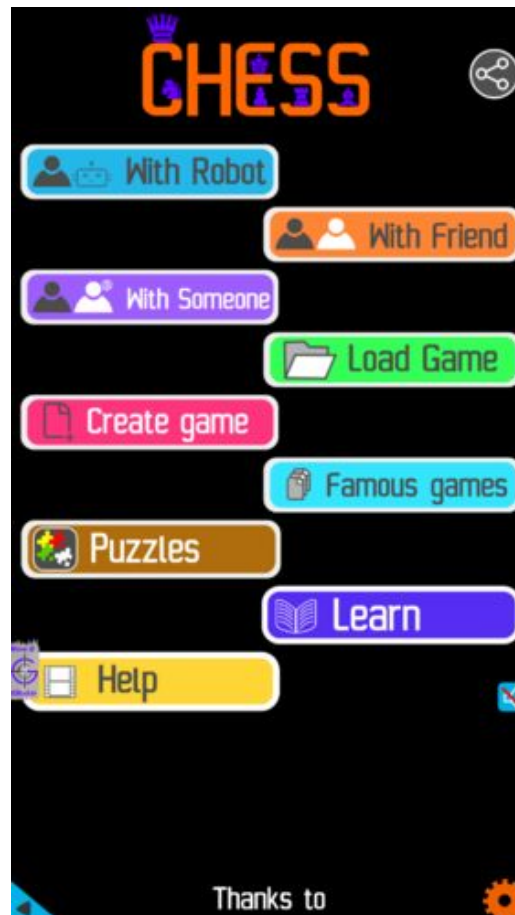


Figure 21: Play chess online for free. Solve puzzles and play with friends

Play chess for free at <https://gbud.in/chs>

We present you a platform to play chess online with friends for free. No need to install any app. You can play chess for free without registration or login.

Simple. You can do several chess related activities.

1. solve chess puzzles
2. learn about chess
3. play chess with computer
4. play chess with friend
5. create your own chess games

6. [fen viewer](#)
7. [fen editor](#)
8. [fen generator](#)
9. [pgn viewer](#)
10. [chess board editor](#)
11. [view famous chess games.](#)



Figure 22: Solve this puzzle online by scanning this QR code or go to the link below

<https://gbud.in/gz4kkt3>

Read the latest article on Hard Chess puzzle # 0091 - Mate in 5 moves by scanning this QR code or click the link

Previous article : [« Hard Chess puzzle # 0090 - Mate in 2 moves](#)

Next article : [Hard Chess puzzle # 0092 - Mate in 4 moves »](#)

[Back to top](#)

[Contact Us](#)