



## Hard Chess Puzzle # 0082

By

G Bud Games  
<https://gbud.in>

December 4, 2021

## Contents

|   |          |
|---|----------|
| <b>Hard Chess puzzle # 0082 - Gain knight</b>                     | <b>4</b> |
| Hard chess puzzle 0082 . . . . .                                  | 4        |
| Solution to hard chess puzzle 0082 . . . . .                      | 5        |
| Solution 1 . . . . .  | 5        |
| Right moves for the solution to the hard chess puzzle 0082        | 8        |
| Explanation for the moves . . . . .                               | 8        |
| Categories of hard chess puzzle 0082 . . . . .                    | 9        |
| hard chess puzzle 0082 chart . . . . .                            | 9        |
| How to view the solution to hard chess puzzle 0082 . . . . .      | 11       |
| How to get help for moves in the hard chess puzzle 0082 . . . . . | 12       |
| Play chess for free . . . . .                                     | 13       |

## List of Figures

|    |   |    |
|----|---|----|
| 1  | Solve this hard chess puzzle 0082. Gain knight @ <a href="https://gbud.in/gmnjzj3">https://gbud.in/gmnjzj3</a> . . . . .    | 4  |
| 2  | Solve this hard chess puzzle online with solution @ <a href="https://gbud.in/gmnjzj3">https://gbud.in/gmnjzj3</a> . . . . . | 4  |
| 3  | Initial board position of hard chess puzzle 0082 . . . . .  | 5  |
| 4  | Rf7 - Your rook pins opponent's knight to their king. Opponent's knight can not move from its position. . . . .             | 6  |
| 5  | Kc8 - Opponent's king escapes from the check threat by moving to c8. . . . .  | 6  |
| 6  | Rxe7 - Your rook captures opponents knight . . . . .  | 7  |
| 7  | Nxe7 - Opponent's knight captures your rook. . . . .  | 7  |
| 8  | Qxe7 - Your queen captures opponents hanging knight. This is how you can gain opponent's knights . . . . .                  | 8  |
| 9  | hard chess puzzle 82 chart 1 . . . . .  | 9  |
| 10 | hard chess puzzle 82 chart 2 . . . . .  | 10 |
| 11 | hard chess puzzle 82 chart 3 . . . . .  | 10 |
| 12 | hard chess puzzle 82 chart 4 . . . . .  | 11 |
| 13 | Click the solution button to view solutions @ <a href="https://gbud.in/gmnjzj3">https://gbud.in/gmnjzj3</a> . . . . .       | 11 |
| 14 | Click the help button to get help on next move @ <a href="https://gbud.in/gmnjzj3">https://gbud.in/gmnjzj3</a> . . . . .    | 12 |
| 15 | Solve more hard puzzles @ <a href="https://gbud.in/chshdpz">https://gbud.in/chshdpz</a> . . . . .                           | 12 |
| 16 | Solve other puzzles @ <a href="https://gbud.in/chsgppz">https://gbud.in/chsgppz</a> . . . . .                               | 12 |
| 17 | Play chess online for free. Solve puzzles and play with friends   | 13 |

18 Solve this puzzle online by scanning this QR code or go to  
the link below . . . . . 14

## Hard Chess puzzle # 0082 - Gain knight

Solve this hard chess puzzle and improve your chess games through improvement of your chess strategies and chess tactics. This hard puzzle is a subset of [kids games](#).

Puzzle No : 0082

Difficulty level : hard

Description : Gain knight

Next Move : White

Player level : Advanced

Short URL for puzzle : <https://gbud.in/gmnjzj3>

### Hard chess puzzle 0082

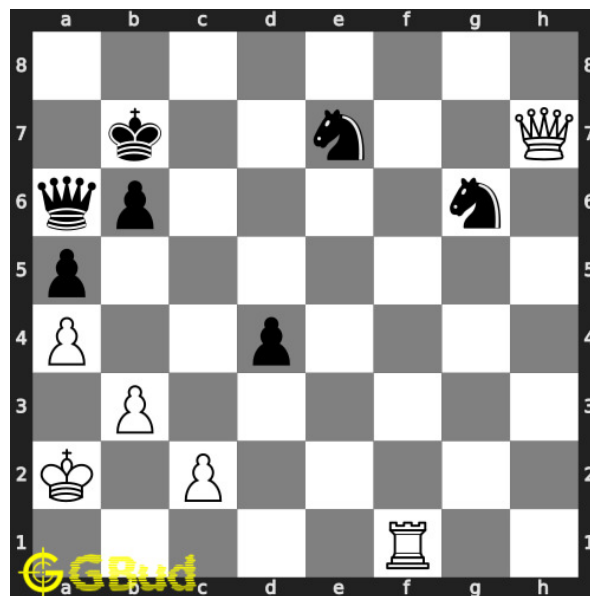


Figure 1: Solve this hard chess puzzle 0082. Gain knight @ <https://gbud.in/gmnjzj3>



Figure 2: Solve this hard chess puzzle online with solution @ <https://gbud.in/gmnjzj3>

## Solution to hard chess puzzle 0082

At this puzzle, next **move** is by **White**. The objective of the puzzle is to gain knight.

See the interactive solution at the [puzzle page](#)

### Solution 1

**Initial board position** This is the initial board position of hard chess puzzle 0082.

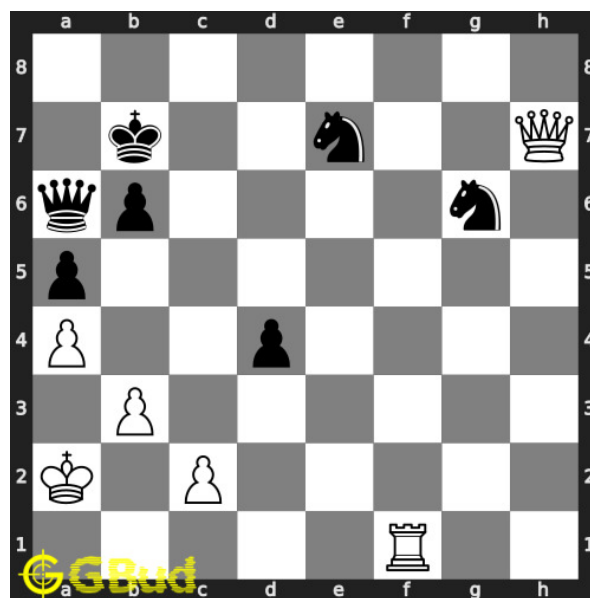


Figure 3: Initial board position of hard chess puzzle 0082

**Move 1** Move by white

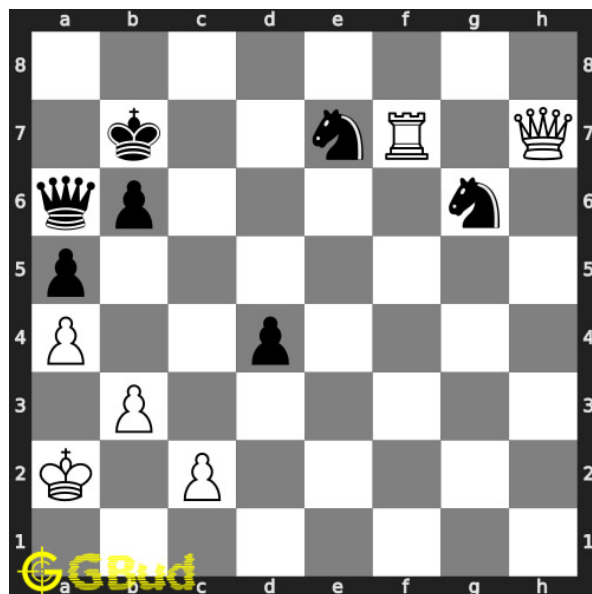


Figure 4: Rf7 - Your rook pins opponent's knight to their king. Opponent's knight can not move from its position.

**Move 2** Move by black

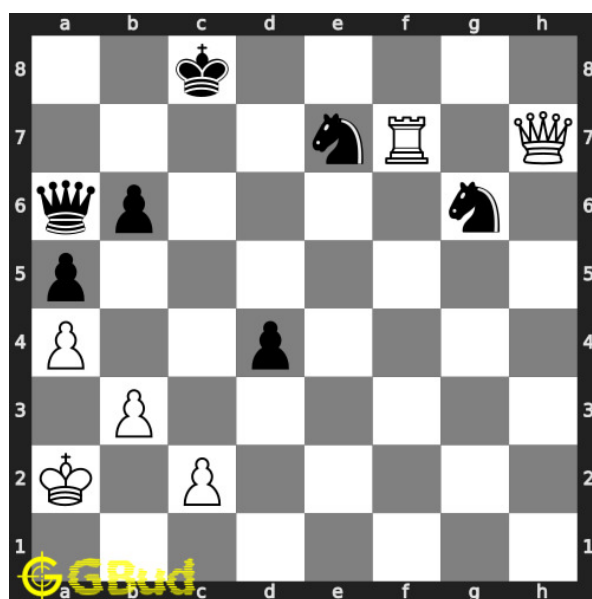


Figure 5: Kc8 - Opponent's king escapes from the check threat by moving to c8.

**Move 3** Move by white

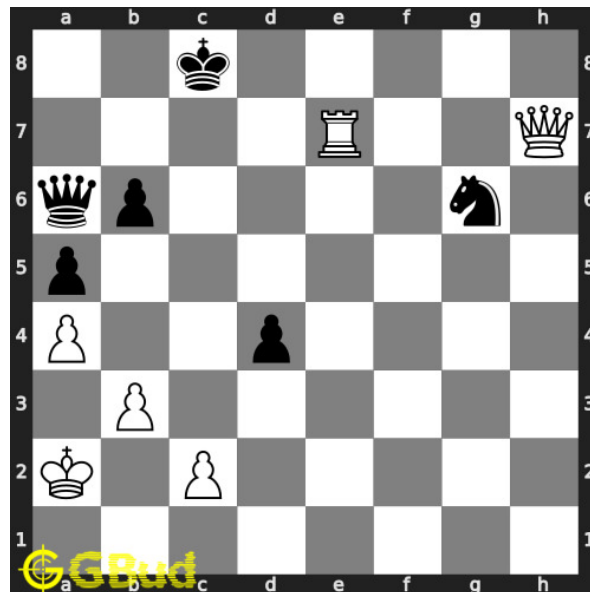


Figure 6: Rxe7 - Your rook captures opponents knight

**Move 4** Move by black

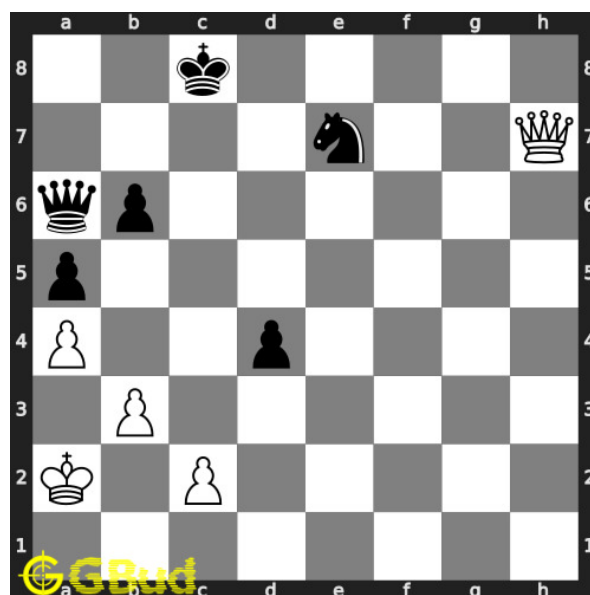


Figure 7: Nxe7 - Opponent's knight captures your rook.

**Move 5** Move by white

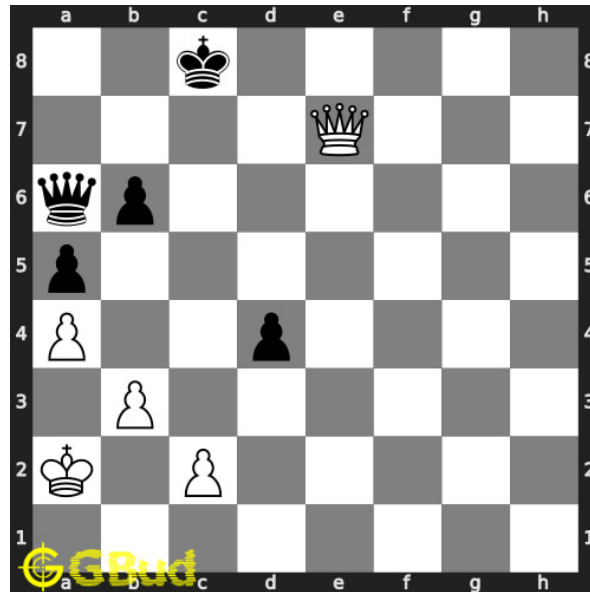


Figure 8: Qxe7 - Your queen captures opponents hanging knight. This is how you can gain opponent's knights

### Right moves for the solution to the hard chess puzzle 0082

Based on the objective of the puzzle, you have to make the right moves. Following are the right moves

1. Rf7, Rxe7, Qxe7

### Explanation for the moves

1. Rf7 - Your rook pins opponent's knight to their king. Opponent's knight can not move from its position.
2. Kc8 - Opponent's king escapes from the check threat by moving to c8.
3. Rxe7 - Your rook captures opponents knight
4. Nxe7 - Opponent's knight captures your rook.
5. Qxe7 - Your queen captures opponents hanging knight. This is how you can gain opponent's knights
6. For right move - You have used your rook effectively to gain the knight. Good job
7. For wrong move - You could have pinned the opponent's knight to the king to gain the knights. Try again



## Categories of hard chess puzzle 0082

This hard chess puzzle falls in these categories.

1. [Hard chess puzzles](#)
2. [Gain puzzles in chess](#)
3. [Strategy puzzles in chess](#)
4. [Pin puzzles in chess](#)
5. [Rook puzzles in chess](#)

### hard chess puzzle 0082 chart



Figure 9: hard chess puzzle 82 chart 1



Figure 10: hard chess puzzle 82 chart 2



Figure 11: hard chess puzzle 82 chart 3



Figure 12: hard chess puzzle 82 chart 4

## How to view the solution to hard chess puzzle 0082

To view the [solution to this puzzle](#), follow the steps given below

1. Go to the [puzzle page](#)
2. Click the solution button (Key as shown [below](#)) to view the solution



Figure 13: Click the solution button to view solutions @ <https://gbud.in/gmnjz3>

## How to get help for moves in the hard chess puzzle 0082

To get help or the possible next moves in the puzzle, , follow the steps given below

1. Go to the [puzzle page](#)
2. Click the help button (exclamation mark as shown [below](#)) to get help or suggestion on next possible [move](#)



Figure 14: Click the help button to get help on next move @ <https://gbud.in/gmnjzj3>



Figure 15: Solve more hard puzzles @ <https://gbud.in/chshdpz>



Figure 16: Solve other puzzles @ <https://gbud.in/chsgppz>

## Play chess for free



Figure 17: Play chess online for free. Solve puzzles and play with friends

Play chess for free at <https://gbud.in/chs>

We present you a platform to play chess online with friends for free. No need to install any app. You can play chess for free without registration or login.

Simple. You can do several chess related activities.

1. solve chess puzzles
2. learn about chess
3. play chess with computer
4. play chess with friend
5. create your own chess games

6. [fen viewer](#)
7. [fen editor](#)
8. [fen generator](#)
9. [pgn viewer](#)
10. [chess board editor](#)
11. [view famous chess games.](#)



Figure 18: Solve this puzzle online by scanning this QR code or go to the link below

<https://gbud.in/gmnjzj3>

Read the latest article on Hard Chess puzzle # 0082 - Gain knight by scanning this QR code or click the link

Previous article : « [Hard Chess puzzle # 0081 - Mate in 4 moves](#)

Next article : [Hard Chess puzzle # 0083 - Gain queen »](#)

[Back to top](#)

[Contact Us](#)