



Hard Chess Puzzle # 0081

By

G Bud Games
<https://gbud.in>

November 24, 2021

Contents

Hard Chess puzzle # 0081 - Mate in 4 moves	4
Hard chess puzzle 0081	4
Solution to hard chess puzzle 0081	5
Solution 1	5
Solution 2	9
Right moves for the solution to the hard chess puzzle 0081	14
Explanation for the moves	14
Categories of hard chess puzzle 0081	15
hard chess puzzle 0081 chart	16
How to view the solution to hard chess puzzle 0081	16
How to get help for moves in the hard chess puzzle 0081	17
Play chess for free	19

List of Figures

1	Solve this hard chess puzzle 0081. Mate in 4 moves @ https://gbud.in/gslqnl3	4
2	Solve this hard chess puzzle online with solution @ https://gbud.in/gslqnl3	4
3	Initial board position of hard chess puzzle 0081	5
4	Bxc3 - Opponent's bishop captures your rook thinking that this is a gain for them since if your bishop captures their bishop, their queen will capture it	6
5	Qd2 - Queen moves in such a way it has an x-ray attack on opponent's queen through their bishop. Their bishop can not capture your queen since the opponent pinned their bishop to their king.if their bishop captures your bishop, your queen can capture their queen.	6
6	Qxc5 - Opponent is forced to move their queen. Their queen captures your pawn and escapes from the x-ray attack	7
7	Bxc3+ - Your bishop captures the opponent's hanging bishop and gives check	7
8	Qe5 - Opponent's queen blocks the check	8
9	Bxe5+ - Your bishop captures the opponent's hanging queen and gives next check	8
10	Rf6 - Opponent's rook blocks the check	9

11	Bxf6# - Your bishop captures the opponent's hanging rook and checkmate. Opponent's king can not move since it is blocked by friendly pawn and g8 is attacked by your bishop. This is how you can mate in 4 moves	9
12	Initial board position of hard chess puzzle 0081	10
13	Bxc3 - Opponent's bishop captures your rook thinking that this is a gain for them since if your bishop captures their bishop, their queen will capture it	10
14	Qd2 - Queen moves in such a way it has an x-ray attack on opponent's queen through their bishop. Their bishop can not capture your queen since the opponent pinned their bishop to their king.if their bishop captures your bishop, your queen can capture their queen.	11
15	Qxc5 - Opponent is forced to move their queen. Their queen captures your pawn and escapes from the x-ray attack	11
16	Qxc3+ - Your queen captures the opponent's hanging bishop and gives check	12
17	Qe5 - Opponent's queen blocks the check	12
18	Qxe5+ - Your queen captures the opponent's hanging queen and gives next check	13
19	Rf6 - Opponent's rook blocks the check	13
20	Qxf6# - Your queen captures the opponent's hanging rook and checkmate. Opponent's king can not move since it is blocked by friendly pawn and g8 is attacked by your bishop. This is how you can mate in 4 moves	14
21	hard chess puzzle 81 chart 1	16
22	hard chess puzzle 81 chart 2	16
23	Click the solution button to view solutions @ https://gbud.in/gslqnl3	17
24	Click the help button to get help on next move @ https://gbud.in/gslqnl3	18
25	Solve more hard puzzles @ https://gbud.in/chshdpz	18
26	Solve other puzzles @ https://gbud.in/chsgppz	18
27	Play chess online for free. Solve puzzles and play with friends	19
28	Solve this puzzle online by scanning this QR code or go to the link below	20

Hard Chess puzzle # 0081 - Mate in 4 moves

Solve this hard chess puzzle and improve your chess games through improvement of your chess strategies and chess tactics. This hard puzzle is a subset of [kids games](#).

Puzzle No : 0081

Difficulty level : hard

Description : Mate in 4 moves

Next Move : White

Player level : Advanced

Short URL for puzzle : <https://gbud.in/gslqnl3>

Hard chess puzzle 0081

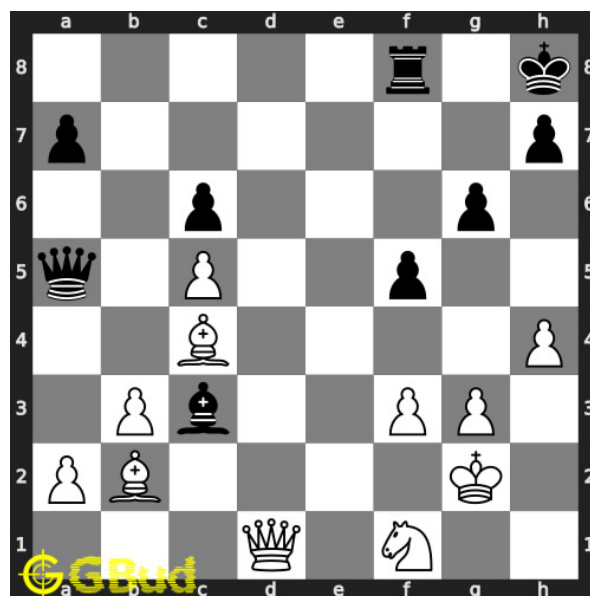


Figure 1: Solve this hard chess puzzle 0081. Mate in 4 moves @ <https://gbud.in/gslqnl3>



Figure 2: Solve this hard chess puzzle online with solution @ <https://gbud.in/gslqnl3>

Solution to hard chess puzzle 0081

At this puzzle, next **move** is by **White**. The objective of the puzzle is to mate in 4 moves.

See the interactive solution at the [puzzle page](#)

Solution 1

Initial board position This is the initial board position of hard chess puzzle 0081.

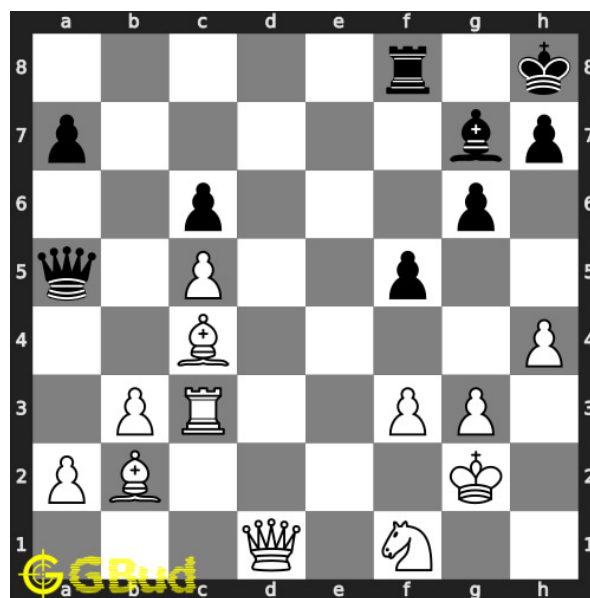


Figure 3: Initial board position of hard chess puzzle 0081

Move 1 Move by black

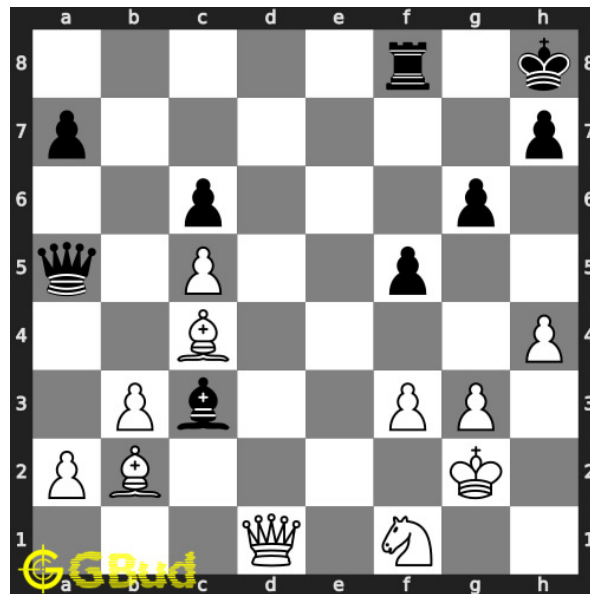


Figure 4: Bxc3 - Opponent's bishop captures your rook thinking that this is a gain for them since if your bishop captures their bishop, their queen will capture it

Move 2 Move by white

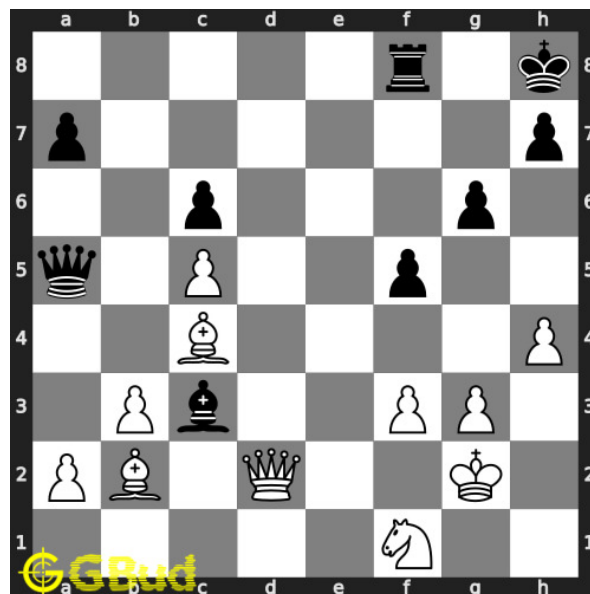


Figure 5: Qd2 - Queen moves in such a way it has an x-ray attack on opponent's queen through their bishop. Their bishop can not capture your queen since the opponent pinned their bishop to their king. If their bishop captures your bishop, your queen can capture their queen.

Move 3 Move by black

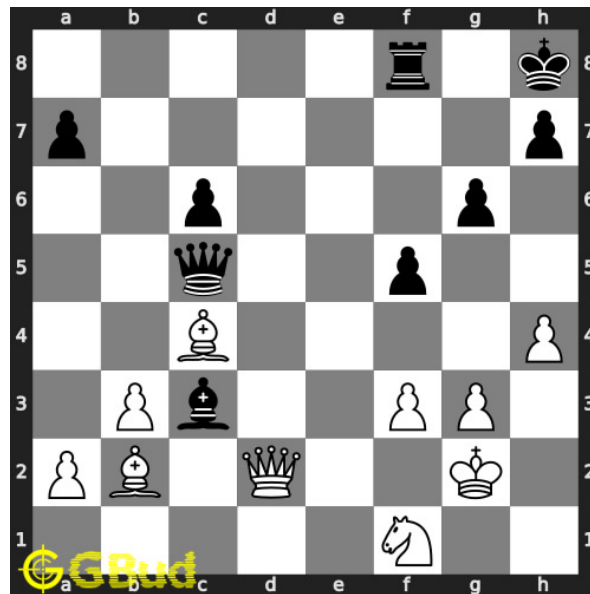


Figure 6: Qxc5 - Opponent is forced to move their queen. Their queen captures your pawn and escapes from the x-ray attack

Move 4 Move by white

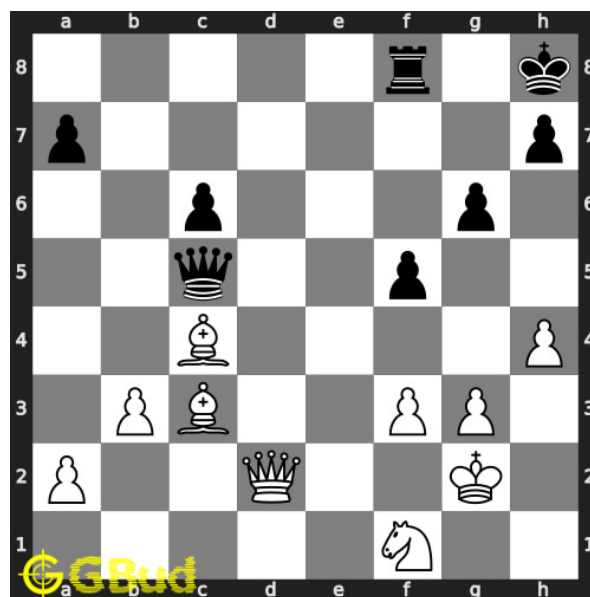


Figure 7: Bxc3+ - Your bishop captures the opponent's hanging bishop and gives check

Move 5 Move by black

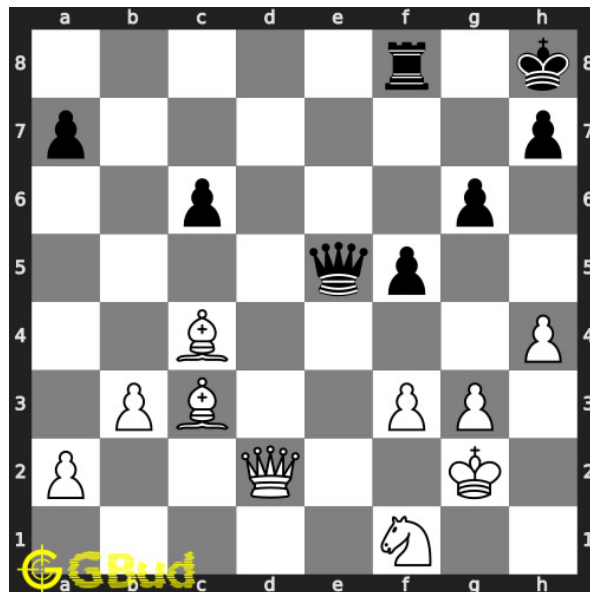


Figure 8: Qe5 - Opponent's queen blocks the check

Move 6 Move by white

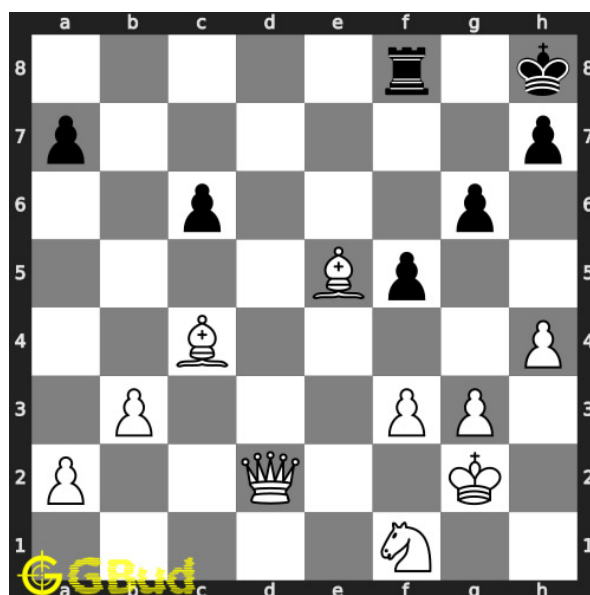


Figure 9: Bxe5+ - Your bishop captures the opponent's hanging queen and gives next check

Move 7 Move by black

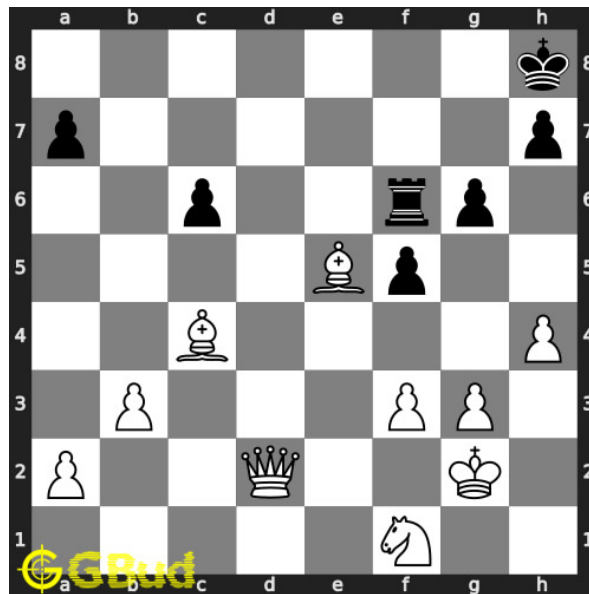


Figure 10: Rf6 - Opponent's rook blocks the check

Move 8 Move by white

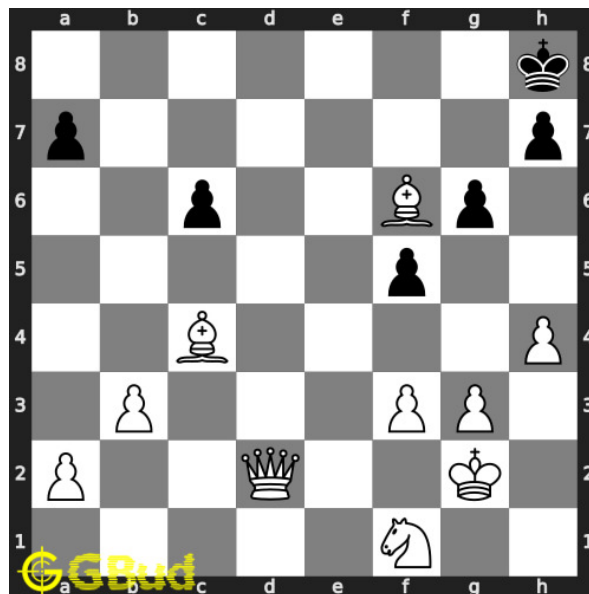


Figure 11: Bxf6# - Your bishop captures the opponent's hanging rook and checkmate. Opponent's king can not move since it is blocked by friendly pawn and g8 is attacked by your bishop. This is how you can mate in 4 moves

Solution 2

Initial board position This is the initial board position of hard chess puzzle 0081.

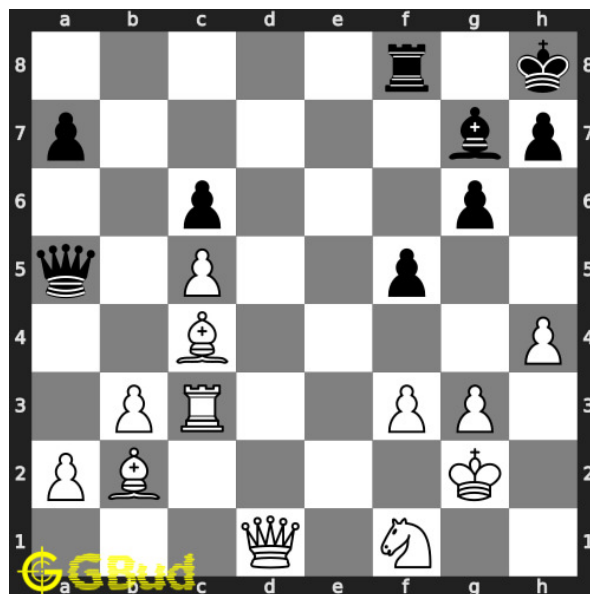


Figure 12: Initial board position of hard chess puzzle 0081

Move 1 Move by black

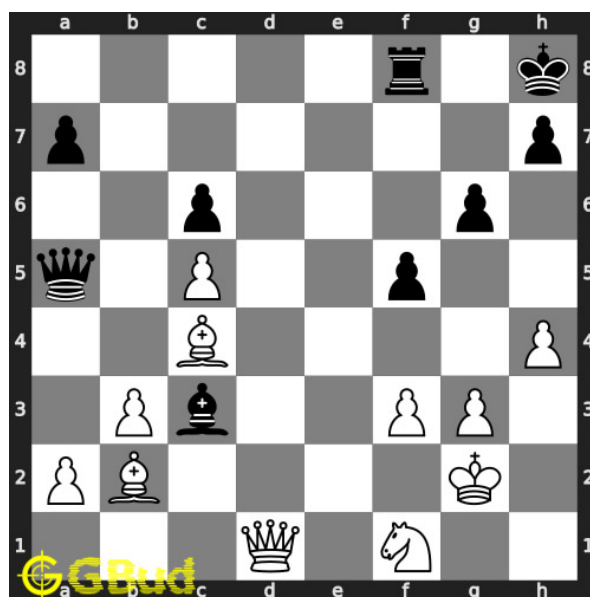


Figure 13: Bxc3 - Opponent's bishop captures your rook thinking that this is a gain for them since if your bishop captures their bishop, their queen will capture it

Move 2 Move by white

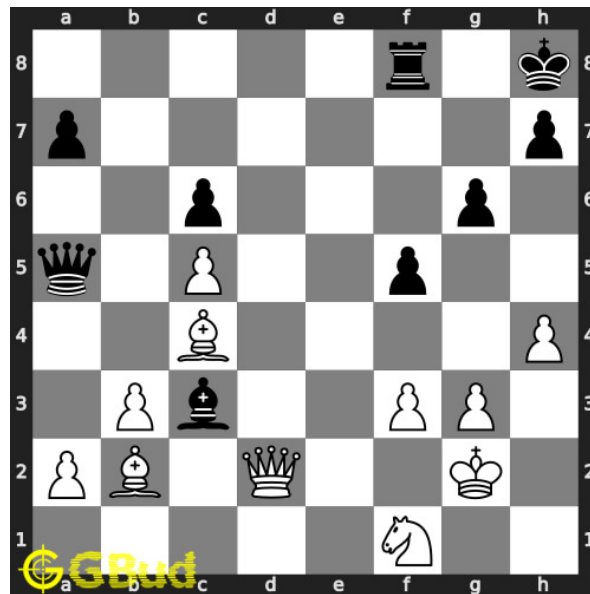


Figure 14: Qd2 - Queen moves in such a way it has an x-ray attack on opponent's queen through their bishop. Their bishop can not capture your queen since the opponent pinned their bishop to their king, if their bishop captures your bishop, your queen can capture their queen.

Move 3 Move by black

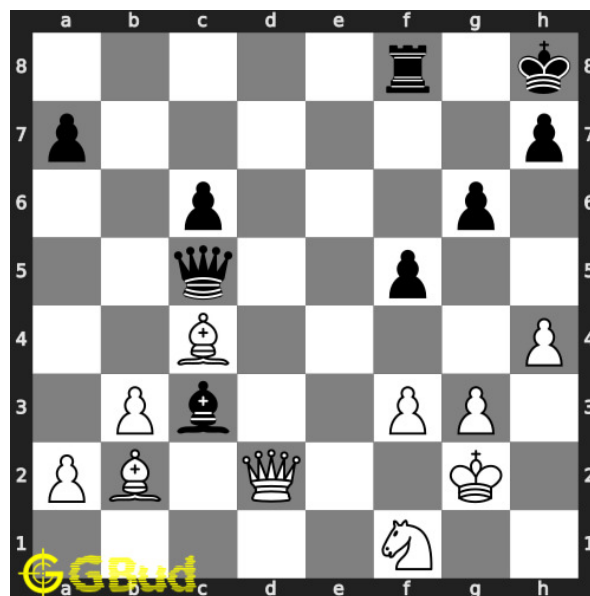


Figure 15: Qxc5 - Opponent is forced to move their queen. Their queen captures your pawn and escapes from the x-ray attack

Move 4 Move by white

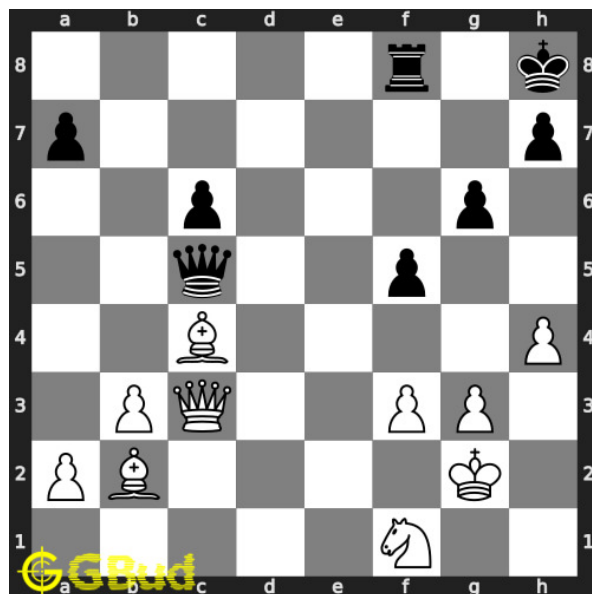


Figure 16: Qxc3+ - Your queen captures the opponent's hanging bishop and gives check

Move 5 Move by black

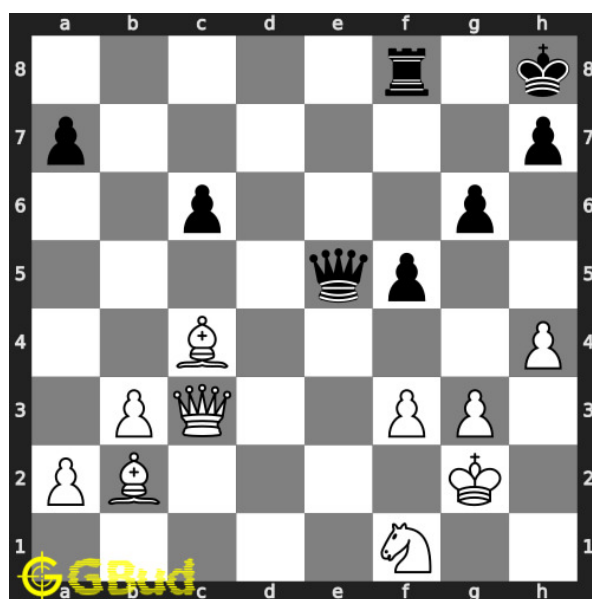


Figure 17: Qe5 - Opponent's queen blocks the check

Move 6 Move by white

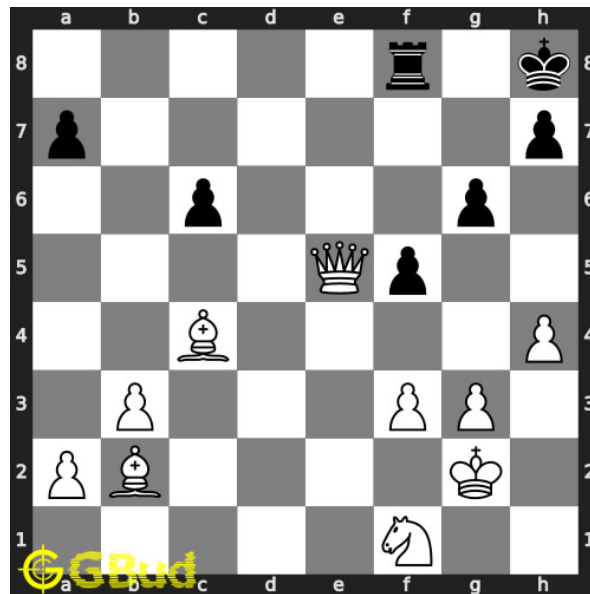


Figure 18: Qxe5+ - Your queen captures the opponent's hanging queen and gives next check

Move 7 Move by black

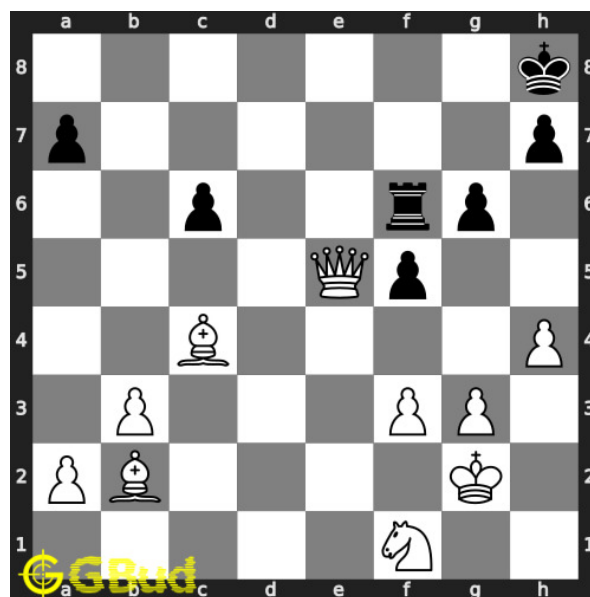


Figure 19: Rf6 - Opponent's rook blocks the check

Move 8 Move by white

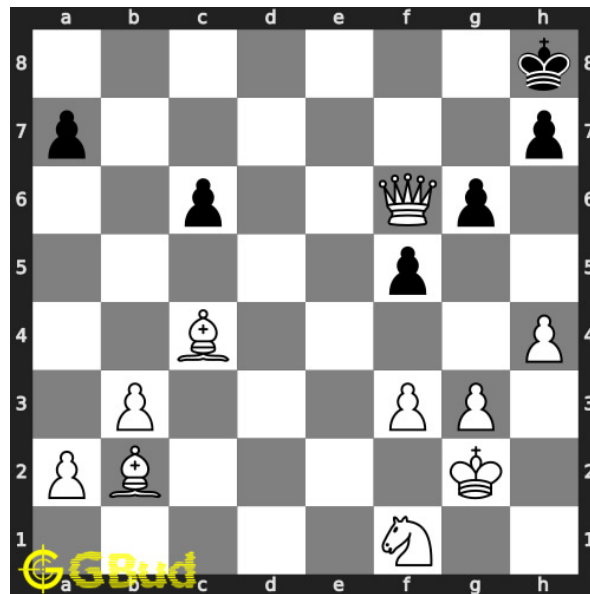


Figure 20: Qxf6# - Your queen captures the opponent's hanging rook and checkmate. Opponent's king can not move since it is blocked by friendly pawn and g8 is attacked by your bishop. This is how you can mate in 4 moves

Right moves for the solution to the hard chess puzzle 0081

Based on the objective of the puzzle, you have to make the right moves. Following are the right moves

1. Qd2, Bxc3+, Bxe5+, Bxf6#
2. Qd2, Qxc3+, Qxe5+, Qxf6#

Explanation for the moves

1. Bxc3 - Opponent's bishop captures your rook thinking that this is a gain for them since if your bishop captures their bishop, their queen will capture it
2. Qd2 - Queen moves in such a way it has an x-ray attack on opponent's queen through their bishop. Their bishop can not capture your queen since the opponent pinned their bishop to their king. If their bishop captures your bishop, your queen can capture their queen.
3. Qxc5 - Opponent is forced to move their queen. Their queen captures your pawn and escapes from the x-ray attack
4. Bxc3+ - Your bishop captures the opponent's hanging bishop and gives check

5. Qxc3+ - Your queen captures the opponent's hanging bishop and gives check
6. Qe5 - Opponent's queen blocks the check
7. Bxe5+ - Your bishop captures the opponent's hanging queen and gives next check
8. Qxe5+ - Your queen captures the opponent's hanging queen and gives next check
9. Rf6 - Opponent's rook blocks the check
10. Bxf6# - Your bishop captures the opponent's hanging rook and checkmate. Opponent's king can not move since it is blocked by friendly pawn and g8 is attacked by your bishop. This is how you can mate in 4 moves
11. Qxf6# - Your queen captures the opponent's hanging rook and checkmate. Opponent's king can not move since it is blocked by friendly pawn and g8 is attacked by your bishop. This is how you can mate in 4 moves
12. For right move - You made sure that your bishop is unstoppable. Quite fantastic moves
13. For wrong move - You could have given series of checks using your bishop or queen to have a mate in 4 moves. Do not stop trying

Categories of hard chess puzzle 0081

This hard chess puzzle falls in these categories.

1. [Hard chess puzzles](#)
2. [Endgame puzzles in chess](#)
3. [Strategy puzzles in chess](#)
4. [Mate in 4 puzzles in chess](#)
5. [Pin puzzles in chess](#)
6. [Queen puzzles in chess](#)
7. [Bishop puzzles in chess](#)

hard chess puzzle 0081 chart



Figure 21: hard chess puzzle 81 chart 1

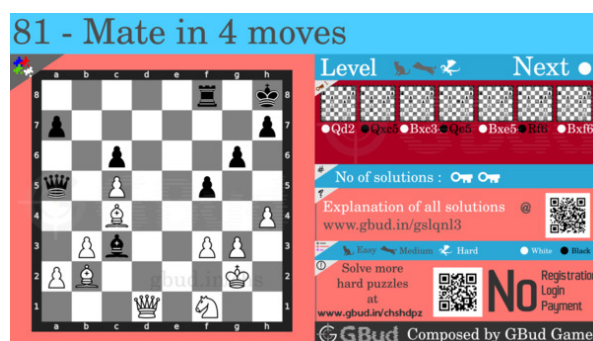


Figure 22: hard chess puzzle 81 chart 2

How to view the solution to hard chess puzzle 0081

To view the [solution to this puzzle](#), follow the steps given below

1. Go to the [puzzle page](#)

2. Click the solution button (Key as shown [below](#)) to view the solution



Figure 23: Click the solution button to view solutions @ <https://gbud.in/gslqnl3>

How to get help for moves in the hard chess puzzle 0081

To get help or the possible next moves in the puzzle, , follow the steps given below

1. Go to the [puzzle page](#)
2. Click the help button (exclamation mark as shown [below](#)) to get help or suggestion on next possible [move](#)



Figure 24: Click the help button to get help on next move @ <https://gbud.in/gslqnl3>



Figure 25: Solve more hard puzzles @ <https://gbud.in/chshdpz>



Figure 26: Solve other puzzles @ <https://gbud.in/chsgppz>

Play chess for free

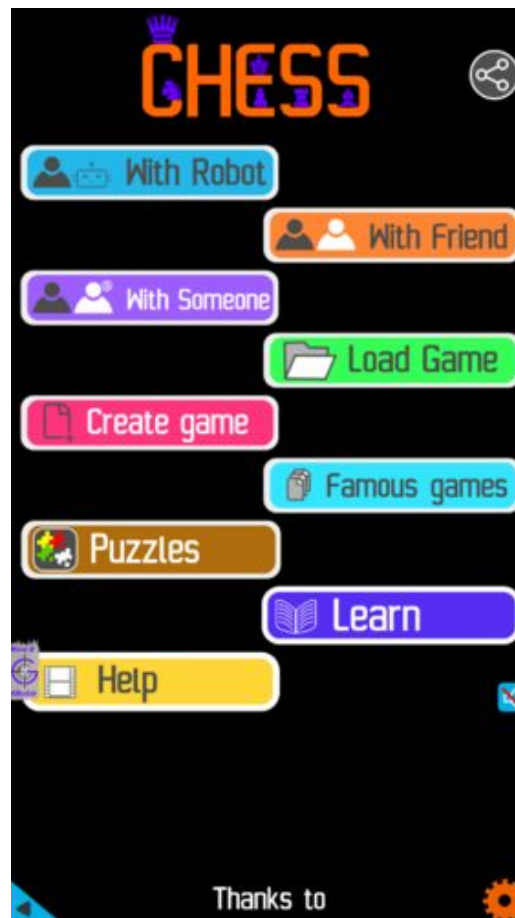


Figure 27: Play chess online for free. Solve puzzles and play with friends

Play chess for free at <https://gbud.in/chs>

We present you a platform to play chess online with friends for free. No need to install any app. You can play chess for free without registration or login.

Simple. You can do several chess related activities.

1. [solve chess puzzles](#)
2. [learn about chess](#)
3. [play chess with computer](#)
4. [play chess with friend](#)
5. [create your own chess games](#)
6. [fen viewer](#)
7. [fen editor](#)
8. [fen generator](#)
9. [pgn viewer](#)
10. [chess board editor](#)

11. [view famous chess games.](#)



Figure 28: Solve this puzzle online by scanning this QR code or go to the link below

<https://gbud.in/gslqnl3>

Read the latest article on Hard Chess puzzle # 0081 - Mate in 4 moves by scanning this QR code or click the link

Previous article : « [Hard Chess puzzle # 0080 - Mate in 3 moves](#)

Next article : [Hard chess puzzles](#) »

[Back to top](#)

[Contact Us](#)

© GBud Games 2021