



Hard Chess Puzzle # 0080

By

G Bud Games
<https://gbud.in>

November 23, 2021

Contents

Hard Chess puzzle # 0080 - Mate in 3 moves	4
Hard chess puzzle 0080	4
Solution to hard chess puzzle 0080	5
Solution 1	5
Right moves for the solution to the hard chess puzzle 0080	8
Explanation for the moves	8
Categories of hard chess puzzle 0080	9
hard chess puzzle 0080 chart	9
How to view the solution to hard chess puzzle 0080	10
How to get help for moves in the hard chess puzzle 0080	11
Play chess for free	12

List of Figures

1	Solve this hard chess puzzle 0080. Mate in 3 moves @ https://gbud.in/gvgnj63	4
2	Solve this hard chess puzzle online with solution @ https://gbud.in/gvgnj63	4
3	Initial board position of hard chess puzzle 0080	5
4	Nf6+ - Your knight moves to f6 and gives check to opponent's king	6
5	Kf8 - Opponent's king moves closer to their rook. They can not come to g7 due to the attack of your pawn.	6
6	Bb7+ - This is a two purpose move. Movement of bishop leads to check from the rook and it block the opponent's queen attack to your rook. If you moved your bishop to another square, opponent's queen would have captured your rook.	7
7	Re8 - Opponent's rook moves and blocks your check	7
8	Rxe8# - Your rook captures the opponent's rook and check-mate. Opponent's king has no free squares to move. It can not capture your rook since it is supported by your knight. This is how you can mate in 3 moves.	8
9	hard chess puzzle 80 chart 1	9
10	hard chess puzzle 80 chart 2	10
11	Click the solution button to view solutions @ https://gbud.in/gvgnj63	10

12	Click the help button to get help on next move @ https://gbud.in/gvgnj63	11
13	Solve more hard puzzles @ https://gbud.in/chshdpz	11
14	Solve other puzzles @ https://gbud.in/chsgppz	11
15	Play chess online for free. Solve puzzles and play with friends	12
16	Solve this puzzle online by scanning this QR code or go to the link below	13

Hard Chess puzzle # 0080 - Mate in 3 moves

Solve this hard chess puzzle and improve your chess games through improvement of your chess strategies and chess tactics. This hard puzzle is a subset of [kids games](#).

Puzzle No : 0080

Difficulty level : hard

Description : Mate in 3 moves

Next Move : White

Player level : Advanced

Short URL for puzzle : <https://gbud.in/gvgnj63>

Hard chess puzzle 0080

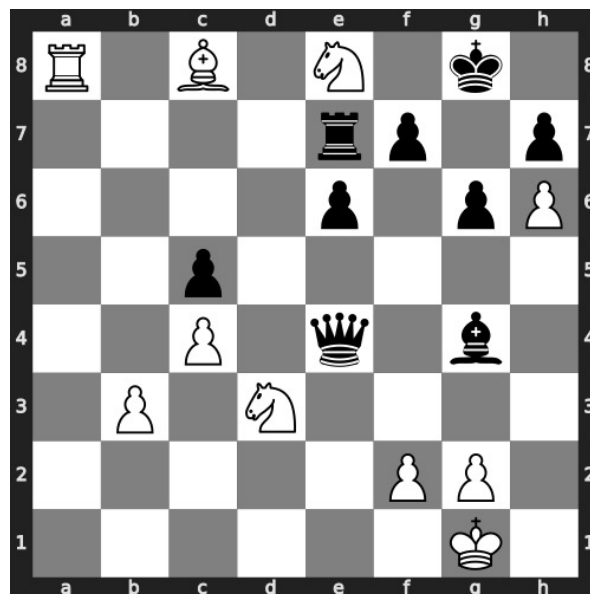


Figure 1: Solve this hard chess puzzle 0080. Mate in 3 moves @ <https://gbud.in/gvgnj63>



Figure 2: Solve this hard chess puzzle online with solution @ <https://gbud.in/gvgnj63>

Solution to hard chess puzzle 0080

At this puzzle, next **move** is by **White**. The objective of the puzzle is to mate in 3 moves.

See the interactive solution at the [puzzle page](#)

Solution 1

Initial board position This is the initial board position of hard chess puzzle 0080.

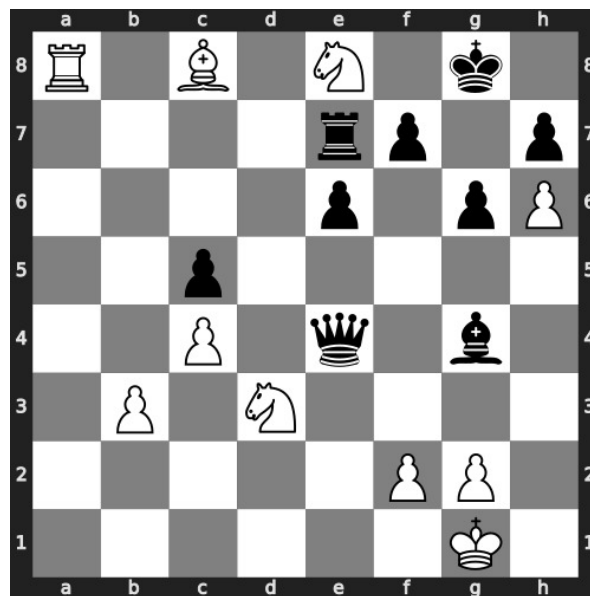


Figure 3: Initial board position of hard chess puzzle 0080

Move 1 Move by white

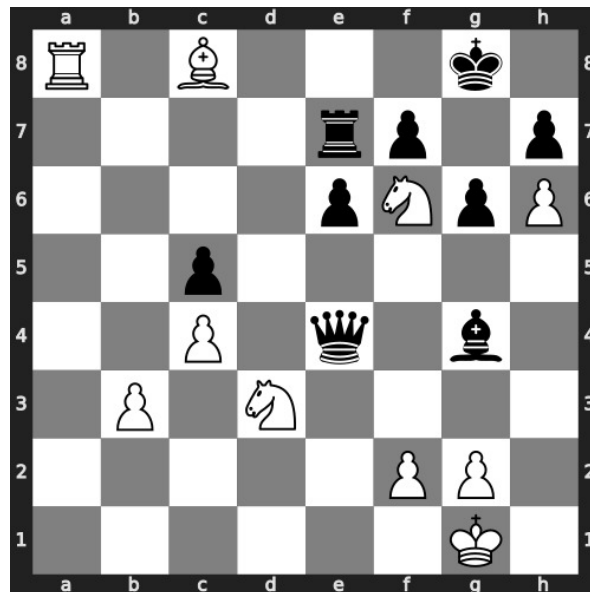


Figure 4: Nf6+ - Your knight moves to f6 and gives check to opponent's king

Move 2 Move by black

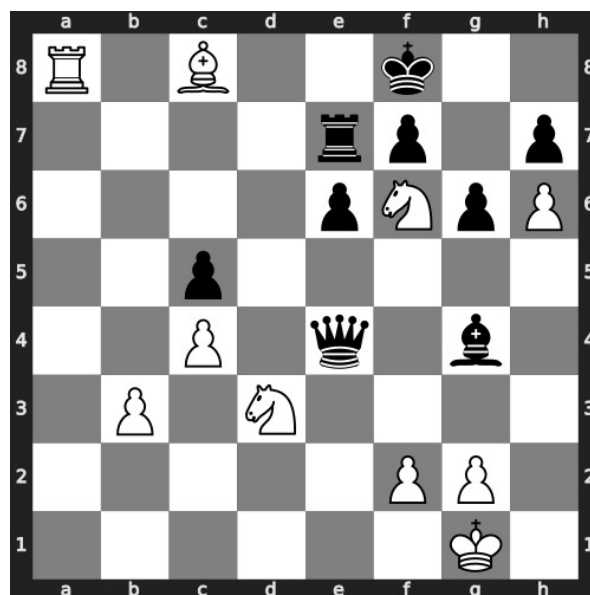


Figure 5: Kf8 - Opponent's king moves closer to their rook. They can not come to g7 due to the attack of your pawn.

Move 3 Move by white

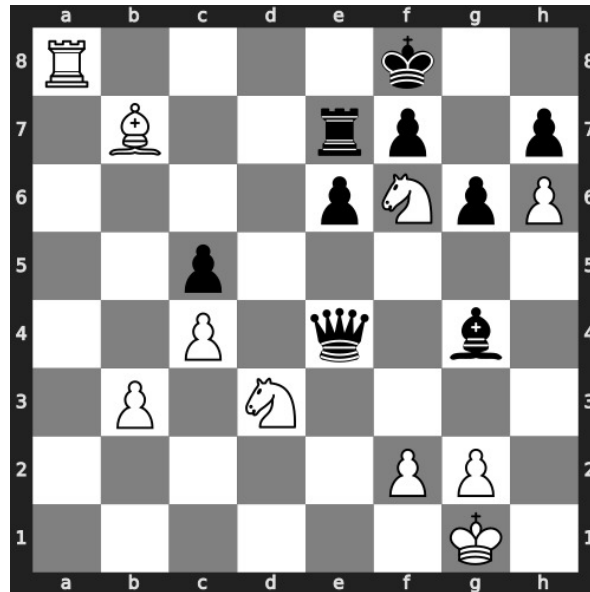


Figure 6: Bb7+ - This is a two purpose move. Movement of bishop leads to check from the rook and it block the opponent's queen attack to your rook. If you moved your bishop to another square, opponent's queen would have captured your rook.

Move 4 Move by black

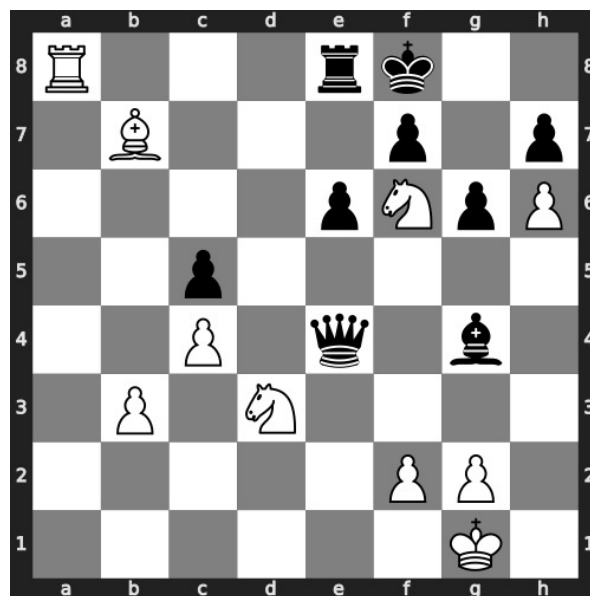


Figure 7: Re8 - Opponent's rook moves and blocks your check

Move 5 Move by white

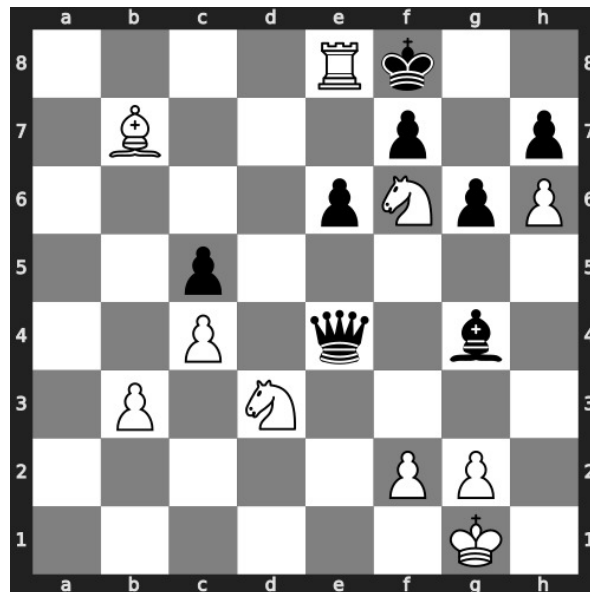


Figure 8: Rxe8# - Your rook captures the opponent's rook and checkmate. Opponent's king has no free squares to move. It can not capture your rook since it is supported by your knight. This is how you can mate in 3 moves.

Right moves for the solution to the hard chess puzzle 0080

Based on the objective of the puzzle, you have to make the right moves. Following are the right moves

1. Nf6+, Bb7+, Rxe8#

Explanation for the moves

1. Nf6+ - Your knight moves to f6 and gives check to opponent's king
2. Bb7+ - This is a two purpose move. Movement of bishop leads to check from the rook and it block the opponent's queen attack to your rook. If you moved your bishop to another square, opponent's queen would have captured your rook.
3. Rxe8# - Your rook captures the opponent's rook and checkmate. Opponent's king has no free squares to move. It can not capture your rook since it is supported by your knight. This is how you can mate in 3 moves.
4. Kf8 - Opponent's king moves closer to their rook. They can not come to g7 due to the attack of your pawn.
5. Re8 - Opponent's rook moves and blocks your check
6. For right move - You have used the discovered attack effectively to checkmate in 3 moves. Keep solving the puzzles

7. For wrong move - You could have moved knight, bishop and rook and had a checkmate. Try again

Categories of hard chess puzzle 0080

This hard chess puzzle falls in these categories.

1. [Hard chess puzzles](#)
2. [Mate in 3 puzzles in chess](#)
3. [Endgame puzzles in chess](#)
4. [Strategy puzzles in chess](#)
5. [Rook puzzles in chess](#)
6. [Knight puzzles in chess](#)
7. [Bishop puzzles in chess](#)

hard chess puzzle 0080 chart

80 - Mate in 3 moves

Level 80 Next

● Nf6+ ● Kf8 ● Bb7+ ● Re8 ● Rxe8#

No of solutions : 1

Full explanation of solution @ www.gbud.in/gvgnj63

Easy Medium Hard ● White ● Black

Solve more hard puzzles at www.gbud.in/chshdpz

No Registration Login Payment

GBud Composed by GBud Games

Figure 9: hard chess puzzle 80 chart 1

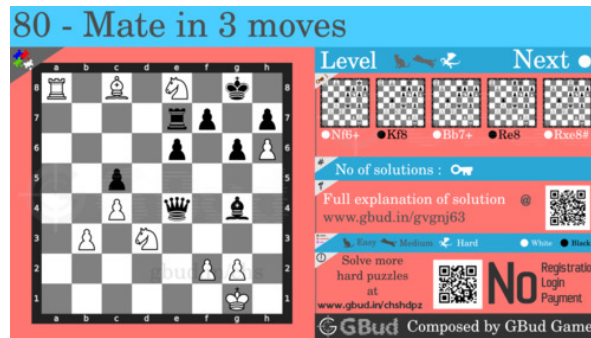


Figure 10: hard chess puzzle 80 chart 2

How to view the solution to hard chess puzzle 0080

To view the [solution to this puzzle](#), follow the steps given below

1. Go to the [puzzle page](#)
2. Click the solution button (Key as shown [below](#)) to view the solution



Figure 11: Click the solution button to view solutions @ <https://gbud.in/gvgnj63>

How to get help for moves in the hard chess puzzle 0080

To get help or the possible next moves in the puzzle, , follow the steps given below

1. Go to the [puzzle page](#)
2. Click the help button (exclamation mark as shown [below](#)) to get help or suggestion on next possible [move](#)



Figure 12: Click the help button to get help on next move @ <https://gbud.in/gvgnj63>



Figure 13: Solve more hard puzzles @ <https://gbud.in/chshdpz>



Figure 14: Solve other puzzles @ <https://gbud.in/chsgppz>

Play chess for free

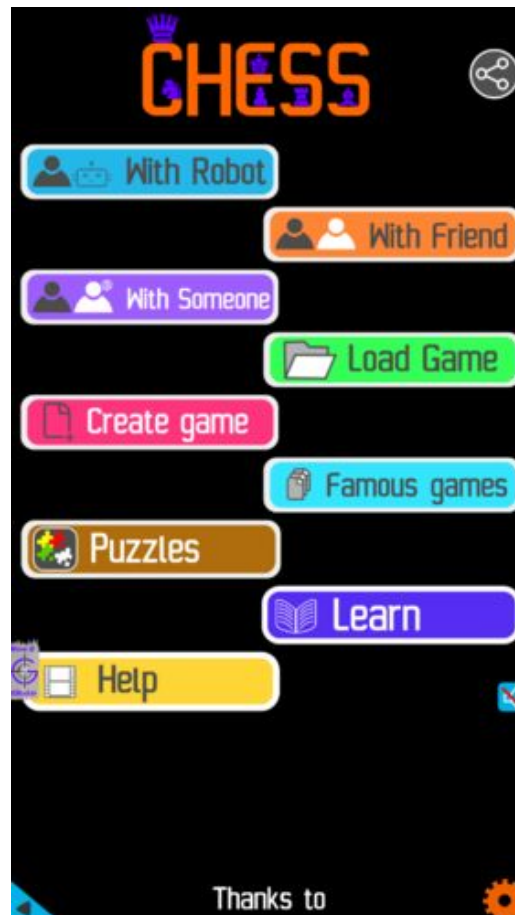


Figure 15: Play chess online for free. Solve puzzles and play with friends

Play chess for free at <https://gbud.in/chs>

We present you a platform to play chess online with friends for free. No need to install any app. You can play chess for free without registration or login.

Simple. You can do several chess related activities.

1. solve chess puzzles
2. learn about chess
3. play chess with computer
4. play chess with friend
5. create your own chess games

6. [fen viewer](#)
7. [fen editor](#)
8. [fen generator](#)
9. [pgn viewer](#)
10. [chess board editor](#)
11. [view famous chess games.](#)



Figure 16: Solve this puzzle online by scanning this QR code or go to the link below

<https://gbud.in/gvgnj63>

Read the latest article on Hard Chess puzzle # 0080 - Mate in 3 moves by scanning this QR code or click the link

Previous article : [« Hard Chess puzzle # 0079 - Gain opponent's queen in 3 moves](#)

Next article : [Hard chess puzzles »](#)

[Back to top](#)

[Contact Us](#)