



Hard Chess Puzzle # 0075

By

G Bud Games
<https://gbud.in>

November 18, 2021

Contents

Hard Chess puzzle # 0075 - Mate in 4 moves	4
Hard chess puzzle 0075	4
Solution to hard chess puzzle 0075	5
Solution 1	5
Right moves for the solution to the hard chess puzzle 0075	9
Explanation for the moves	9
Categories of hard chess puzzle 0075	10
How to view the solution to hard chess puzzle 0075	10
How to get help for moves in the hard chess puzzle 0075	11
Play chess for free	13

List of Figures

1	Solve this hard chess puzzle 0075. Mate in 4 moves @ https://gbud.in/g8000m3	4
2	Solve this hard chess puzzle online with solution @ https://gbud.in/g8000m3	4
3	Initial board position of hard chess puzzle 0075	5
4	Rxg3+ - Rook sacrifices itself to open the h file for your queen. If the rook blocks this check, you can end the game by capturing it with your queen	6
5	hxc3 - Opponent's pawn captures your rook	6
6	Bc5 - Your bishop pins the opponent's rook to their queen. Hence the rook can not move from its place	7
7	e3 - Opponent moves their pawn in e file to unpin their rook	7
8	Bxe3 - Since the pawn is not supported your bishop captures the pawn and pins the rook to king again	8
9	b4 - Since the opponent's king and rook can not move, they move one of their pawns	8
10	Ne2# - Your knight moves in and checkmate. King has no free squares to move as the nearby squares are attacked by your queen and the rook can not capture this knight since it is pinned to their king. This is how you can mate in 4 moves	9
11	Click the solution button to view solutions @ https://gbud.in/g8000m3	11
12	Click the help button to get help on next move @ https://gbud.in/g8000m3	12

13	Solve more hard puzzles @ https://gbud.in/chshdpz	12
14	Solve other puzzles @ https://gbud.in/chsgppz	12
15	Play chess online for free. Solve puzzles and play with friends	13
16	Solve this puzzle online by scanning this QR code or go to the link below	14

Hard Chess puzzle # 0075 - Mate in 4 moves

Solve this hard chess puzzle and improve your chess games through improvement of your chess strategies and chess tactics. This hard puzzle is a subset of [kids games](#).

Puzzle No : 0075

Difficulty level : hard

Description : Mate in 4 moves

Next Move : Black

Player level : Advanced

Short URL for puzzle : <https://gbud.in/g8000m3>

Hard chess puzzle 0075

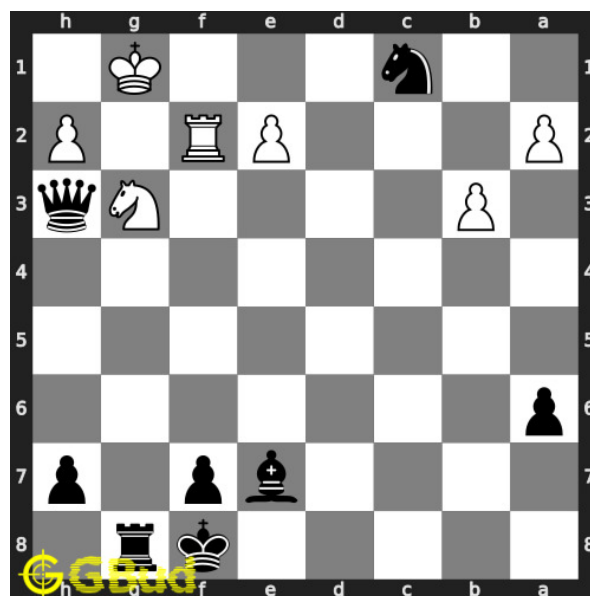


Figure 1: Solve this hard chess puzzle 0075. Mate in 4 moves @ <https://gbud.in/g8000m3>



Figure 2: Solve this hard chess puzzle online with solution @ <https://gbud.in/g8000m3>

Solution to hard chess puzzle 0075

At this puzzle, next [move](#) is by [Black](#). The objective of the puzzle is to mate in 4 moves.

See the interactive solution at the [puzzle page](#)

Solution 1

Initial board position This is the initial board position of hard chess puzzle 0075.

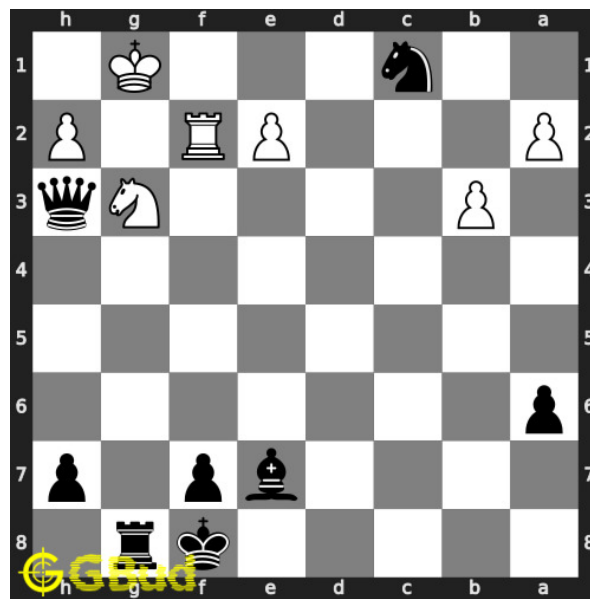


Figure 3: Initial board position of hard chess puzzle 0075

Move 1 Move by black

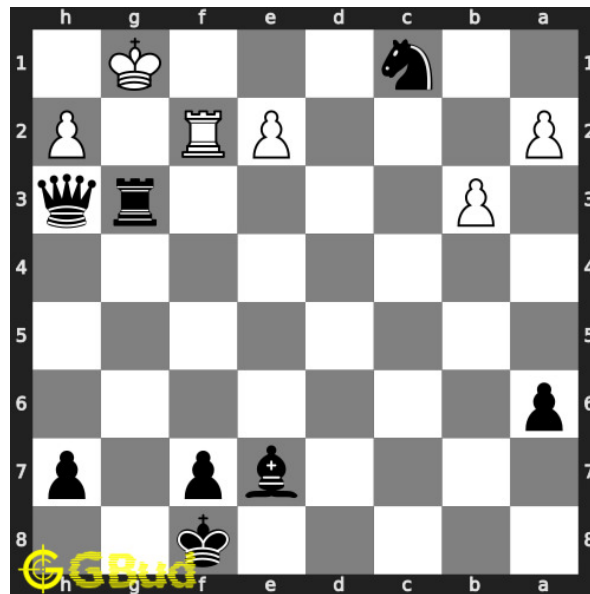


Figure 4: R_xg3+ - Rook sacrifices itself to open the h file for your queen. If the rook blocks this check, you can end the game by capturing it with your queen

Move 2 Move by white

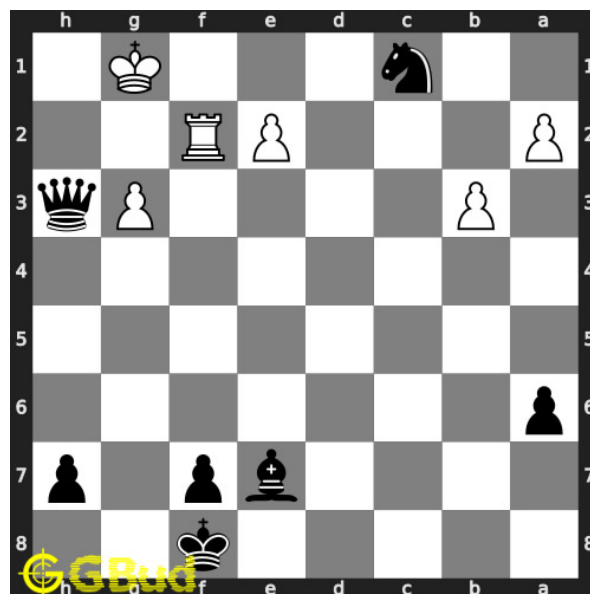


Figure 5: hxg3 - Opponent's pawn captures your rook

Move 3 Move by black

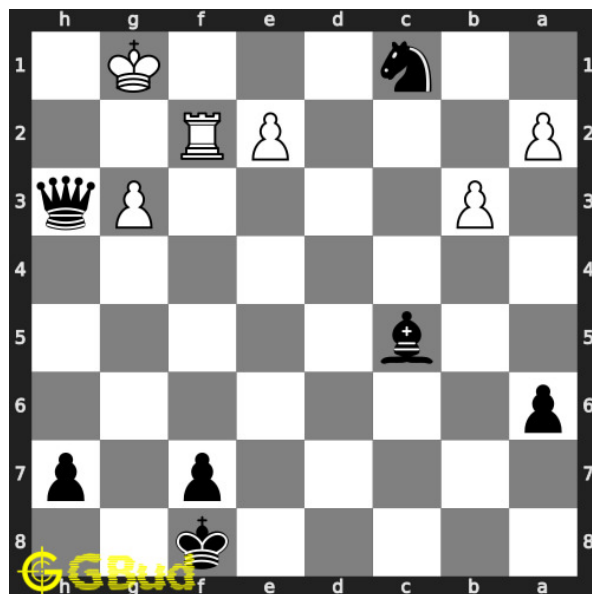


Figure 6: Bc5 - Your bishop pins the opponent's rook to their queen. Hence the rook can not move from its place

Move 4 Move by white

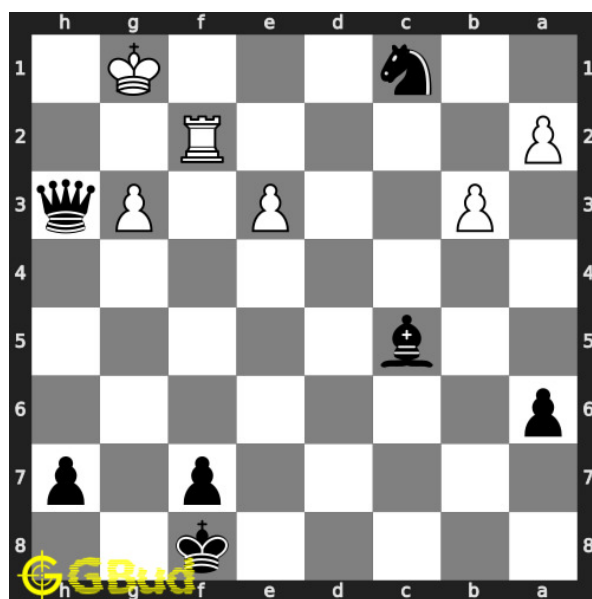


Figure 7: e3 - Opponent moves their pawn in e file to unpin their rook

Move 5 Move by black

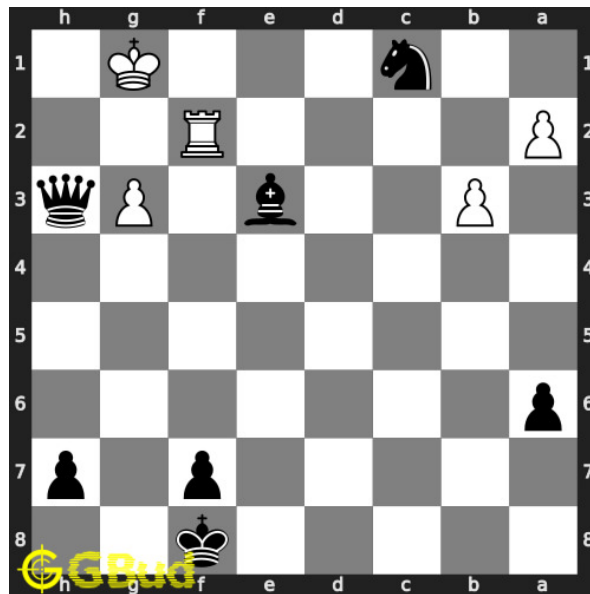


Figure 8: Bxe3 - Since the pawn is not supported your bishop captures the pawn and pins the rook to king again

Move 6 Move by white

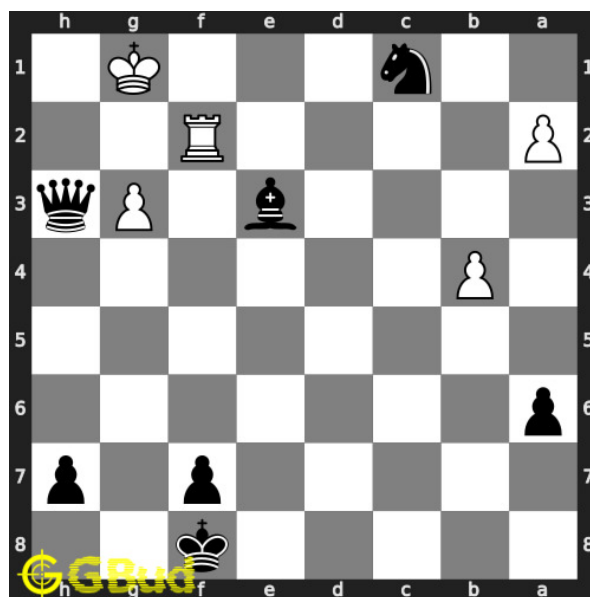


Figure 9: b4 - Since the opponent's king and rook can not move, they move one of their pawns

Move 7 Move by black

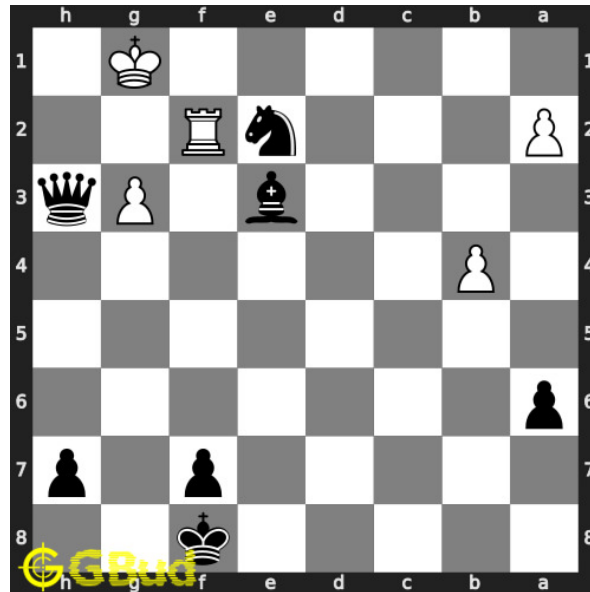


Figure 10: Ne2# - Your knight moves in and checkmate. King has no free squares to move as the nearby squares are attacked by your queen and the rook can not capture this knight since it is pinned to their king. This is how you can mate in 4 moves

Right moves for the solution to the hard chess puzzle 0075

Based on the objective of the puzzle, you have to make the right moves. Following are the right moves

1. Rxd3+, Bc5, Bxe3, Ne2#

Explanation for the moves

1. Rxd3+ - Rook sacrifices itself to open the d file for your queen. If the rook blocks this check, you can end the game by capturing it with your queen
2. hxg3 - Opponent's pawn captures your rook
3. Bc5 - Your bishop pins the opponent's rook to their queen. Hence the rook can not move from its place
4. e3 - Opponent moves their pawn in e file to unpin their rook
5. Bxe3 - Since the pawn is not supported your bishop captures the pawn and pins the rook to king again
6. b4 - Since the opponent's king and rook can not move, they move one of their pawns
7. Ne2# - Your knight moves in and checkmate. King has no free squares to move as the nearby squares are attacked by your queen

and the rook can not capture this knight since it is pinned to their king. This is how you can mate in 4 moves

8. For right move - You have used the combination of sacrifice and pin effectively to have a mate in 4 moves. Keep up the hard work
9. For wrong move - You could have sacrificed your rook to have a mate in 4 moves. Try again

Categories of hard chess puzzle 0075

This hard chess puzzle falls in these categories.

1. [Hard chess puzzles](#)
2. [Sacrifice puzzles in chess](#)
3. [Endgame puzzles in chess](#)
4. [Strategy puzzles in chess](#)
5. [Mate in 4 puzzles in chess](#)
6. [Pin puzzles in chess](#)
7. [Rook puzzles in chess](#)
8. [Knight puzzles in chess](#)
9. [Bishop puzzles in chess](#)

How to view the solution to hard chess puzzle 0075

To view the [solution to this puzzle](#), follow the steps given below

1. Go to the [puzzle page](#)
2. Click the solution button (Key as shown [below](#)) to view the solution



Figure 11: Click the solution button to view solutions @ <https://gbud.in/g8000m3>

How to get help for moves in the hard chess puzzle 0075

To get help or the possible next moves in the puzzle, , follow the steps given below

1. Go to the [puzzle page](#)
2. Click the help button (exclamation mark as shown [below](#)) to get help or suggestion on next possible [move](#)



Figure 12: Click the help button to get help on next move @ <https://gbud.in/g8000m3>



Figure 13: Solve more hard puzzles @ <https://gbud.in/chshdpz>



Figure 14: Solve other puzzles @ <https://gbud.in/chsgppz>

Play chess for free

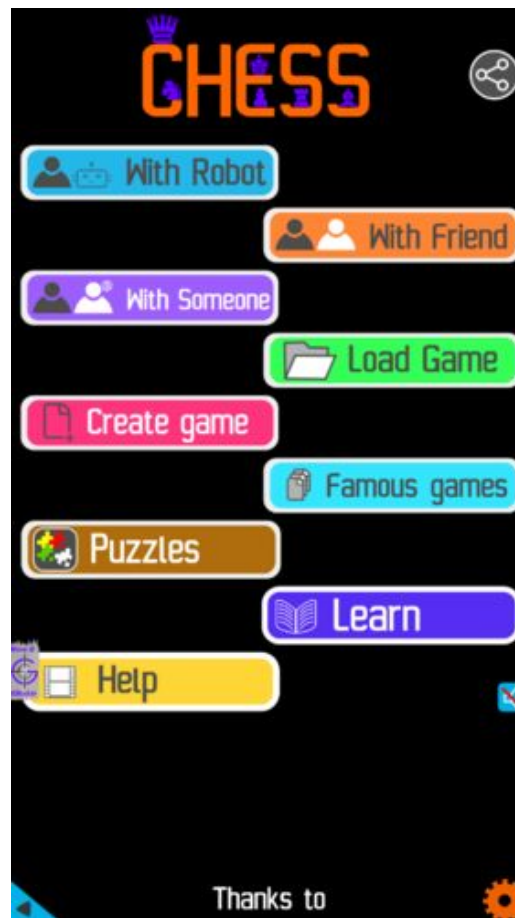


Figure 15: Play chess online for free. Solve puzzles and play with friends

Play chess for free at <https://gbud.in/chs>

We present you a platform to play chess online with friends for free. No need to install any app. You can play chess for free without registration or login.

Simple. You can do several chess related activities.

1. [solve chess puzzles](#)
2. [learn about chess](#)
3. [play chess with computer](#)
4. [play chess with friend](#)
5. [create your own chess games](#)
6. [fen viewer](#)
7. [fen editor](#)
8. [fen generator](#)
9. [pgn viewer](#)
10. [chess board editor](#)

11. [view famous chess games.](#)



Figure 16: Solve this puzzle online by scanning this QR code or go to the link below

<https://gbud.in/g8000m3>

Read the latest article on Hard Chess puzzle # 0075 - Mate in 4 moves by scanning this QR code or click the link

Previous article : [« Hard Chess puzzle # 0074 - Mate in 3 moves](#)

Next article : [Hard chess puzzles »](#)

[Back to top](#)

[Contact Us](#)

© GBud Games 2021