



## Hard Chess Puzzle # 0073

By

G Bud Games  
<https://gbud.in>

November 16, 2021

## Contents

<b>Hard Chess puzzle # 0073 - Gain opponent's queen</b>	<b>3</b>
Hard chess puzzle 0073 . . . . .	3
Solution to hard chess puzzle 0073 . . . . .	4
Solution 1 . . . . .	4
Right moves for the solution to the hard chess puzzle 0073	6
Explanation for the moves . . . . .	6
Categories of hard chess puzzle 0073 . . . . .	7
How to view the solution to hard chess puzzle 0073 . . . . .	7
How to get help for moves in the hard chess puzzle 0073 . . . . .	8
Play chess for free . . . . .	9

## List of Figures

1	Solve this hard chess puzzle 0073. Gain opponent's queen @ <a href="https://gbud.in/gwf1w93">https://gbud.in/gwf1w93</a> . . . . .	3
2	Solve this hard chess puzzle online with solution @ <a href="https://gbud.in/gwf1w93">https://gbud.in/gwf1w93</a> . . . . .	3
3	Initial board position of hard chess puzzle 0073 . . . . .	4
4	d4 - You have a possibility to have a checkmate by moving your queen to f8. But f8 is supported by the opponent's queen. If you deflect the opponent's queen, you can have a checkmate. Your pawn moved and threatened opponent's queen. If the queen responds by capturing your pawn, you can have a checkmate. This is also a decoy move . . . . .	5
5	Bb7 - Opponent realised the possible checkmate and moved their bishop so that the rook can give support to f8 . . . . .	5
6	dxc5 - Since the queen did not respond to the threat from your pawn, the pawn captures the opponent's queen. This is how you can get the queen in 2 moves. . . . .	6
7	Click the solution button to view solutions @ <a href="https://gbud.in/gwf1w93">https://gbud.in/gwf1w93</a> . . . . .	7
8	Click the help button to get help on next move @ <a href="https://gbud.in/gwf1w93">https://gbud.in/gwf1w93</a> . . . . .	8
9	Solve more hard puzzles @ <a href="https://gbud.in/chshdpz">https://gbud.in/chshdpz</a> . . . . .	8
10	Solve other puzzles @ <a href="https://gbud.in/chsgppz">https://gbud.in/chsgppz</a> . . . . .	8
11	Play chess online for free. Solve puzzles and play with friends	9
12	Solve this puzzle online by scanning this QR code or go to the link below . . . . .	10

## Hard Chess puzzle # 0073 - Gain opponent's queen

Solve this hard chess puzzle and improve your chess games through improvement of your chess strategies and chess tactics. This hard puzzle is a subset of [kids games](#).

Puzzle No : 0073

Difficulty level : hard

Description : Gain opponent's queen

Next Move : White

Player level : Advanced

Short URL for puzzle : <https://gbud.in/gwf1w93>

### Hard chess puzzle 0073

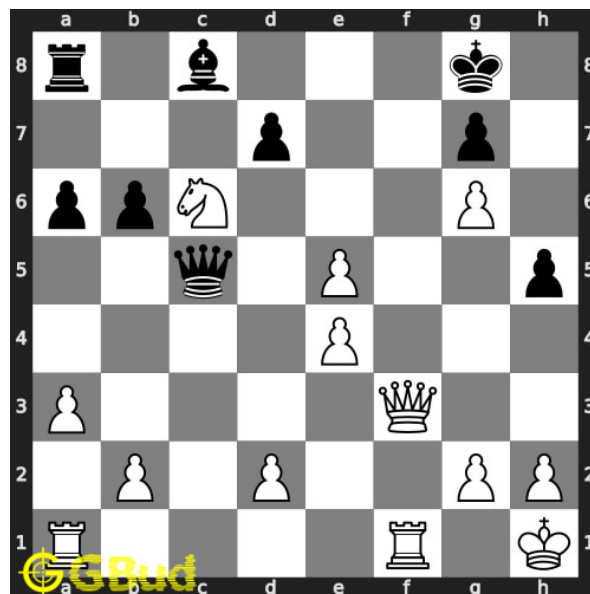


Figure 1: Solve this hard chess puzzle 0073. Gain opponent's queen @ <https://gbud.in/gwf1w93>



Figure 2: Solve this hard chess puzzle online with solution @ <https://gbud.in/gwf1w93>

## Solution to hard chess puzzle 0073

At this puzzle, next **move** is by **White**. The objective of the puzzle is to gain opponent's queen.

See the interactive solution at the [puzzle page](#)

### Solution 1

**Initial board position** This is the initial board position of hard chess puzzle 0073.

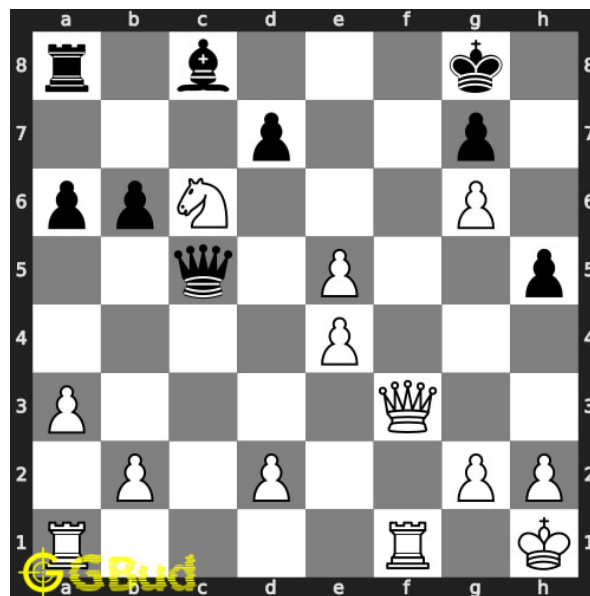


Figure 3: Initial board position of hard chess puzzle 0073

**Move 1** Move by white

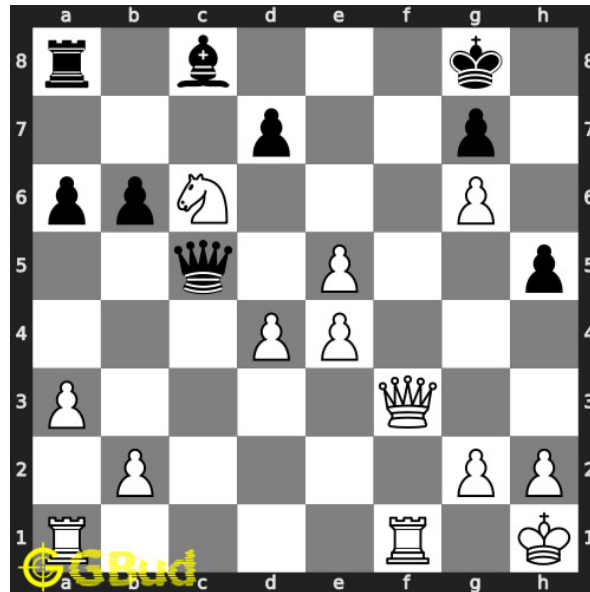


Figure 4: d4 - You have a possibility to have a checkmate by moving your queen to f8. But f8 is supported by the opponent's queen. If you deflect the opponent's queen, you can have a checkmate. Your pawn moved and threatened opponent's queen. If the queen responds by capturing your pawn, you can have a checkmate. This is also a decoy move

**Move 2** Move by black

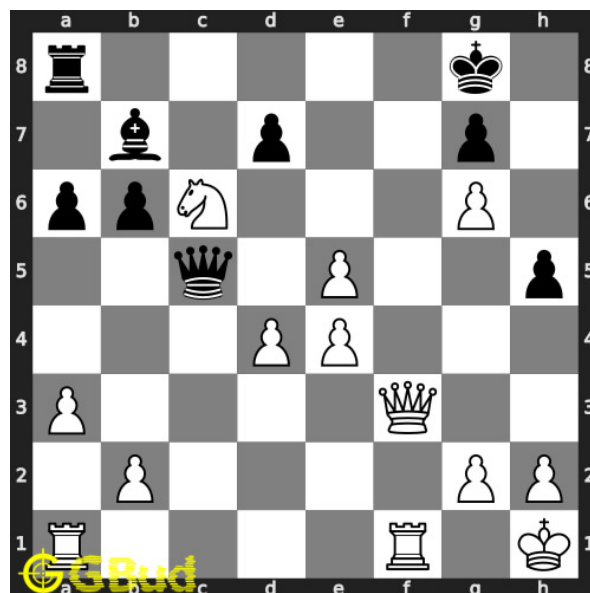


Figure 5: Bb7 - Opponent realised the possible checkmate and moved their bishop so that the rook can give support to f8

**Move 3** Move by white

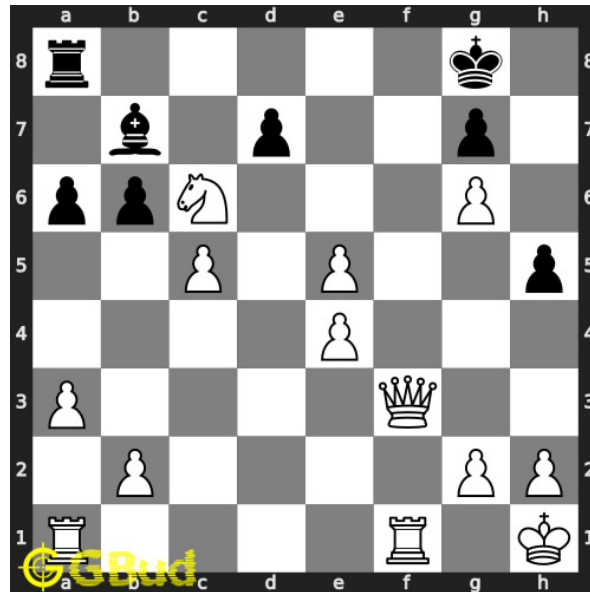


Figure 6: dxc5 - Since the queen did not respond to the threat from your pawn, the pawn captures the opponent's queen. This is how you can get the queen in 2 moves.

### Right moves for the solution to the hard chess puzzle 0073

Based on the objective of the puzzle, you have to make the right moves. Following are the right moves

1. d4, dxc5

### Explanation for the moves

1. d4 - You have a possibility to have a checkmate by moving your queen to f8. But f8 is supported by the opponent's queen. If you deflect the opponent's queen, you can have a checkmate. Your pawn moved and threatened opponent's queen. If the queen responds by capturing your pawn, you can have a checkmate. This is also a decoy move
2. Bb7 - Opponent realised the possible checkmate and moved their bishop so that the rook can give support to f8
3. dxc5 - Since the queen did not respond to the threat from your pawn, the pawn captures the opponent's queen. This is how you can get the queen in 2 moves.
4. For right move - You have gained the queen by a simple movement of a pawn. It was a wise decision

5. For wrong move - You could have moved one of your pawns to gain the opponent's queen. Do not stop trying

## Categories of hard chess puzzle 0073

This hard chess puzzle falls in these categories.

1. [Hard chess puzzles](#)
2. [Gain puzzles in chess](#)
3. [Decoy puzzles in chess](#)
4. [Strategy puzzles in chess](#)
5. [Pawn puzzles in chess](#)

## How to view the solution to hard chess puzzle 0073

To view the [solution to this puzzle](#), follow the steps given below

1. Go to the [puzzle page](#)
2. Click the solution button (Key as shown [below](#)) to view the solution



Figure 7: Click the solution button to view solutions @ <https://gbud.in/gwflw93>

## How to get help for moves in the hard chess puzzle 0073

To get help or the possible next moves in the puzzle, , follow the steps given below

1. Go to the [puzzle page](#)
2. Click the help button (exclamation mark as shown [below](#)) to get help or suggestion on next possible [move](#)



Figure 8: Click the help button to get help on next move @ <https://gbud.in/gwflw93>



Figure 9: Solve more hard puzzles @ <https://gbud.in/chshdpz>



Figure 10: Solve other puzzles @ <https://gbud.in/chsgppz>



## Play chess for free



Figure 11: Play chess online for free. Solve puzzles and play with friends

Play chess for free at <https://gbud.in/chs>

We present you a platform to play chess online with friends for free. No need to install any app. You can play chess for free without registration or login.

Simple. You can do several chess related activities.

1. solve chess puzzles
2. learn about chess
3. play chess with computer
4. play chess with friend
5. create your own chess games

6. [fen viewer](#)
7. [fen editor](#)
8. [fen generator](#)
9. [pgn viewer](#)
10. [chess board editor](#)
11. [view famous chess games.](#)



Figure 12: Solve this puzzle online by scanning this QR code or go to the link below

<https://gbud.in/gwflw93>

Read the latest article on Hard Chess puzzle # 0073 - Gain opponent's queen by scanning this QR code or click the link

Previous article : « [Hard Chess puzzle # 0072 - Mate in 3 moves](#)

Next article : [Hard chess puzzles](#) »

[Back to top](#)

[Contact Us](#)