



Hard Chess Puzzle # 0058

By

G Bud Games
<https://gbud.in>

October 30, 2021

Contents

Hard Chess puzzle # 0058 - Gain knight	4
Hard chess puzzle 0058	4
Solution to hard chess puzzle 0058	5
Solution 1	5
Right moves for the solution to the hard chess puzzle 0058	8
Explanation for the moves	8
Categories of hard chess puzzle 0058	9
How to view the solution to hard chess puzzle 0058	9
How to get help for moves in the hard chess puzzle 0058	10
Play chess for free	11

List of Figures

1	Solve this hard chess puzzle 0058. Gain knight @ https://gbud.in/gkmlfj3	4
2	Solve this hard chess puzzle online with solution @ https://gbud.in/gkmlfj3	4
3	Initial board position of hard chess puzzle 0058	5
4	Qc4 - Since the knight is hanging, you can capture it with a fork by the rook. But the fork will be stopped by the opponent's rook. This queen's move will pin opponent's rook to their king so that the rook can not move from the present position	6
5	h6 - Since their rook is pinned, your opponent realised that there is a possibility of a back-rank mate. Hence they get a breathing square by moving the pawn	6
6	Re8+ - Through a check, your rook forks opponent's king and knight. Their rook can not block this attack since it is pinned by your queen.	7
7	Kh7 - King escapes from the check threat	7
8	Rxa8 - Your rook captures the opponent's hanging knight. This is how you can gain the knight	8
9	Click the solution button to view solutions @ https://gbud.in/gkmlfj3	9
10	Click the help button to get help on next move @ https://gbud.in/gkmlfj3	10
11	Solve more hard puzzles @ https://gbud.in/chshdpz	10
12	Solve other puzzles @ https://gbud.in/chsgppz	10

13	Play chess online for free. Solve puzzles and play with friends	11
14	Solve this puzzle online by scanning this QR code or go to the link below	12

Hard Chess puzzle # 0058 - Gain knight

Solve this hard chess puzzle and improve your chess games through improvement of your chess strategies and chess tactics. This hard puzzle is a subset of [kids games](#).

Puzzle No : 0058

Difficulty level : hard

Description : Gain knight

Next Move : White

Player level : Advanced

Short URL for puzzle : <https://gbud.in/gkmlfj3>

Hard chess puzzle 0058

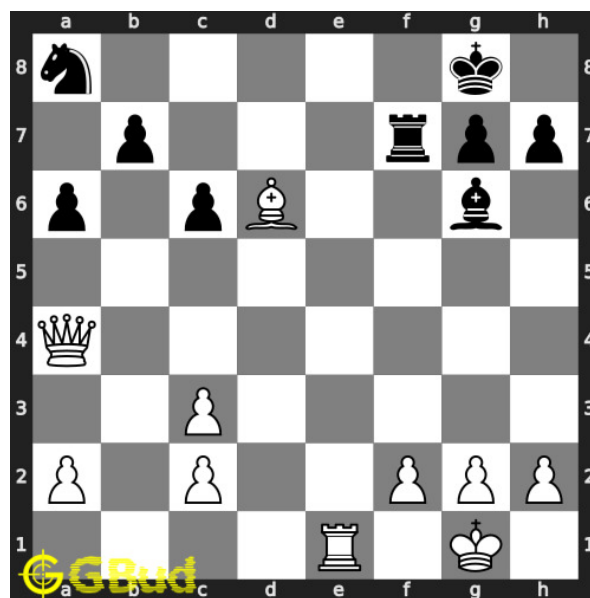


Figure 1: Solve this hard chess puzzle 0058. Gain knight @ <https://gbud.in/gkmlfj3>



Figure 2: Solve this hard chess puzzle online with solution @ <https://gbud.in/gkmlfj3>

Solution to hard chess puzzle 0058

At this puzzle, next **move** is by **White**. The objective of the puzzle is to gain knight.

See the interactive solution at the [puzzle page](#)

Solution 1

Initial board position This is the initial board position of hard chess puzzle 0058.

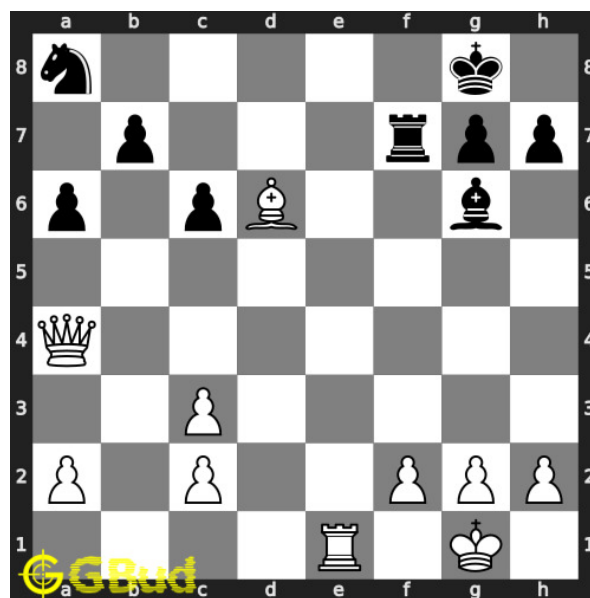


Figure 3: Initial board position of hard chess puzzle 0058

Move 1 Move by white

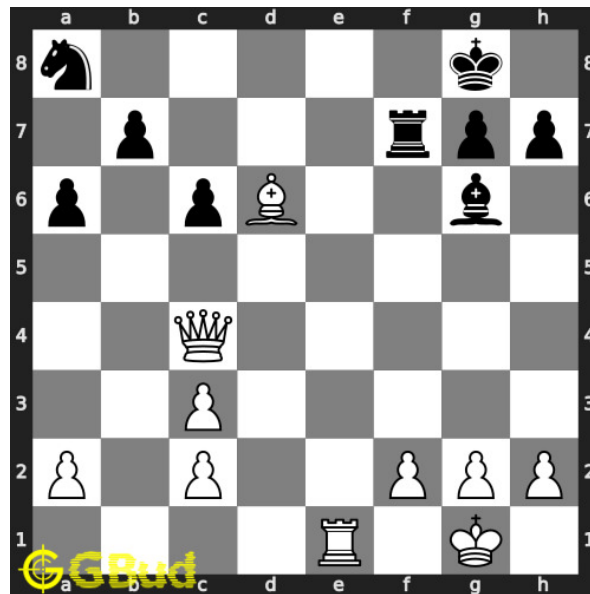


Figure 4: Qc4 - Since the knight is hanging, you can capture it with a fork by the rook. But the fork will be stopped by the opponent's rook. This queen's move will pin opponent's rook to their king so that the rook can not move from the present position

Move 2 Move by black

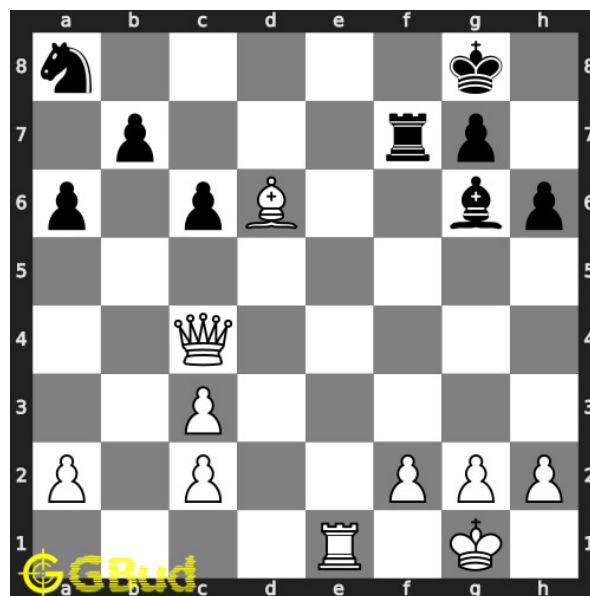


Figure 5: h6 - Since their rook is pinned, your opponent realised that there is a possibility of a back-rank mate. Hence they get a breathing square by moving the pawn

Move 3 Move by white

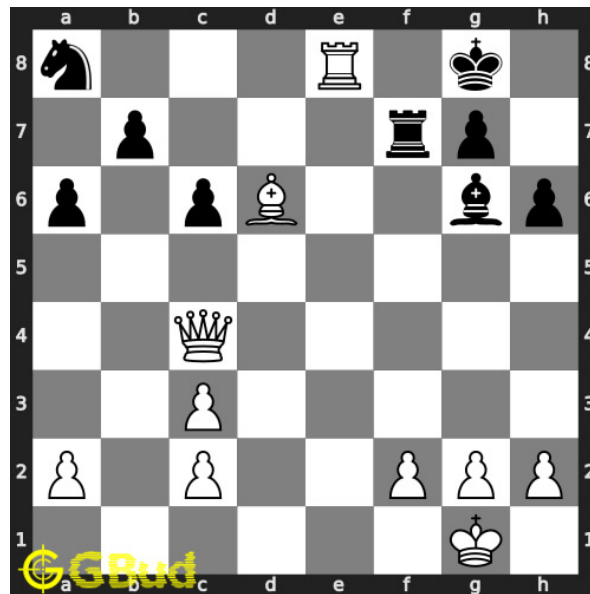


Figure 6: Re8+ - Through a check, your rook forks opponent's king and knight. Their rook can not block this attack since it is pinned by your queen.

Move 4 Move by black

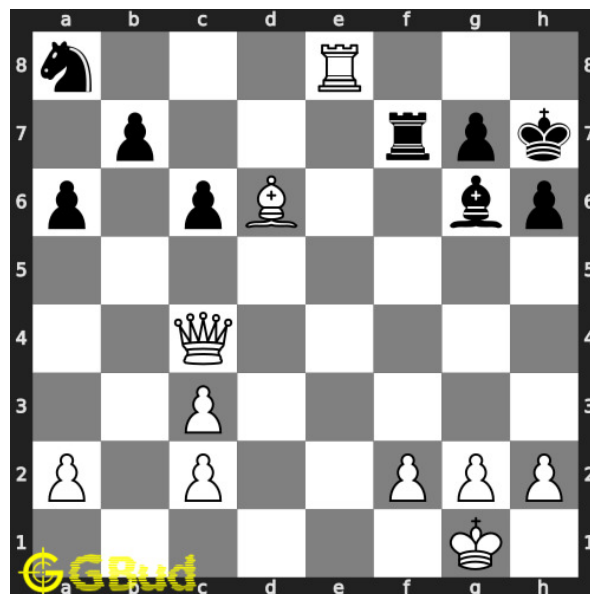


Figure 7: Kh7 - King escapes from the check threat

Move 5 Move by white

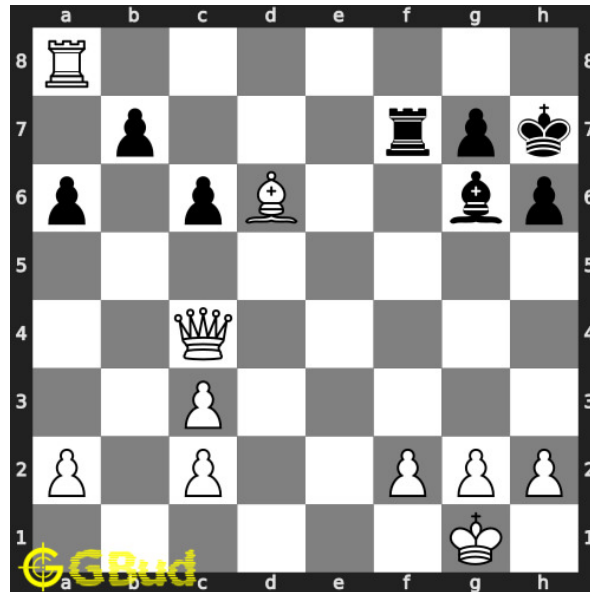


Figure 8: Rxa8 - Your rook captures the opponent's hanging knight. This is how you can gain the knight

Right moves for the solution to the hard chess puzzle 0058

Based on the objective of the puzzle, you have to make the right moves. Following are the right moves

1. Qc4, Re8+, Rxa8

Explanation for the moves

1. Qc4 - Since the knight is hanging, you can capture it with a fork by the rook. But the fork will be stopped by the opponent's rook. This queen's move will pin opponent's rook to their king so that the rook can not move from the present position
2. Re8+ - Through a check, your rook forks opponent's king and knight. Their rook can not block this attack since it is pinned by your queen.
3. Rxa8 - Your rook captures the opponent's hanging knight. This is how you can gain the knight
4. h6 - Since their rook is pinned, your opponent realised that there is a possibility of a back-rank mate. Hence they get a breathing square by moving the pawn
5. Kh7 - King escapes from the check threat
6. For right move - You have gained the knight after pinning the rook to the king. It was a good strategy

7. For wrong move - You could have pinned your opponent's rook to their king and gained the knight. Try again

Categories of hard chess puzzle 0058

This hard chess puzzle falls in these categories.

1. [Hard chess puzzles](#)
2. [Gain puzzles in chess](#)
3. [Fork puzzles in chess](#)
4. [Strategy puzzles in chess](#)

How to view the solution to hard chess puzzle 0058

To view the [solution to this puzzle](#), follow the steps given below

1. Go to the [puzzle page](#)
2. Click the solution button (Key as shown [below](#)) to view the solution



Figure 9: Click the solution button to view solutions @ <https://gbud.in/gkmlfj3>

How to get help for moves in the hard chess puzzle 0058

To get help or the possible next moves in the puzzle, , follow the steps given below

1. Go to the [puzzle page](#)
2. Click the help button (exclamation mark as shown [below](#)) to get help or suggestion on next possible [move](#)



Figure 10: Click the help button to get help on next move @ <https://gbud.in/gkmlfj3>



Figure 11: Solve more hard puzzles @ <https://gbud.in/chshdpz>



Figure 12: Solve other puzzles @ <https://gbud.in/chsgppz>

Play chess for free

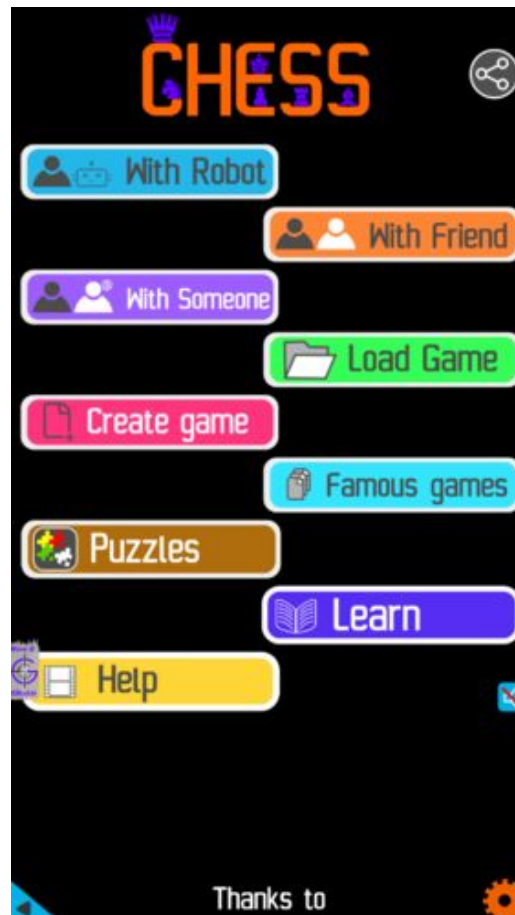


Figure 13: Play chess online for free. Solve puzzles and play with friends

Play chess for free at <https://gbud.in/chs>

We present you a platform to play chess online with friends for free. No need to install any app. You can play chess for free without registration or login.

Simple. You can do several chess related activities.

1. [solve chess puzzles](#)
2. [learn about chess](#)
3. [play chess with computer](#)
4. [play chess with friend](#)
5. [create your own chess games](#)

6. [fen viewer](#)
7. [fen editor](#)
8. [fen generator](#)
9. [pgn viewer](#)
10. [chess board editor](#)
11. [view famous chess games.](#)



Figure 14: Solve this puzzle online by scanning this QR code or go to the link below

<https://gbud.in/gkmlfj3>

Read the latest article on Hard Chess puzzle # 0058 - Gain knight by scanning this QR code or click the link

Previous article : « [Hard Chess puzzle # 0057 - Mate in 2 moves](#)

Next article : [Hard chess puzzles](#) »

[Back to top](#)

[Contact Us](#)