



Hard Chess Puzzle # 0039

By

G Bud Games
<https://gbud.in>

October 11, 2021

Contents

Hard Chess puzzle # 0039 - Mate in 3 moves	4
Hard chess puzzle 0039	4
Solution to hard chess puzzle 0039	5
Solution 1	5
Solution 2	8
Right moves for the solution to the hard chess puzzle 0039	11
Explanation for the moves	11
Categories of hard chess puzzle 0039	12
How to view the solution to hard chess puzzle 0039	12
How to get help for moves in the hard chess puzzle 0039	13
Play chess for free	14

List of Figures

1	Solve this hard chess puzzle 0039. Mate in 3 moves @ https://gbud.in/gfwngy3	4
2	Solve this hard chess puzzle online with solution @ https://gbud.in/gfwngy3	4
3	Initial board position of hard chess puzzle 0039	5
4	Ng6+ - This sacrifice of the knight is a zugzwang move since it forces the pawn at h file to capture it which will put your opponent at disadvantage	6
5	hxg6 - Pawn captures the knight to escape from the check since this is the only legal move available	6
6	Rh3+ - This is another sacrifice to attract the bishop to h3	7
7	Bxh3 - This is another forced move as no other moves are available for the king to escape from the check	7
8	Qxh3# - King has no free squares to move and ends in a checkmate	8
9	Initial board position of hard chess puzzle 0039	8
10	Ng6+ - This sacrifice of the knight is a zugzwang move since it forces the pawn at h file to capture it which will put your opponent at disadvantage	9
11	hxg6 - Pawn captures the knight to escape from the check since this is the only legal move available	9
12	Qh3+ - The queen sacrifices itself to attract the bishop to h3	10
13	Bxh3 - This is another forced move as no other moves are available for the king to escape from the check	10

14	Rxx3# - King has no free squares to move and ends in a checkmate	11
15	Click the solution button to view solutions @ https://gbud. in/gfwngy3	12
16	Click the help button to get help on next move @ https: //gbud.in/gfwngy3	13
17	Solve more hard puzzles @ https://gbud.in/chshdpz	13
18	Solve other puzzles @ https://gbud.in/chsgppz	13
19	Play chess online for free. Solve puzzles and play with friends	14
20	Solve this puzzle online by scanning this QR code or go to the link below	15

Hard Chess puzzle # 0039 - Mate in 3 moves

Solve this hard chess puzzle and improve your chess games through improvement of your chess strategies and chess tactics. This hard puzzle is a subset of [kids games](#).

Puzzle No : 0039

Difficulty level : hard

Description : Mate in 3 moves

Next Move : White

Player level : Advanced

Short URL for puzzle : <https://gbud.in/gfwngy3>

Hard chess puzzle 0039

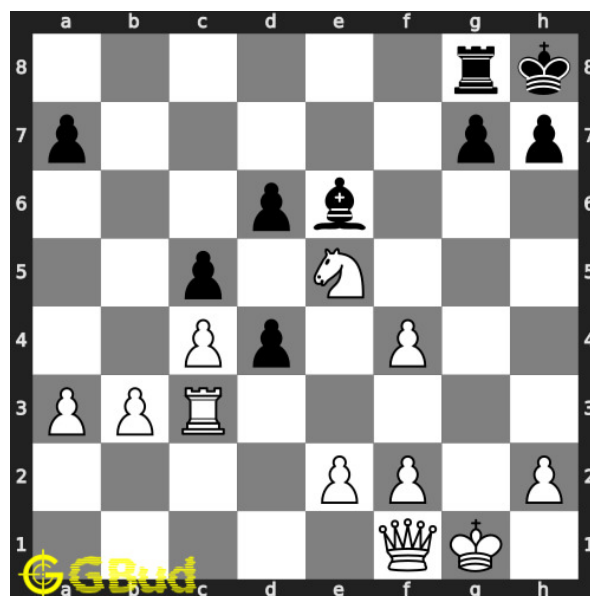


Figure 1: Solve this hard chess puzzle 0039. Mate in 3 moves @ <https://gbud.in/gfwngy3>



Figure 2: Solve this hard chess puzzle online with solution @ <https://gbud.in/gfwngy3>

Solution to hard chess puzzle 0039

At this puzzle, next **move** is by **White**. The objective of the puzzle is to mate in 3 moves.

See the interactive solution at the [puzzle page](#)

Solution 1

Initial board position This is the initial board position of hard chess puzzle 0039.

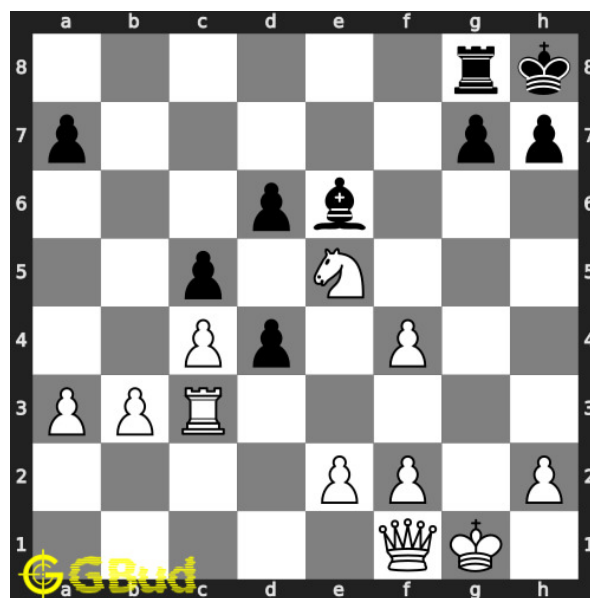


Figure 3: Initial board position of hard chess puzzle 0039

Move 1 Move by white

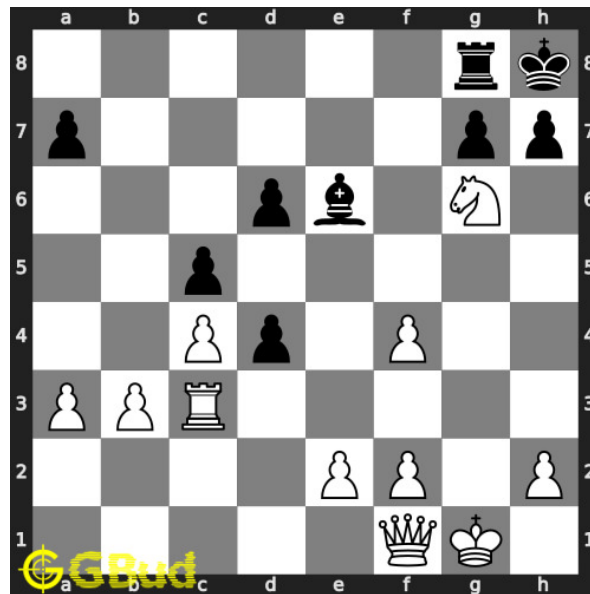


Figure 4: Ng6+ - This sacrifice of the knight is a zugzwang move since it forces the pawn at h file to capture it which will put your opponent at disadvantage

Move 2 Move by black

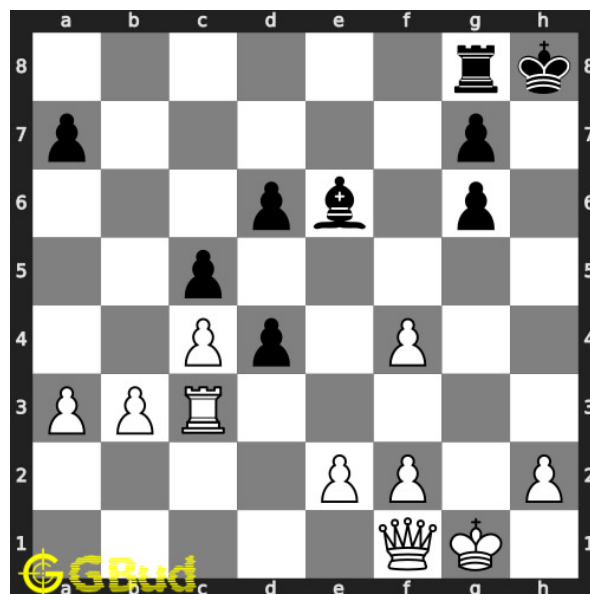


Figure 5: hxg6 - Pawn captures the knight to escape from the check since this is the only legal move available

Move 3 Move by white

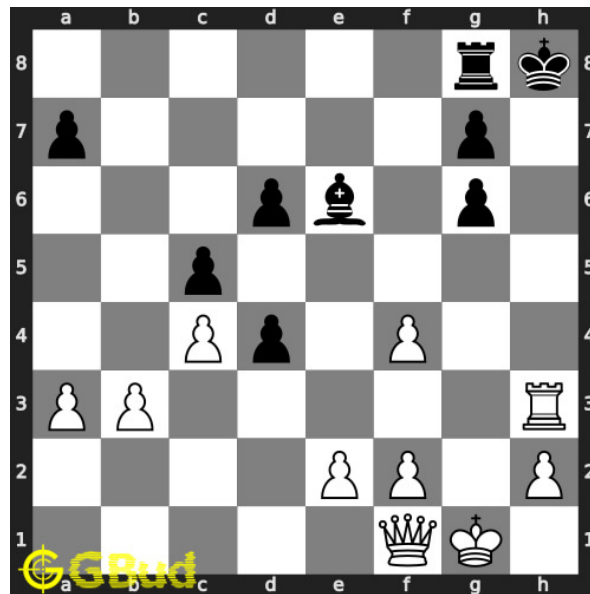


Figure 6: Rh3+ - This is another sacrifice to attract the bishop to h3

Move 4 Move by black

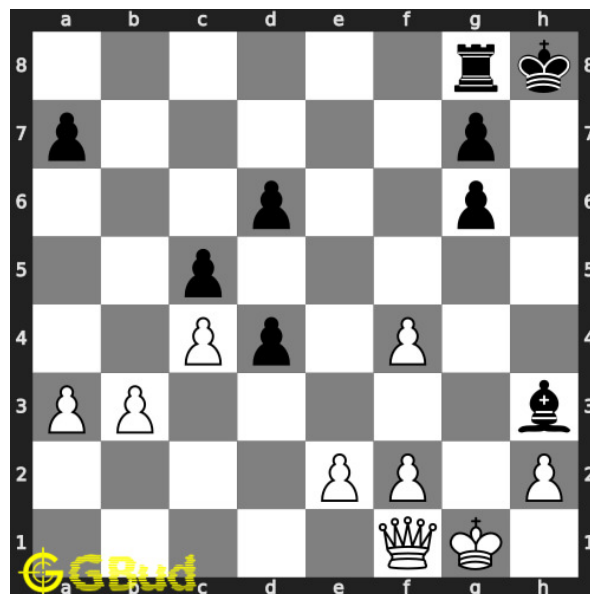


Figure 7: Bxh3 - This is another forced move as no other moves are available for the king to escape from the check

Move 5 Move by white

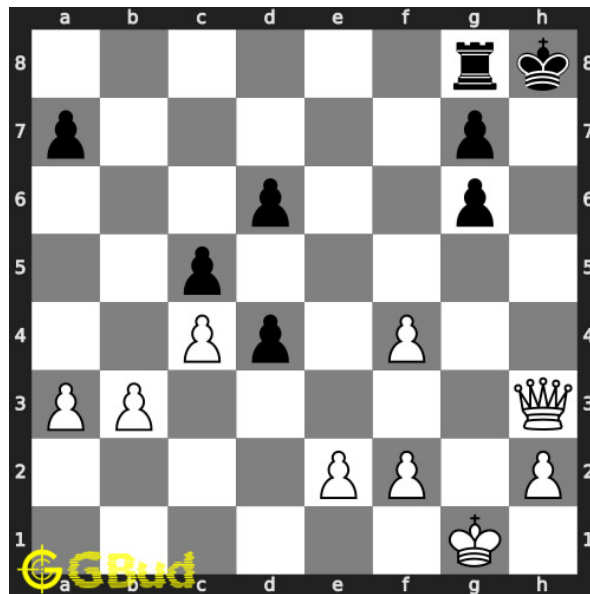


Figure 8: Qxh3# - King has no free squares to move and ends in a check-mate

Solution 2

Initial board position This is the initial board position of hard chess puzzle 0039.

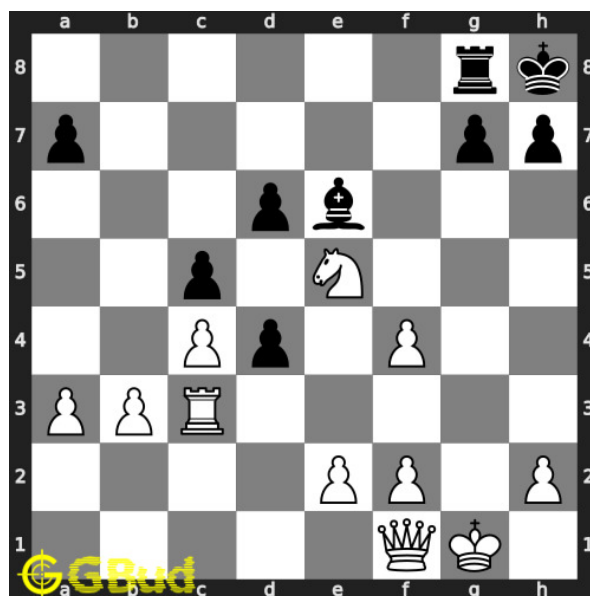


Figure 9: Initial board position of hard chess puzzle 0039

Move 1 Move by white

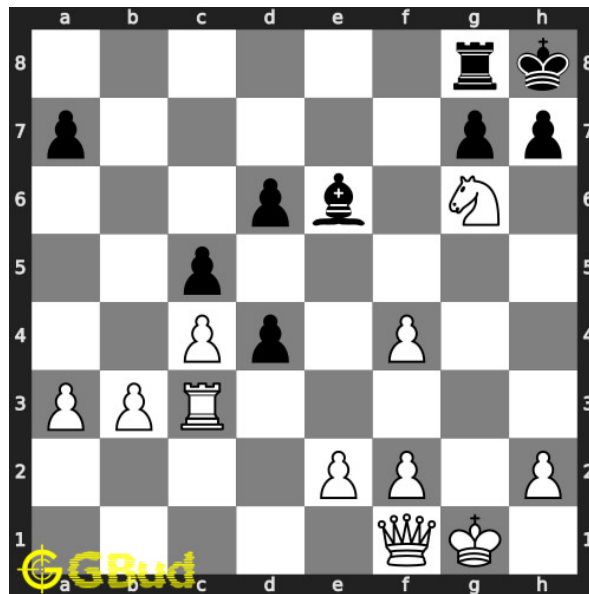


Figure 10: Ng6+ - This sacrifice of the knight is a zugzwang move since it forces the pawn at h file to capture it which will put your opponent at disadvantage

Move 2 Move by black

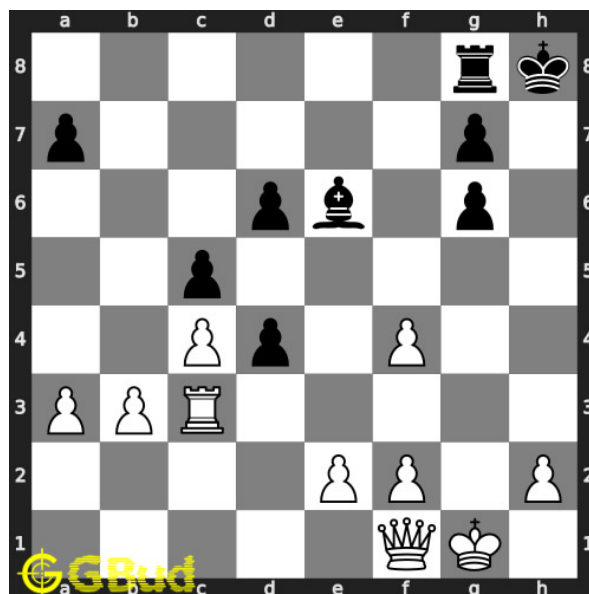


Figure 11: hxg6 - Pawn captures the knight to escape from the check since this is the only legal move available

Move 3 Move by white

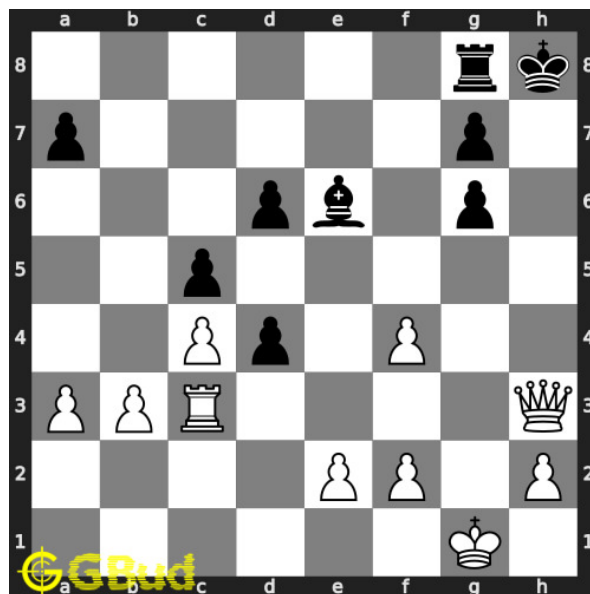


Figure 12: Qh3+ - The queen sacrifices itself to attract the bishop to h3

Move 4 Move by black

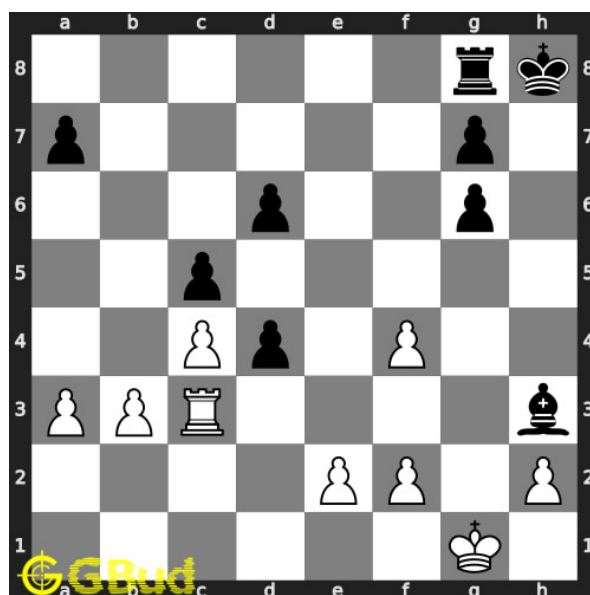


Figure 13: Bxh3 - This is another forced move as no other moves are available for the king to escape from the check

Move 5 Move by white

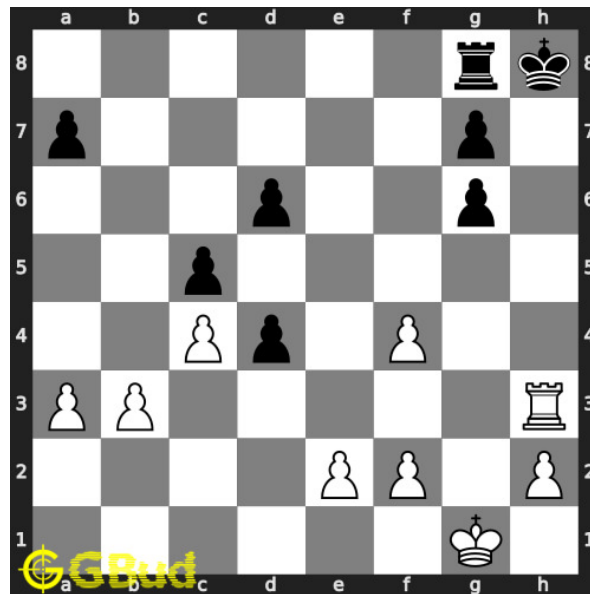


Figure 14: Rxh3# - King has no free squares to move and ends in a checkmate

Right moves for the solution to the hard chess puzzle 0039

Based on the objective of the puzzle, you have to make the right moves. Following are the right moves

1. Ng6+, Rh3+, Qxh3#
2. Ng6+, Qh3+, Rxh3#

Explanation for the moves

1. Ng6+ - This sacrifice of the knight is a zugzwang move since it forces the pawn at h file to capture it which will put your opponent at disadvantage
2. Rh3+ - This is another sacrifice to attract the bishop to h3
3. Qh3+ - The queen sacrifices itself to attract the bishop to h3
4. Qxh3# - King has no free squares to move and ends in a checkmate
5. Rxh3# - King has no free squares to move and ends in a checkmate
6. hxg6 - Pawn captures the knight to escape from the check since this is the only legal move available
7. Bxh3 - This is another forced move as no other moves are available for the king to escape from the check
8. For right move - You forced the pawn to open the h file with the zugzwang move and had a checkmate later. Good decision and a sacrifice

9. For wrong move - You should have had a zugzwang move and sacrificed your pieces to have a checkmate. Try again

Categories of hard chess puzzle 0039

This hard chess puzzle falls in these categories.

1. [Hard chess puzzles](#)
2. [Sacrifice puzzles in chess](#)
3. [Mate in 3 puzzles in chess](#)
4. [Endgame puzzles in chess](#)
5. [Strategy puzzles in chess](#)
6. [Zugzwang puzzles in chess](#)

How to view the solution to hard chess puzzle 0039

To view the [solution to this puzzle](#), follow the steps given below

1. Go to the [puzzle page](#)
2. Click the solution button (Key as shown [below](#)) to view the solution



Figure 15: Click the solution button to view solutions @ <https://gbud.in/gfwngy3>

How to get help for moves in the hard chess puzzle 0039

To get help or the possible next moves in the puzzle, , follow the steps given below

1. Go to the [puzzle page](#)
2. Click the help button (exclamation mark as shown [below](#)) to get help or suggestion on next possible [move](#)



Figure 16: Click the help button to get help on next move @ <https://gbud.in/gfwngy3>



Figure 17: Solve more hard puzzles @ <https://gbud.in/chshdpz>



Figure 18: Solve other puzzles @ <https://gbud.in/chsgppz>

Play chess for free

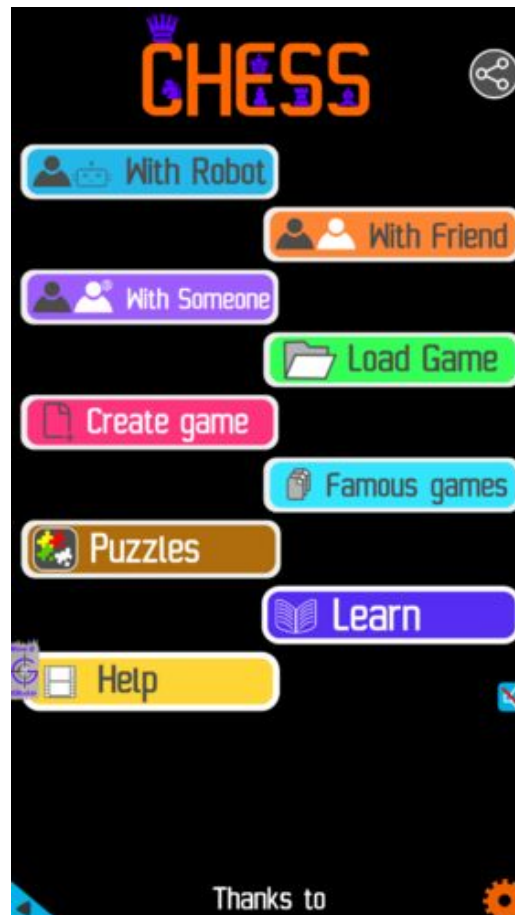


Figure 19: Play chess online for free. Solve puzzles and play with friends

Play chess for free at <https://gbud.in/chs>

We present you a platform to play chess online with friends for free. No need to install any app. You can play chess for free without registration or login.

Simple. You can do several chess related activities.

1. solve chess puzzles
2. learn about chess
3. play chess with computer
4. play chess with friend
5. create your own chess games

6. [fen viewer](#)
7. [fen editor](#)
8. [fen generator](#)
9. [pgn viewer](#)
10. [chess board editor](#)
11. [view famous chess games.](#)



Figure 20: Solve this puzzle online by scanning this QR code or go to the link below

<https://gbud.in/gfwngy3>

Read the latest article on Hard Chess puzzle # 0039 - Mate in 3 moves by scanning this QR code or click the link

Previous article : « [Hard Chess puzzle # 0038 - Get a queen in 5 moves](#)

Next article : [Hard Chess puzzle # 0040 - Gain queen](#) »

[Back to top](#)

[Contact Us](#)