



Hard Chess Puzzle # 0037

By

G Bud Games
<https://gbud.in>

October 9, 2021

Contents

Hard Chess puzzle # 0037 - Mate in 3 moves	4
Hard chess puzzle 0037	4
Solution to hard chess puzzle 0037	5
Solution 1	5
Solution 2	8
Right moves for the solution to the hard chess puzzle 0037	11
Explanation for the moves	11
Categories of hard chess puzzle 0037	12
How to view the solution to hard chess puzzle 0037	12
How to get help for moves in the hard chess puzzle 0037	12
Play chess for free	14

List of Figures

1	Solve this hard chess puzzle 0037. Mate in 3 moves @ https://gbud.in/gbxtbw3	4
2	Solve this hard chess puzzle online with solution @ https://gbud.in/gbxtbw3	4
3	Initial board position of hard chess puzzle 0037	5
4	Nb6+ - Beside giving a check, this movement of knight will give support to the queen in the final checkmate move	6
5	Kb8 - King is trying to escape from the attack	6
6	Qg8+ - Queen forces the king to move to seventh rank	7
7	Ka7 -	7
8	Qa8# - The king has no free squares to move. Hence it is a checkmate	8
9	Initial board position of hard chess puzzle 0037	8
10	Nb6+ - Beside giving a check, this movement of knight will give support to the queen in the final checkmate move	9
11	Ka7 -	9
12	Qg8 - This move is to restrict the movement of opponent's king	10
13	a5 - Since king can not move due to the presence of the queen, one of the pawns is moved	10
14	Qa8# - The king has no free squares to move. Hence it is a checkmate	11
15	Click the solution button to view solutions @ https://gbud.in/gbxtbw3	12

16	Click the help button to get help on next move @ https://gbud.in/gbxtbw3	13
17	Solve more hard puzzles @ https://gbud.in/chshdpz	13
18	Solve other puzzles @ https://gbud.in/chsgppz	13
19	Play chess online for free. Solve puzzles and play with friends	14
20	Solve this puzzle online by scanning this QR code or go to the link below	15

Hard Chess puzzle # 0037 - Mate in 3 moves

Solve this hard chess puzzle and improve your chess games through improvement of your chess strategies and chess tactics. This hard puzzle is a subset of [kids games](#).

Puzzle No : 0037

Difficulty level : hard

Description : Mate in 3 moves

Next Move : White

Player level : Advanced

Short URL for puzzle : <https://gbud.in/gbxtbw3>

Hard chess puzzle 0037

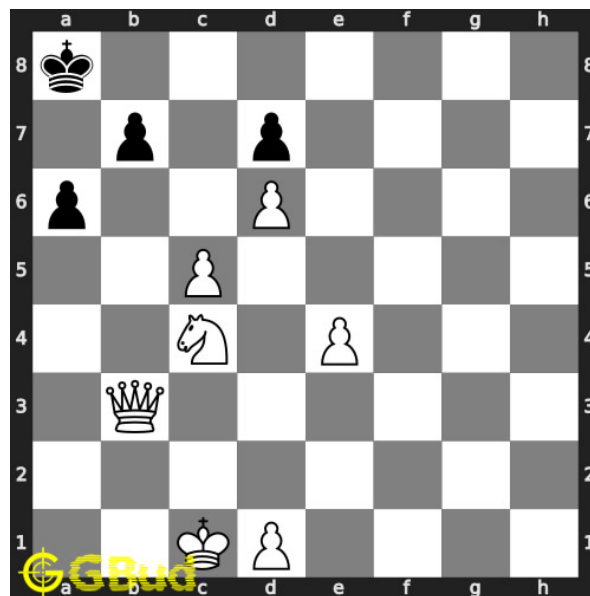


Figure 1: Solve this hard chess puzzle 0037. Mate in 3 moves @ <https://gbud.in/gbxtbw3>



Figure 2: Solve this hard chess puzzle online with solution @ <https://gbud.in/gbxtbw3>

Solution to hard chess puzzle 0037

At this puzzle, next **move** is by **White**. The objective of the puzzle is to mate in 3 moves.

See the interactive solution at the [puzzle page](#)

Solution 1

Initial board position This is the initial board position of hard chess puzzle 0037.

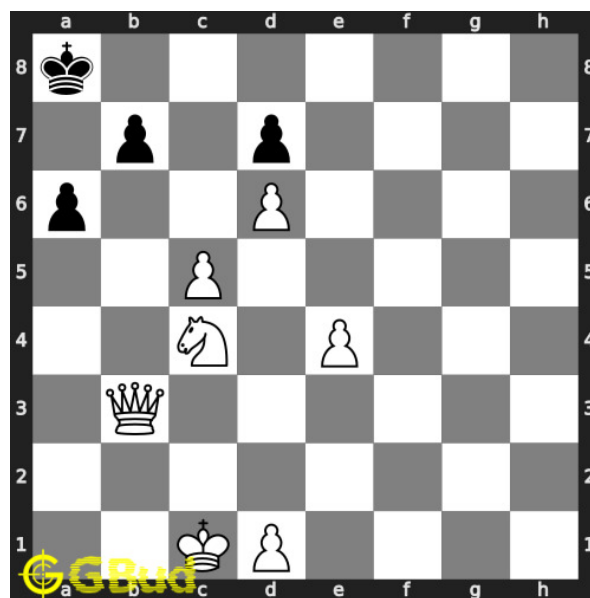


Figure 3: Initial board position of hard chess puzzle 0037

Move 1 Move by white

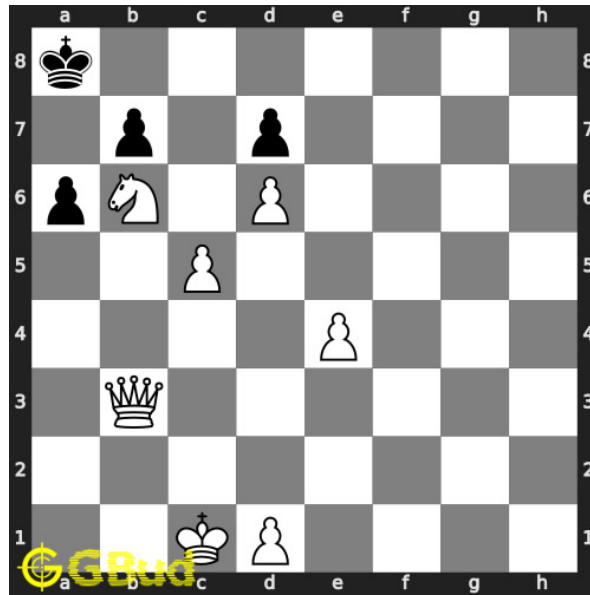


Figure 4: Nb6+ - Beside giving a check, this movement of knight will give support to the queen in the final checkmate move

Move 2 Move by black

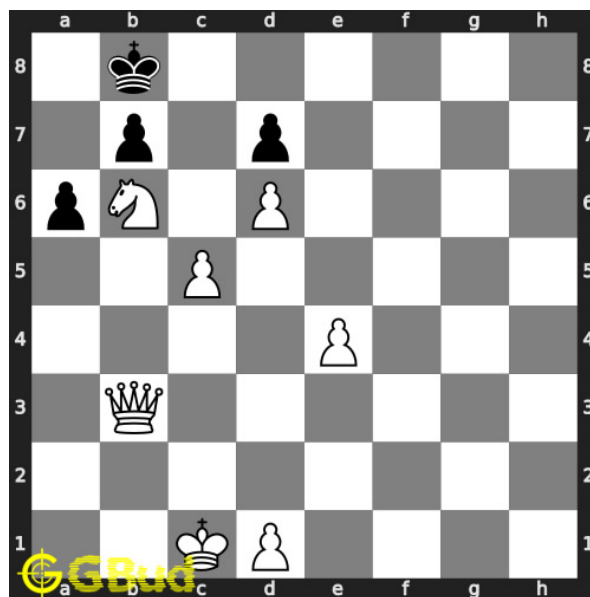


Figure 5: Kb8 - King is trying to escape from the attack

Move 3 Move by white

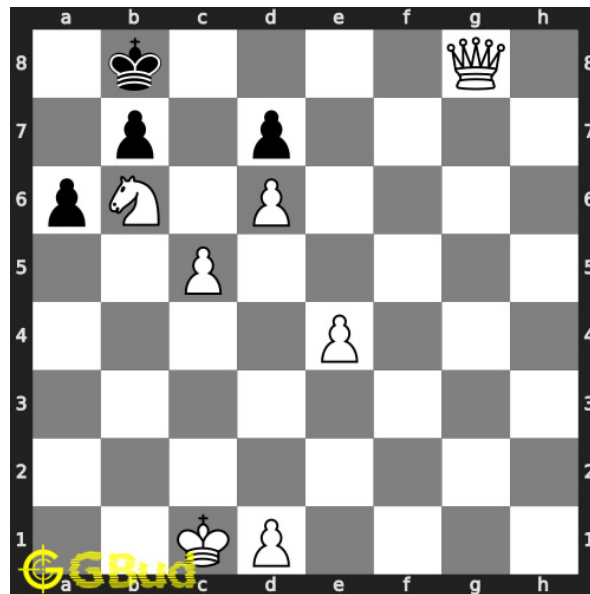


Figure 6: Qg8+ - Queen forces the king to move to seventh rank

Move 4 Move by black

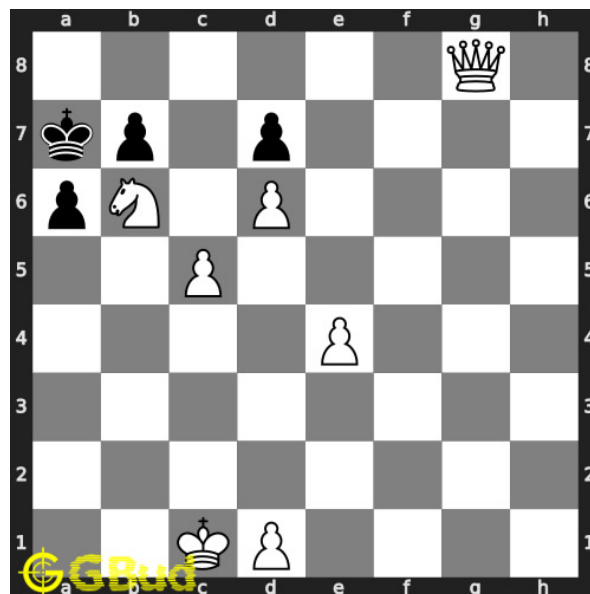


Figure 7: Ka7 -

Move 5 Move by white

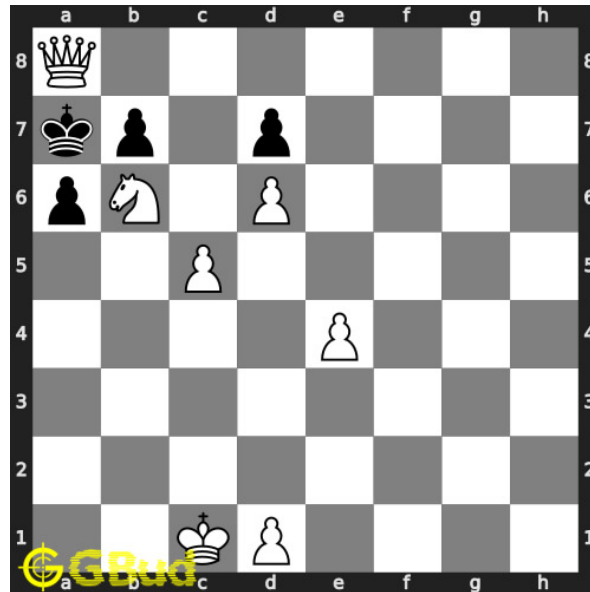


Figure 8: Qa8# - The king has no free squares to move. Hence it is a checkmate

Solution 2

Initial board position This is the initial board position of hard chess puzzle 0037.

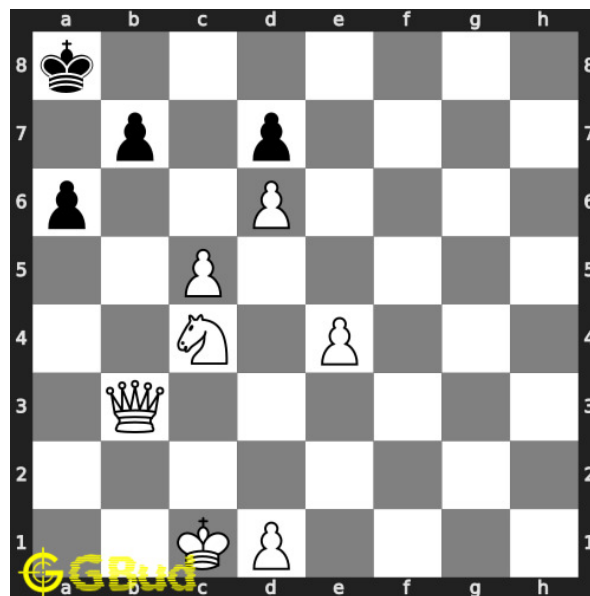


Figure 9: Initial board position of hard chess puzzle 0037

Move 1 Move by white

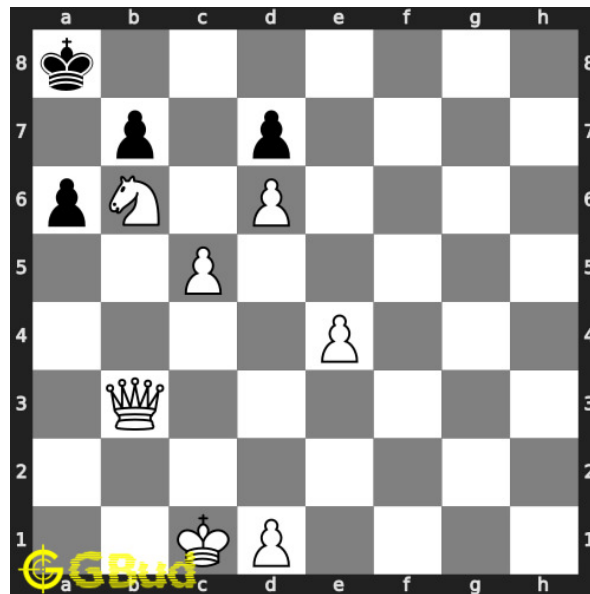


Figure 10: Nb6+ - Beside giving a check, this movement of knight will give support to the queen in the final checkmate move

Move 2 Move by black

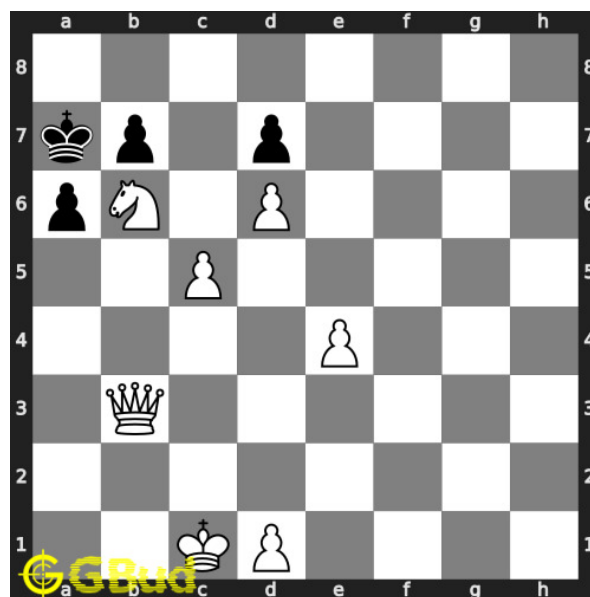


Figure 11: Ka7 -

Move 3 Move by white

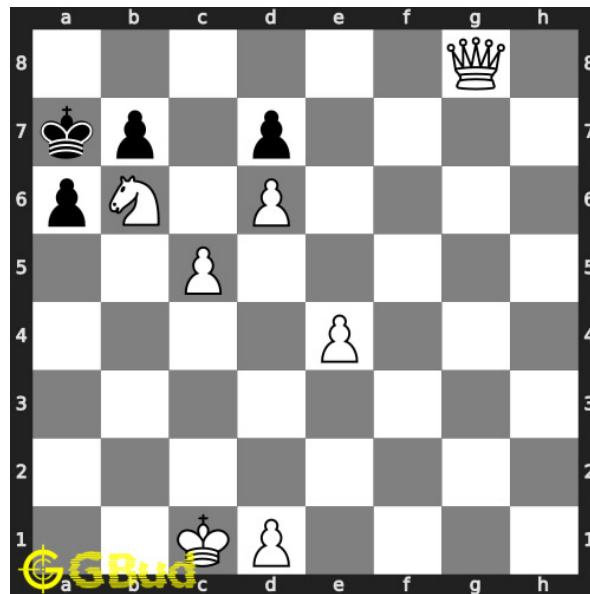


Figure 12: Qg8 - This move is to restrict the movement of opponent's king

Move 4 Move by black

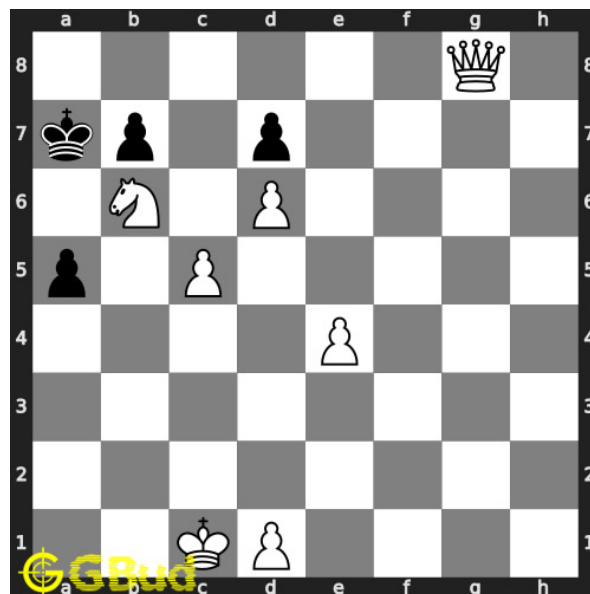


Figure 13: a5 - Since king can not move due to the presence of the queen, one of the pawns is moved

Move 5 Move by white

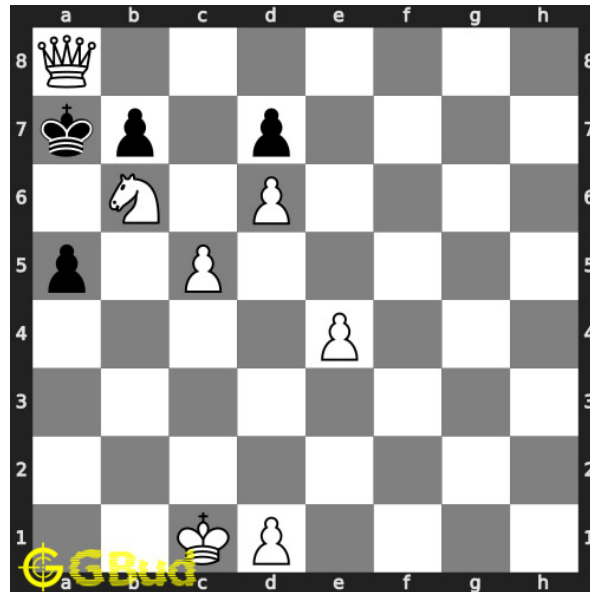


Figure 14: Qa8# - The king has no free squares to move. Hence it is a checkmate

Right moves for the solution to the hard chess puzzle 0037

Based on the objective of the puzzle, you have to make the right moves. Following are the right moves

1. Nb6+, Qg8+, Qa8#
2. Nb6+, Qg8, Qa8#

Explanation for the moves

1. Nb6+ - Beside giving a check, this movement of knight will give support to the queen in the final checkmate move
2. Qg8+ - Queen forces the king to move to seventh rank
3. Qa8# - The king has no free squares to move. Hence it is a checkmate
4. Qg8 - This move is to restrict the movement of opponent's king
5. Kb8 - King is trying to escape from the attack
6. Ka7 -
7. a5 - Since king can not move due to the presence of the queen, one of the pawns is moved
8. For right move - You know how to use knight and the queen to end the game. Keep winning
9. For wrong move - You could have moved your knight and queen and had a checkmate. Do not stop trying

Categories of hard chess puzzle 0037

This hard chess puzzle falls in these categories.

1. [Hard chess puzzles](#)
2. [Mate in 3 puzzles in chess](#)
3. [Endgame puzzles in chess](#)

How to view the solution to hard chess puzzle 0037

To view the [solution to this puzzle](#), follow the steps given below

1. Go to the [puzzle page](#)
2. Click the solution button (Key as shown [below](#)) to view the solution



Figure 15: Click the solution button to view solutions @ <https://gbud.in/gbxtbw3>

How to get help for moves in the hard chess puzzle 0037

To get help or the possible next moves in the puzzle, , follow the steps given below

1. Go to the [puzzle page](#)

2. Click the help button (exclamation mark as shown [below](#)) to get help or suggestion on next possible [move](#)



Figure 16: Click the help button to get help on next move @ <https://gbud.in/gbxtbw3>



Figure 17: Solve more hard puzzles @ <https://gbud.in/chshdpz>



Figure 18: Solve other puzzles @ <https://gbud.in/chsgppz>

Play chess for free



Figure 19: Play chess online for free. Solve puzzles and play with friends

Play chess for free at <https://gbud.in/chs>

We present you a platform to play chess online with friends for free. No need to install any app. You can play chess for free without registration or login.

Simple. You can do several chess related activities.

1. [solve chess puzzles](#)
2. [learn about chess](#)
3. [play chess with computer](#)
4. [play chess with friend](#)
5. [create your own chess games](#)
6. [fen viewer](#)
7. [fen editor](#)
8. [fen generator](#)
9. [pgn viewer](#)
10. [chess board editor](#)

11. [view famous chess games.](#)



Figure 20: Solve this puzzle online by scanning this QR code or go to the link below

<https://gbud.in/gbxtbw3>

Read the latest article on Hard Chess puzzle # 0037 - Mate in 3 moves by scanning this QR code or click the link

Previous article : [« Hard Chess puzzle # 0036 - How will you promote your pawn?](#)

Next article : [Hard chess puzzles »](#)

[Back to top](#)

[Contact Us](#)

© GBud Games 2021