



Hard chess puzzle # 0002

By

G Bud Games
<https://gbud.in>

September 23, 2021

Contents

1	Hard chess puzzle - # 0002 - gain a piece	3
1.1	Hard chess puzzle 0002	4
1.2	Solution to hard chess puzzle 0002	4
1.3	How to view the solution to hard chess puzzle 0002	5
1.4	How to get help for moves in the hard chess puzzle 0002	6
1.5	Play chess for free	7

List of Figures

1.1	Solve this hard chess puzzle 0002. gain a piece @ https://gbud.in/gpr3qz3	4
1.2	Solve this hard chess puzzle online with solution @ https://gbud.in/gpr3qz3	4
1.3	Click the solution button to view solutions @ https://gbud.in/gpr3qz3	5
1.4	Click the help button to get help on next move @ https://gbud.in/gpr3qz3	6
1.5	Solve more hard puzzles @ https://gbud.in/chshdpz	6
1.6	Solve other puzzles @ https://gbud.in/chsgppz	7
1.7	Play chess online for free. Solve puzzles and play with friends	7
1.8	Solve this puzzle online by scanning this QR code or go to the link below	8

Chapter 1

Hard chess puzzle - # 0002 - gain a piece

Solve this hard chess puzzle and improve your chess games through improvement of your chess strategies and chess tactics. This hard puzzle is a subset of [kids games](#).

Puzzle No : 0002

Difficulty level : hard

Description : gain a piece

Next Move : White

Player level : Advanced

Short URL for puzzle : <https://gbud.in/gpr3qz3>

1.1 Hard chess puzzle 0002

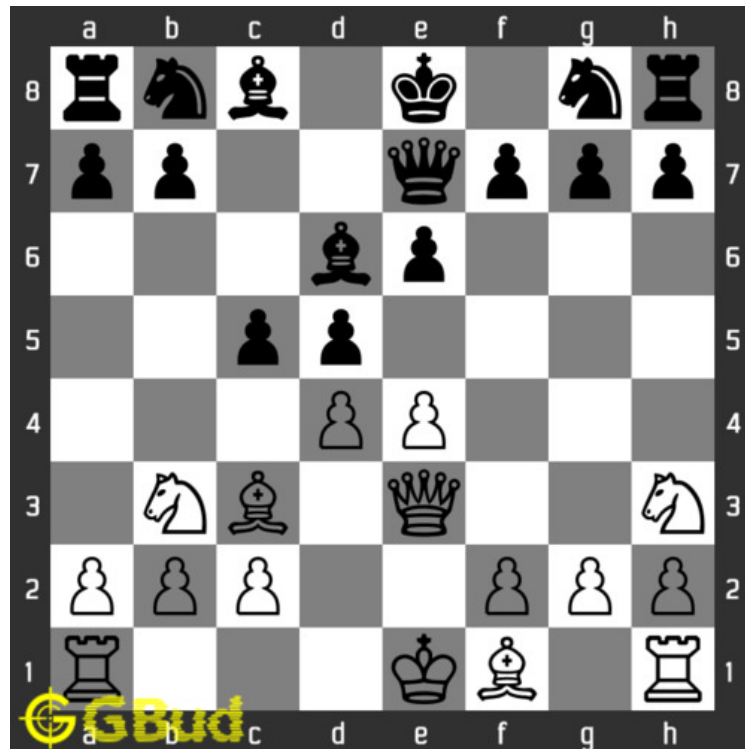


Figure 1.1: Solve this hard chess puzzle 0002. gain a piece @
<https://gbud.in/gpr3qz3>



Figure 1.2: Solve this hard chess puzzle online with solution @
<https://gbud.in/gpr3qz3>

1.2 Solution to hard chess puzzle 0002

At this puzzle, next **move** is by **White**. The objective of the puzzle is to gain a **piece**. Gaining a piece in this puzzle is not direct. If you observe, the **pawn** at **g7** is not supported. The same square is in the line of attack of your **bishop** at **c3**. However, this bishop is blocked by the pawn at **d4**. You need to free this pawn. This pawn can be **moved** by **capturing** the pawn at **c5** and thereby threatening the bishop at **d6**. Your opponent may not capture this pawn since it is supported by your **knight** and **queen**. If they capture, they will be at a loss of piece. since the pawn is moved from

the d file, your bishop's line of attack is clear. Now the bishop can capture the pawn at g7. After this capture, the bishop can attack the rook since it is arrested by its own pieces. You can capture the rook even if they move their knight.

See the solution at the [puzzle page](#)

1.3 How to view the solution to hard chess puzzle 0002

To view the [solution to this puzzle](#), follow the steps given below

1. Go to the [puzzle page](#)
2. Click the solution button (Key as shown [below](#)) to view the solution



Figure 1.3: Click the solution button to view solutions @ <https://gbud.in/gpr3qz3>

1.4 How to get help for moves in the hard chess puzzle 0002

To get help or the possible next moves in the puzzle, , follow the steps given below

1. Go to the [puzzle page](#)
2. Click the help button (exclamation mark as shown [below](#)) to get help or suggestion on next possible [move](#)



Figure 1.4: Click the help button to get help on next move @ <https://gbud.in/gpr3qz3>



Figure 1.5: Solve more hard puzzles @ <https://gbud.in/chshdpz>



Figure 1.6: Solve other puzzles @ <https://gbud.in/chsgppz>

1.5 Play chess for free



Figure 1.7: Play chess online for free. Solve puzzles and play with friends

Play chess for free at <https://gbud.in/chs>

We present you a platform to play chess online with friends for free. No need to install any app. You can play chess for free without registration or login.

Simple. You can do several chess related activities.

1. [solve chess puzzles](#)
2. [learn about chess](#)

3. [play chess with computer](#)
4. [play chess with friend](#)
5. [create your own chess games](#)
6. [fen viewer](#)
7. [fen editor](#)
8. [fen generator](#)
9. [pgn viewer](#)
10. [chess board editor](#)
11. [view famous chess games.](#)



Figure 1.8: Solve this puzzle online by scanning this QR code or go to the link below

<https://gbud.in/gpr3qz3>

Read the latest article on Hard chess puzzle - # 0002 - gain a piece by scanning this QR code or click the link

Previous article : [« Hard chess puzzle - # 0001 - Gain a piece or check mate](#)

Next article : [Hard chess puzzle - # 0003 - mate in 3 moves »](#)

Access the latest version of this article at
<https://gbud.in/blog/game/chess/hard-chess-puzzles/hard-chess-puzzle-0002.html>

[Back to top](#)

[Contact Us](#)

© GBud Games 2021