



## Easy Chess Puzzle # 0101

By

G Bud Games  
<https://gbud.in>

January 10, 2022

## Contents

<b>Easy Chess puzzle # 0101 - Gain opponent's rook</b>	<b>4</b>
Easy chess puzzle 0101 . . . . .	4
Solution to easy chess puzzle 0101 . . . . .	5
Solution 1 . . . . .	5
Solution 2 . . . . .	7
Right moves for the solution to the easy chess puzzle 0101	9
Explanation for the moves . . . . .	9
Categories of easy chess puzzle 0101 . . . . .	10
easy chess puzzle 0101 chart . . . . .	11
How to view the solution to easy chess puzzle 0101 . . . . .	13
How to get help for moves in the easy chess puzzle 0101 . . . . .	14
Play chess for free . . . . .	15

## List of Figures

1	Solve this easy chess puzzle 0101. Gain opponent's rook @ <a href="https://gbud.in/gkmxt81">https://gbud.in/gkmxt81</a> . . . . .	4	
2	Solve this chess puzzle online with solution @ <a href="https://gbud.in/gkmxt81">https://gbud.in/gkmxt81</a>		4
3	Initial board position of easy chess puzzle 0101 . . . . .	5	
4	a1=Q+ . . . . .	6	
5	Kf2 . . . . .	6	
6	Qxh1 . . . . .	7	
7	Initial board position of easy chess puzzle 0101 . . . . .	7	
8	a1=R+ . . . . .	8	
9	Kf2 . . . . .	8	
10	Rxh1 . . . . .	9	
11	easy chess puzzle 101 chart 1 . . . . .	11	
12	easy chess puzzle 101 chart 2 . . . . .	12	
13	easy chess puzzle 101 chart 3 . . . . .	12	
14	easy chess puzzle 101 chart 4 . . . . .	13	
15	Click the solution button to view solutions @ <a href="https://gbud.in/gkmxt81">https://gbud.in/gkmxt81</a> . . . . .	13	
16	Click the help button to get help on next move @ <a href="https://gbud.in/gkmxt81">https://gbud.in/gkmxt81</a> . . . . .	14	
17	Solve more easy puzzles @ <a href="https://gbud.in/chsezpz">https://gbud.in/chsezpz</a> . . . . .	14	
18	Solve other puzzles @ <a href="https://gbud.in/chsgppz">https://gbud.in/chsgppz</a> . . . . .	14	
19	Play chess online for free. Solve puzzles and play with friends	15	

20 Solve this puzzle online by scanning this QR code or go to  
the link below . . . . . 16

## Easy Chess puzzle # 0101 - Gain opponent's rook

Solve this easy chess puzzle and improve your chess games through improvement of your chess strategies and chess tactics.

Puzzle No : 0101

Difficulty level : Easy

Description : Gain opponent's rook

Next Move : Black

Player level : Beginner

Short URL for puzzle : <https://gbud.in/gkmxt81>

### Easy chess puzzle 0101

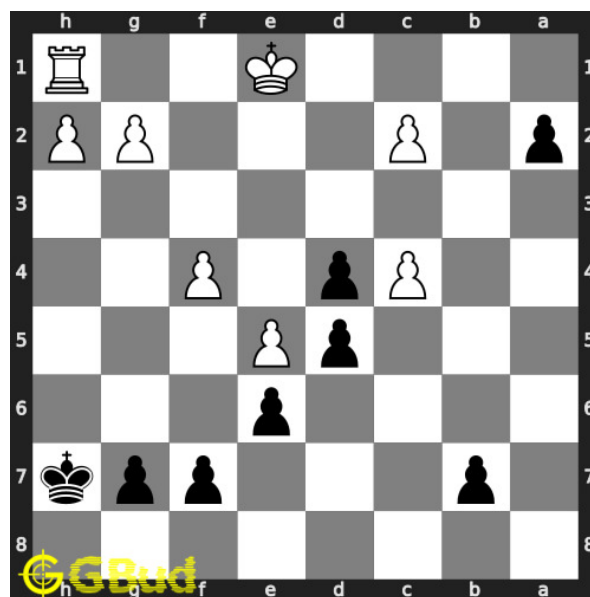


Figure 1: Solve this easy chess puzzle 0101. Gain opponent's rook @ <https://gbud.in/gkmxt81>



Figure 2: Solve this chess puzzle online with solution @ <https://gbud.in/gkmxt81>

Dont forget to check out [chess puzzles](#), [easy chess puzzles](#), [medium chess puzzles](#), [hard chess puzzles](#) and [chess puzzles collections](#) .

## Solution to easy chess puzzle 0101

At this puzzle, next [move](#) is by [Black](#). The objective of the puzzle is to gain opponent's rook.

See the interactive solution at the [puzzle page](#)

### Solution 1

**Initial board position** This is the initial board position of easy chess puzzle 0101.

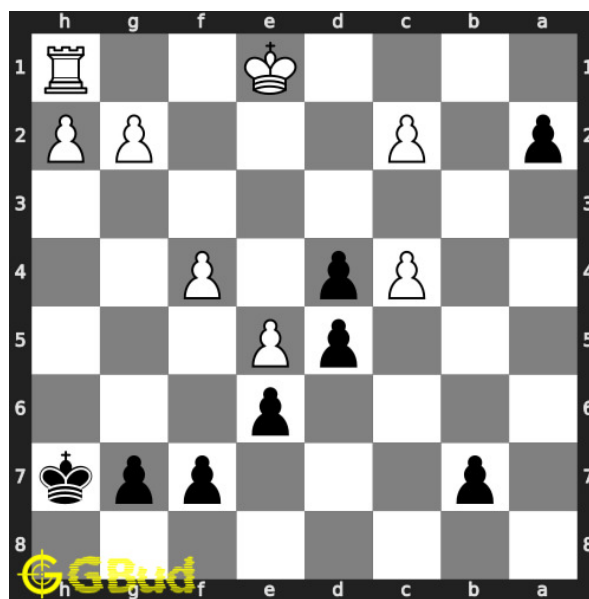


Figure 3: Initial board position of easy chess puzzle 0101

**Move 1** Move by black

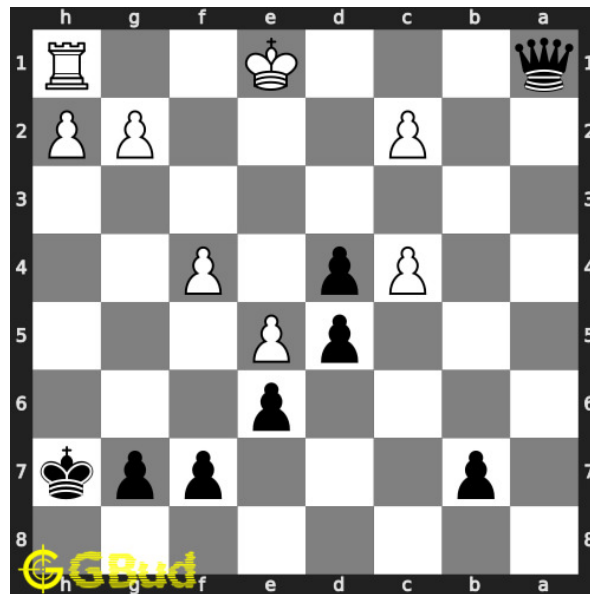


Figure 4: a1=Q+

**pawn** in a **file** is promoted to a **queen** and gives **check** to opponent. by the **check** the **queen** is also having an x-ray attack on opponent's **rook**

**Move 2** Move by white

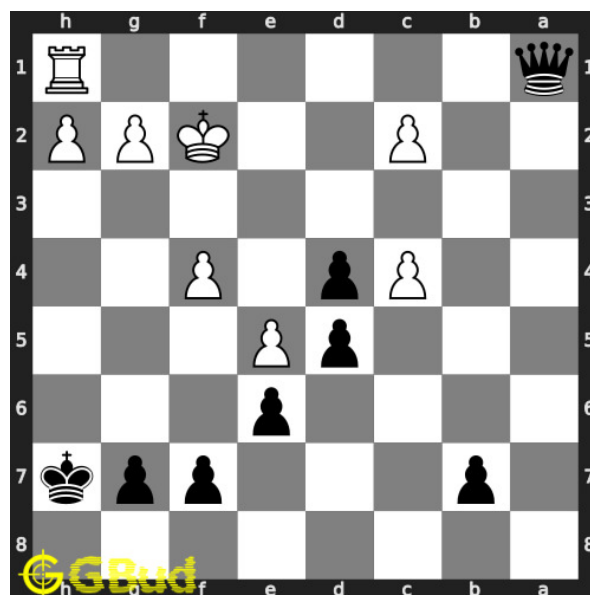


Figure 5: Kf2

opponent's **king** escapes from the **check** threat by moving to f2.

**Move 3** Move by black

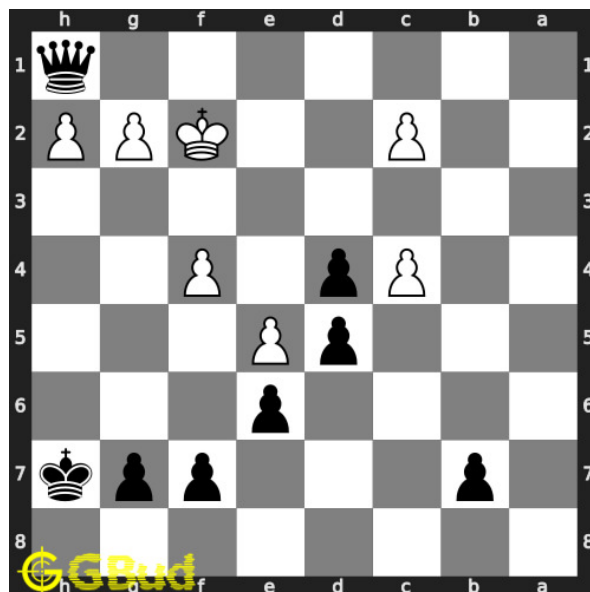


Figure 6: Qxh1

your **queen captures** opponents hanging **rook** through a skewer attack. this is how you can gain opponent's **rook**.

## Solution 2

**Initial board position** This is the initial board position of easy chess puzzle 0101.

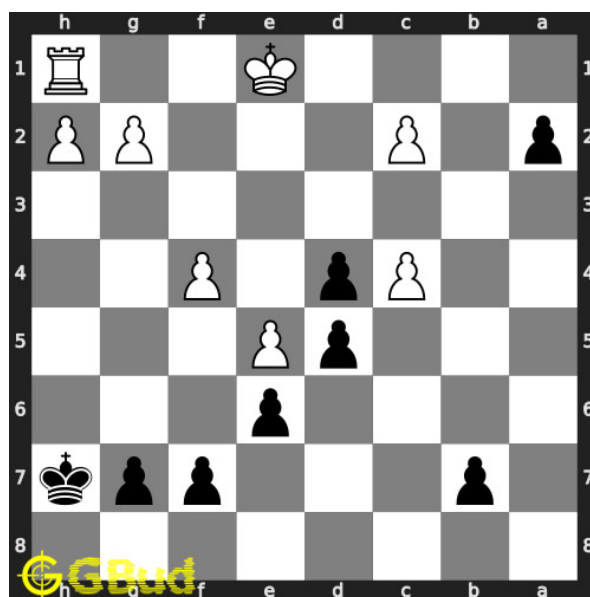


Figure 7: Initial board position of easy chess puzzle 0101

### Move 1 Move by black

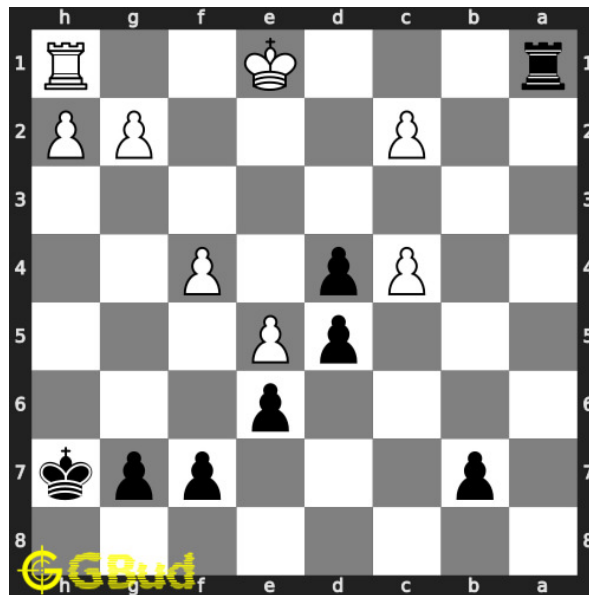


Figure 8: a1=R+

pawn in a file is promoted to a rook and gives check to opponent. by the check the rook is also having an x-ray attack on opponent's rook

### Move 2 Move by white

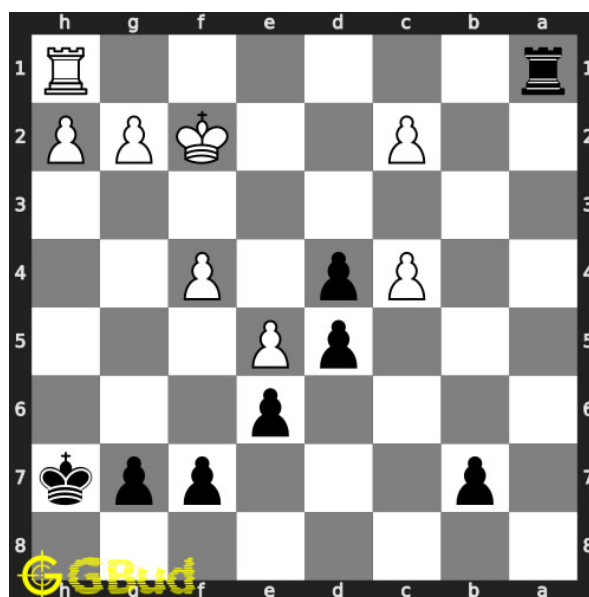


Figure 9: Kf2

opponent's king escapes from the check threat by moving to f2.



### Move 3 Move by black

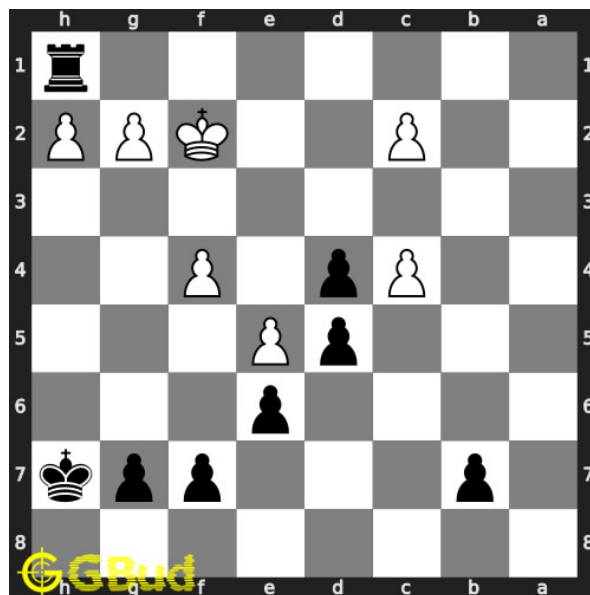


Figure 10: R<sub>x</sub>h1

your **rook captures** opponents hanging **rook** through a skewer attack. this is how you can gain opponent's **rook**.

### Right moves for the solution to the easy chess puzzle 0101

Based on the objective of the puzzle, you have to make the right moves. Following are the right moves

1. a1=Q+, Q<sub>x</sub>h1
2. a1=R+, R<sub>x</sub>h1

### Explanation for the moves

1. a1=Q+ - Pawn in a file is promoted to a queen and gives check to opponent. By the check the queen is also having an x-ray attack on opponent's rook
2. a1=R+ - Pawn in a file is promoted to a rook and gives check to opponent. By the check the rook is also having an x-ray attack on opponent's rook
3. Kf2 - Opponent's king escapes from the check threat by moving to f2.
4. Q<sub>x</sub>h1 - Your queen captures opponents hanging rook through a skewer attack. This is how you can gain opponent's rook.

5. Rxh1 - Your rook captures opponents hanging rook through a skewer attack. This is how you can gain opponent's rook.
6. For right move - You have gained the opponent's rook through a right skewer attack. You made the right choice
7. For wrong move - You could have promoted the pawn and give the check which would gain the rook

## Categories of easy chess puzzle 0101

This easy chess puzzle falls in these categories.

1. [Easy chess puzzles](#)
2. [Gain puzzles in chess](#)
3. [Promotion puzzles in chess](#)
4. [Strategy puzzles in chess](#)
5. [Skewer puzzles in chess](#)
6. [Pawn puzzles in chess](#)

## easy chess puzzle 0101 chart



Figure 11: easy chess puzzle 101 chart 1



Figure 12: easy chess puzzle 101 chart 2



Figure 13: easy chess puzzle 101 chart 3



Figure 14: easy chess puzzle 101 chart 4

## How to view the solution to easy chess puzzle 0101

To view the [solution to this puzzle](#), follow the steps given below

1. Go to the [puzzle page](#)
2. Click the solution button (Key as shown [below](#)) to view the solution

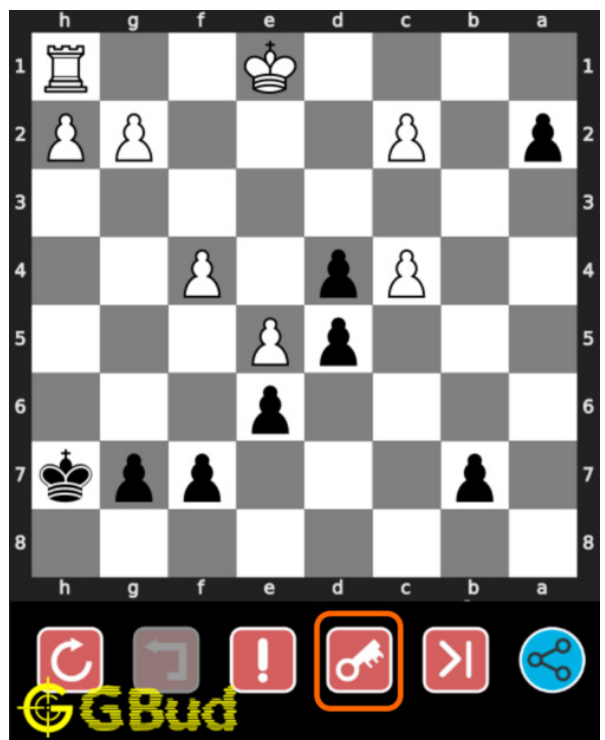


Figure 15: Click the solution button to view solutions @ <https://gbud.in/gkmxt81>

## How to get help for moves in the easy chess puzzle 0101

To get help or the possible next moves in the puzzle, , follow the steps given below

1. Go to the [puzzle page](#)
2. Click the help button (exclamation mark as shown [below](#)) to get help or suggestion on next possible [move](#)



Figure 16: Click the help button to get help on next move @ <https://gbud.in/gkmxt81>



Figure 17: Solve more easy puzzles @ <https://gbud.in/chsezpz>



Figure 18: Solve other puzzles @ <https://gbud.in/chsgppz>

## Play chess for free

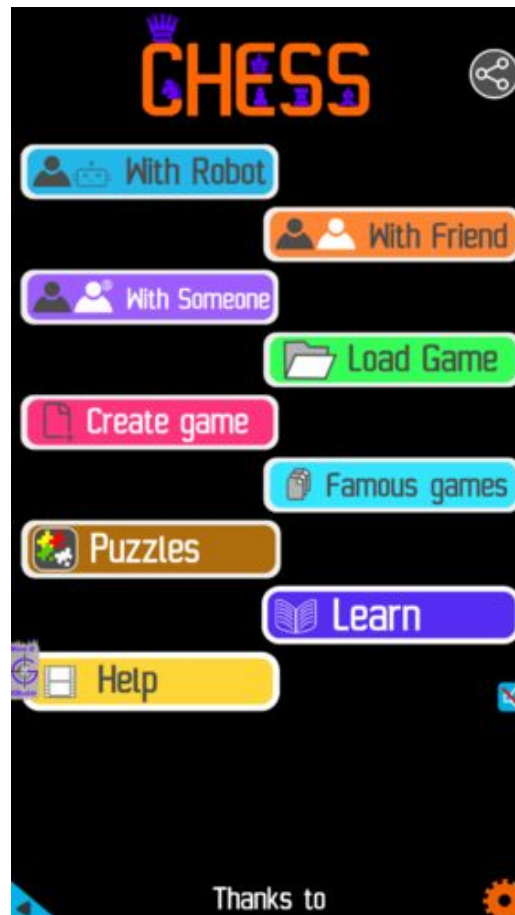


Figure 19: Play chess online for free. Solve puzzles and play with friends

Play chess for free at <https://gbud.in/chs>

We present you a platform to play chess online with friends for free. No need to install any app. You can play chess for free without registration or login.

Simple. You can do several chess related activities.

1. solve chess puzzles
2. learn about chess
3. play chess with computer
4. play chess with friend
5. create your own chess games

6. [fen viewer](#)
7. [fen editor](#)
8. [fen generator](#)
9. [pgn viewer](#)
10. [chess board editor](#)
11. [view famous chess games.](#)



Figure 20: Solve this puzzle online by scanning this QR code or go to the link below

<https://gbud.in/gkmxt81>

Read the latest article on Easy Chess puzzle # 0101 - Gain opponent's rook by scanning this QR code or click the link

Previous article : « [Easy Chess puzzle # 0100 - Mate in 1 move](#)

Next article : [Easy chess puzzles](#) »

[Back to top](#)

[Contact Us](#)