



## Easy Chess Puzzle # 0076

By

G Bud Games  
<https://gbud.in>

November 19, 2021

## Contents

<b>Easy Chess puzzle # 0076 - Mate in 2 moves</b>	<b>3</b>
Easy chess puzzle 0076 . . . . .	3
Solution to easy chess puzzle 0076 . . . . .	4
Solution 1 . . . . .	4
Right moves for the solution to the easy chess puzzle 0076	6
Explanation for the moves . . . . .	6
Categories of easy chess puzzle 0076 . . . . .	7
How to view the solution to easy chess puzzle 0076 . . . . .	7
How to get help for moves in the easy chess puzzle 0076 . . . . .	8
Play chess for free . . . . .	9

## List of Figures

1	Solve this easy chess puzzle 0076. Mate in 2 moves @ <a href="https://gbud.in/gg2tkn1">https://gbud.in/gg2tkn1</a> . . . . .	3
2	Solve this chess puzzle online with solution @ <a href="https://gbud.in/gg2tkn1">https://gbud.in/gg2tkn1</a>	3
3	Initial board position of easy chess puzzle 0076 . . . . .	4
4	Rd8+ - You can have a mate from d8. But d8 is guarded by the opponent's queen. Your rook sacrifices itself for a checkmate in next move. With this move, your rook forks opponent's king and queen . . . . .	5
5	Qxd8 - Opponent's king can not capture your rook because it is in battery formation with another rook. So opponent's queen captures Your rook . . . . .	5
6	Rxd8# - Your next rook moves to d8 and checkmate. Opponent's king can not capture your rook since it is supported by the bishop. This is called opera mate. This is how you can mate in 2 moves . . . . .	6
7	Click the solution button to view solutions @ <a href="https://gbud.in/gg2tkn1">https://gbud.in/gg2tkn1</a> . . . . .	7
8	Click the help button to get help on next move @ <a href="https://gbud.in/gg2tkn1">https://gbud.in/gg2tkn1</a> . . . . .	8
9	Solve more easy puzzles @ <a href="https://gbud.in/chsezpz">https://gbud.in/chsezpz</a> . . . . .	8
10	Solve other puzzles @ <a href="https://gbud.in/chsgppz">https://gbud.in/chsgppz</a> . . . . .	8
11	Play chess online for free. Solve puzzles and play with friends	9
12	Solve this puzzle online by scanning this QR code or go to the link below . . . . .	10

## Easy Chess puzzle # 0076 - Mate in 2 moves

Solve this easy chess puzzle and improve your chess games through improvement of your chess strategies and chess tactics.

Puzzle No : 0076

Difficulty level : Easy

Description : Mate in 2 moves

Next Move : White

Player level : Beginner

Short URL for puzzle : <https://gbud.in/gg2tkn1>

### Easy chess puzzle 0076

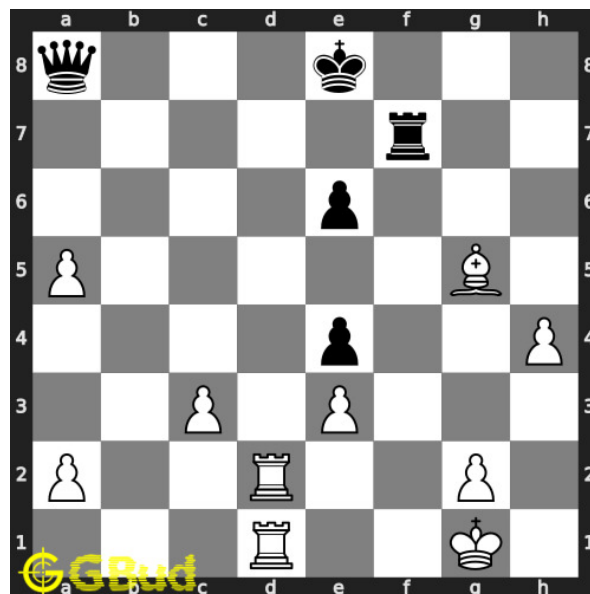


Figure 1: Solve this easy chess puzzle 0076. Mate in 2 moves @ <https://gbud.in/gg2tkn1>



Figure 2: Solve this chess puzzle online with solution @ <https://gbud.in/gg2tkn1>

## Solution to easy chess puzzle 0076

At this puzzle, next **move** is by **White**. The objective of the puzzle is to mate in 2 moves.

See the interactive solution at the [puzzle page](#)

### Solution 1

**Initial board position** This is the initial board position of easy chess puzzle 0076.

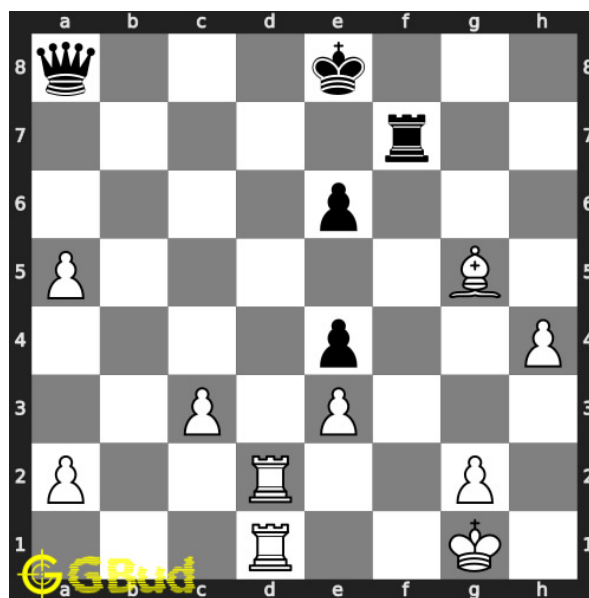


Figure 3: Initial board position of easy chess puzzle 0076

**Move 1** Move by white

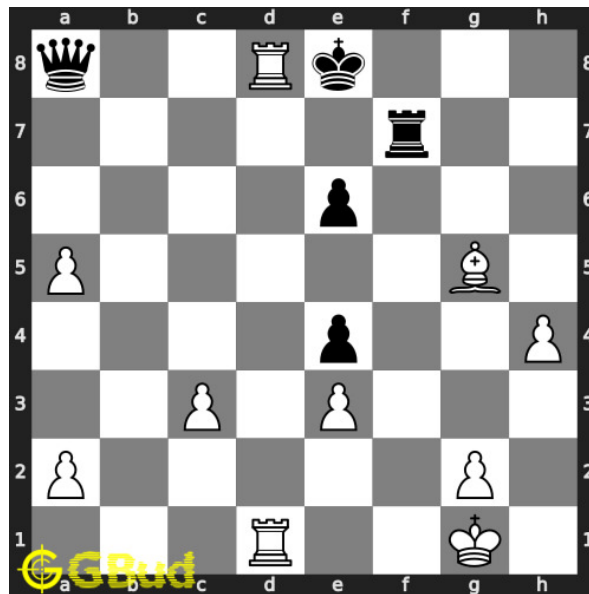


Figure 4: Rd8+ - You can have a mate from d8. But d8 is guarded by the opponent's queen. Your rook sacrifices itself for a checkmate in next move. With this move, your rook forks opponent's king and queen

**Move 2** Move by black

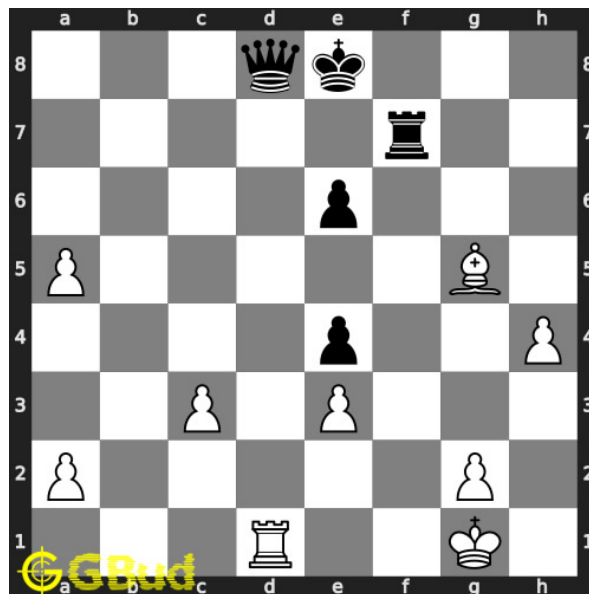


Figure 5: Qxd8 - Opponent's king can not capture your rook because it is in battery formation with another rook. So opponent's queen captures Your rook

**Move 3** Move by white

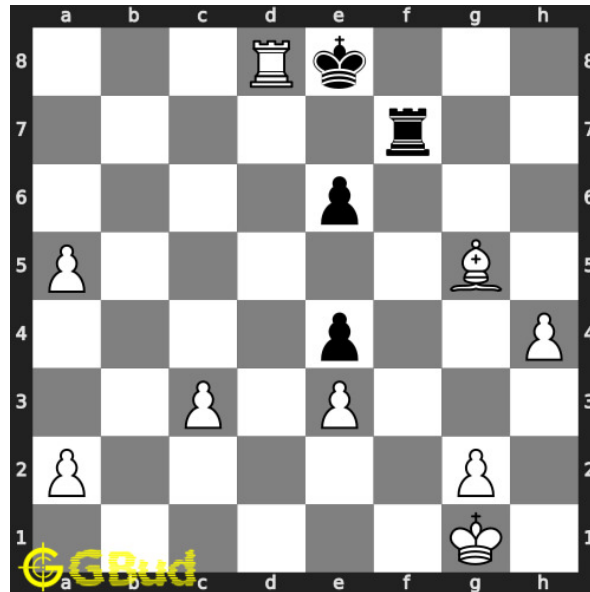


Figure 6: Rxd8# - Your next rook moves to d8 and checkmate. Opponent's king can not capture your rook since it is supported by the bishop. This is called opera mate. This is how you can mate in 2 moves

### Right moves for the solution to the easy chess puzzle 0076

Based on the objective of the puzzle, you have to make the right moves. Following are the right moves

1. Rd8+, Rxd8#

### Explanation for the moves

1. Rd8+ - You can have a mate from d8. But d8 is guarded by the opponent's queen. Your rook sacrifices itself for a checkmate in next move. With this move, your rook forks opponent's king and queen
2. Qxd8 - Opponent's king can not capture your rook because it is in battery formation with another rook. So opponent's queen captures Your rook
3. Rxd8# - Your next rook moves to d8 and checkmate. Opponent's king can not capture your rook since it is supported by the bishop. This is called opera mate. This is how you can mate in 2 moves
4. For right move - You have successfully had a opera mate after a sacrifice. Keep it up.
5. For wrong move - You could have sacrificed one of your rooks to have a opera mate. Do not stop trying

## Categories of easy chess puzzle 0076

This easy chess puzzle falls in these categories.

1. [Easy chess puzzles](#)
2. [Sacrifice puzzles in chess](#)
3. [Mate in 2 puzzles in chess](#)
4. [Endgame puzzles in chess](#)
5. [Fork puzzles in chess](#)
6. [Strategy puzzles in chess](#)
7. [Mate pattern puzzles in chess](#)
8. [Rook puzzles in chess](#)

## How to view the solution to easy chess puzzle 0076

To view the [solution to this puzzle](#), follow the steps given below

1. Go to the [puzzle page](#)
2. Click the solution button (Key as shown [below](#)) to view the solution



Figure 7: Click the solution button to view solutions @ <https://gbud.in/gg2tkn1>

## How to get help for moves in the easy chess puzzle 0076

To get help or the possible next moves in the puzzle, , follow the steps given below

1. Go to the [puzzle page](#)
2. Click the help button (exclamation mark as shown [below](#)) to get help or suggestion on next possible [move](#)



Figure 8: Click the help button to get help on next move @ <https://gbud.in/gg2tkn1>



Figure 9: Solve more easy puzzles @ <https://gbud.in/chsezpz>



Figure 10: Solve other puzzles @ <https://gbud.in/chsgppz>



## Play chess for free



Figure 11: Play chess online for free. Solve puzzles and play with friends

Play chess for free at <https://gbud.in/chs>

We present you a platform to play chess online with friends for free. No need to install any app. You can play chess for free without registration or login.

Simple. You can do several chess related activities.

1. [solve chess puzzles](#)
2. [learn about chess](#)
3. [play chess with computer](#)
4. [play chess with friend](#)
5. [create your own chess games](#)

6. [fen viewer](#)
7. [fen editor](#)
8. [fen generator](#)
9. [pgn viewer](#)
10. [chess board editor](#)
11. [view famous chess games.](#)



Figure 12: Solve this puzzle online by scanning this QR code or go to the link below

<https://gbud.in/gg2tkn1>

Read the latest article on Easy Chess puzzle # 0076 - Mate in 2 moves by scanning this QR code or click the link

Previous article : [« Easy Chess puzzle # 0075 - Fork and capture opponent's queen](#)

Next article : [Easy chess puzzles »](#)

[Back to top](#)

[Contact Us](#)