



Easy Chess Puzzle # 0073

By

G Bud Games
<https://gbud.in>

November 16, 2021

Contents

Easy Chess puzzle # 0073 - Mate in 1 move	3
Easy chess puzzle 0073	3
Solution to easy chess puzzle 0073	4
Solution 1	4
Right moves for the solution to the easy chess puzzle 0073	5
Explanation for the moves	6
Categories of easy chess puzzle 0073	6
How to view the solution to easy chess puzzle 0073	6
How to get help for moves in the easy chess puzzle 0073	7
Play chess for free	9

List of Figures

1	Solve this easy chess puzzle 0073. Mate in 1 move @ https://gbud.in/g3vqv81	3
2	Solve this chess puzzle online with solution @ https://gbud.in/g3vqv81	3
3	Initial board position of easy chess puzzle 0073	4
4	c6 - Opponent's pawn is moving forward to threaten your knight. If your knight responds, your bishop which is supported by the knight will be captured.	5
5	Bf5# - Your bishop moves to f5 and checkmate. King has no free squares to move. This is called Legal mate	5
6	Click the solution button to view solutions @ https://gbud.in/g3vqv81	7
7	Click the help button to get help on next move @ https://gbud.in/g3vqv81	8
8	Solve more easy puzzles @ https://gbud.in/chsezpz	8
9	Solve other puzzles @ https://gbud.in/chsgppz	8
10	Play chess online for free. Solve puzzles and play with friends	9
11	Solve this puzzle online by scanning this QR code or go to the link below	10

Easy Chess puzzle # 0073 - Mate in 1 move

Solve this easy chess puzzle and improve your chess games through improvement of your chess strategies and chess tactics.

Puzzle No : 0073

Difficulty level : Easy

Description : Mate in 1 move

Next Move : White

Player level : Beginner

Short URL for puzzle : <https://gbud.in/g3vqv81>

Easy chess puzzle 0073

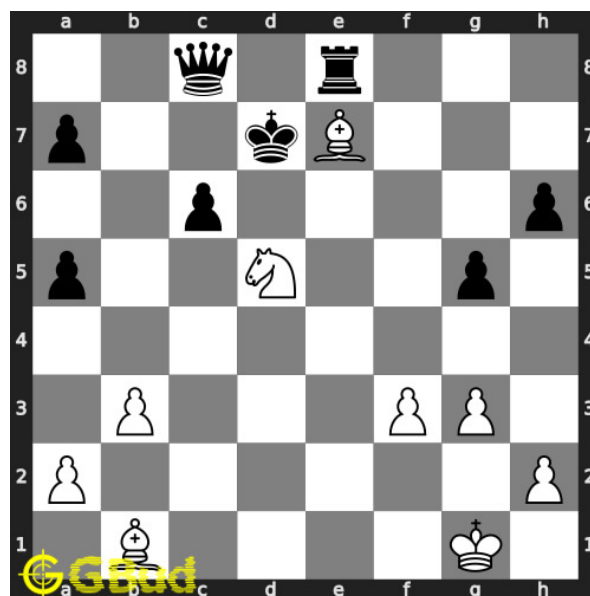


Figure 1: Solve this easy chess puzzle 0073. Mate in 1 move @ <https://gbud.in/g3vqv81>



Figure 2: Solve this chess puzzle online with solution @ <https://gbud.in/g3vqv81>

Solution to easy chess puzzle 0073

At this puzzle, next **move** is by **White**. The objective of the puzzle is to mate in 1 move.

See the interactive solution at the [puzzle page](#)

Solution 1

Initial board position This is the initial board position of easy chess puzzle 0073.

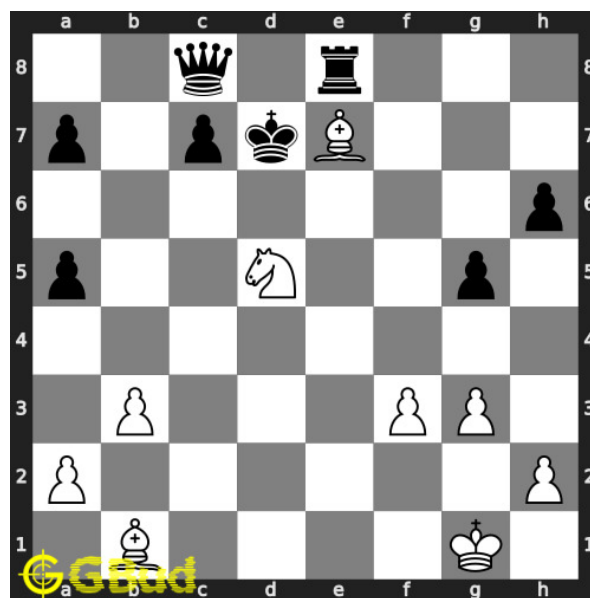


Figure 3: Initial board position of easy chess puzzle 0073

Move 1 Move by black

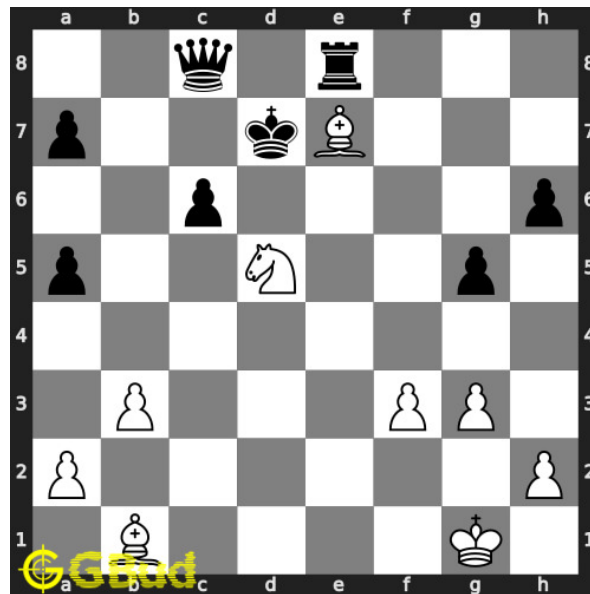


Figure 4: c6 - Opponent's pawn is moving forward to threaten your knight. If your knight responds, your bishop which is supported by the knight will be captured.

Move 2 Move by white

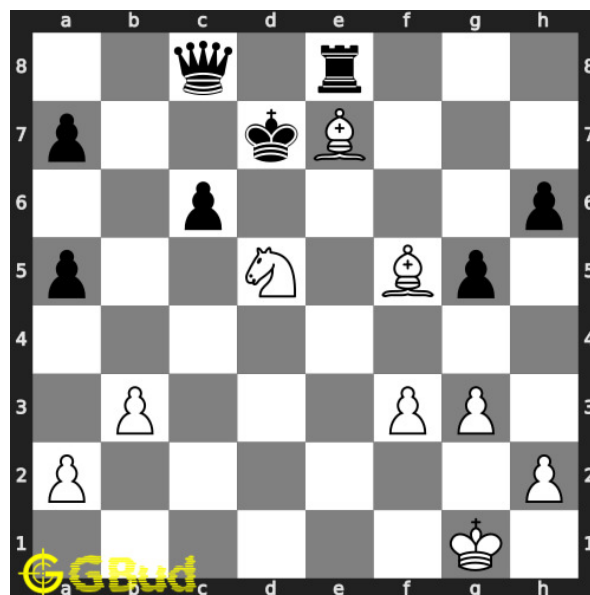


Figure 5: Bf5# - Your bishop moves to f5 and checkmate. King has no free squares to move. This is called Legal mate

Right moves for the solution to the easy chess puzzle 0073

Based on the objective of the puzzle, you have to make the right moves. Following are the right moves

1. Bf5#

Explanation for the moves

1. c6 - Opponent's pawn is moving forward to threaten your knight. If your knight responds, your bishop which is supported by the knight will be captured.
2. Bf5# - Your bishop moves to f5 and checkmate. King has no free squares to move. This is called Legal mate
3. For right move - Your bishop's move was excellent. With this you have had a Legal mate. Keep up the good work
4. For wrong move - You could have had a legal mate by moving your bishop. Try again

Categories of easy chess puzzle 0073

This easy chess puzzle falls in these categories.

1. [Easy chess puzzles](#)
2. [Mate in 1 puzzles in chess](#)
3. [Endgame puzzles in chess](#)
4. [Mate pattern puzzles in chess](#)
5. [Bishop puzzles in chess](#)

How to view the solution to easy chess puzzle 0073

To view the [solution to this puzzle](#), follow the steps given below

1. Go to the [puzzle page](#)
2. Click the solution button (Key as shown [below](#)) to view the solution



Figure 6: Click the solution button to view solutions @ <https://gbud.in/g3vqv81>

How to get help for moves in the easy chess puzzle 0073

To get help or the possible next moves in the puzzle, , follow the steps given below

1. Go to the [puzzle page](#)
2. Click the help button (exclamation mark as shown [below](#)) to get help or suggestion on next possible [move](#)



Figure 7: Click the help button to get help on next move @ <https://gbud.in/g3vqv81>



Figure 8: Solve more easy puzzles @ <https://gbud.in/chsezpz>



Figure 9: Solve other puzzles @ <https://gbud.in/chsgppz>

Play chess for free

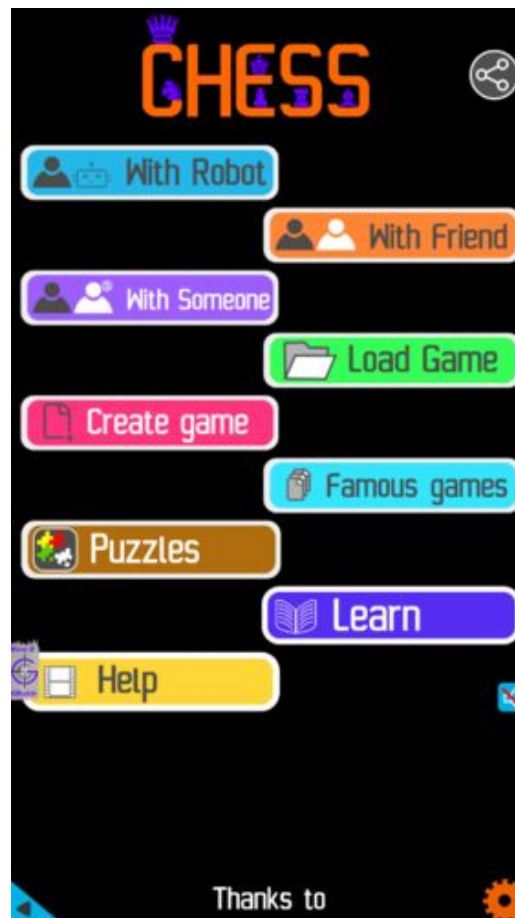


Figure 10: Play chess online for free. Solve puzzles and play with friends

Play chess for free at <https://gbud.in/chs>

We present you a platform to play chess online with friends for free. No need to install any app. You can play chess for free without registration or login.

Simple. You can do several chess related activities.

1. [solve chess puzzles](#)
2. [learn about chess](#)
3. [play chess with computer](#)
4. [play chess with friend](#)
5. [create your own chess games](#)
6. [fen viewer](#)
7. [fen editor](#)
8. [fen generator](#)
9. [pgn viewer](#)
10. [chess board editor](#)

11. [view famous chess games.](#)



Figure 11: Solve this puzzle online by scanning this QR code or go to the link below

<https://gbud.in/g3vqv81>

Read the latest article on Easy Chess puzzle # 0073 - Mate in 1 move by scanning this QR code or click the link

Previous article : « [Easy Chess puzzle # 0072 - Mate in 1 move](#)

Next article : [Easy chess puzzles](#) »

[Back to top](#)

[Contact Us](#)

© GBud Games 2021