



Easy Chess Puzzle # 0070

By

G Bud Games
<https://gbud.in>

November 11, 2021

Contents

Easy Chess puzzle # 0070 - Mate in 1 move	3
Easy chess puzzle 0070	3
Solution to easy chess puzzle 0070	4
Solution 1	4
Right moves for the solution to the easy chess puzzle 0070	5
Explanation for the moves	5
Categories of easy chess puzzle 0070	5
How to view the solution to easy chess puzzle 0070	6
How to get help for moves in the easy chess puzzle 0070	6
Play chess for free	8

List of Figures

1	Solve this easy chess puzzle 0070. Mate in 1 move @ https://gbud.in/g35s6c1	3
2	Solve this chess puzzle online with solution @ https://gbud.in/g35s6c1	3
3	Initial board position of easy chess puzzle 0070	4
4	Rd8# - Rook moves to d8 and checkmate. Opponent's king can not capture the rook as it is supported by the knight. Opponent's king can not move to other squares due to the attack from your pawn and knight. This is called Hook mate. This is how you can mate in 1 move	5
5	Click the solution button to view solutions @ https://gbud.in/g35s6c1	6
6	Click the help button to get help on next move @ https://gbud.in/g35s6c1	7
7	Solve more easy puzzles @ https://gbud.in/chsezpz	7
8	Solve other puzzles @ https://gbud.in/chsgppz	7
9	Play chess online for free. Solve puzzles and play with friends	8
10	Solve this puzzle online by scanning this QR code or go to the link below	9

Easy Chess puzzle # 0070 - Mate in 1 move

Solve this easy chess puzzle and improve your chess games through improvement of your chess strategies and chess tactics.

Puzzle No : 0070

Difficulty level : Easy

Description : Mate in 1 move

Next Move : White

Player level : Beginner

Short URL for puzzle : <https://gbud.in/g35s6c1>

Easy chess puzzle 0070

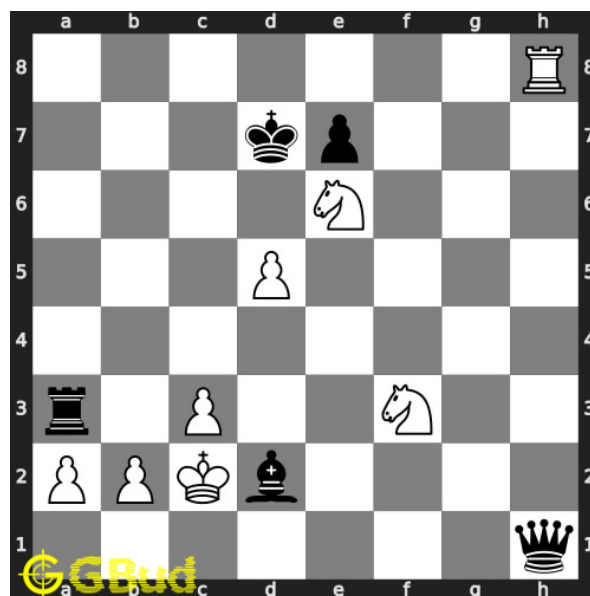


Figure 1: Solve this easy chess puzzle 0070. Mate in 1 move @ <https://gbud.in/g35s6c1>



Figure 2: Solve this chess puzzle online with solution @ <https://gbud.in/g35s6c1>

Solution to easy chess puzzle 0070

At this puzzle, next **move** is by **White**. The objective of the puzzle is to mate in 1 move.

See the interactive solution at the [puzzle page](#)

Solution 1

Initial board position This is the initial board position of easy chess puzzle 0070.

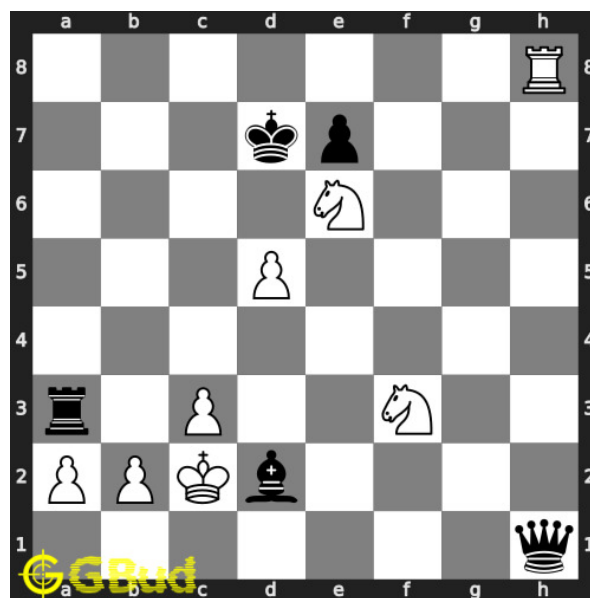


Figure 3: Initial board position of easy chess puzzle 0070

Move 1 Move by white

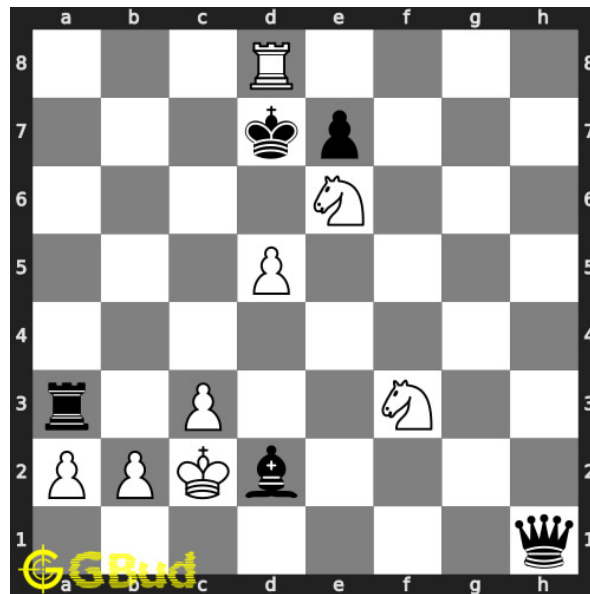


Figure 4: Rd8# - Rook moves to d8 and checkmate. Opponent's king can not capture the rook as it is supported by the knight. Opponent's king can not move to other squares due to the attack from your pawn and knight. This is called Hook mate. This is how you can mate in 1 move

Right moves for the solution to the easy chess puzzle 0070

Based on the objective of the puzzle, you have to make the right moves. Following are the right moves

1. Rd8#

Explanation for the moves

1. Rd8# - Rook moves to d8 and checkmate. Opponent's king can not capture the rook as it is supported by the knight. Opponent's king can not move to other squares due to the attack from your pawn and knight. This is called Hook mate. This is how you can mate in 1 move
2. For right move - You have had a hook mate successfully. Keep up the good work
3. For wrong move - You missed to have a hook mate by moving your rook to d8. Try again

Categories of easy chess puzzle 0070

This easy chess puzzle falls in these categories.

1. [Easy chess puzzles](#)
2. [Mate in 1 puzzles in chess](#)
3. [Endgame puzzles in chess](#)
4. [Strategy puzzles in chess](#)
5. [Mate pattern puzzles in chess](#)
6. [Rook puzzles in chess](#)

How to view the solution to easy chess puzzle 0070

To view the [solution to this puzzle](#), follow the steps given below

1. Go to the [puzzle page](#)
2. Click the solution button (Key as shown [below](#)) to view the solution

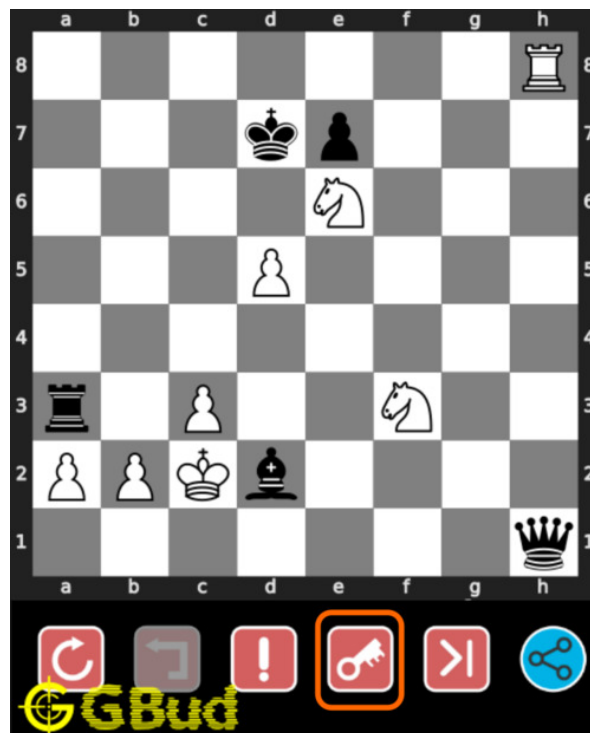


Figure 5: Click the solution button to view solutions @ <https://gbud.in/g35s6c1>

How to get help for moves in the easy chess puzzle 0070

To get help or the possible next moves in the puzzle, , follow the steps given below

1. Go to the [puzzle page](#)

2. Click the help button (exclamation mark as shown [below](#)) to get help or suggestion on next possible [move](#)

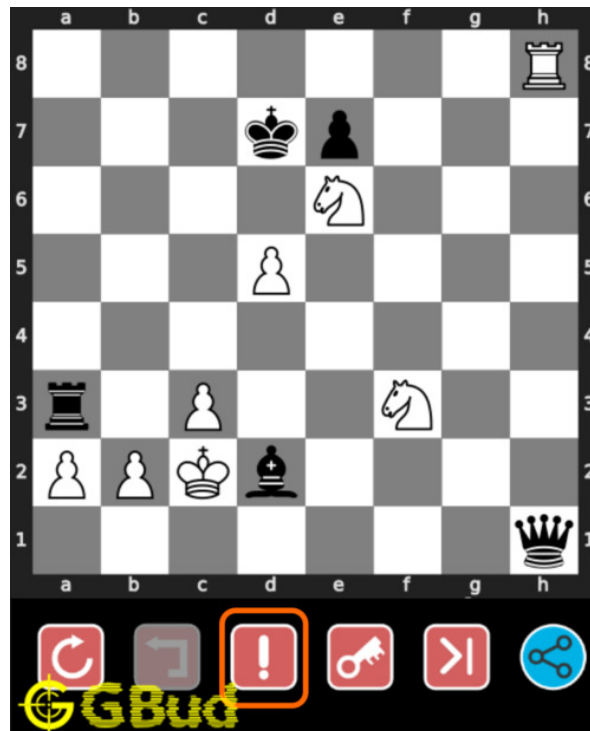


Figure 6: Click the help button to get help on next move @ <https://gbud.in/g35s6c1>



Figure 7: Solve more easy puzzles @ <https://gbud.in/chsezpz>



Figure 8: Solve other puzzles @ <https://gbud.in/chsgppz>

Play chess for free

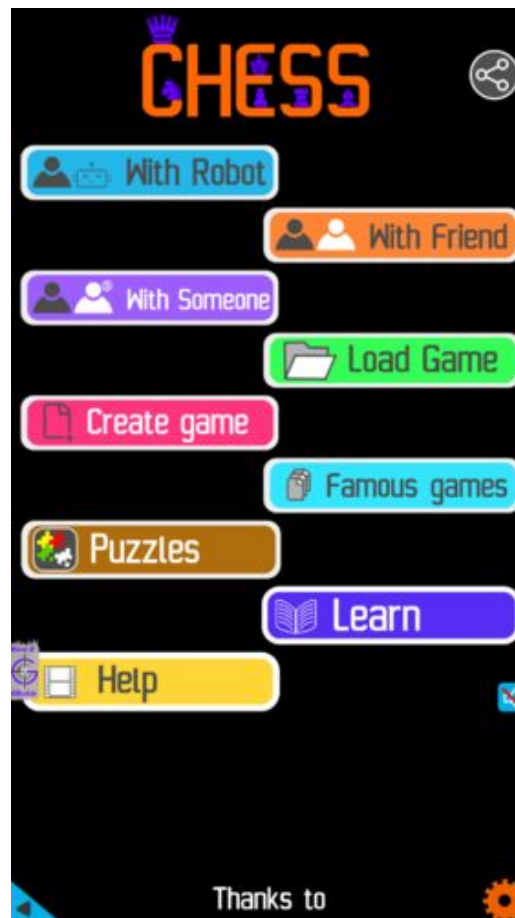


Figure 9: Play chess online for free. Solve puzzles and play with friends

Play chess for free at <https://gbud.in/chs>

We present you a platform to play chess online with friends for free. No need to install any app. You can play chess for free without registration or login.

Simple. You can do several chess related activities.

1. [solve chess puzzles](#)
2. [learn about chess](#)
3. [play chess with computer](#)
4. [play chess with friend](#)
5. [create your own chess games](#)
6. [fen viewer](#)
7. [fen editor](#)
8. [fen generator](#)
9. [pgn viewer](#)
10. [chess board editor](#)

11. [view famous chess games.](#)



Figure 10: Solve this puzzle online by scanning this QR code or go to the link below

<https://gbud.in/g35s6c1>

Read the latest article on Easy Chess puzzle # 0070 - Mate in 1 move by scanning this QR code or click the link

Previous article : « [Easy Chess puzzle # 0069 - Mate in 1 move](#)

Next article : [Easy chess puzzles](#) »

[Back to top](#)

[Contact Us](#)

© GBud Games 2021