



## Easy Chess Puzzle # 0059

By

G Bud Games  
<https://gbud.in>

October 31, 2021

## Contents

<b>Easy Chess puzzle # 0059 - Gain queen through a pin in two moves</b>	<b>3</b>
Easy chess puzzle 0059 . . . . .	3
Solution to easy chess puzzle 0059 . . . . .	4
Solution 1 . . . . .	4
Right moves for the solution to the easy chess puzzle 0059	6
Explanation for the moves . . . . .	6
Categories of easy chess puzzle 0059 . . . . .	7
How to view the solution to easy chess puzzle 0059 . . . . .	7
How to get help for moves in the easy chess puzzle 0059 . . . . .	7
Play chess for free . . . . .	9

## List of Figures

1	Solve this easy chess puzzle 0059. Gain queen through a pin in two moves @ <a href="https://gbud.in/g9znmm1">https://gbud.in/g9znmm1</a> . . . . .	3
2	Solve this chess puzzle online with solution @ <a href="https://gbud.in/g9znmm1">https://gbud.in/g9znmm1</a>	3
3	Initial board position of easy chess puzzle 0059 . . . . .	4
4	Re1 - This move forces the opponent's queen to stay in e file since it exposes the king to a check if it moves. Your rook have pinned the opponent's queen to their king . . . . .	5
5	Qxe1+ - Your opponent realised that they will lose their queen any way since it is pinned to their king. They may want to have a maximum damage to your pieces before they loses their queen. Hence they capture your rook. This is called desparado move . . . . .	5
6	Bxe1 - Your bishop captures the opponent's hanging queen. This is how you can capture the queen through a pin . . . . .	6
7	Click the solution button to view solutions @ <a href="https://gbud.in/g9znmm1">https://gbud.in/g9znmm1</a> . . . . .	7
8	Click the help button to get help on next move @ <a href="https://gbud.in/g9znmm1">https://gbud.in/g9znmm1</a> . . . . .	8
9	Solve more easy puzzles @ <a href="https://gbud.in/chsezpz">https://gbud.in/chsezpz</a> . . . . .	8
10	Solve other puzzles @ <a href="https://gbud.in/chsgppz">https://gbud.in/chsgppz</a> . . . . .	8
11	Play chess online for free. Solve puzzles and play with friends	9
12	Solve this puzzle online by scanning this QR code or go to the link below . . . . .	10

## Easy Chess puzzle # 0059 - Gain queen through a pin in two moves

Solve this easy chess puzzle and improve your chess games through improvement of your chess strategies and chess tactics.

Puzzle No : 0059

Difficulty level : Easy

Description : Gain queen through a pin in two moves

Next Move : White

Player level : Beginner

Short URL for puzzle : <https://gbud.in/g9znmm1>

### Easy chess puzzle 0059

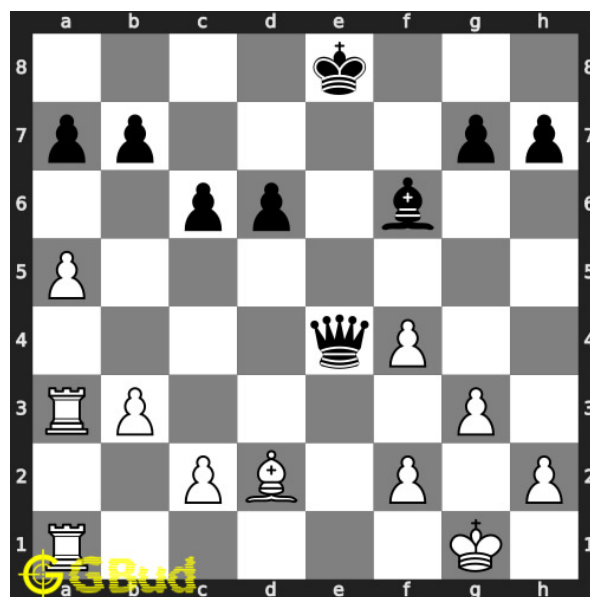


Figure 1: Solve this easy chess puzzle 0059. Gain queen through a pin in two moves @ <https://gbud.in/g9znmm1>



Figure 2: Solve this chess puzzle online with solution @ <https://gbud.in/g9znmm1>

## Solution to easy chess puzzle 0059

At this puzzle, next **move** is by **White**. The objective of the puzzle is to gain queen through a pin in two moves.

See the interactive solution at the [puzzle page](#)

### Solution 1

**Initial board position** This is the initial board position of easy chess puzzle 0059.

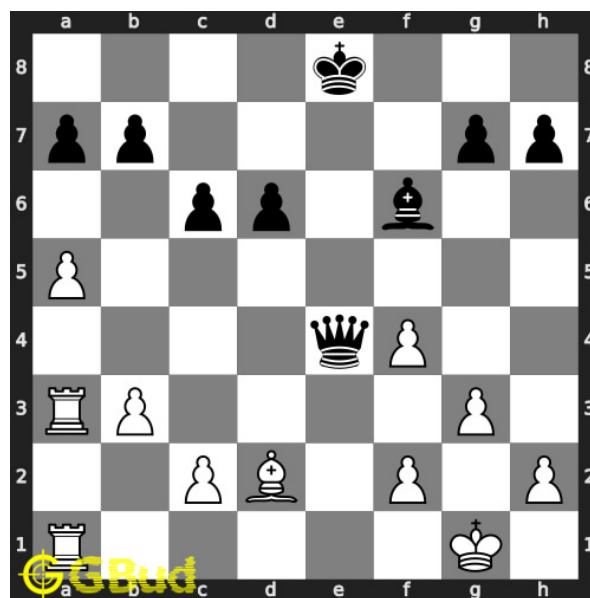


Figure 3: Initial board position of easy chess puzzle 0059

**Move 1** Move by white

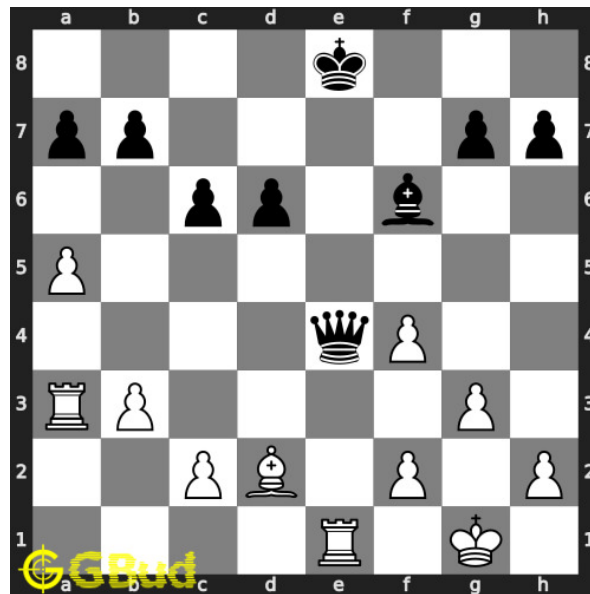


Figure 4: Re1 - This move forces the opponent's queen to stay in e file since it exposes the king to a check if it moves. Your rook have pinned the opponent's queen to their king

**Move 2** Move by black

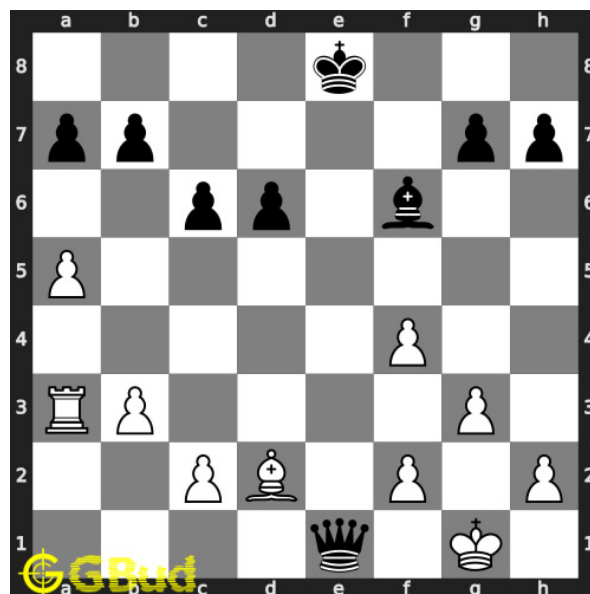


Figure 5: Qxe1+ - Your opponent realised that they will lose their queen any way since it is pinned to their king. They may want to have a maximum damage to your pieces before they loses their queen. Hence they capture your rook. This is called desperado move

**Move 3** Move by white

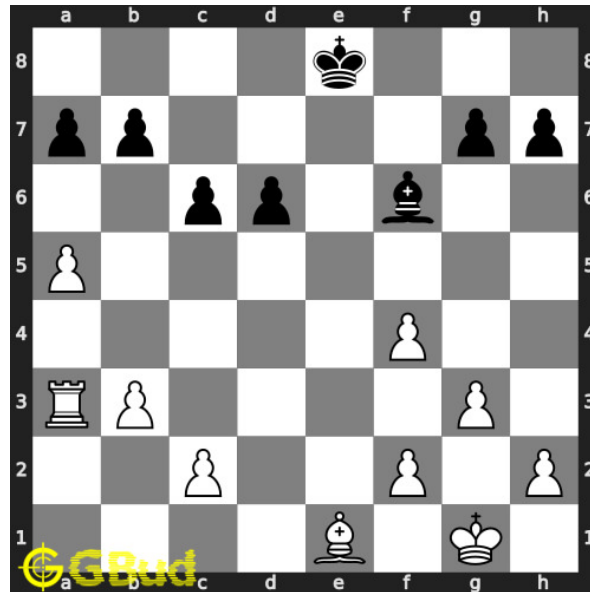


Figure 6: Bxe1 - Your bishop captures the opponent's hanging queen. This is how you can capture the queen through a pin

### Right moves for the solution to the easy chess puzzle 0059

Based on the objective of the puzzle, you have to make the right moves. Following are the right moves

1. Re1, Bxe1

### Explanation for the moves

1. Re1 - This move forces the opponent's queen to stay in e file since it exposes the king to a check if it moves. Your rook have pinned the opponent's queen to their king
2. Bxe1 - Your bishop captures the opponent's hanging queen. This is how you can capture the queen through a pin
3. Qxe1+ - Your opponent realised that they will lose their queen any way since it is pinned to their king. They may want to have a maximum damage to your pieces before they loses their queen. Hence they capture your rook. This is called desperado move
4. For right move - You have perfectly understood about pin. You have also gained a queen through this. Good job
5. For wrong move - You could have moved your rook and pinned the queen to the opponent's king. Try again

## Categories of easy chess puzzle 0059

This easy chess puzzle falls in these categories.

1. [Easy chess puzzles](#)
2. [Gain puzzles in chess](#)
3. [Strategy puzzles in chess](#)
4. [Terminology puzzles in chess](#)

## How to view the solution to easy chess puzzle 0059

To view the [solution to this puzzle](#), follow the steps given below

1. Go to the [puzzle page](#)
2. Click the solution button (Key as shown [below](#)) to view the solution



Figure 7: Click the solution button to view solutions @ <https://gbud.in/g9znmml>

## How to get help for moves in the easy chess puzzle 0059

To get help or the possible next moves in the puzzle, , follow the steps given below

1. Go to the [puzzle page](#)
2. Click the help button (exclamation mark as shown [below](#)) to get help or suggestion on next possible [move](#)



Figure 8: Click the help button to get help on next move @ <https://gbud.in/g9znmm1>



Figure 9: [Solve more easy puzzles @ https://gbud.in/chsezpz](https://gbud.in/chsezpz)



Figure 10: [Solve other puzzles @ https://gbud.in/chsgppz](https://gbud.in/chsgppz)



## Play chess for free

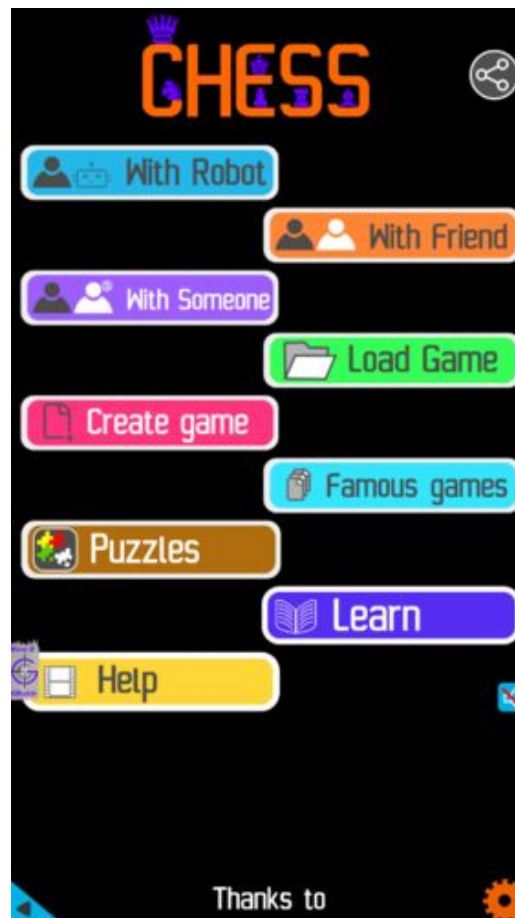


Figure 11: Play chess online for free. Solve puzzles and play with friends

Play chess for free at <https://gbud.in/chs>

We present you a platform to play chess online with friends for free. No need to install any app. You can play chess for free without registration or login.

Simple. You can do several chess related activities.

1. [solve chess puzzles](#)
2. [learn about chess](#)
3. [play chess with computer](#)
4. [play chess with friend](#)
5. [create your own chess games](#)
6. [fen viewer](#)
7. [fen editor](#)
8. [fen generator](#)
9. [pgn viewer](#)
10. [chess board editor](#)

11. [view famous chess games.](#)



Figure 12: Solve this puzzle online by scanning this QR code or go to the link below

<https://gbud.in/g9znmm1>

Read the latest article on Easy Chess puzzle # 0059 - Gain queen through a pin in two moves by scanning this QR code or click the link

Previous article : [« Easy Chess puzzle # 0058 - Gain bishop](#)

Next article : [Easy chess puzzles »](#)

[Back to top](#)

[Contact Us](#)

© GBud Games 2021